

#10 banknote of Canal Bank, New Orleans, with portraits of Franklin & Washington like Scott design types A5 & A10, S. (by some printer)



1893, Columbian Exposition Admission Tickets, the set of six engraved tickets by the American Bank Note Co.; the Indian, Columbus, Washington & Lincoln tickets all have the scarce "A" Series number (the Franklin only comes with the "A", the Handel only without it), Very Fine. Estimate \$250 - 350
 500,000 each of the Indian, Columbus, Washington & Lincoln tickets were printed with the "A", one million without it. 245,000 of the Franklin were printed and only 100,000 of the Handel.

1893 Col-umbian Expro. 4 diff. tickets, S.

10



10A
(3 copies)



11
(not
11A)
(2 copies)



11A
Pos. 51 R2L



11A
Pos. 30 L2L



11A
Pos. 5 R2L



11A
Pos. 15 R2L



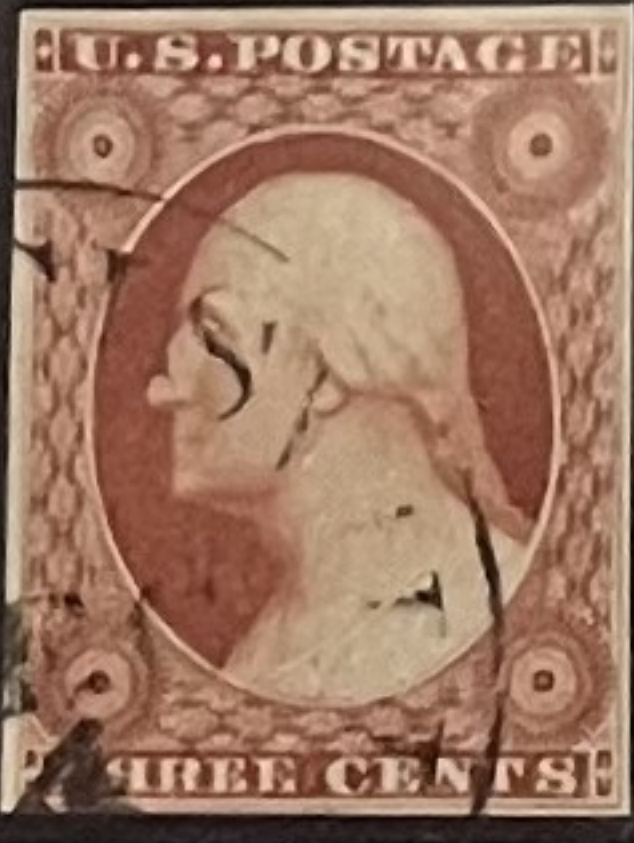
11A
Pos. 16 R2L



11A
Pos. 32 R2L



11A
Pos. 35 R2L



11A
Pos. 37 R2L



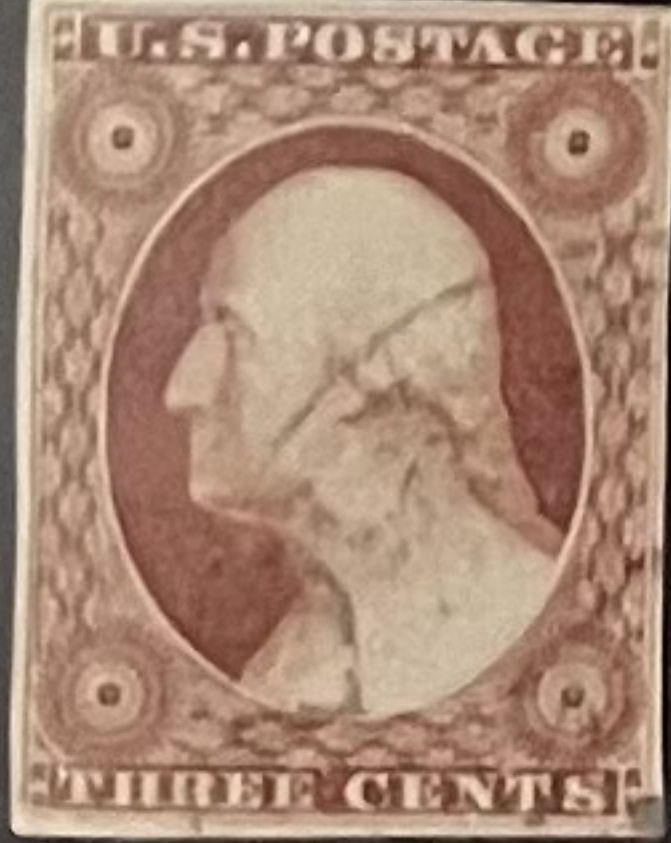
11A
Pos. 42 R2L



11A
Pos. 46 R2L



11A
Pos. 56 R2L



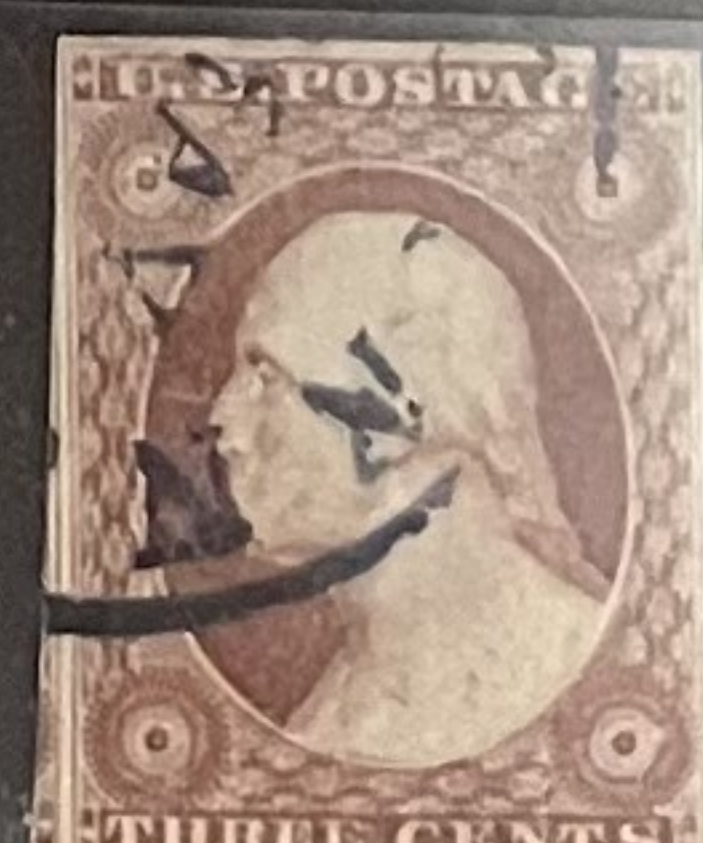
11A
Pos. 74 R2L



11A
Pos. 76 R2L



11A
Pos. 77 R2L



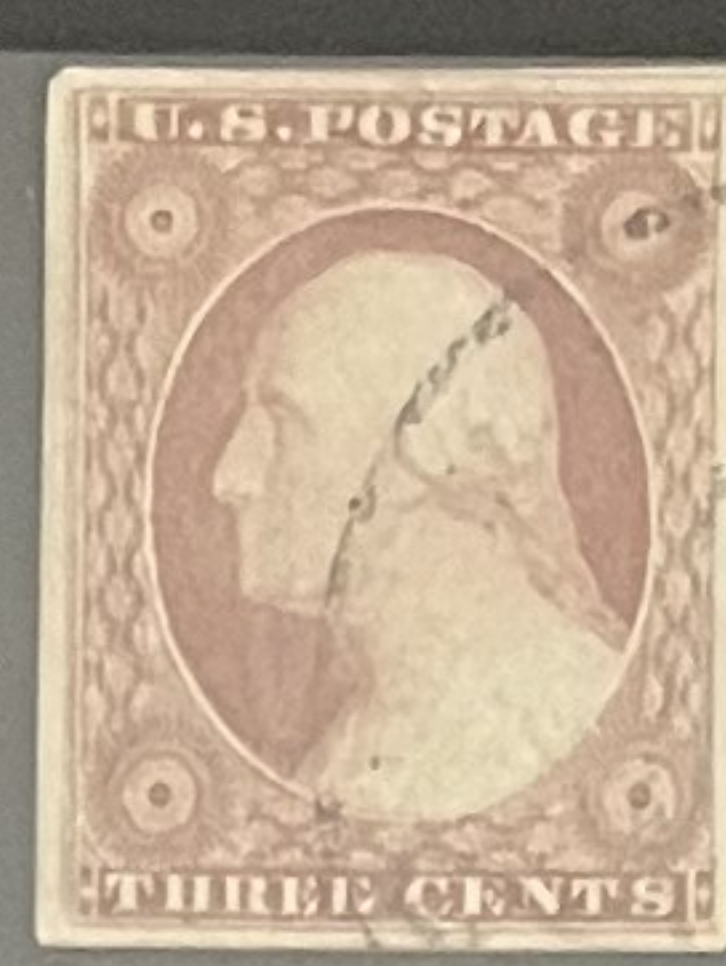
11A
Pos. 81R2L



11A
Pos. 85R2



11A
Pos. 89L3
Two extra lines at L.
Only one line at R.



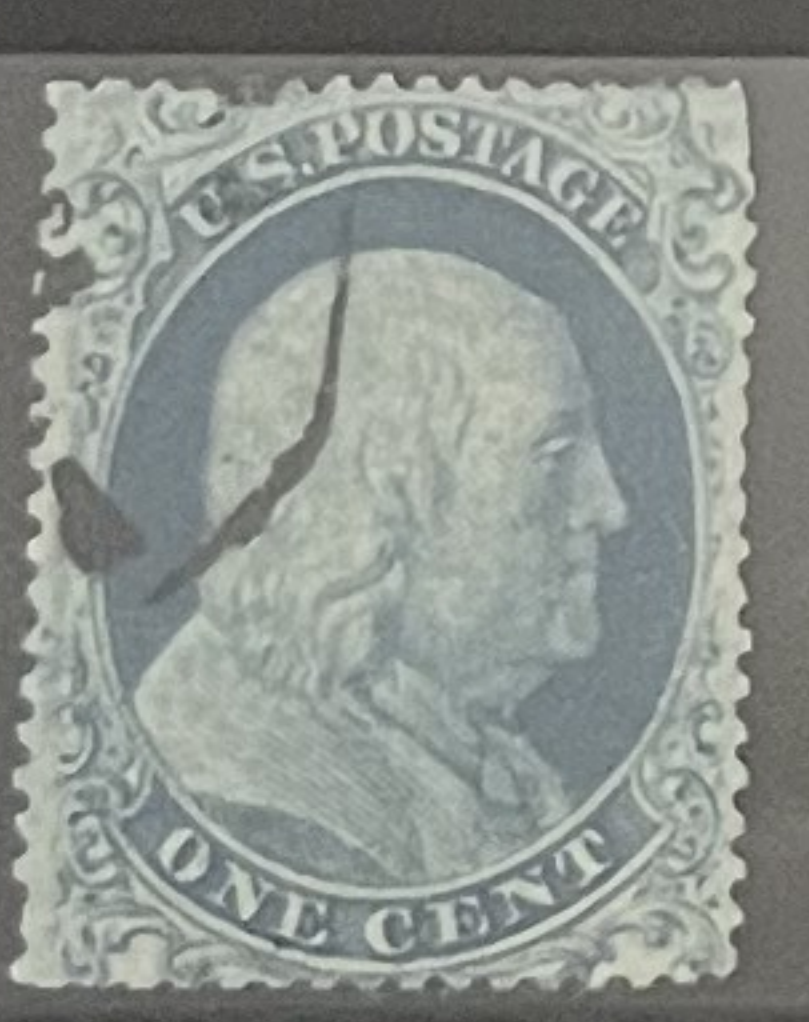
11A
Pos. 19R3
2 tiny thins per L.



11A
(6 singles
&
1 pair)



18
Plate 12, Pos. 67R12



20
Pos. 18L2



20
Plate 12, Pos. 7L12
1 perf. fault



20



22
Plate 11, Relief A
Broken at Top



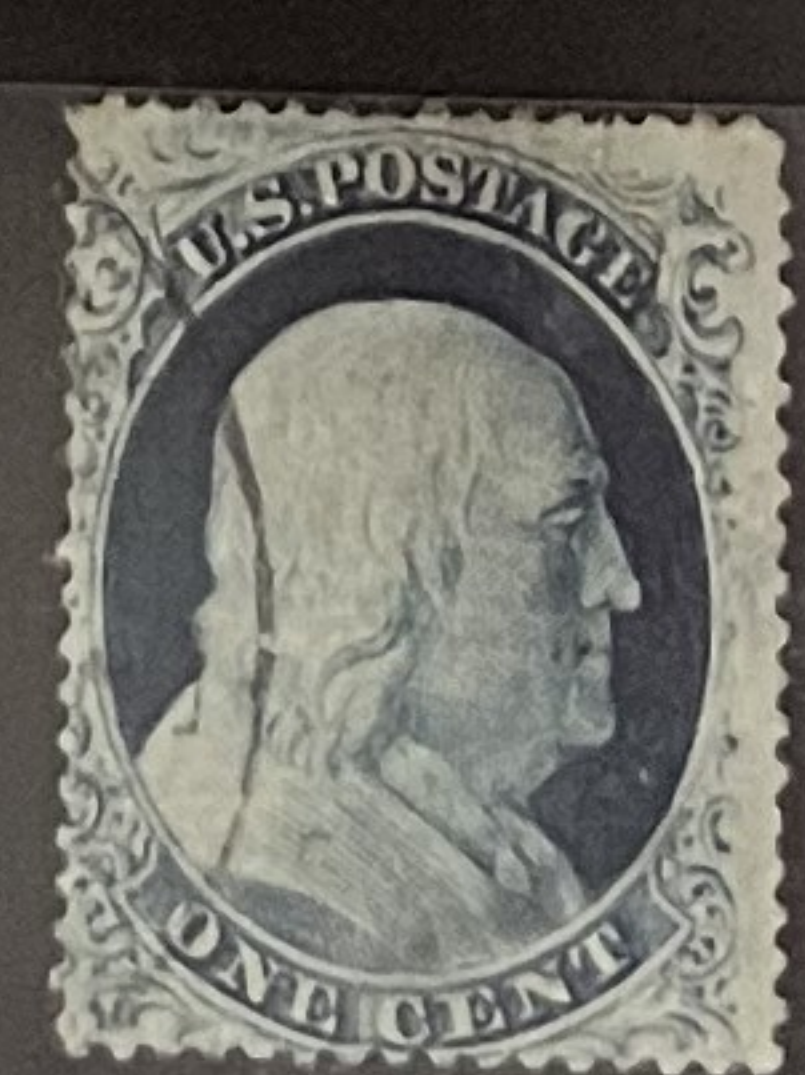
22
Plate 11, Relief B
Broken at Top



22
Relief D
72L4?



23
Recut once at Top & Bottom
Small thin



24
Pos. 60L7



24
Pos. 4888
(4888)



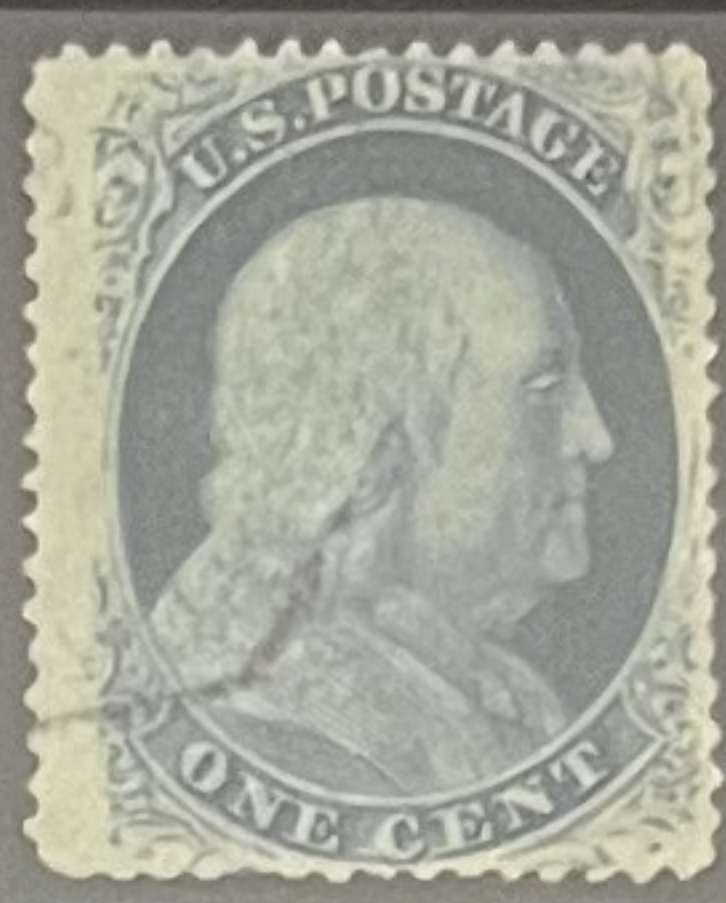
24
Pos. 8885



24
UNUSED, NG
IMPRINT AT LEFT
Pos. 4117



24
Horizontal Dash in Hair
Pos. 2417
well centered
Magenta octagon ds.



24
Plate 6, 7, 8, 9, or 10;
Curl in head & Burr on neck
Not in Neinken(?)



24
3 Strikes of
"PAID"



24
strip of 3
Pos. 55
65
75
R9



24
Vertical Strip 3
Pos. 2
12
22
R8
Early Impression
Faults, incl. cut



25
Hartford
11/7/1857
Paperf.
all 4
sides?



25
3 pinholes



26
Plum
Thin



26
Wabash,
Ill.
1/30
(soaked
off cover
by me)



26
(4
cds. no)



No. 38 505

JUN 5 - 1972 19

THE PHILATELIC FOUNDATION
99 PARK AVENUE
NEW YORK, N. Y. 10016

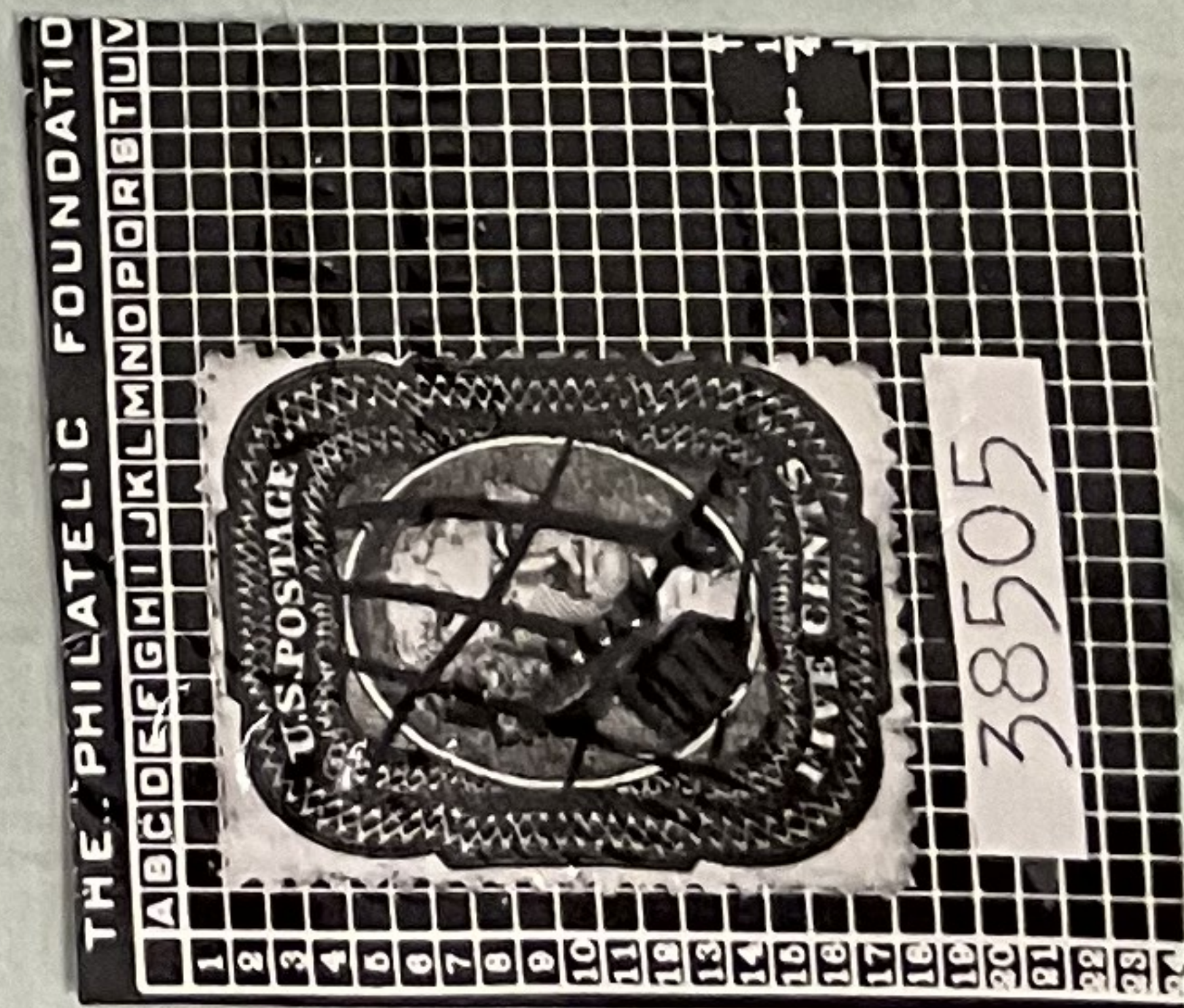
EXPERT COMMITTEE

We have examined the enclosed USA

1858, 5c, pen cancel

submitted by Geoffrey Brewster

of which a photograph is attached and are of the opinion
that it is genuine Scott 28, red brown, toned and
with a tiny corner crease



For The Expert Committee
Acting Chairman

26
(3)



26A

Well centered
"7/23/1857" Iowa dc.
(Red weak of use)



26A



28

Black
cels. #
Red color
at B.



28

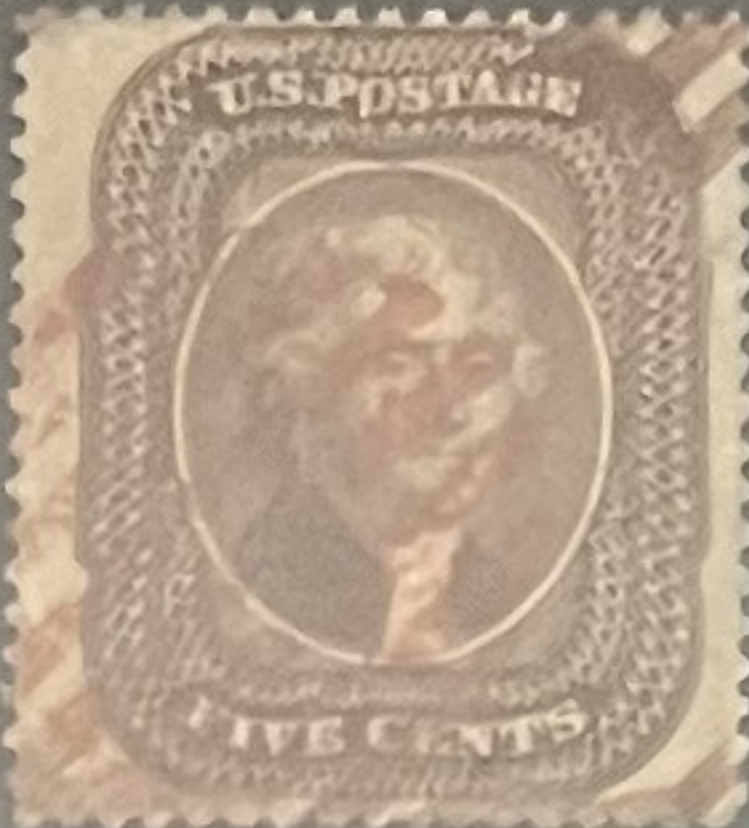
almost
Indian
Red color
P.F.C.
#38505



29
New Orleans
12/7/60



30A
(3)



32



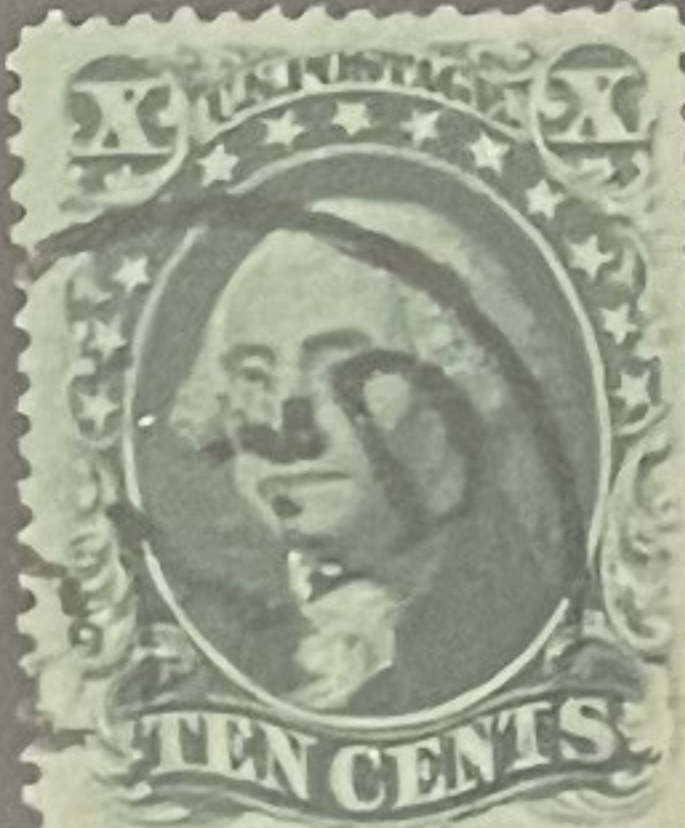
32
Tear
at T.



33
(2)



35



35
Small thin
Lh cor.
Cor. crease
LB



35
Perf.
faults



36
(4)



36b var.
Double Frame Line L
(4th Vertical Row L3);
Lightly cancelled
FANTASTIC CENTERING



36b var.
Double Frame Line at Left
(4th Vertical Row L3);
Blue grid (Very scarce on
this stamp);
FANTASTIC CENTERING
Thin SPOTS



36b's seems plate 3,
Perforations possibly
Trimmed off to fake
the imperf. #17;
Magenta ms. cancel,
maybe a presentation
specimen; NG
Faint corner crease UR



37
*, NG
Gray lilac?
Shallow thin



37a
Gray
Tiny thin
Reperf.?



38
UNUSED, NG
Off-center
Shallow thin spots



38
Philadel-
phia
1860
red cds.



38
Perf.
faults



38 var.
Double Transfer TL
said L.G. Brookman.
Almost portrait-free
Red cds. cancel;
Trivial corner wrinkle LL



63
*, NG



63
(2, incl.
blue cork)



63b
Dark Blue



65
(5, incl.
bold blue
cork, blue
CDS, & cds)
TWA & MA



67
(2, incl.
blue cds.)



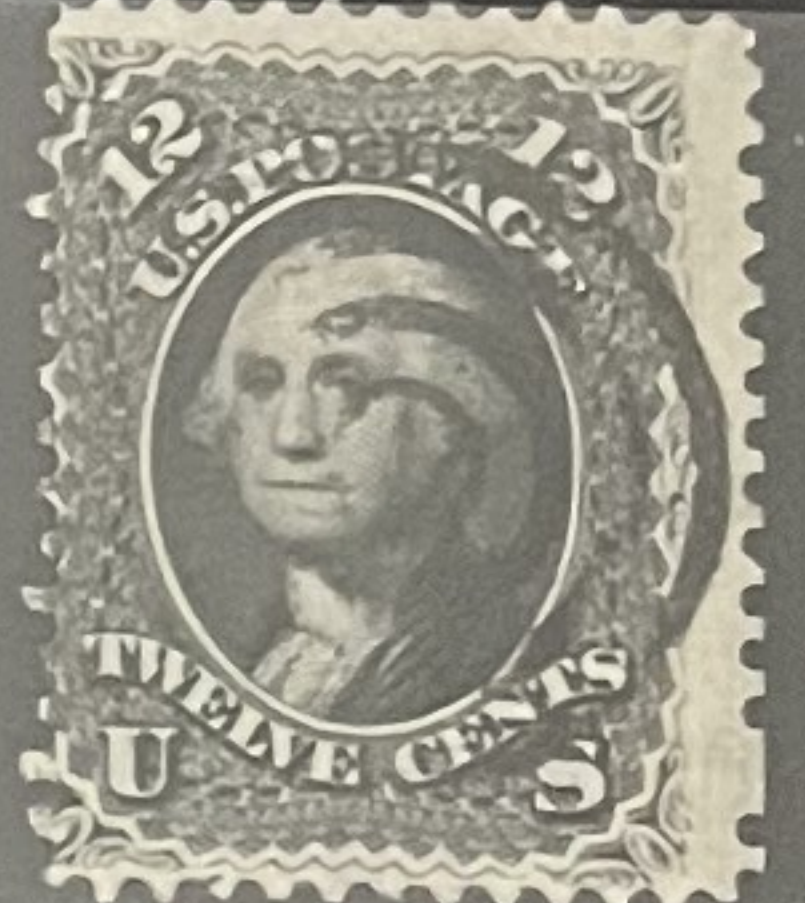
68
(4 copies)



69
★, NG



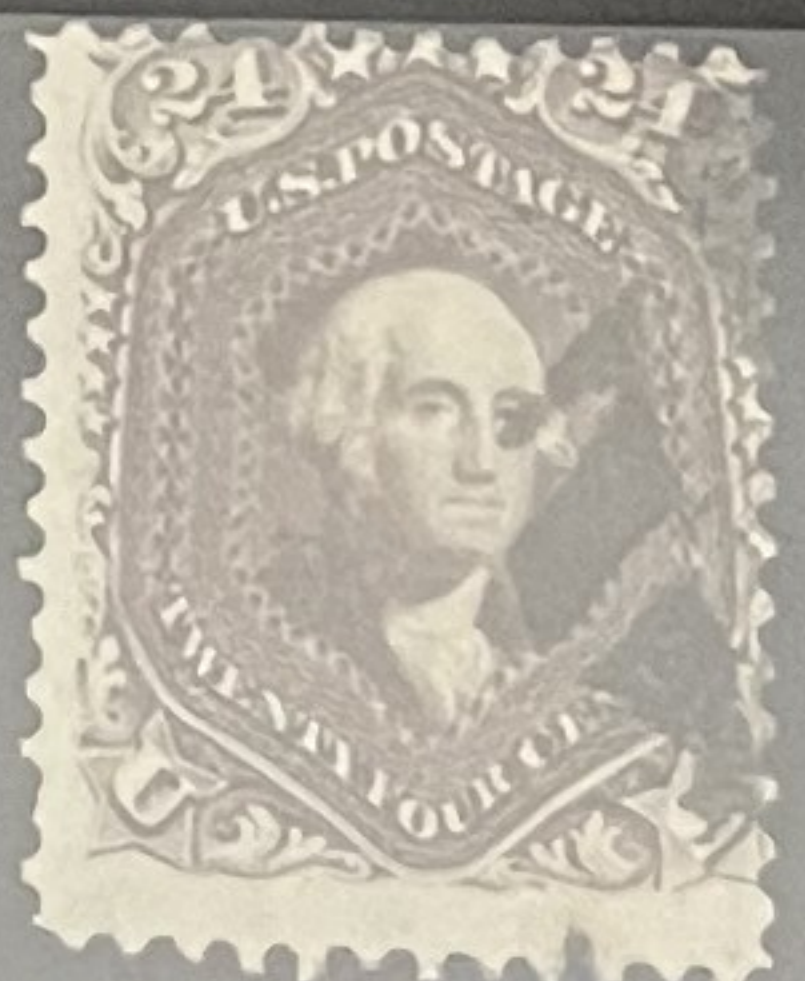
69
(4, incl.
S.F. Cog &
purple
gold)



700
Tiny perf.
fault LL
corner
(Pale color
var., grayish
but not 70d)



70a
(4 copies)



71
Negative
Star of
David



71
(6
copies)



72
★, NG



72
Wrinkle



72 Var.
Horizontal
& Vertical
Crossed
lines
(off-center
guide line?)
See esp.
4R cov.



73
(6 copies,
incl. 2
blue grids,
1 circle of
diamonds,
1 reverse (?)
cancel)



73
Purple
(Magenta?)
cda.



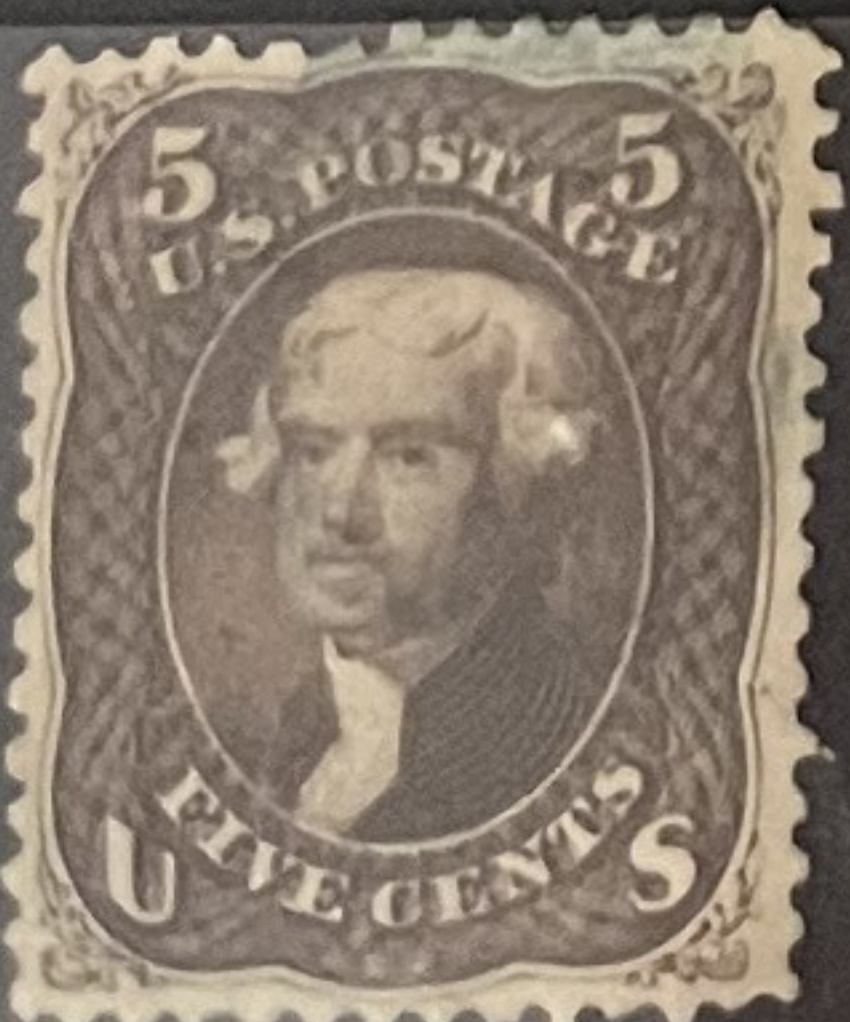
73
Milwaukee
Segmented
Target



75
(3)
1 w/teach
& red cds.



76
(4 copies;
Blue cancel
one has a
scuff spot)



76
Star in
circle of
dots



76
S.F. Grid-
in-circle



76
Grid of
squares



77
(4 Copies)



78



78 Var?
Left Panel,
Vert. Row 10,
Vert. guide
line R. (crease)
Imperf. L.?



78 a
(2 copies)



78 b
Gray
(2 copies)



79-E15
(?)
NG, Pen



Schuyler:
Perhaps best
to get PFCs
on all grills
that cat.
high in Scott.

84 ⓪
D grill:
Clearly counts
15 points across

Needs
PFC



85



85 B
(4 Copies:
Red fancy,
light target,
D.C. Oval,
Cork)



85 E
(2 Copies:
Circle of
Wedges,
Black +
Red UL&T.)



86
(2
copies)



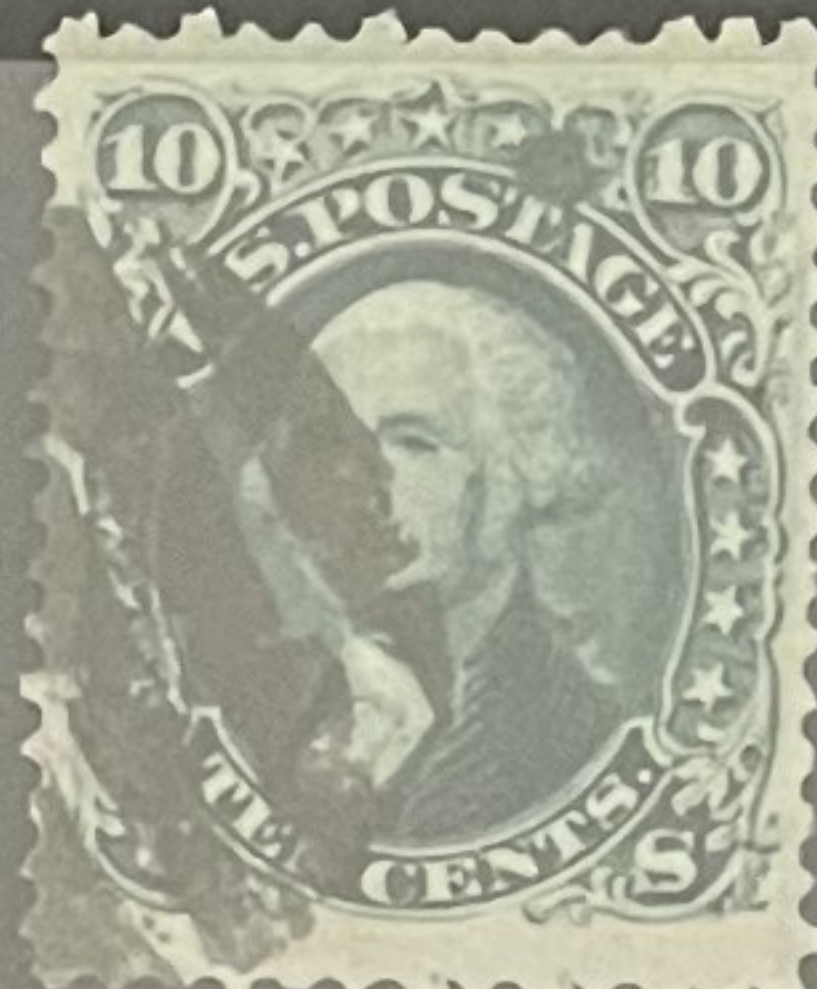
87
(3 copies)



88
(3 copies:
Blue Star,
"10", &
Duplex)



89 Var.
Plate 4 Ptz.
Dbl. Tpr. &
Blot over "T"
of "POSTAGE"
(Siegel Sale
366, lot 899
[no photo])



89



90



91
(2
copies)



92
(2
copies)



93
★, NG



93
(2
copies)



94
★, NG



94
(3 copies:
2 Masonic,
1 S.E. jumbo)



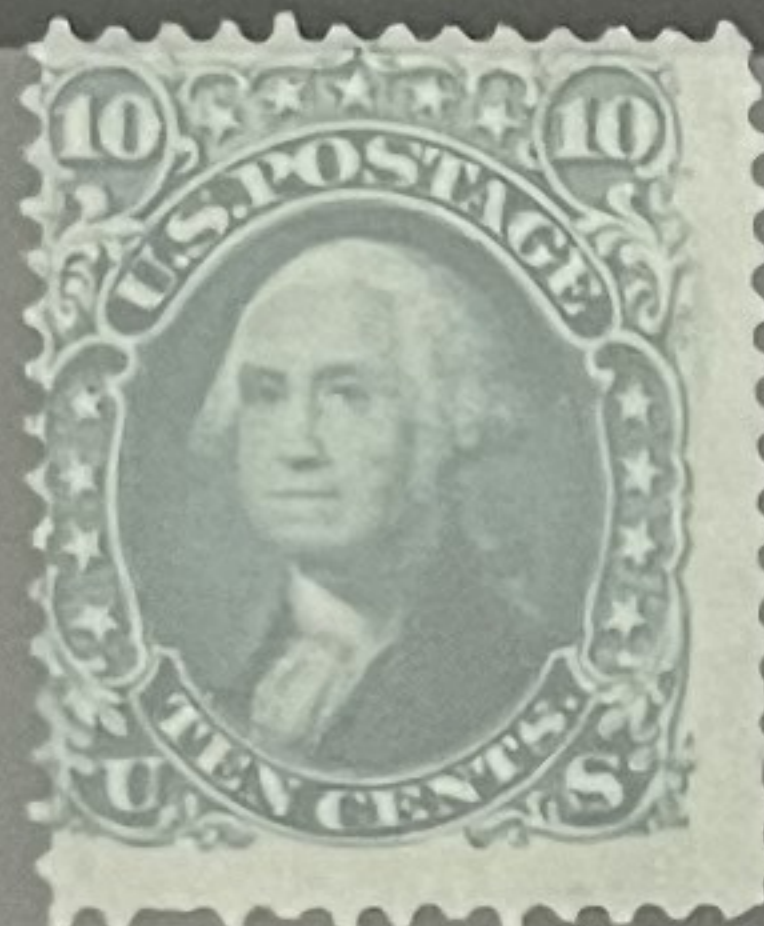
95
★, NG



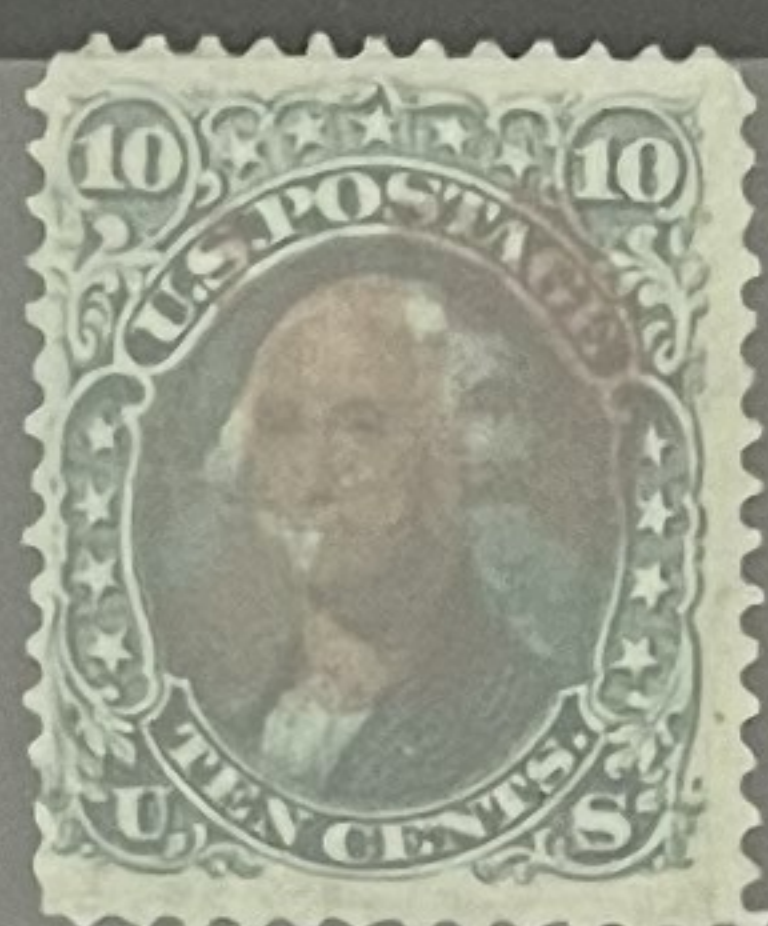
95



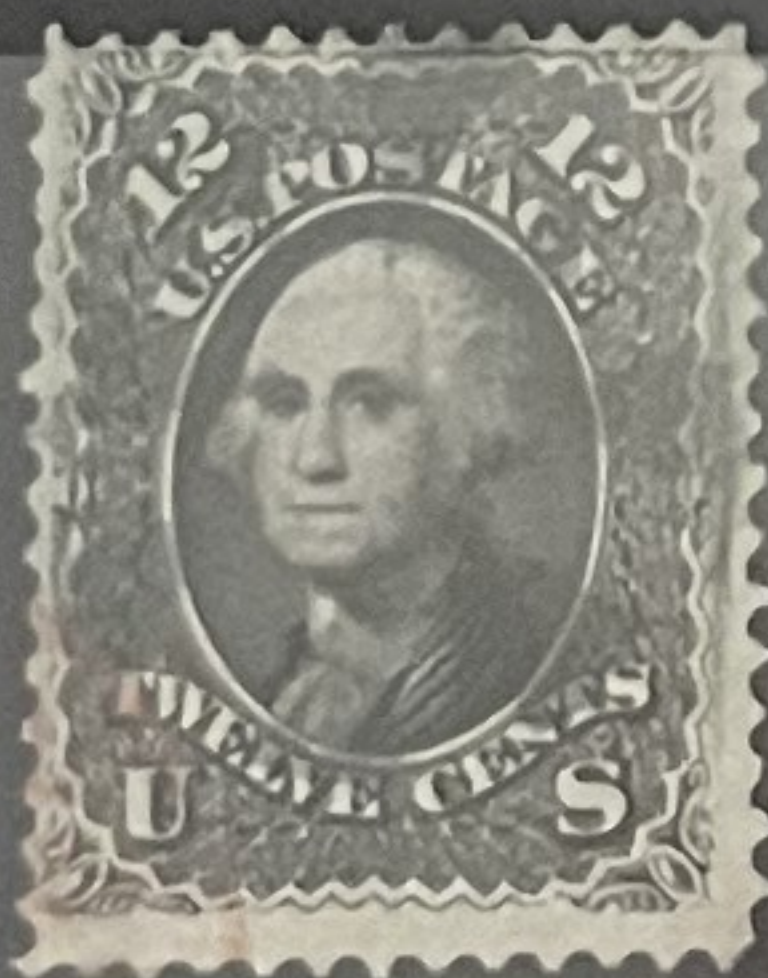
96
★, NG



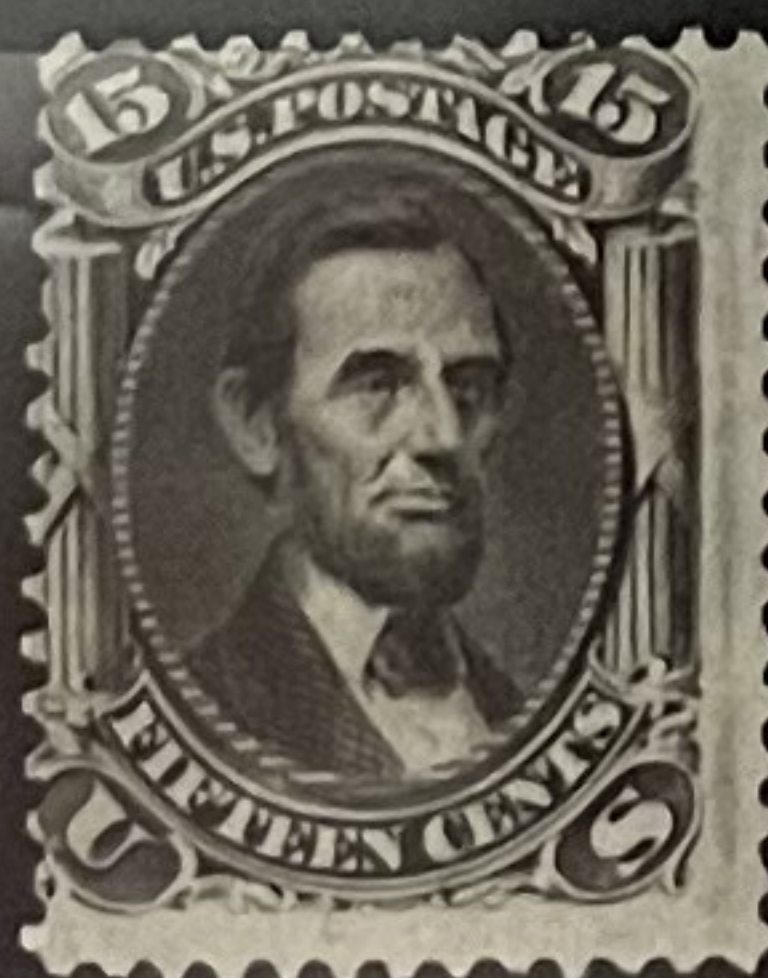
96
(3 copies,
incl. Red
Liberty Bell?
&
Red cds.
N.Y.
"PAID ALL/
TRANSIT")



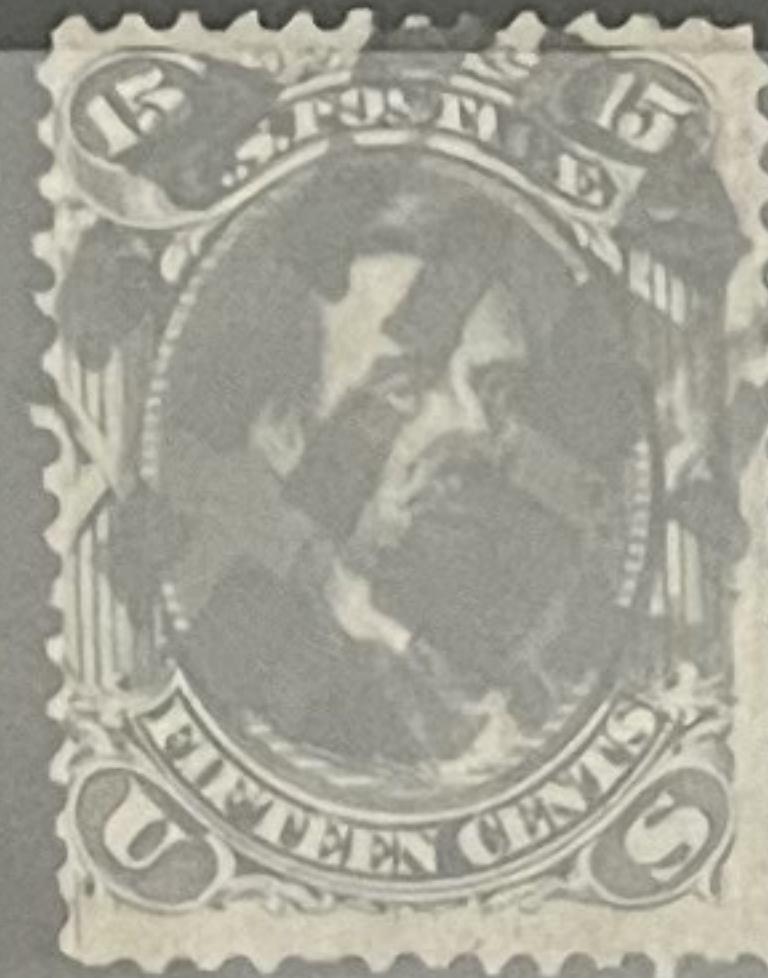
97
lt. cork
+
red cds.
LL



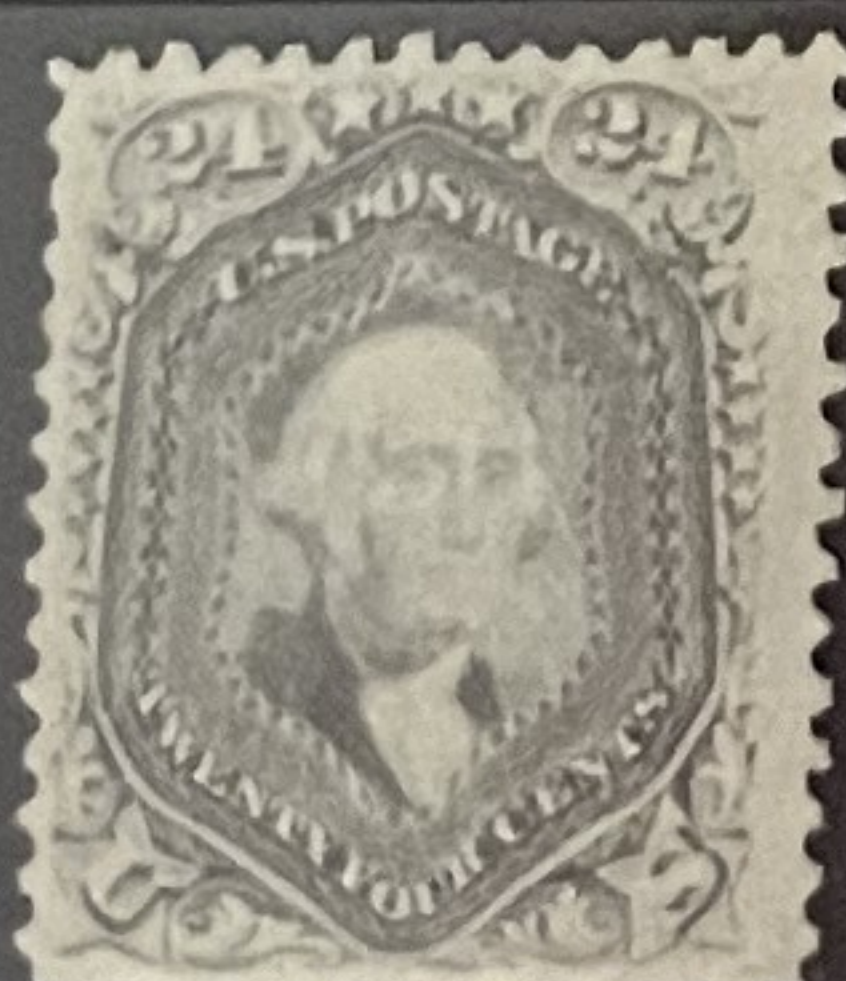
98
★, NG



98
(2 copies,
incl. circular
grail (of
Hawaii?))



99
★ NG



99



100
★ NG



100



112
★, NG



112
(2 copies,
incl. cds.
"CARRIER")
Signal Sale
374, 471042



113
★, NG



113
(3
copies)



114
★, NG
Thin



114
(4 copies,
incl. Red
Grid)



114
"Ironed
out grill":
P.F. Cent.
#38433



115
★, NG



115
Thin



115 Var.
Split
Grill,
Blue cancel



116
★, NG



116
3 copies:
1 cds. with
short perf. ht
& 2 with
cork



117 Var.
★, NG
Split
Grill;
S.E. (?) R.



117
(20
copies)



No. 38 433

JUN 5 - 1972

19

THE PHILATELIC FOUNDATION
99 PARK AVENUE
NEW YORK, N. Y. 10016

EXPERT COMMITTEE

We have examined the enclosed USA

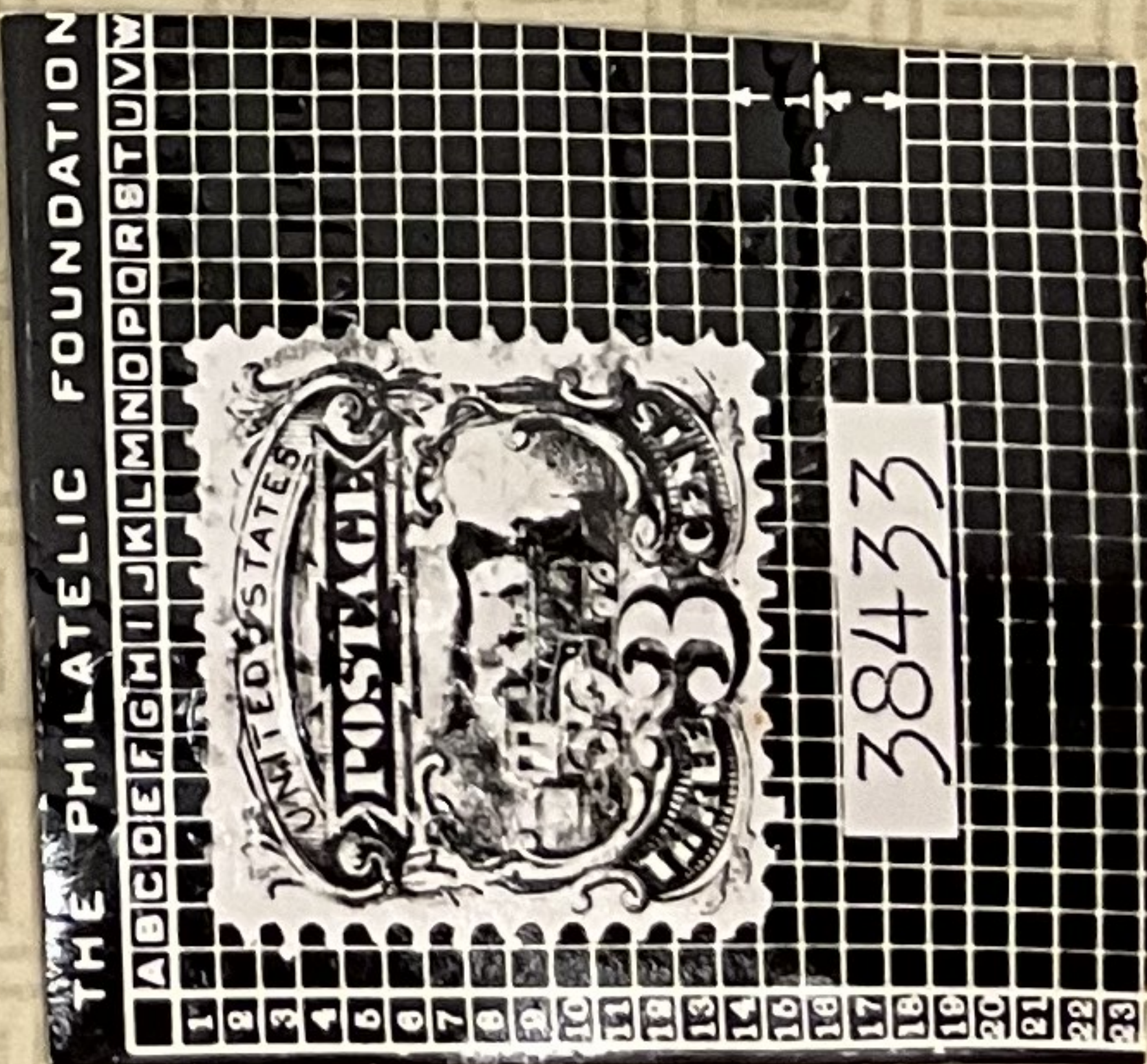
1869, 3c, blue, cancelled

submitted by Geoffrey Brewster

of which a photograph is attached and are of the opinion

that it is genuine Scott 114, with ironed out

grill



For The Expert Committee
Acting Chairman

118
(2
copies)



119
★, NG



119
(2
copies)



120
(4
copies)



121
2 creases



No. 01311494

4/4/2016



Professional Stamp Experts

P.O. Box 6170, Newport Beach, CA 92658
gradingmatters.com

Expert Committee

We have examined the enclosed item submitted to PSE, of which an image is shown below, and are of the opinion that:

Cat No.	Issue	Denom.	Color
Scott 135A USA	1870	2c	red brown

“it is genuine used, REPERFORATED at the right.”



Stephy

For The Expert Committee

THIS CERTIFICATE IS PRINTED ON WATERMARKED PAPER AND IS NOT VALID WITHOUT WATERMARK

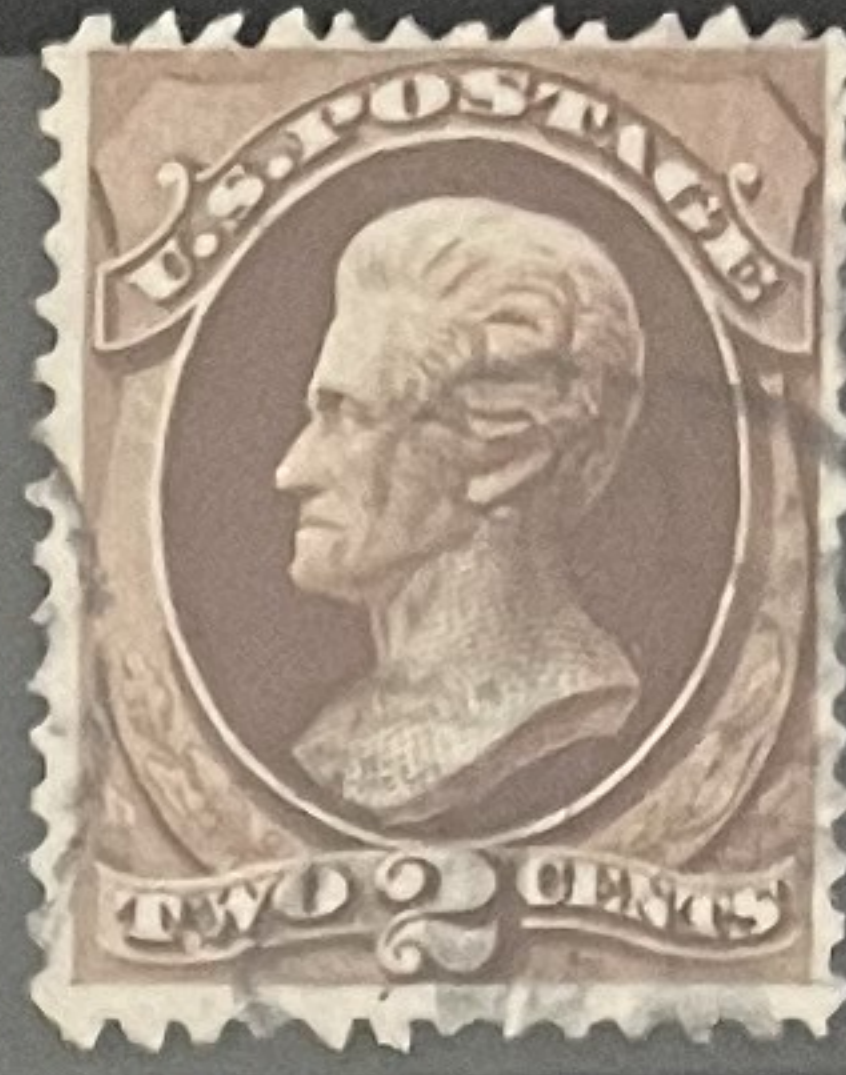
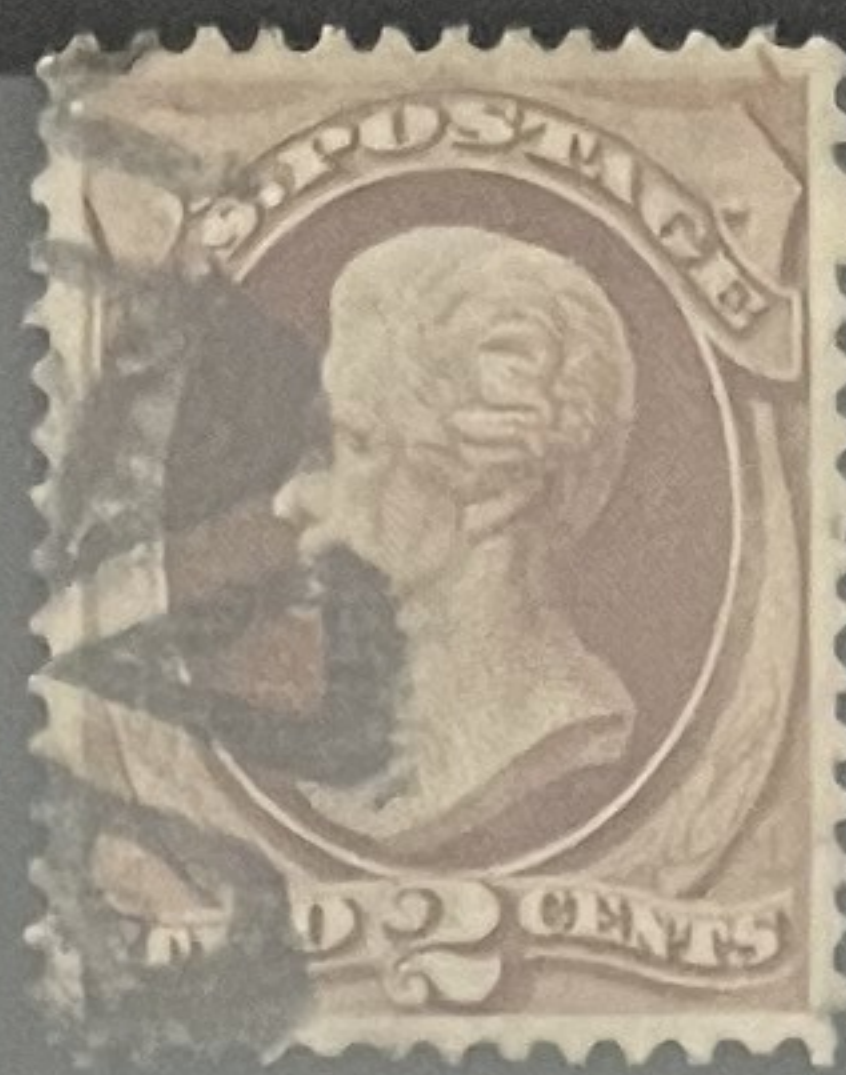
134
Split Grill
UL&UR?
2 bends.



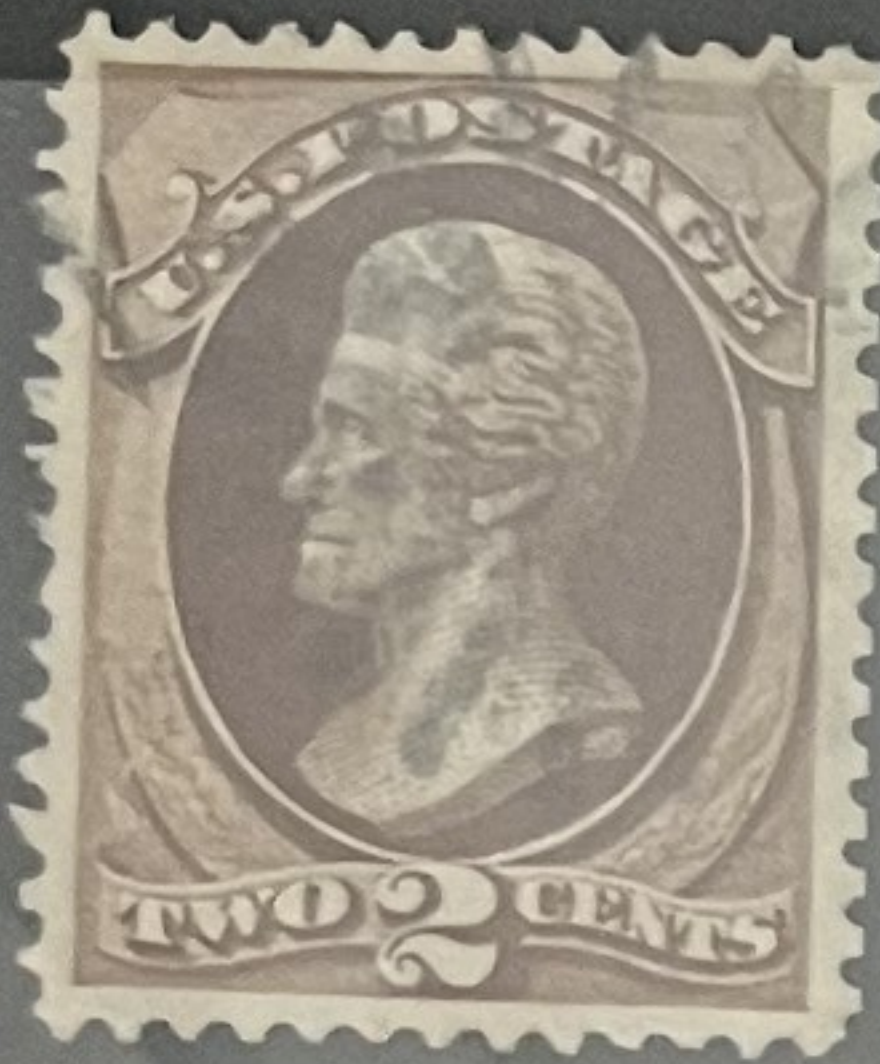
134
I grill



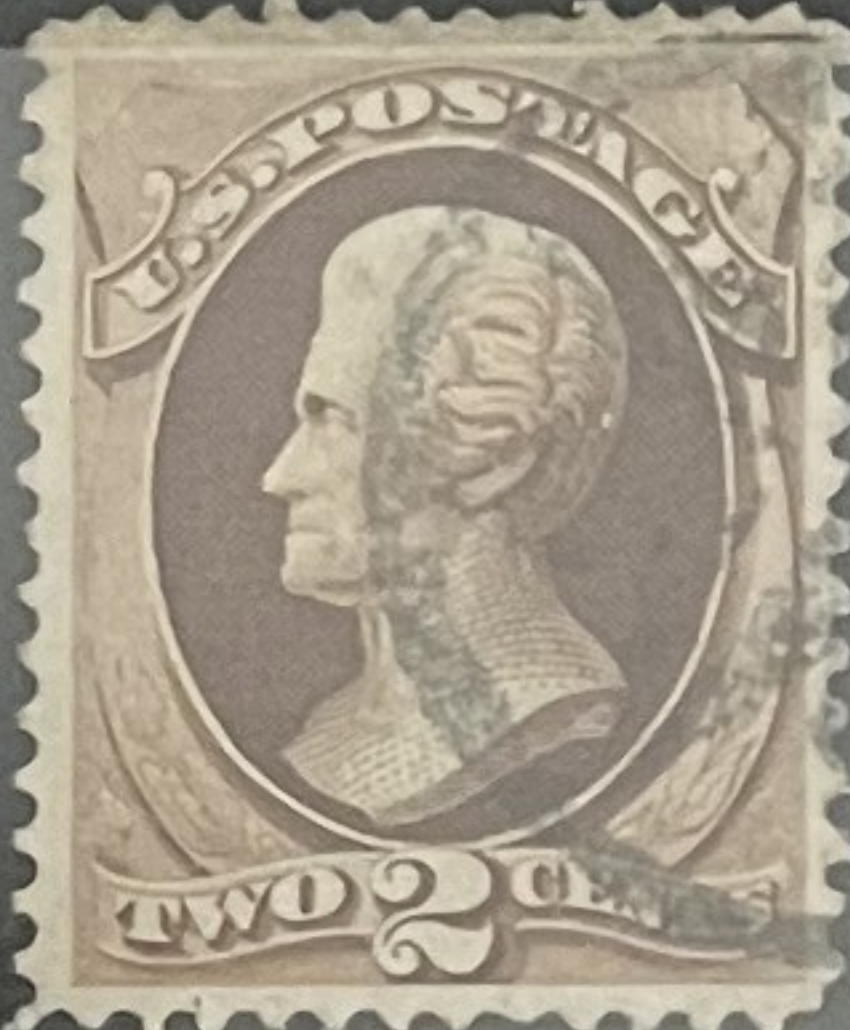
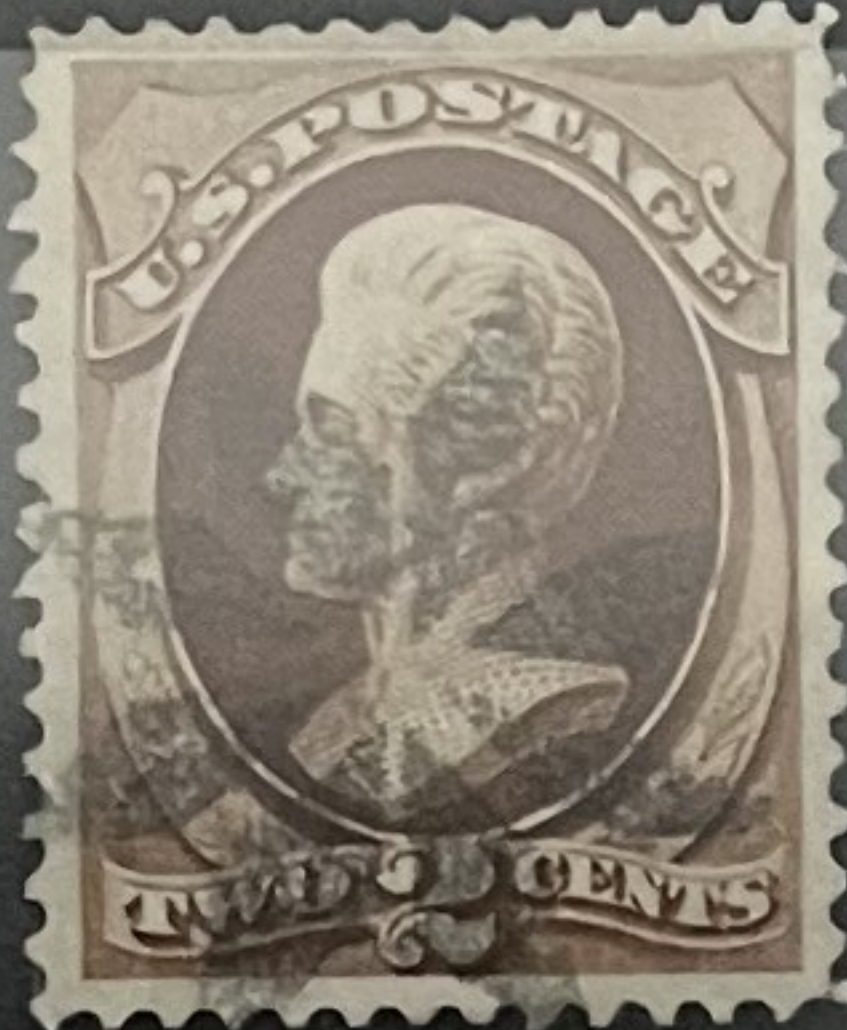
135
H. grill
(3 copies,
3 shades,
1 w/thin)



135A
I grill
Reperf. at R.
PSE Cent.
01311494



135
I grill
(2 copies,
incl.
18-Dia-
monds cork
& 1 N.Y.E.M.)



136
★ OG
disturbed



137
H grill
(2 copies,
N.Y. F.M.,
& C.D.S.)



137
I grill
2 copies
Blue cork
From Siegel
Sale 367
or 368
(first copy)



138
H grill
(2 copies,
"jumbo",
1 hairy
blue star
[negative])



138
H grill
Double
grill?



138
I grill
(2 copies)
Dark color
is Siegel
Sale 367
or 368



139
H grill
N.Y. Steam-
ship cds.
Fake grill



139
H grill
(2 copies:
1 duplex;
1 cork but
FAKE grill?
CDS FAKE



142
Signed
"L.G. Bookman"
& bought from
him in June
1969.
P.F. Cert. #53197
says FAKE grill.
If you can't get
opinion reversed,
sell AS IS or
return to me.



145
★, NG



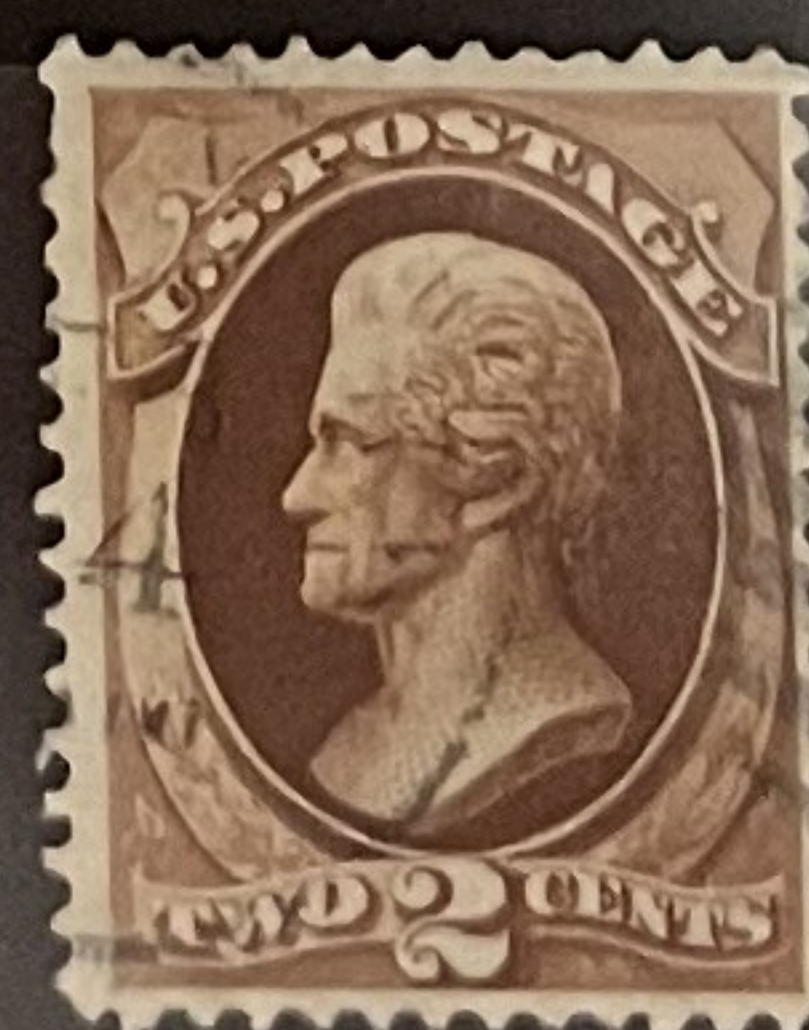
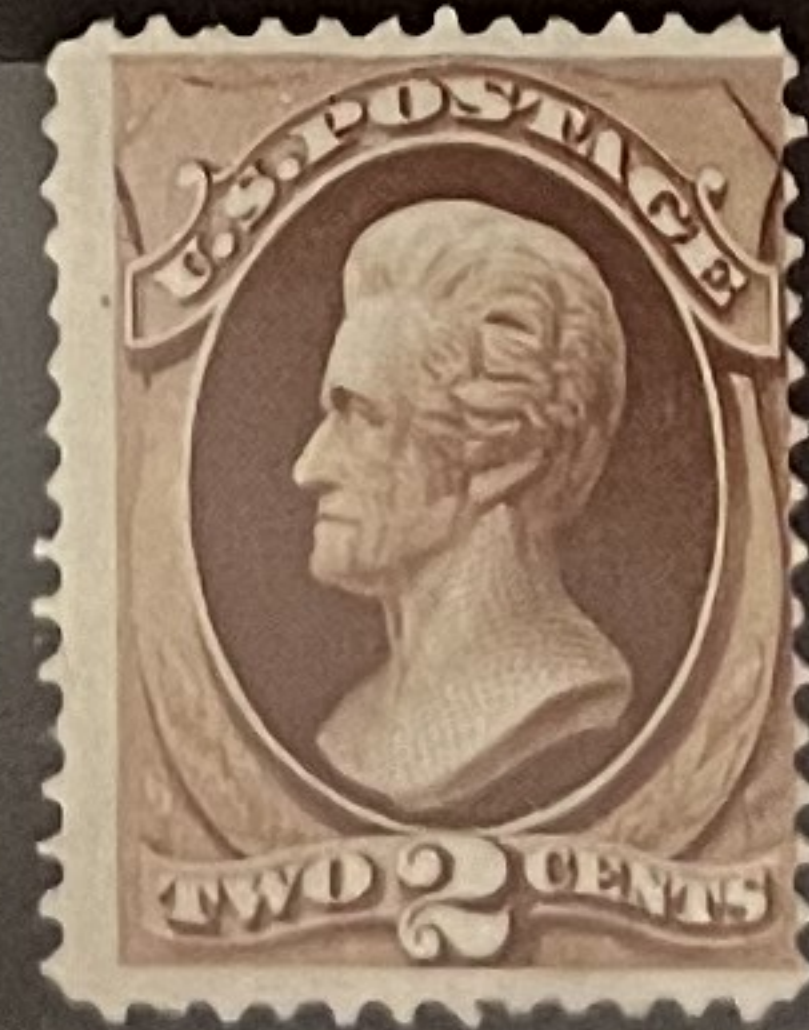
145



145 Var.
Dbl. thr?
(In & around
"ONE CENT")
Kiss Print



146
(2 copies:
1★, NG;
1 CDS.



147
Blue
target



MAR 22 1976

No. 53 197.....19.....

THE PHILATELIC FOUNDATION
99 PARK AVENUE
NEW YORK, N. Y. 10016

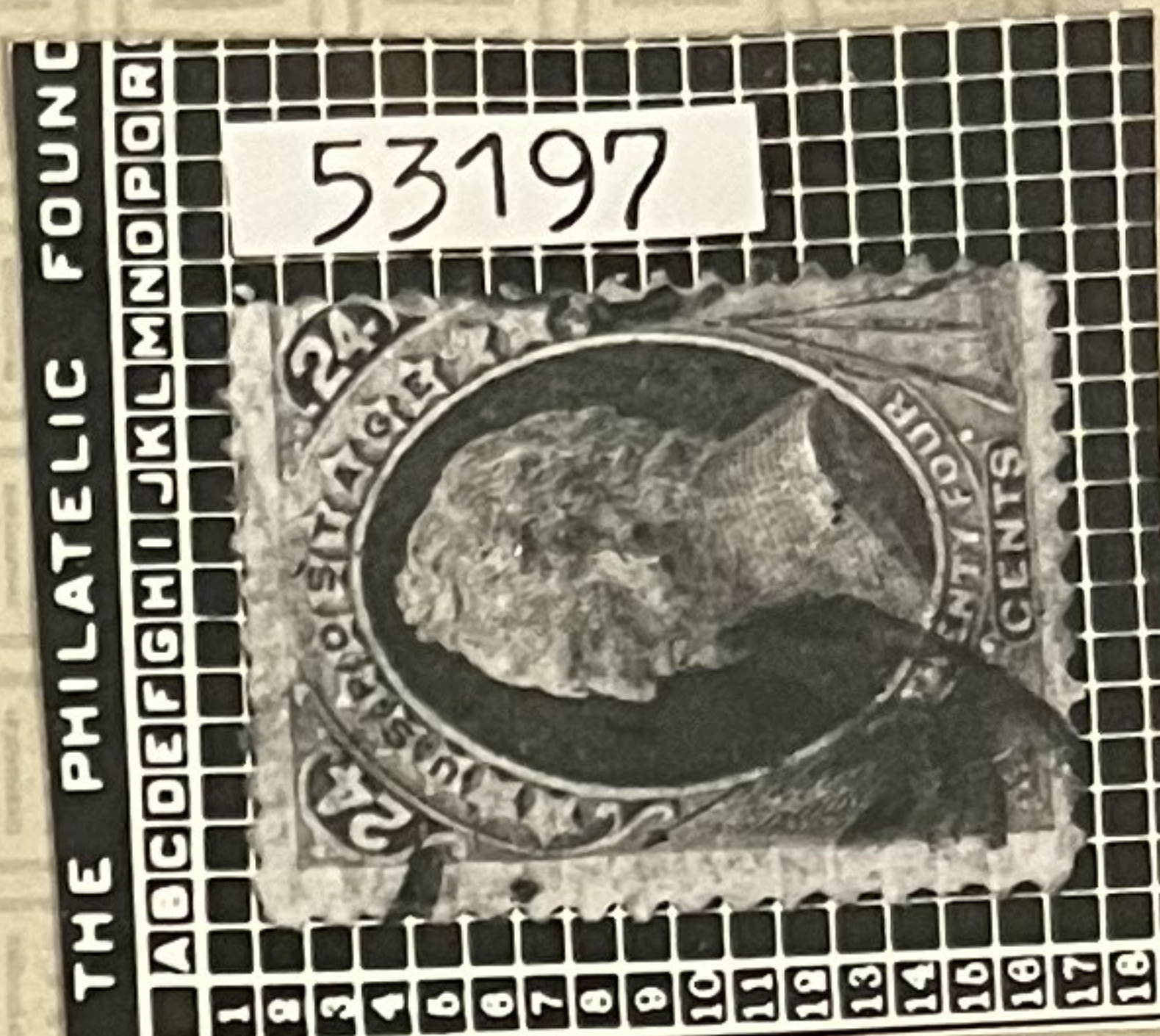
EXPERT COMMITTEE

We have examined the enclosed USA.....

1870, 24¢, purple, cancelled. -----

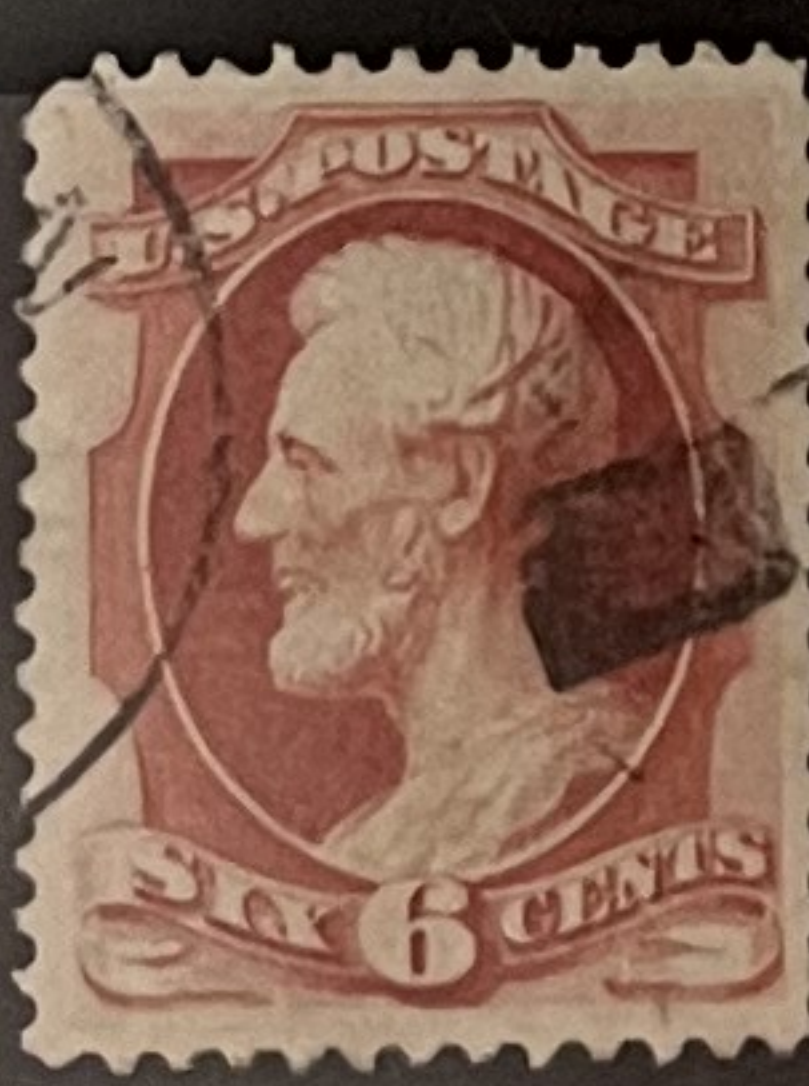
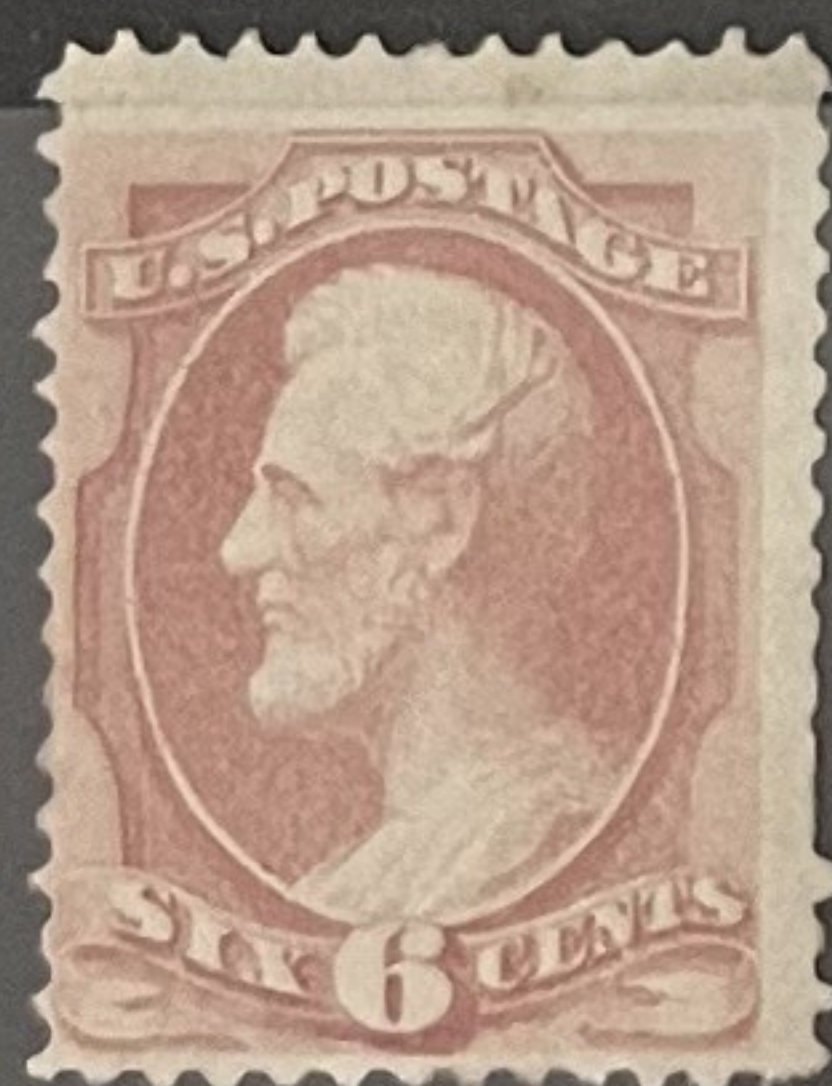
submitted by Geoffrey Brewster, -----

of which a photograph is attached and are of the opinion
that it is a genuine Scott 153 with a counter-
feit grill. -----



Howard Zieve
For The Expert Committee
Chairman

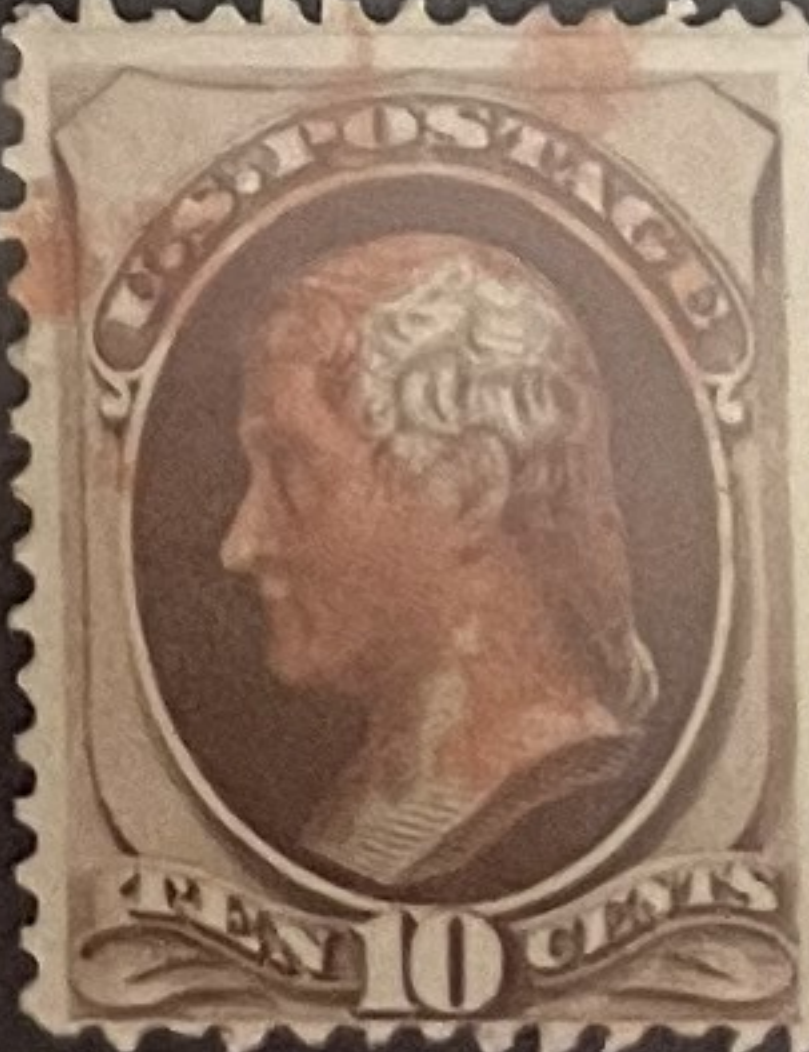
148
(7 copies:
1*, NG;
1 Grid;
1 Duplex;
1 cds. N.Y.;
1 cds. Tapa;
1 cds. College;
1 cork.)



149
(3 copies:
1*, NG, S.F.;
1 Red Toped
"FRANCO";
1 Target &
red cds. LL



150
(3 copies:
1*, NG;
1 Red cork;
1 Blue crayon)



151
 (2 copies:
 1*, NG,
 cut perf. L.;
 1 Blue cork)



152
 (3 copies:
 1*, NG;
 1 cork;
 1 Pen.)



152
 Target;
 Repaired
 tear U.L.



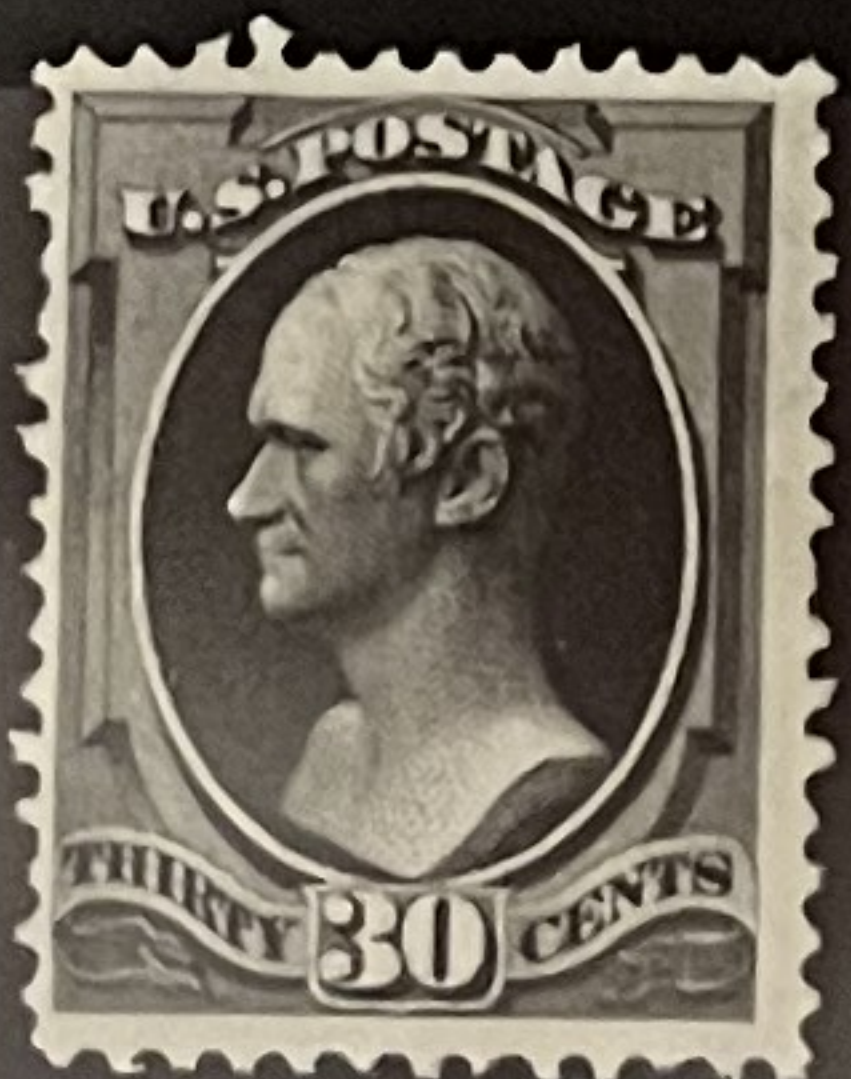
153
 (6 copies:
 1*, NG, badly
 faded;
 1 Dark color,
 cork, VF;
 1 Good color,
 cork & red cds 1/2;
 1 Good color,
 cork, scuff E;
 1 Lt. color,
 cork;
 1 Lt. color,
 cork, lg. magn. R.



153?
 Dark color,
 Pen: is
 this a
 #175 Used?



154
 *, NG



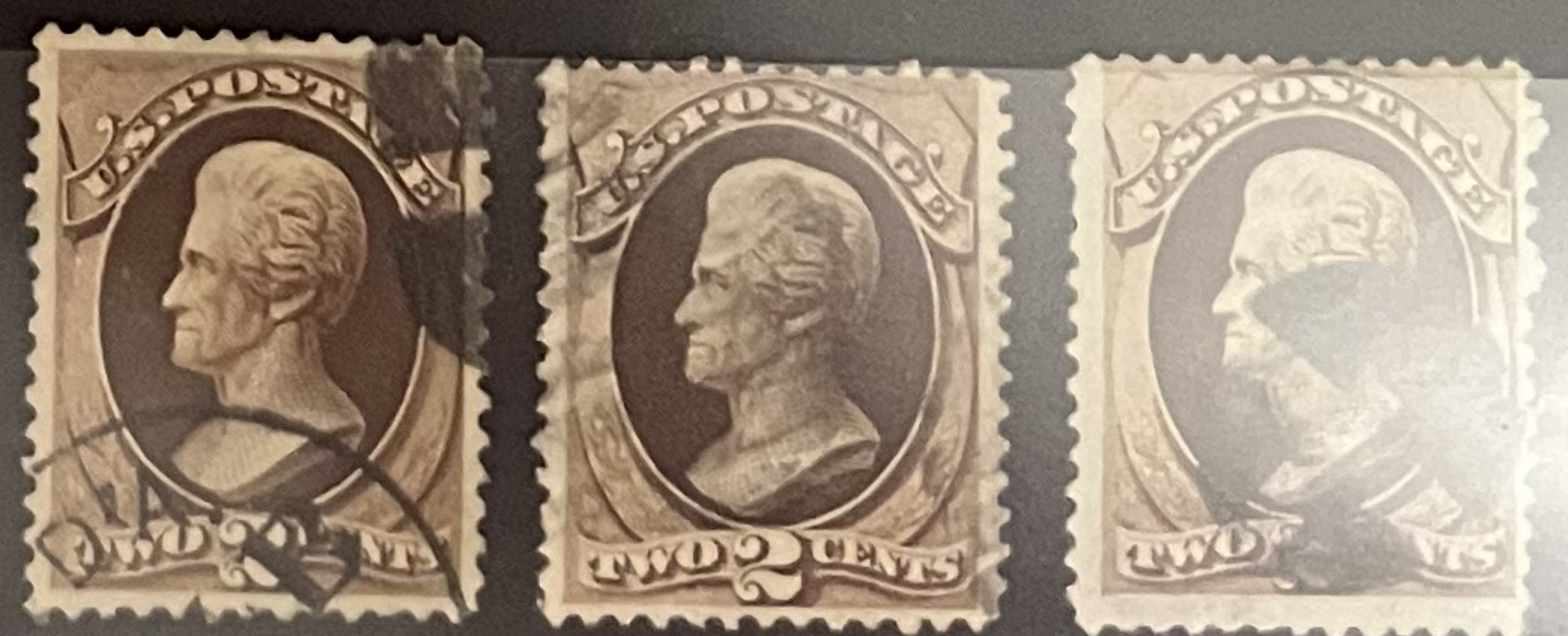
155
 (2 copies:
 1 Killer
 with "14";
 1 cork.)



156
 (3 copies:
 1 Lt. target;
 1 wedges;
 23-ring
 target.



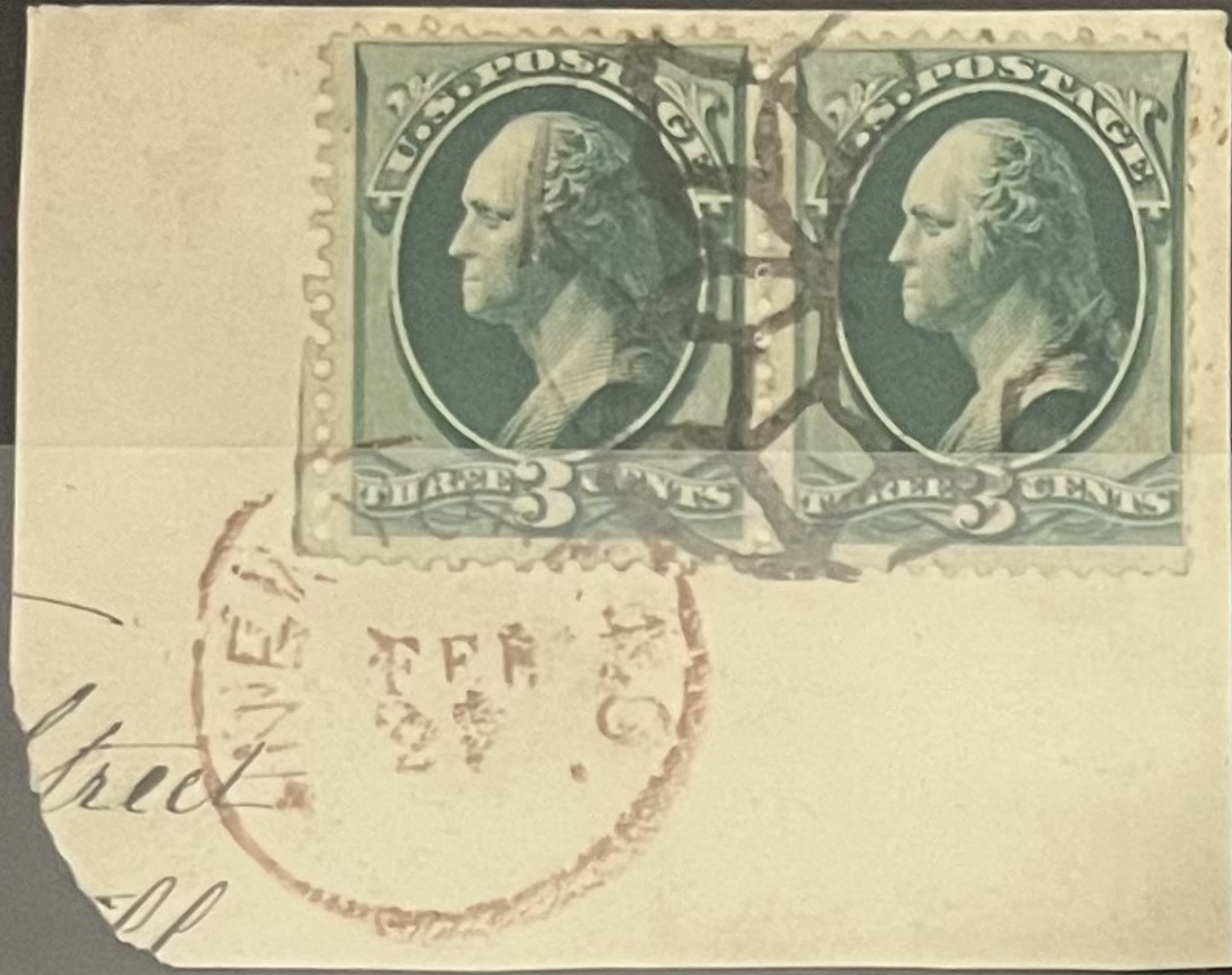
157
 (3 copies:
 1 cde. & cork;
 1 Lt. cover;
 1 4-Wedges)



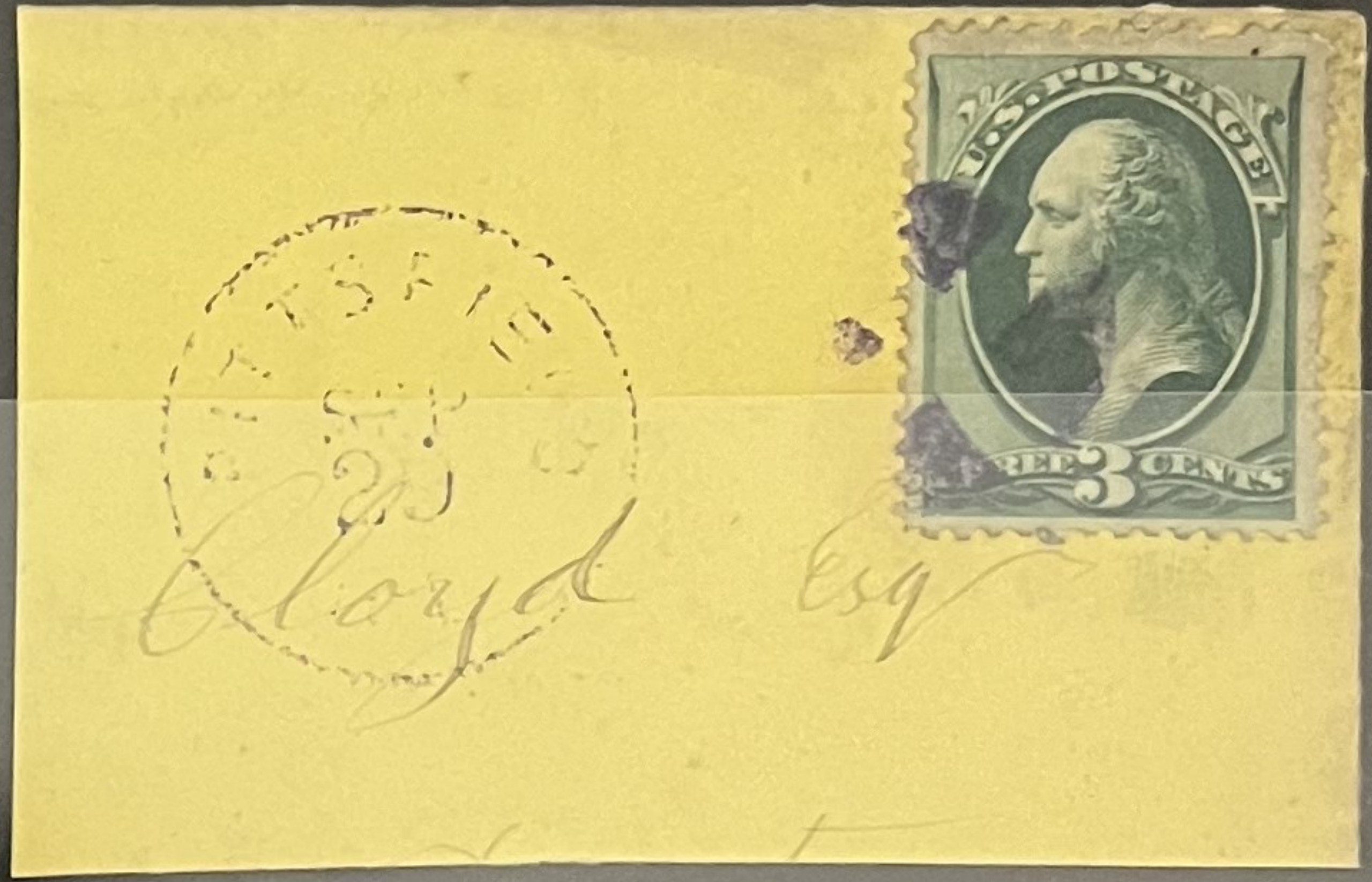
158 ①
 (6 copies:
 2 violet,
 2 blue,
 1 duplex,
 1 blue oval
 R. R. cancel?)



158
 Pair
 Δ
 N.Y.F.M.
 Cancel



158
 Purple
 Pittsfield
 duplex,
 On Piece
 (full corners)



159



160
 (3 copies:
 Grid-in-
 circle;
 Philadelphia
 CDS;
 N.Y.F.M.)



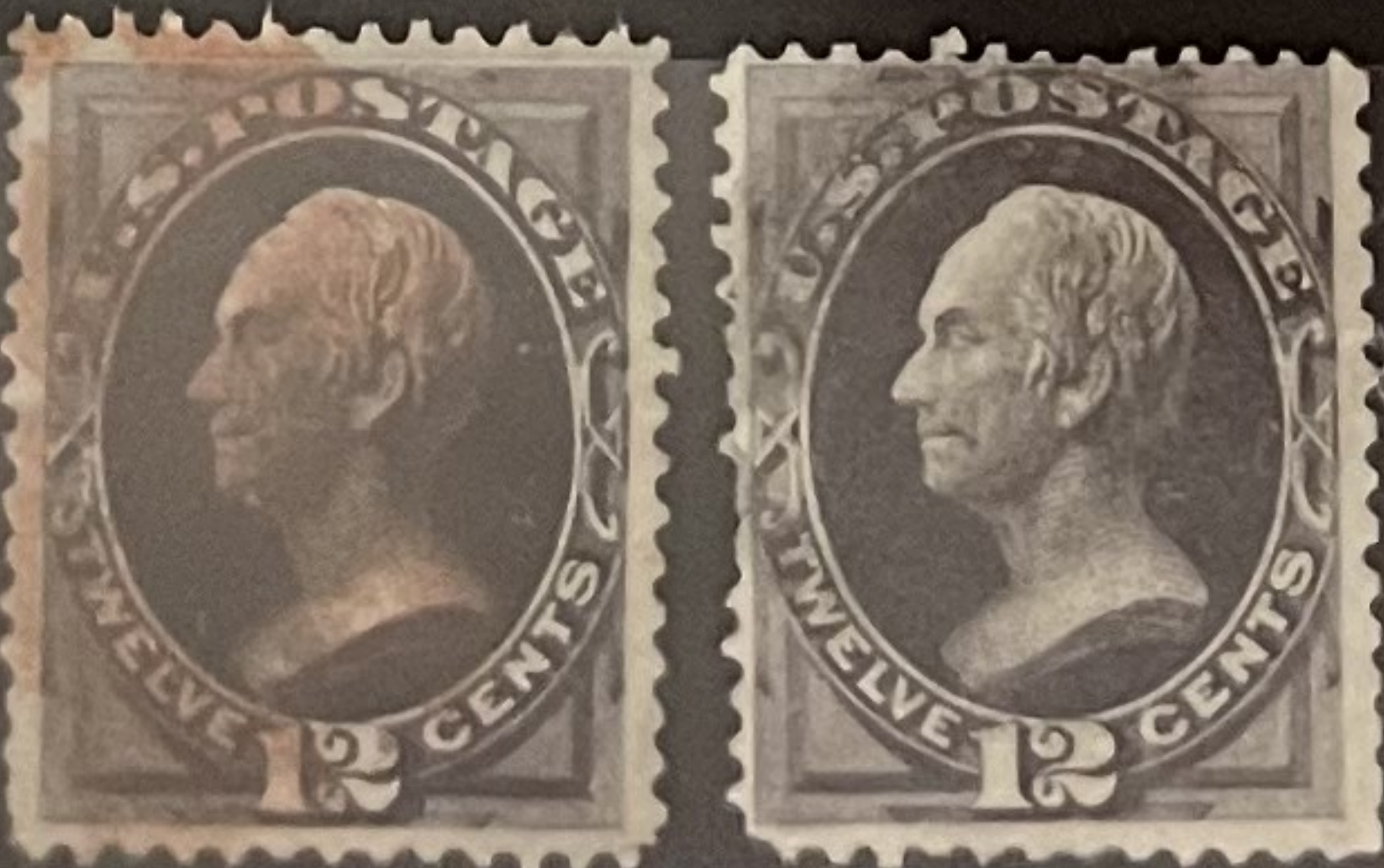
161
 (2 copies:
 N.Y. cds;
 Target or
 "a" circled)



161
 (2 copies:
 Blue grid;
 Blue Target)



162
 (2 copies:
 Red cork;
 Black -
 but reper.
 at R.?)



163
 (2 copies:
 N.Y.F.M;
 Duplex.)



165 ©
(4 copies:
Duplex,
Duplex killer,
Parr, &
Cork.)



166
(2 copies:
1*, NG,
Pulled pair;
Red cane.)



178
(7 copies:
Wis. cds.,
3 killers
"A", "P", & "L";
Cork;
Fancy killing;
Target.)



179
(5 copies:
Quinto
dark color;
Quinto Lt.
Color;
Supplement-
ary Mail
cds. (F);
Blue cork;
Black cork.)



182*
(2 copies:
*, Dist. 06;
*, Dist. 06,
tiny tint &
natural
paper
inclusion)



182 ©
(4 copies:
Jumbo,
blue 1880
duplex,
2 copies
[were a
Pair];
Killer "7";
Magenta
circle.)



183 (11):
* NG, 100
D.C. 1880 cds.
Chicago cds.
Blue cds.
Numeral "2"
Cork "C"
Killer "PO" (R)
N.Y. oval
Killer "F" (R)



184
(3 copies:
Cds. 1926!
No. states;
Target;
Heavy cork.)



185
(5 copies:
Gumbo &
tiny fault
TR corner;
Wadgas cork;
Blue circle;
Oval torn;
Lg. B. mark.
trace of Pl. #)



186
(4 copies:
Kansas cds;
Pa. cds;
No. dupl. /
Huge L. mark)



187
Pinholes



188
(3 copies:
Target,
VF-5, see
Faint Mark;
Circled "11"
Cds)



189
(4 copies:
N.Y. Supp-
lementary F;
N.Y. Cds.
7/12/79;
Grid;
Killer "4"
thin.)



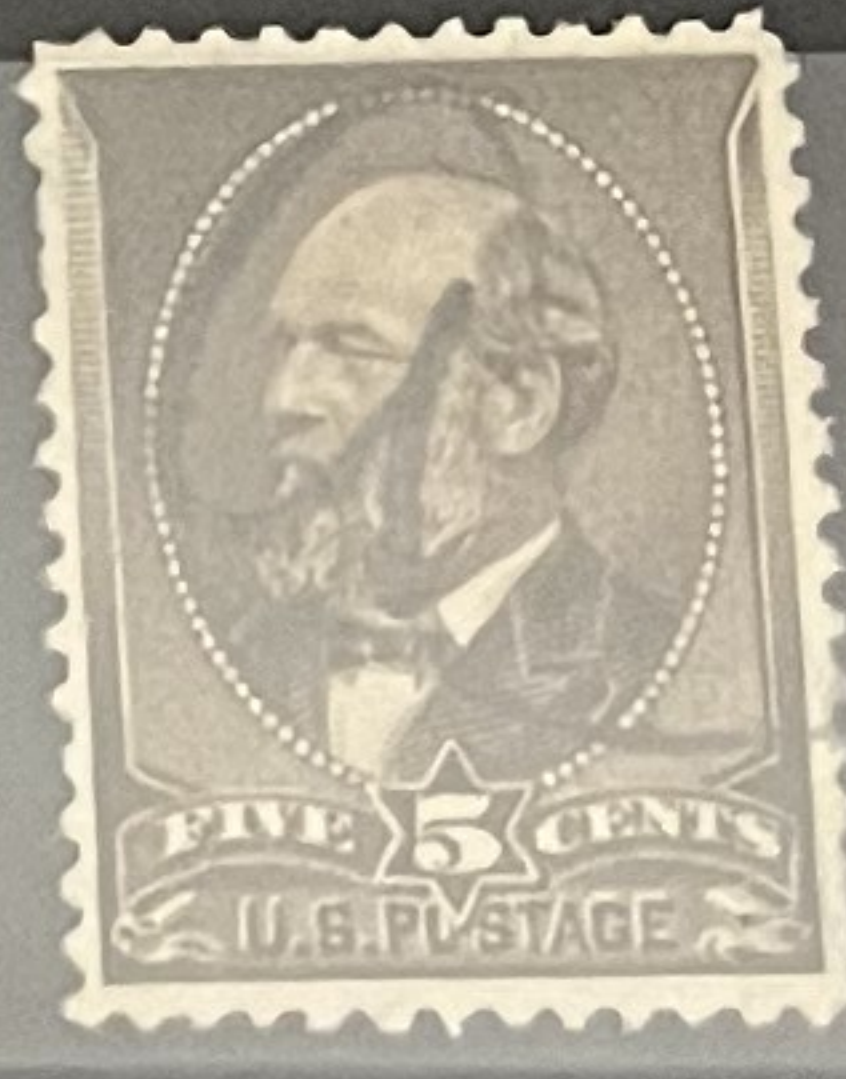
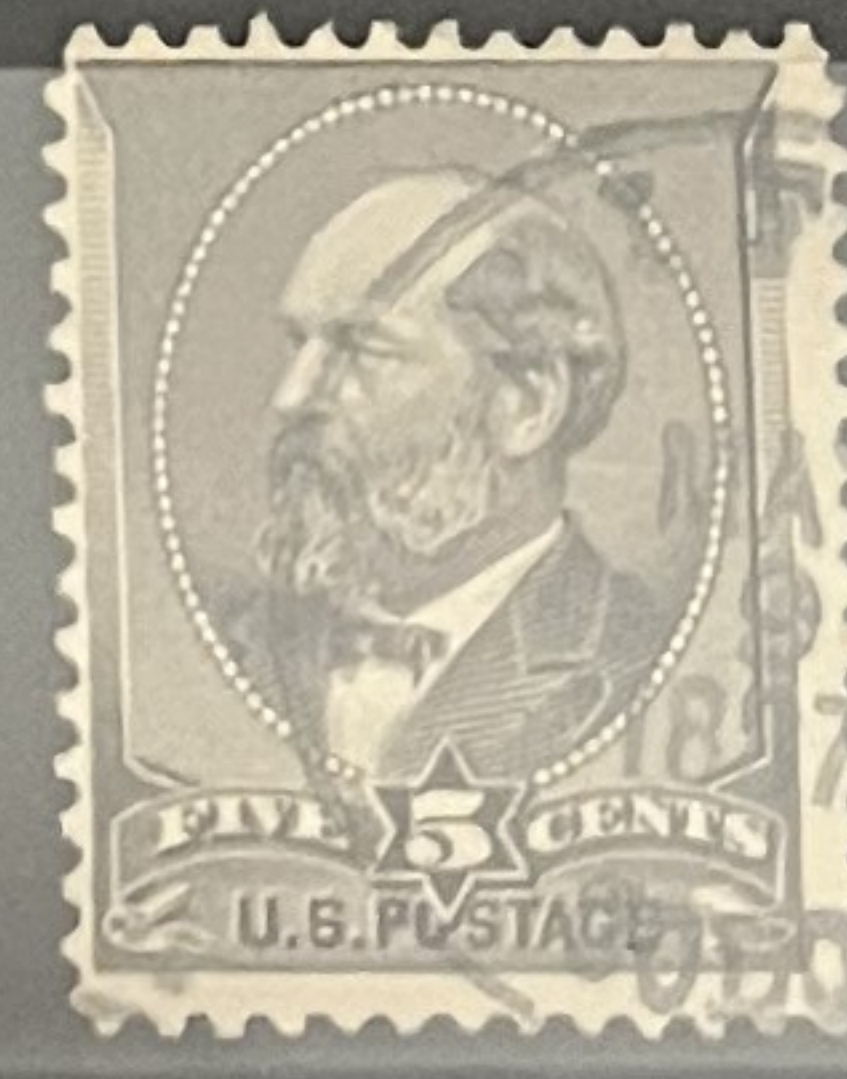
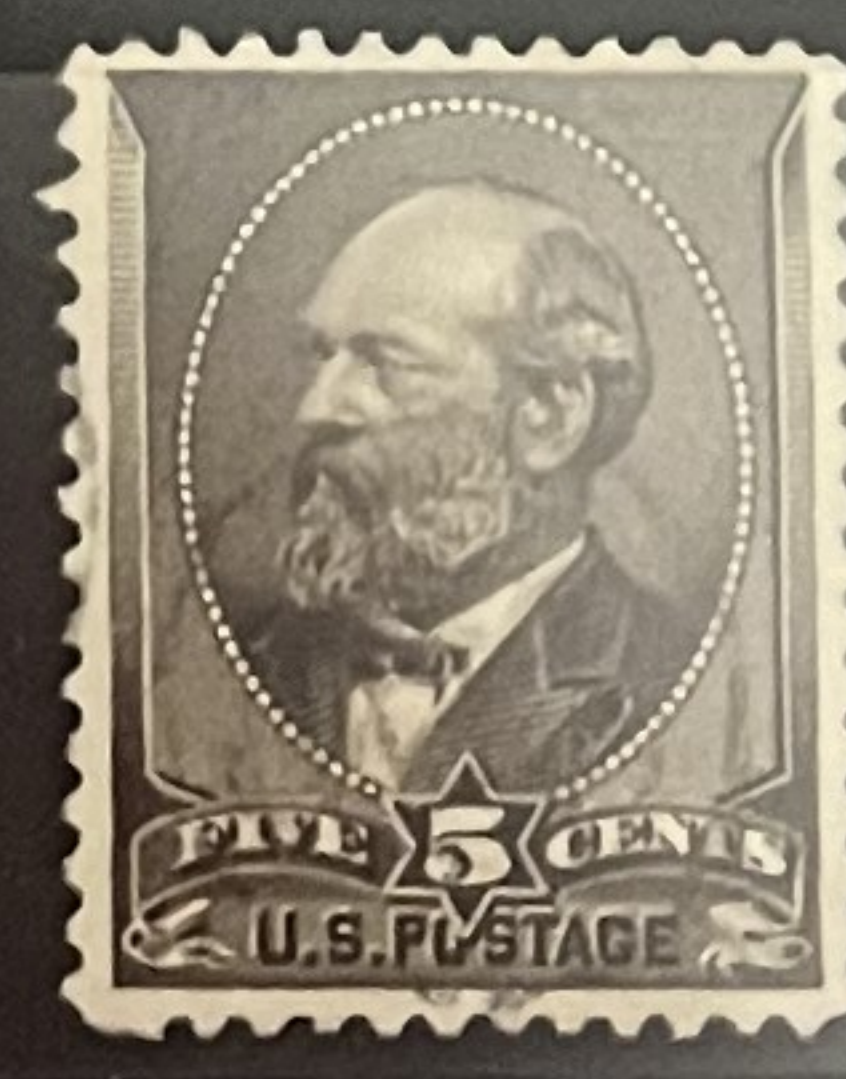
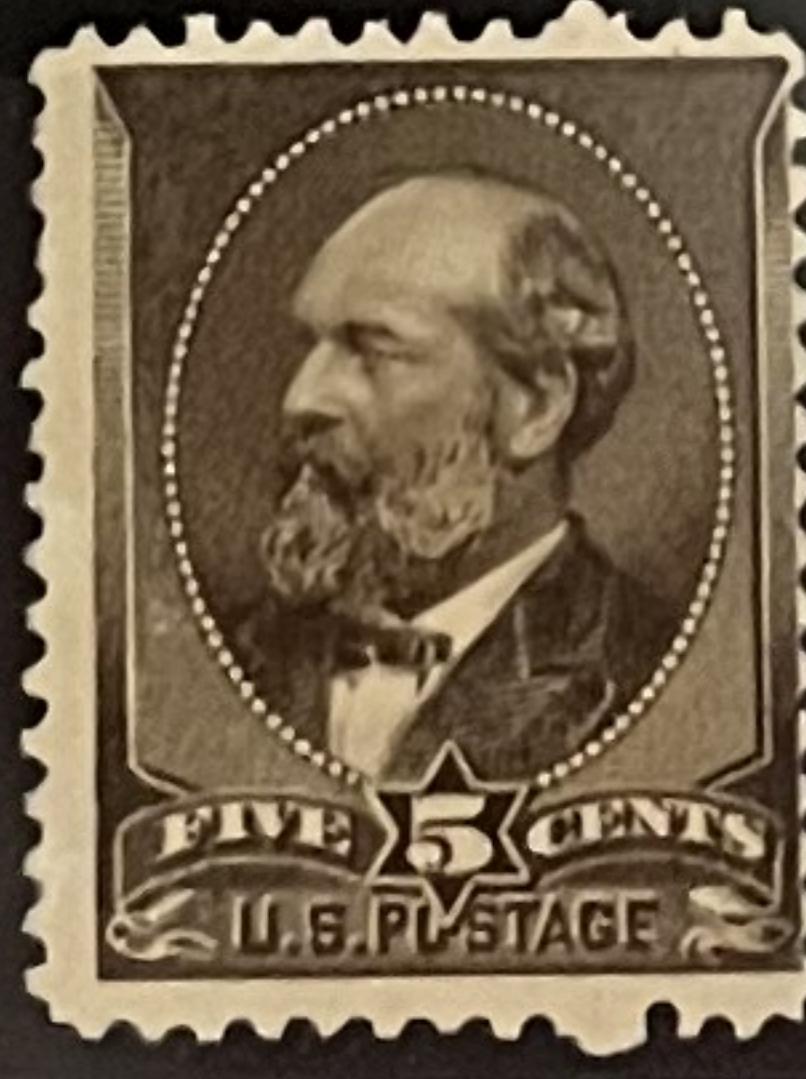
190
(3 copies:
Cock UL
VF-5;
Light killer
Cock LL
Thin)



191
(2 copies:
N.Y. Supp-
lementary
Type F;
Philadelphia
oval.)



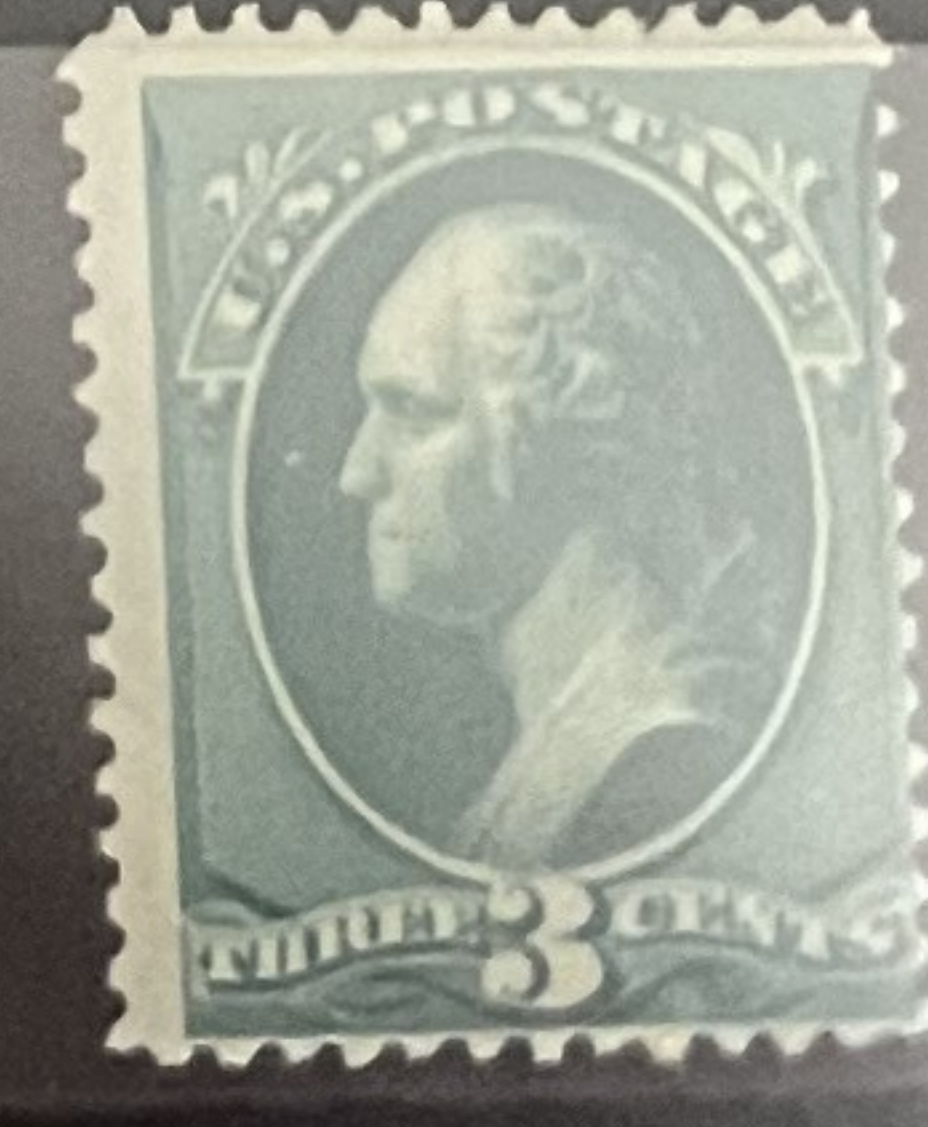
205
(5 copies:
1*, NG;
40;
It. target, VF;
Cds. Rifle,
Colo. 1887;
Pan "a";
St. lines.)



206
(3 copies:
1*, OG;
20;
Mich. Cds
1887;
Oval)



207
*, OG



2070
(2 copies:
Superior,
Wisc. Cd.;
Target)



208
(3 copies:
1★, NG;
Killer "6";
Cork.)



209
★, OG



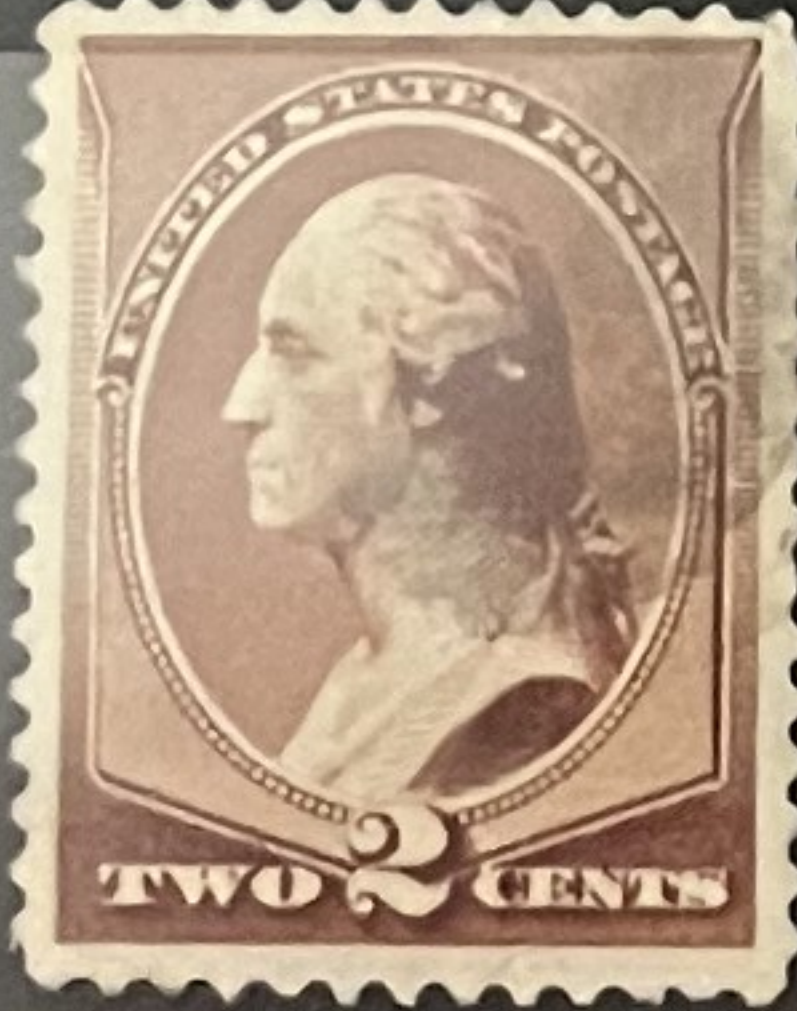
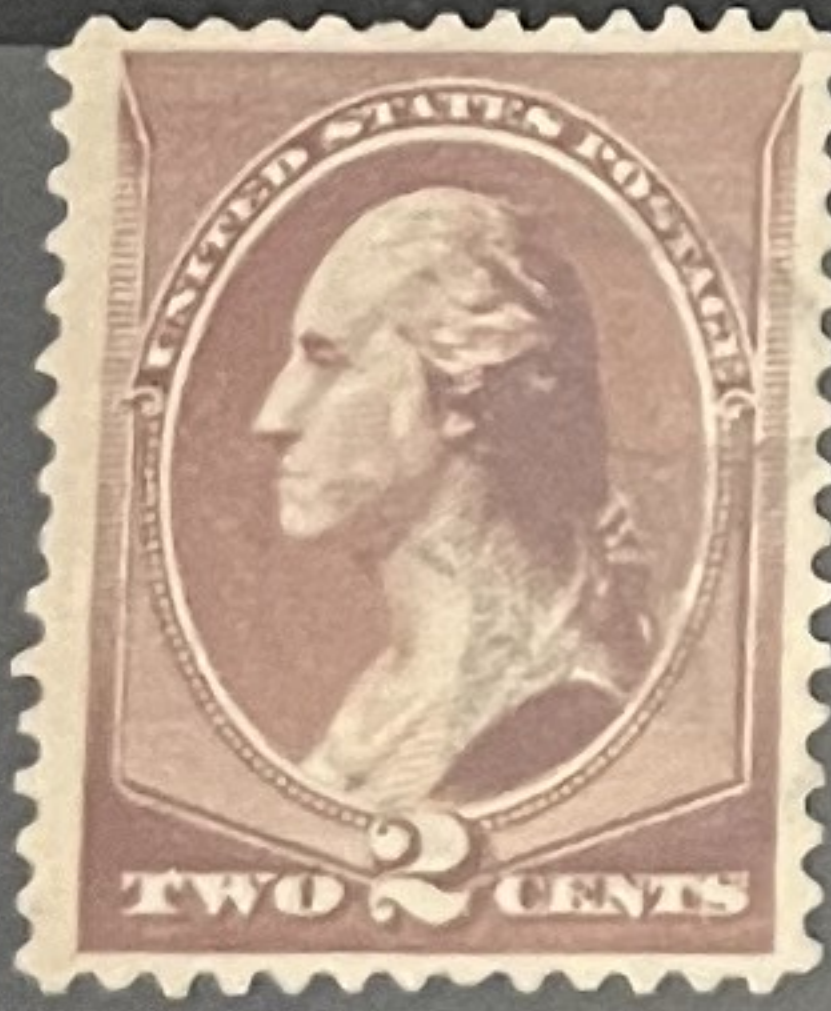
2090
(4 copies:
Killer No.,
VF-S;
Duplex w/
dbl. circle;
Pen "#";
Pen faint.)



210
★, Trace
of OG



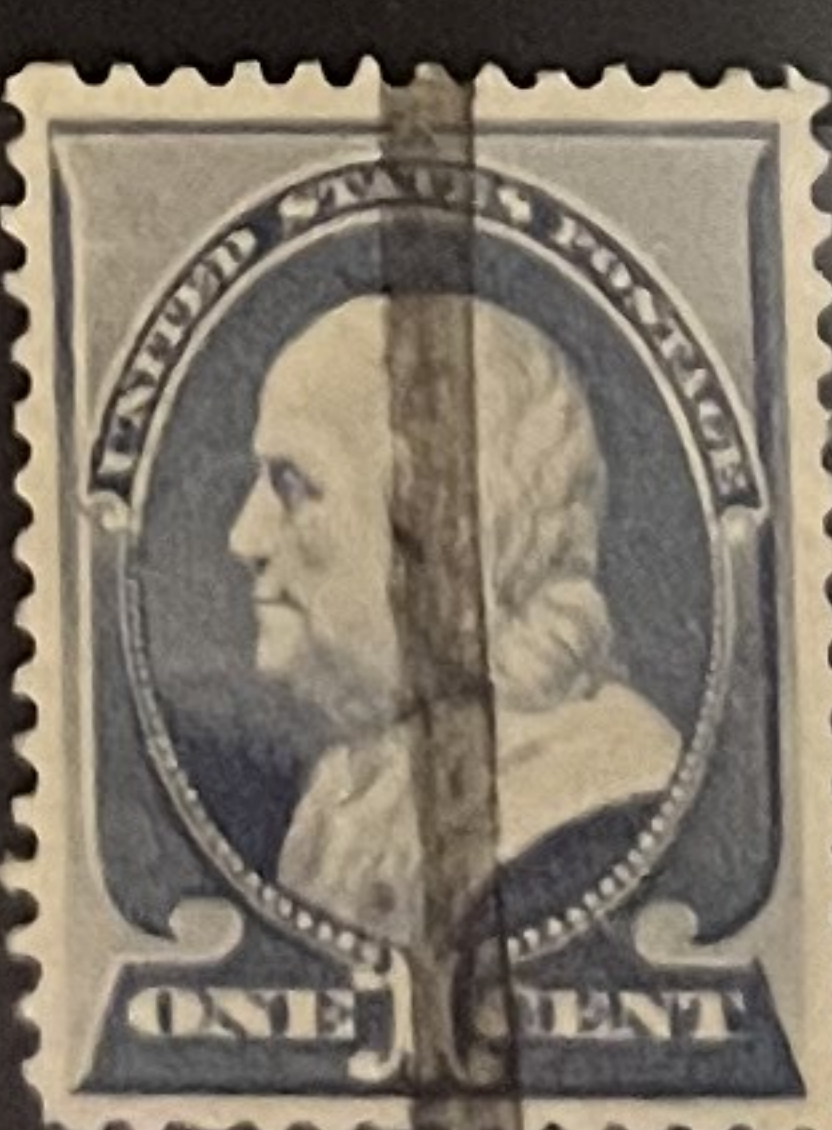
2100
(7 copies:
Circled Star
VF-S; Circled
Maltese, VF-S;
Lt. cork, VF;
Target, VF;
Cdo.;
6-line oval
killer, Violet,
On Piece;
Faint Crescent
Moon & Star,
On Piece.)



211
(2 copies:
1★, NG;
Lt. Target
10)



212
(5 copies:
1★, OG;
Cdo.;
MS line;
Lt. crescent
UL;
Philly oval)



213
 (5 copies:
 H, NG;
 Display;
 Junete;
 Killer "1";
 Violet cds;
 Kansas;
 Brooklyn
 cds.)



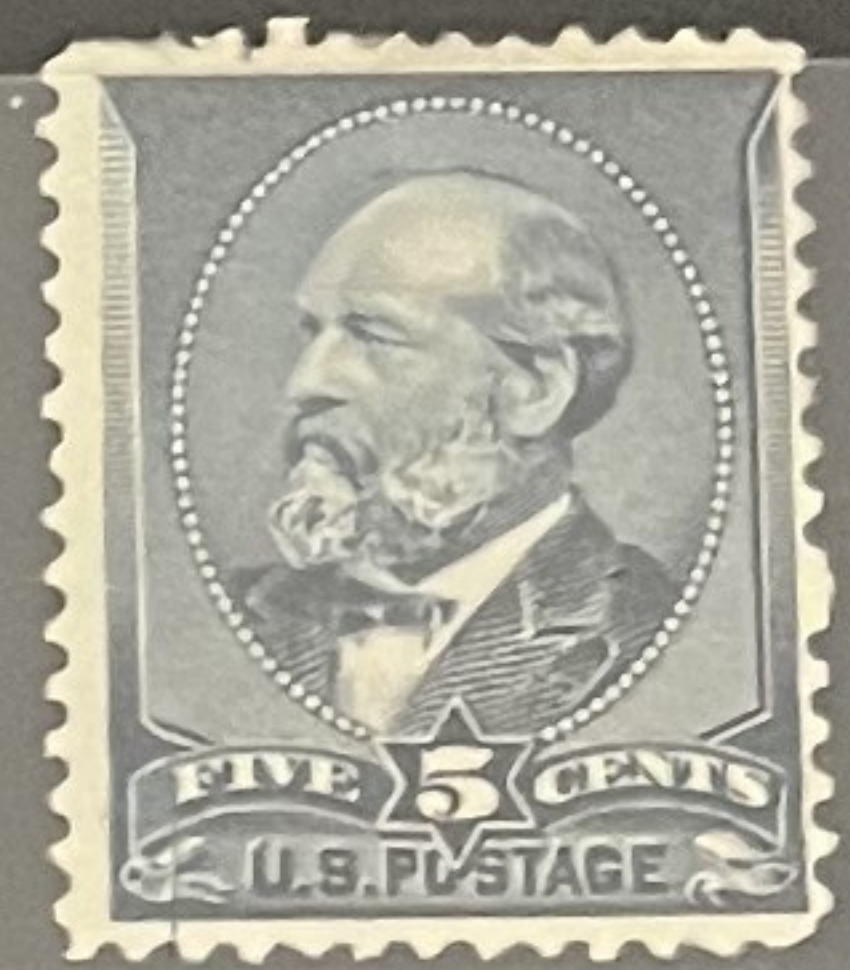
214
 (5 copies:
 H, NG;
 Oval REG;
 Oval "1889";
 Cds. Balti-
 more;
 Oval "3".)



215
 (2 copies:
 Display;
 Killer "1".)



216 Var.
 Cracked
 Plate?
 See vertical
 line Lh
 from B. to
 L. of "FIVE";
 H, OG



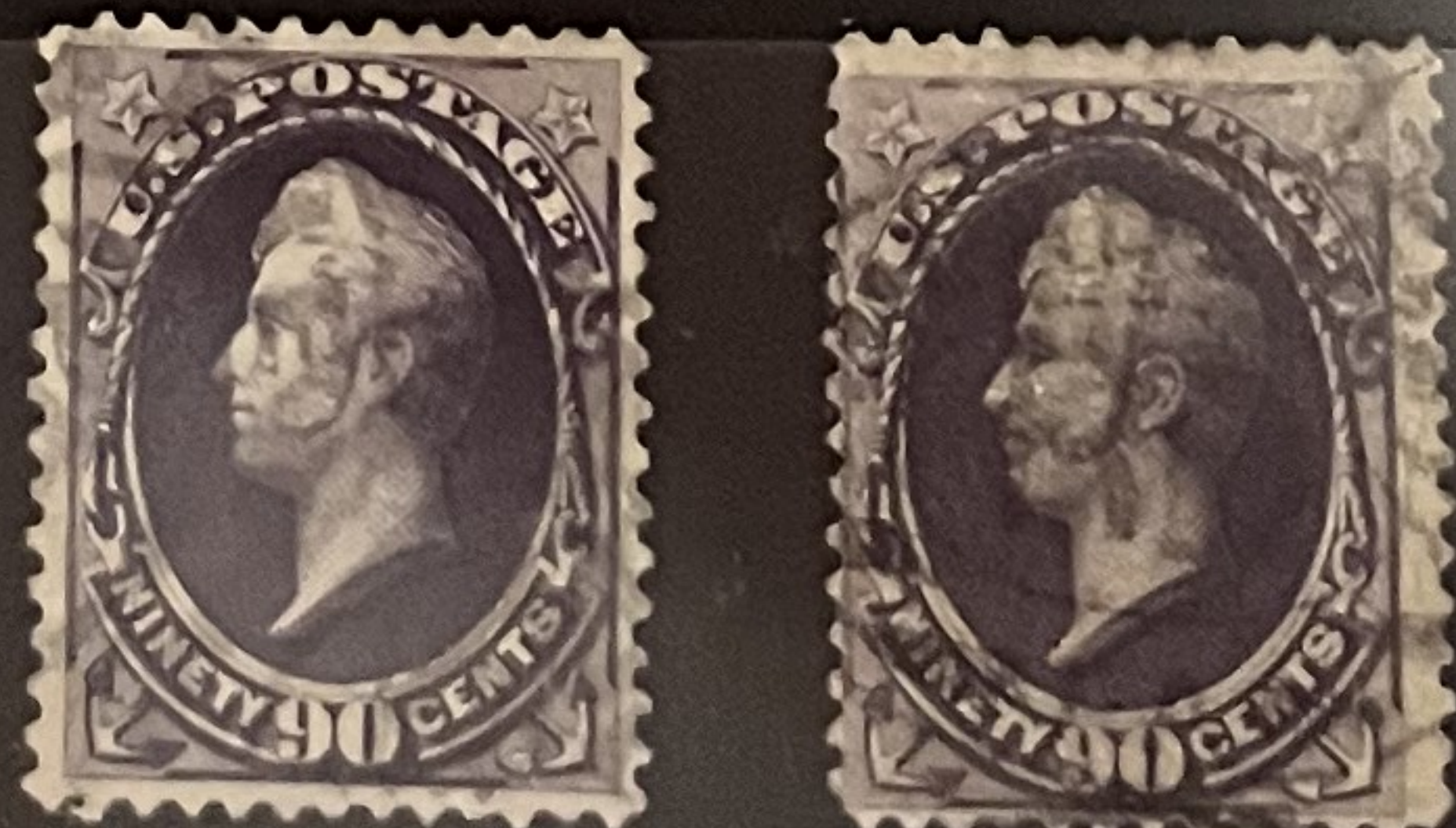
216
 (3 copies;
 H, NG, SE;
 Oval "1889";
 Killer.)



217
 (4 copies:
 Lt. killer;
 Baltimore
 1890 cds.;
 Philly oval;
 Killer "2".)



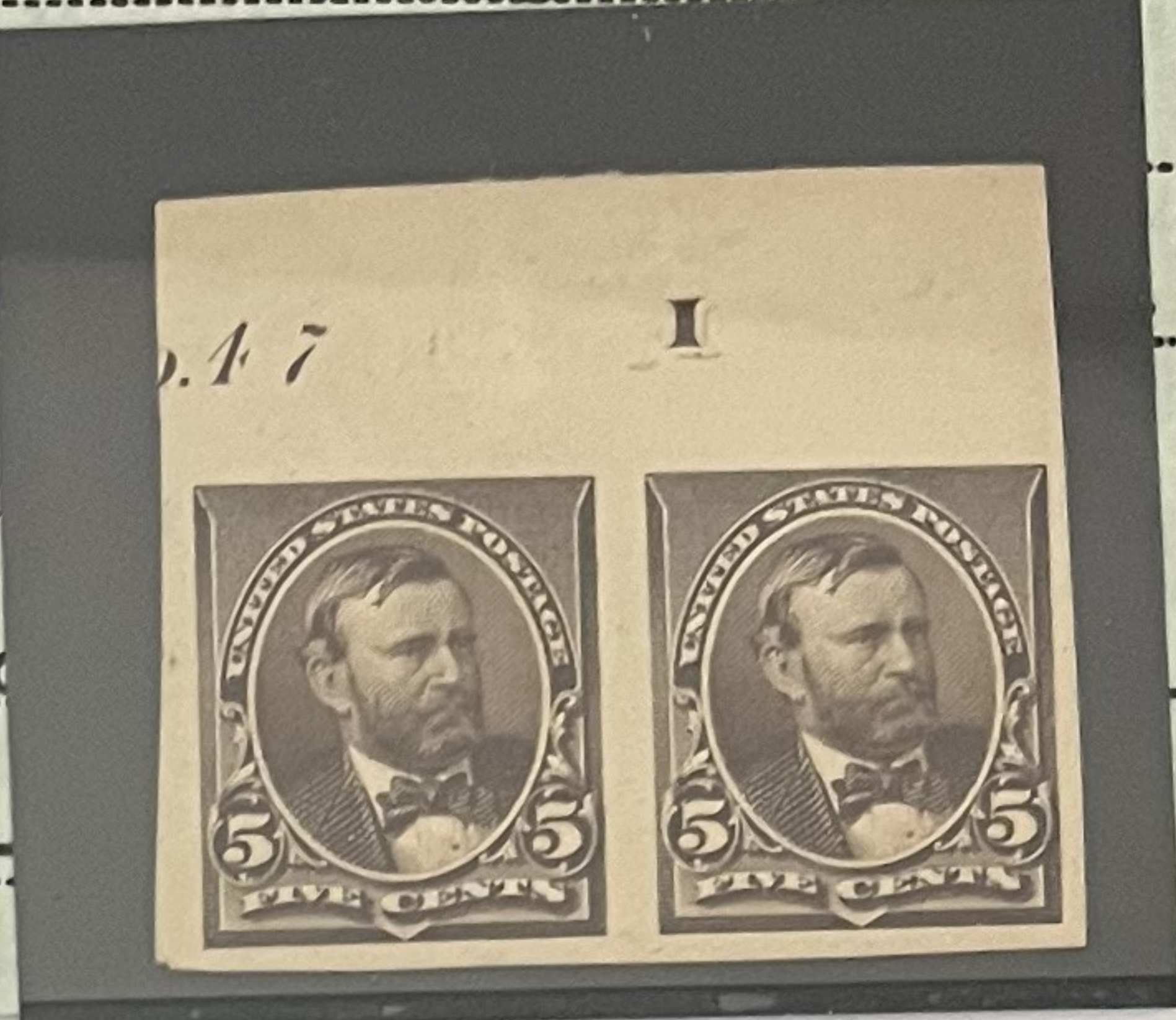
218
 (2 copies:
 Oval,
 centered
 bit R.;
 Philly
 oval, cent.
 way L.)



EXPERT COMMITTEE

We have examined the enclosed USA
1890, 5¢, chocolate, top margin imperforate
pair, plate # 47-I, unused, o.g. -----

submitted by Richard Wo
of which a photograph is attached
that it is genuine Scott



223Pb (current) ?
But, this is (as P.F.C.
states) Chocolate (not
Yellow Brown, which
was old Scott No. 223b,
which is what P.F.C. calls
it, but its not that color
as P.F.C. admits, so P.F.C.
is contradictory!) Also,
Brookman lists imperfs.
from Plate I 46, but
this is I 47. So, is this
a Plate Proof Pair ?
★, OG, P.F. Cat. # 44363.

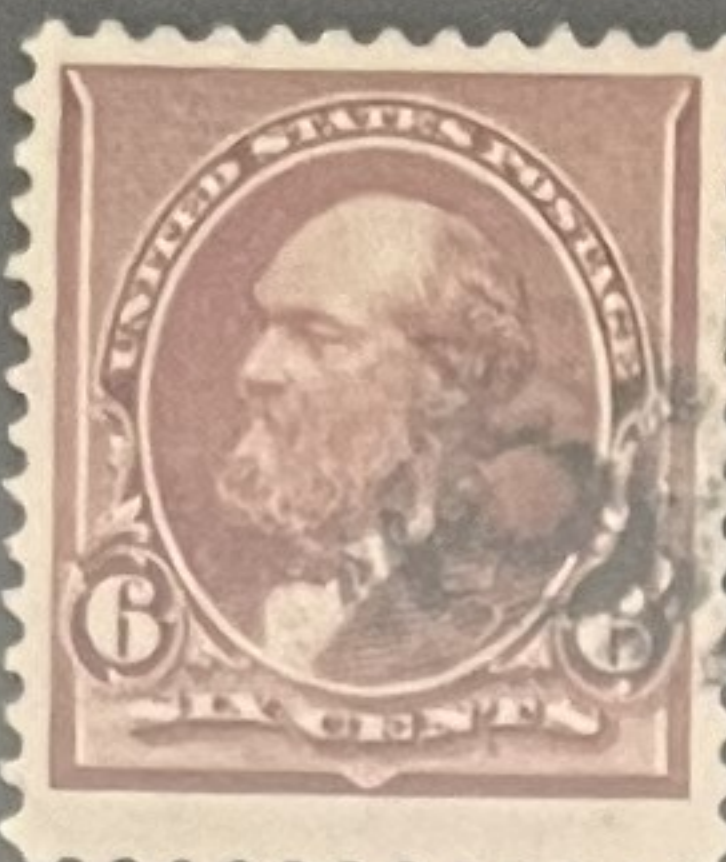
219-
229
(cpl.
set),
★, NG.



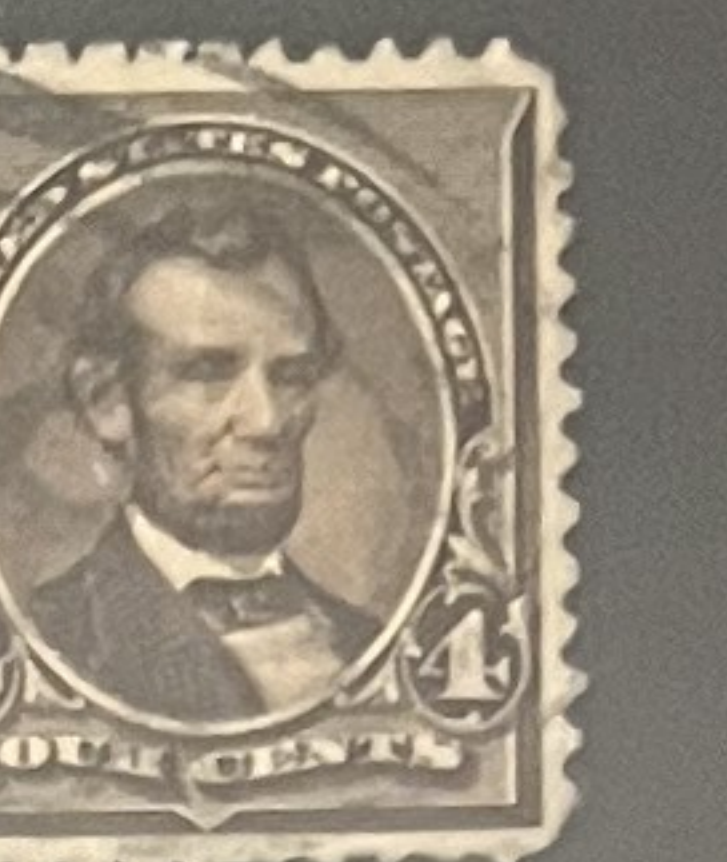
219D
Huge imperf
T. & B.
Δ 8/1/90.



219, 220,
224, 226,
& 226
© & Ex. F.



219D, 220,
222, 223(a),
224, 225,
226(2),
227(3),
228(2),
229
© & Sound



223 pair
©



229
Rich
color,
VF



1894 Postal
Counterfeit
(#250),
the cause of
subsequent
watermarking;
*, OG, NH.



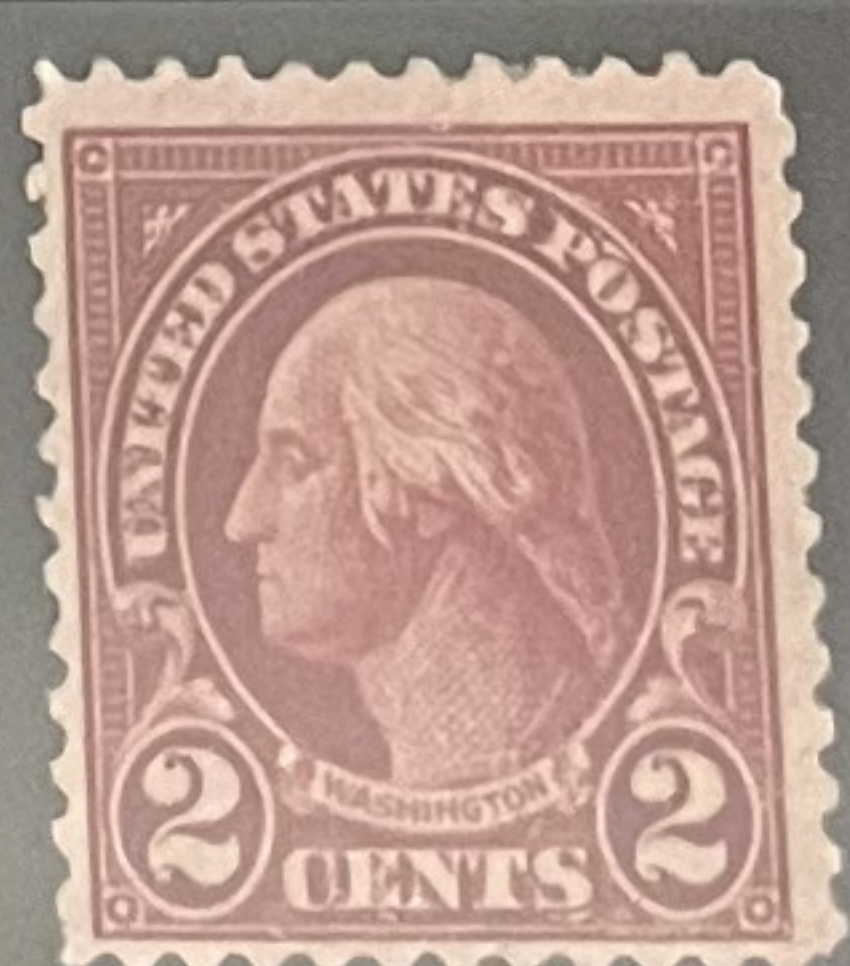
Series 1912
Postal
Counterfeit
of #406 type;
*, OG, NH.



Series 1922
Postal
Counterfeit
of #554
type;
*, OG, NH.



"595" *OG
"FAKE";
I've forgotten
if a postal
counterfeit,
or fake paper,
or what.



Postal
Counterfeit
of #634
(c. 1926),
Postally
used.



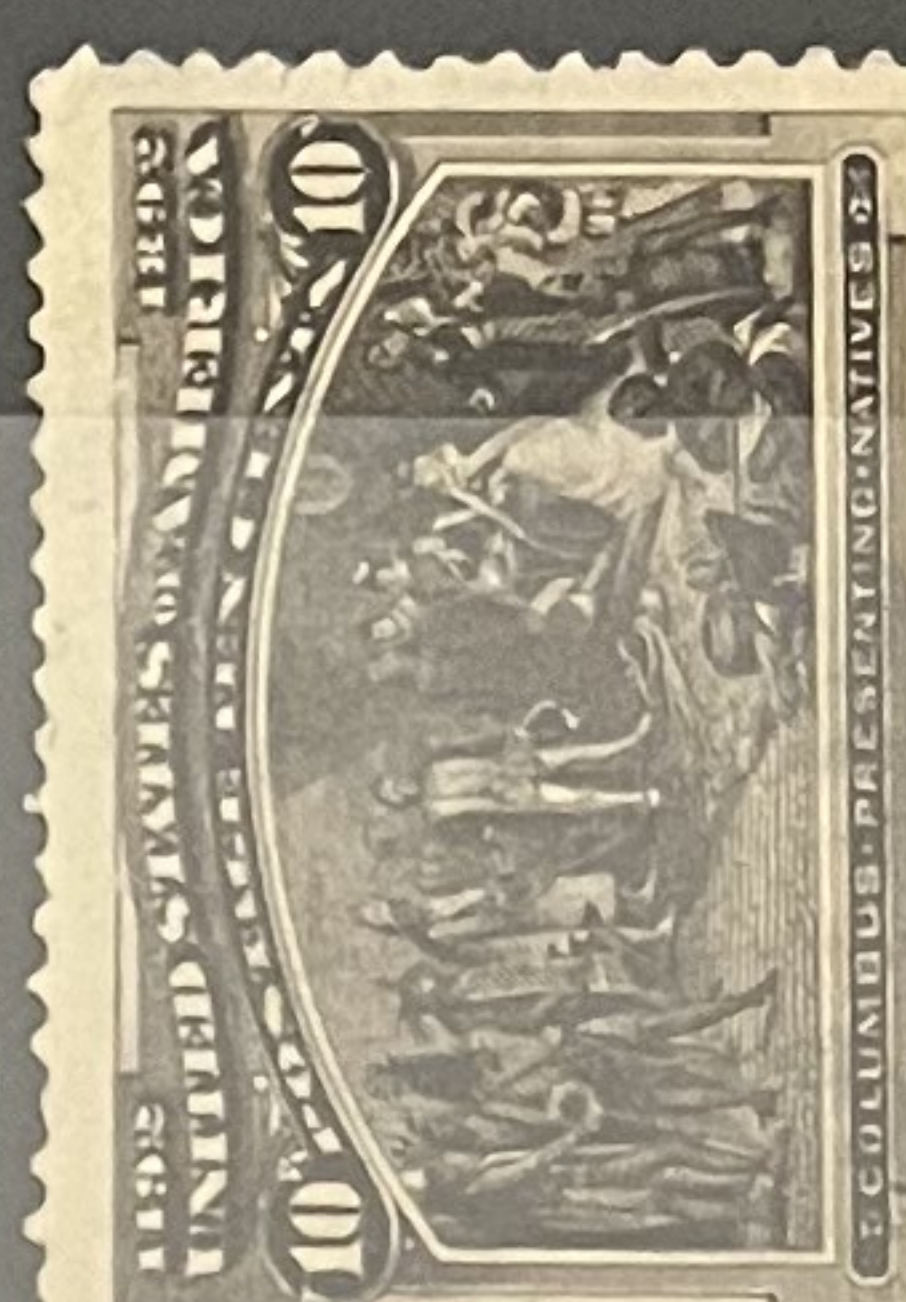
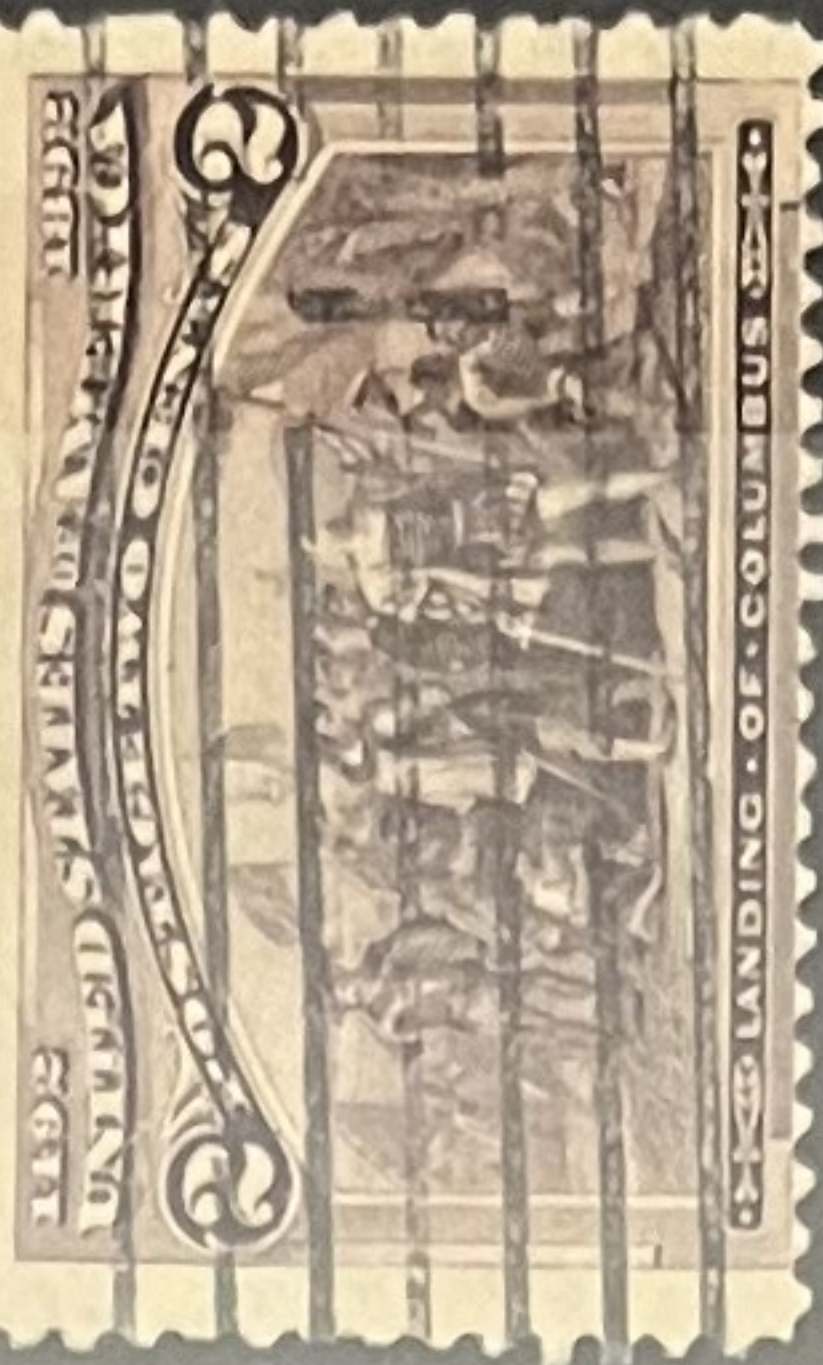
© 69
"facsimile"
engraved
#?



PR 2
or
PR 6
FAKE
#?



230(2), 231(3),
232, 234,
235(3), 236(2),
237(2):
All ©, most
are sound.



2390
(2 copies;
Cds. LL;
SF. lines)

2400
(2 copies;
lt. conc.;
duplex.)

2410
(3 copies;
Oval;
lt. oval
at R. 5
Pen &
blue line)



2420
(Reprints:
N.Y. oval,
VF;
N.Y. oval,
F.)

2440
Cds.
at L.
"... CE
VILLE"

245 ★
"Regummed"
PFC 533714



The Philatelic Foundation

No. 533616
01/26/2016
341 West 38th Street • 5th Floor
New York, NY 10018
EXPERT COMMITTEE

We have examined the enclosed item, of which a photograph is attached, and *described by the applicant* as follows:

Country: UNITED STATES OF AMERICA

Cat. No.	Issue	Denom.	Color
278	1895	\$5.00	dark green

Scott's unless otherwise specified.
USED,

AND WE ARE OF THE OPINION THAT:

IT IS A USED SCOTT 278, BUT WITH MARGIN ADDED AT RIGHT, AND TWO TINY FILLED THINS AT BOTTOM LEFT. *****



533616

F 274356

For The Expert Committee
Chairman

Photocopies of this Certificate are not valid.

2450
Light
CDS.

278
Repairs
PFC533616



285(2),
286(6),
287, 288,
289, \$
290(2):
○



2910
Light oval,
VF centering
(May look
reperf. at L,
but an over-
lay suggests
okay to me.)



2910
Heavy
cancel,
1 short perf.
at R. 5
translucent
pinpoint
(does not
seem to be
a pinhole).



294, 295(3),
296, 297,
299(2);
⊙



323, 324,
325, 326(3),
327(2).
⊙



328
329
330
Used
&
Sound



367(2),
368(3),
370, 371,
372(2),
373(2);
All Used.



369
Centered
L. & B.
⊙



369
Centered
R. & B.
⊙
Thin



MOUNT ONLY ONE STAMP, PAIR, BLOCK OR COVER IN THIS SPACE. MOUNT ITEM SO IT CAN BE EASILY REMOVED FOR EXAMINATION. A SMALL ACETATE OR GLASSINE ENVELOPE IS RECOMMENDED.



Members of The American Philatelic Expertization Service have examined the item submitted and it is their opinion that it is *Scott No. 365, used, genuine in all respects.*

James T. DeVore
(APS Authorized Signature)

Cert No. 0570950

Cat. No. 365



Philatelic Stamp Authentication & Grading, Inc.

www.psaginc.com

EXPERT COMMITTEE OPINION:

Cat#	Issue	Denom.	Shade
365	1909	13c	Blue Green

"it is genuine unused, no gum with FAKE CANCELATION".

James T. DeVore
Acting Committee Chairman

3/1/2016
Date

397(3);
 398(2, one
 has comp. perf.
 crease);
 399(3);
 400(2, one
 with small
 thin);
 400A(2);
 All Used
 some lovely
 centering.



401(2, one
 has thin on
 perf.),
 402, 403,
 404
 All Used &
 off-center.



735(5)
 Each with
 duplex
 Cadams,
 Nabr.,
 2/13/1934.

UNDER AUTHORITY OF
 JAMES A. FARLEY, POSTMASTER GENERAL

JAMES BYRD ANTARCTIC EXPEDITION I U.S. POSTAGE 3 CENTS	JAMES BYRD ANTARCTIC EXPEDITION I U.S. POSTAGE 3 CENTS	JAMES A BYRD ANTARCTIC EXPEDITION I U.S. POSTAGE 3 CENTS	JAMES BYRD ANTARCTIC EXPEDITION I U.S. POSTAGE 3 CENTS	BYRD ANTARCTIC EXPEDITION II U.S. POSTAGE 3 CENTS	BYRD ANTARCTIC EXPEDITION II U.S. POSTAGE 3 CENTS	BYRD ANTARCTIC EXPEDITION II U.S. POSTAGE 3 CENTS
PRINTED BY THE TREASURY DEPARTMENT, BUREAU OF ENGRAVING AND PRINTING NEW YORK	PRINTED BY THE TREASURY DEPARTMENT, BUREAU OF ENGRAVING AND PRINTING NEW YORK	PRINTED BY THE TREASURY DEPARTMENT, BUREAU OF ENGRAVING AND PRINTING NEW YORK	PRINTED BY THE TREASURY DEPARTMENT, BUREAU OF ENGRAVING AND PRINTING NEW YORK	PRINTED BY THE TREASURY DEPARTMENT, BUREAU OF ENGRAVING AND PRINTING NEW YORK, N.Y., FEBRUARY 10-18, 1934 PLATE NUMBER 21184	IN COMPLIMENT TO THE NATIONAL STAMP EXHIBITION OF 1934	

"Wholesale" lot of Used: 286 (46),
 294 (20), 295 (91), 740-749 (103,
 incl. 8 sets, some blocks), & CE1-
 CE2 (48, 24 of each, mostly blocks);
 286 & 294 Average, Rest F-VF.
 Catalog Value \$369.60 in 2015

#286: 46 Used singles
 most Ave.



2015
 \$126.50

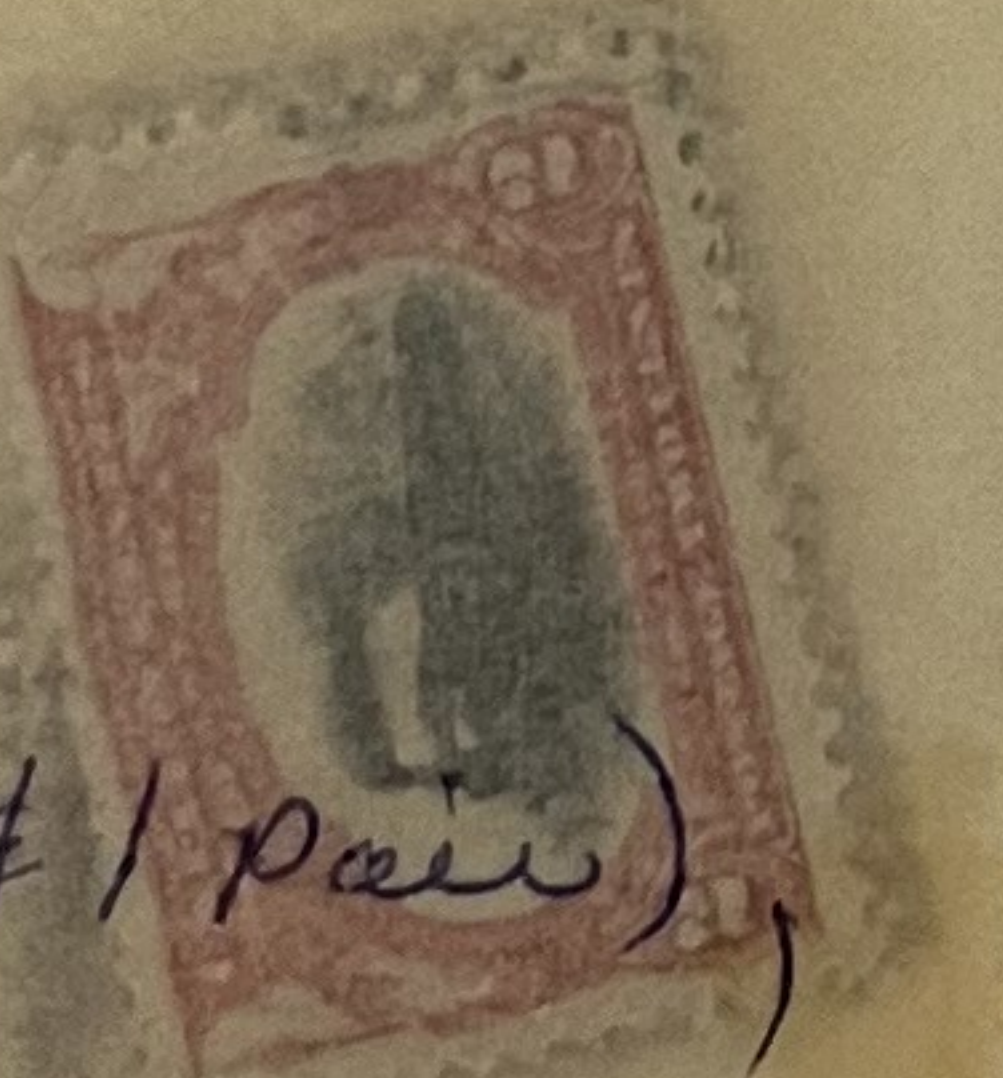
#294: 20 Used sgls.,
 Ave.



2015
 \$60.00

#295

~~100~~
~~for~~



91 Used (89 singles & 1 pair),

most F-VF, incl. vignette

shifts in all directions, & shades.

2015
 \$91.00

740-749 Used

103 stamps, from 8-12 copies
 of each, hence 8 sets; spls,
 pairs, & blocks;

1¢-12	5¢-11	8¢-9
2¢-11	6¢-8	9¢-11
3¢-12	7¢-11	10¢-9
4¢-9		

2015
 \$65.90

CE1 240 (6 blocks of 4)
 CE2 240 (5 blocks of 4, incl. line blocks,
 1 pair, & 2 singles)



2015
 \$26.20