

GIBRALTAR

GOVERNMENT—British crown colony at the western entrance to the Mediterranean Sea, consisting of a huge rock. The whole territory being less than three miles long and from 1-4 to 3-4 miles wide.

COINAGE—12 pence=1 shilling. 100 centimos=1 peseta.

Watermarked Crown and C. A.

1886



26. 6.50 15. 4.75 120. 330. 400.



18.50 5. 36. 142.50 90. 145. 250.



22. 25. 24. 26. 27. 347.75



5. CENTIMOS 10 CENTIMOS 25 CENTIMOS 40 CENTIMOS 50 CENTIMOS 75 CENTIMOS



1 PESETA 5 PESETAS

1895



20 CENTIMOS 1 PESETA 2 PESETAS

319.

1898



9. 13. 17. 25.55

2619.05

GIBRALTAR

REGISTRATION ENVELOPES

1886



1887



1889



On first issue.
On 2 P.
20 C.
BLUE

1889



WRAPPERS

1886



1887



1 P.
CARMINE

1889



On 1 P.
10 C.
CARMINE

1889

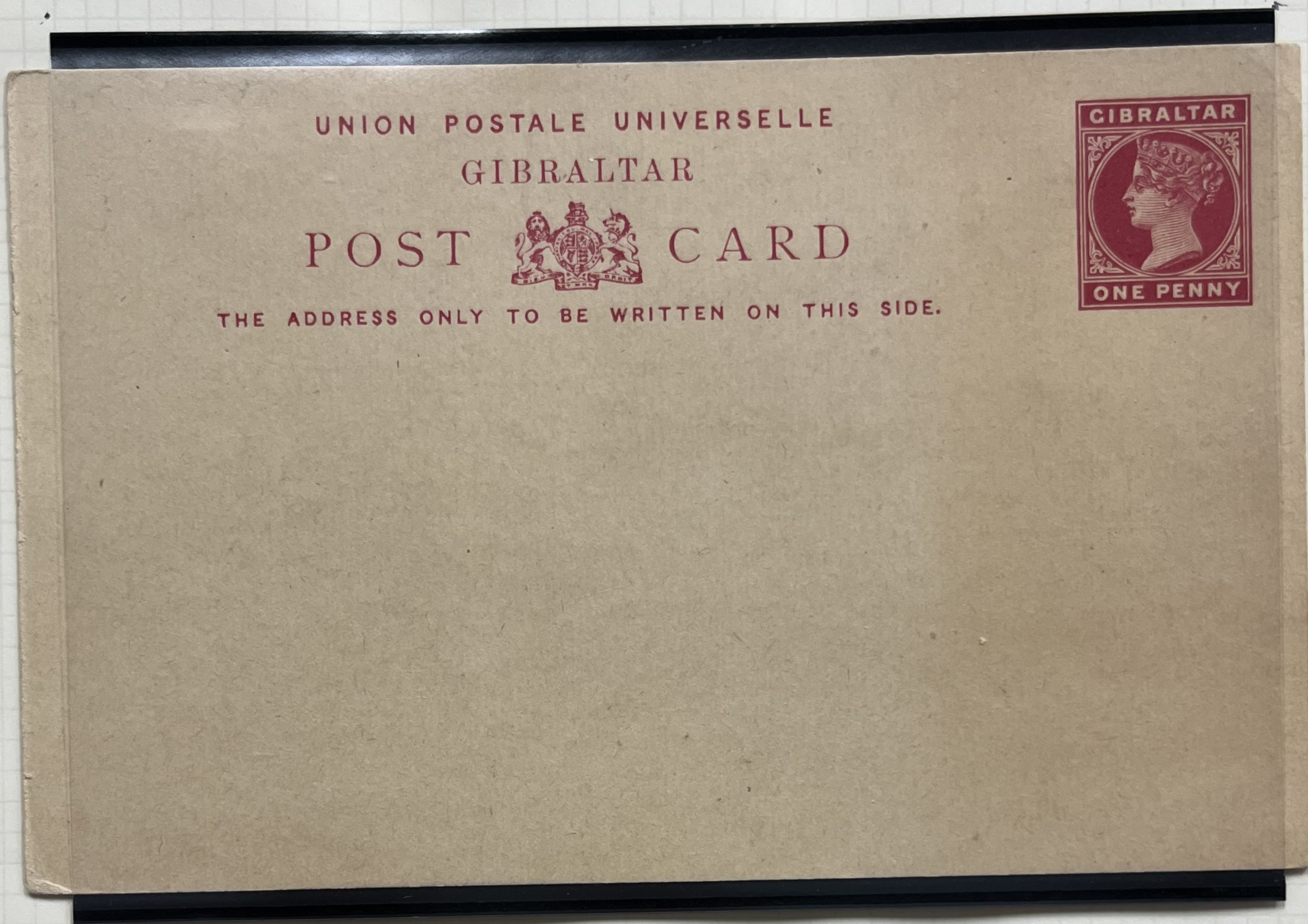


10 C.
CARMINE



GIBRALTAR

1887



1889

