

NIGER COAST PROTECTORATE

COINAGE—Same as in Great Britain.

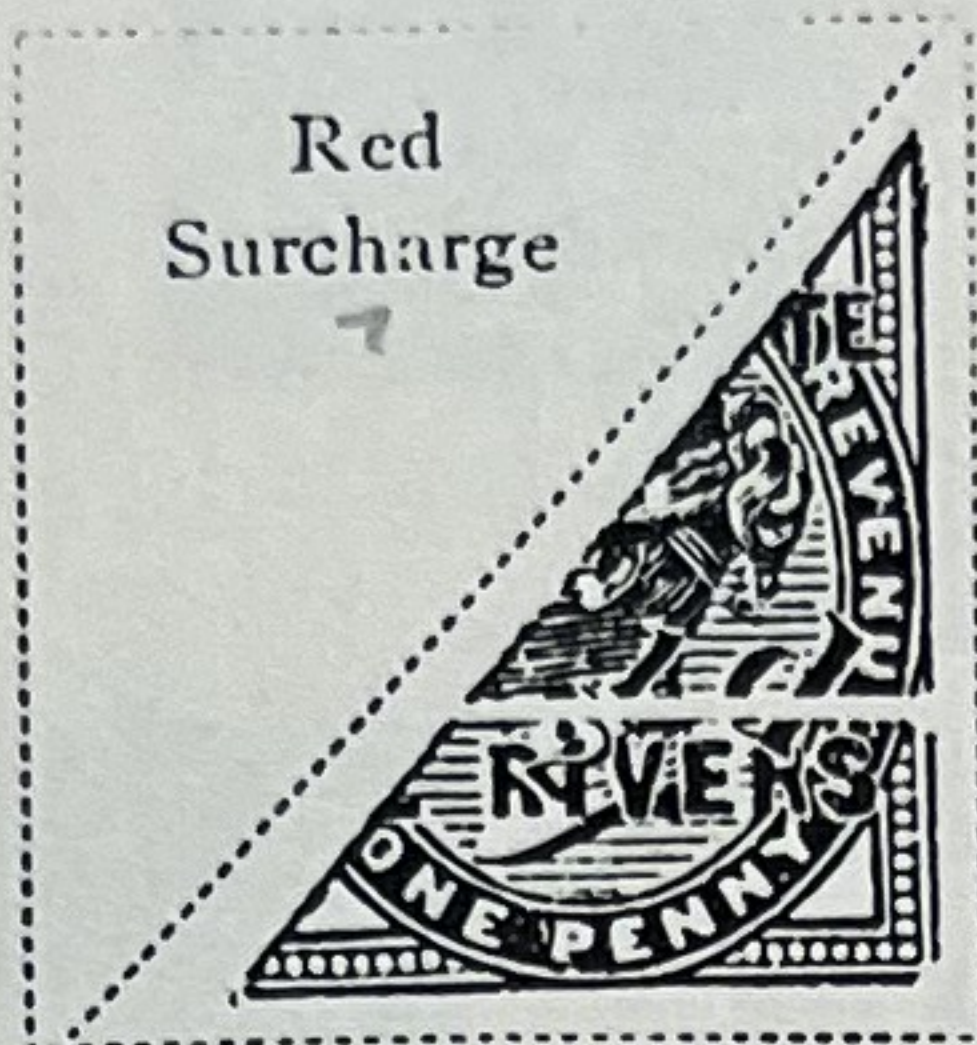
See album and ad. after mention of Oil Rivers—so-called because palm oil formed the staple article of commerce, and the various streams which drain the Niger Coast near the mouth of the great river, became known as "Oil Rivers."

Watermarked Imperial Crown

1892



1893



Same
Violet Surcharge
 $\frac{1}{2}$ P
On half of
1 P
LILAC

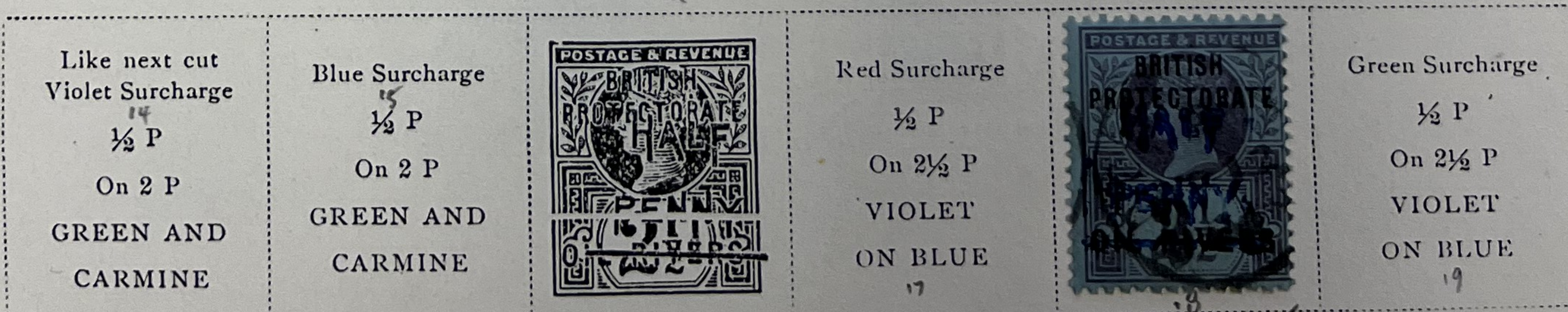
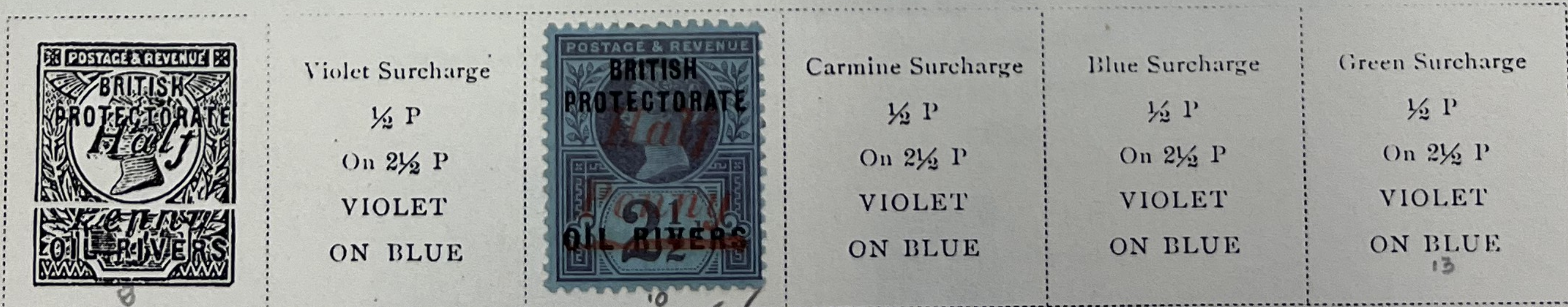
Unwatermarked

1893



Watermarked Imperial Crown

1893



183-

26.25

425






5 450

1154.25

NIGER COAST PROTECTORATE

Watermarked Imperial Crown

1893

<p>Like cut Violet Surcharge ½ P On 2 P GREEN AND CARMINE 20</p>			<p>Bluish Black Surcharge ½ P On 2½ P VIOLET ON BLUE</p>	<p>Blue Surcharge ½ P On 2½ P VIOLET ON BLUE 24</p>		<p>Black Surcharge ½ P On 2½ P VIOLET ON BLUE</p>
			<p>Green Surcharge ½ P On 2½ P VIOLET ON BLUE 28</p>			
			<p>Red Surcharge 1 S On 2 P GREEN AND CARMINE</p>	<p>Black Surcharge 1 S On 2 P GREEN AND CARMINE</p>		
<p>5/- <hr/>On 2 P GREEN AND CARMINE</p>	<p>Red Surcharge 10 S On 5 P LILAC AND BLUE</p>	<p>Violet Surcharge 20 S On 1 S GREEN</p>	<p>Red Surcharge 20 S On 1 S GREEN</p>	<p>Black Surcharge 20 S On 1 S GREEN</p>		

Unwatermarked

1894



Unwatermarked

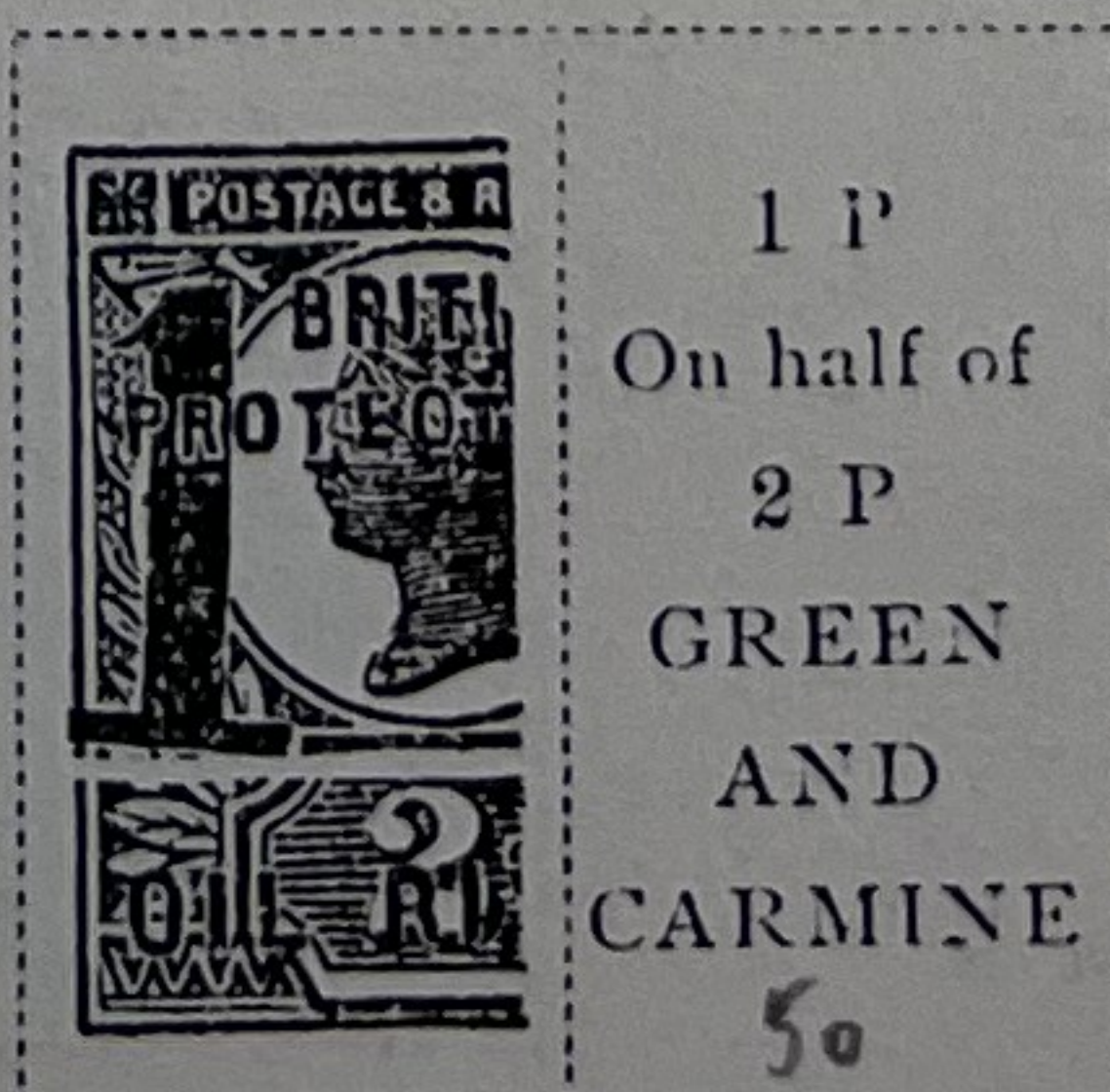
1894



Watermarked

Imperial Crown

1894



160-


49
S
425.-

785.-

NIGER COAST PROTECTORATE

Unwatermarked
1894

Blue
Surcharge
Like cut
 $\frac{1}{2}$ P
On half of
1 P
Vermilion
51



Violet
Surcharge
 $\frac{1}{2}$ P
On half of
1 P
Vermilion
52

Black
Surcharge
 $\frac{1}{2}$ P
On half of
1 P
Vermilion
53



750.-

Watermarked Crown and C. A.
1897-1900



289.25

REGISTRATION ENVELOPE.

ISSUED 1892.

BRITISH PROTECTORATE
OIL RIVERS



3.20

F

1042.50

NIGER COAST PROTECTORATE

1892

~~UNION POSTALE UNIVERSELLE~~

~~POST CARD - GREAT BRITAIN & IRELAND~~

BRITISH PROTECTORATE

~~(GRANDE BRETAGNE ET IRLANDE)~~

OIL RIVERS

THE ADDRESS ONLY TO BE WRITTEN ON THIS SIDE.

PAID
LIVERPOOL
PACKET
SP 92
S-B

BONNY RIVER
JUL 4
1892



*Res. Thomas. Esq
24. Prospect Vale
Fairfield
Near Liverpool
England.*

