

# TRANSVAAL

(Formerly South African Republic)



GOVERNMENT—British province, formerly republic, now part of the Union of South Africa. CAPITAL—Pretoria.  
 COINAGE—Same as in Great Britain.

ISSUES OF FIRST REPUBLIC  
 Printed by Adolph Otto, Gustrow  
 Unwatermarked

1869

	Thin Paper Imperforate 6 P ULTRAMARINE 2	1 S DARK GREEN 3			
--	--	------------------------	--	--	--

1871-74

--	--

Printed by Mr. J. Vigneron

1870

	6 P ULTRAMARINE 14		Same Rouletted 1 P CARMINE 11		
--	--------------------------	--	---	--	--

930



# TRANSVAAL

Printed by J. P. Borrius, Potchefstroom

Unwatermarked

1870-72



6 P  
INDIGO



Printed by J. P. Borrius, Potchefstroom

1870-72

Printed by P. Davis and Son, Natal

1874



(THICK)  
Same  
Thin Soft Paper  
Rouletted  
1 P  
DULL ROSE

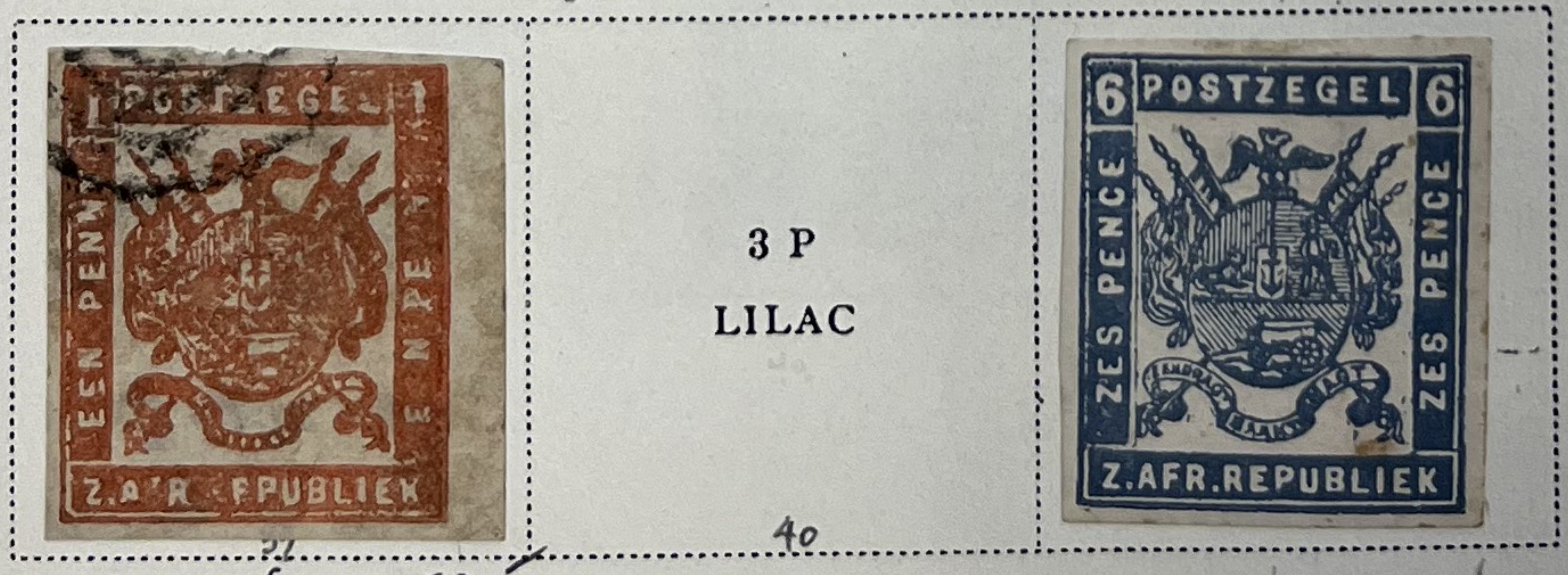


Printed by the Stamp Commission, Pretoria

1875-77



3 P  
DULL VIOLET



3 P  
LILAC



Same  
Rouletted  
1 P  
ORANGE RED



6 P  
DEEP BLUE

Same  
Rouletted  
1 P  
ORANGE RED

1 S  
YELLOW GREEN

1397.50



# TRANSVAAL

ISSUED UNDER FIRST BRITISH OCCUPATION

Unwatermarked

1877

Red Surcharge  
Like next cut  
Pelure Paper  
Imperforate  
3 P  
LILAC  
50

V. R.  
51  
TRANSVAAL  
Rouletted  
3 P  
LILAC

Same  
Thin Hard Paper  
Imperforate  
3 P  
LILAC  
52

Same  
Soft Porous Paper  
Imperforate  
6 P  
BLUE  
53

1 S  
YELLOW GREEN  
54

Same  
Rouletted  
6 P  
BLUE  
55

1 S  
YELLOW GREEN  
56

Same  
Black Surcharge  
Pelure Paper  
Imperforate  
1 P  
RED  
57

Same  
Rouletted  
1 P  
RED  
58



Same  
Rouletted  
1 P  
RED  
60



Same  
Rouletted  
1 P  
LIGHT RED  
66



562.50



# TRANSVAAL

Unwatermarked

1877-79



42.50



5 20.



5 20.



10.-



15 50.-



40.-



50.-



55.-



5 40.-

3 P  
LILAC  
ON GREEN  
80



40.-

6 P  
BLUE  
ON BLUE  
81

1877-79



83 52.50



40.-



40.-



50.-

Same  
Rouletted  
1 P  
RED  
ON ORANGE  
87

3 P  
LILAC  
ON BUFF  
88

3 P  
LILAC  
ON GREEN  
89

6 P  
BLUE  
ON BLUE  
90

1879



91



92



93

130.-

Same  
Rouletted  
1 P  
RED  
ON YELLOW  
94

3 P  
LILAC  
ON GREEN  
95

3 P  
LILAC  
ON BLUE  
96



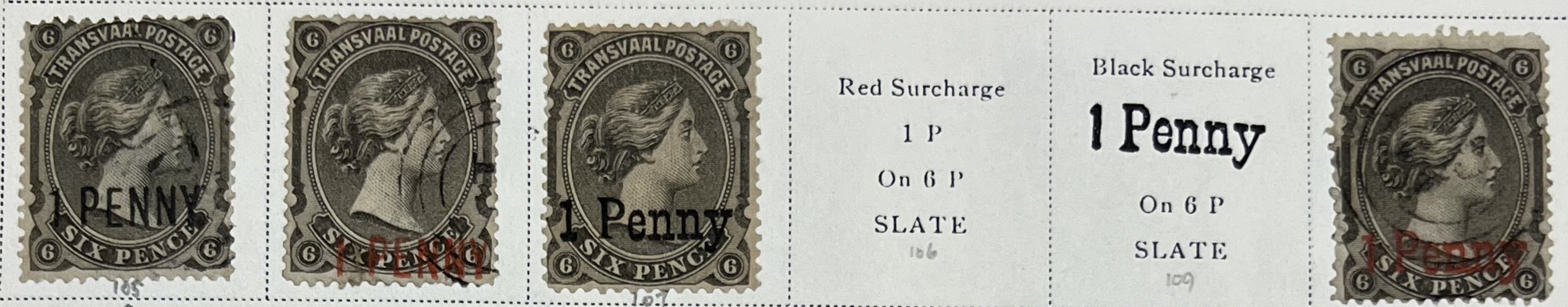
# TRANSVAAL

Unwatermarked

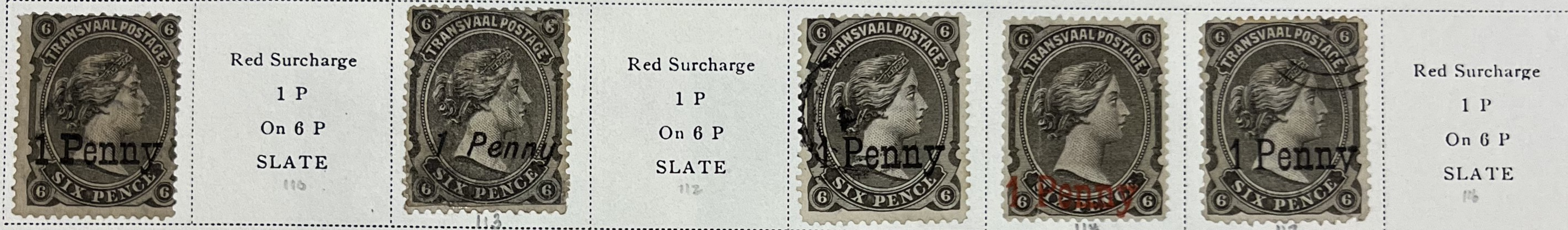
1878-80



1879



233.75



## ISSUES OF THE SECOND REPUBLIC

1882



1827.50

1883



35.1

1885-93



est. 350.1



# TRANSVAAL

Unwatermarked

1885



1885



1887



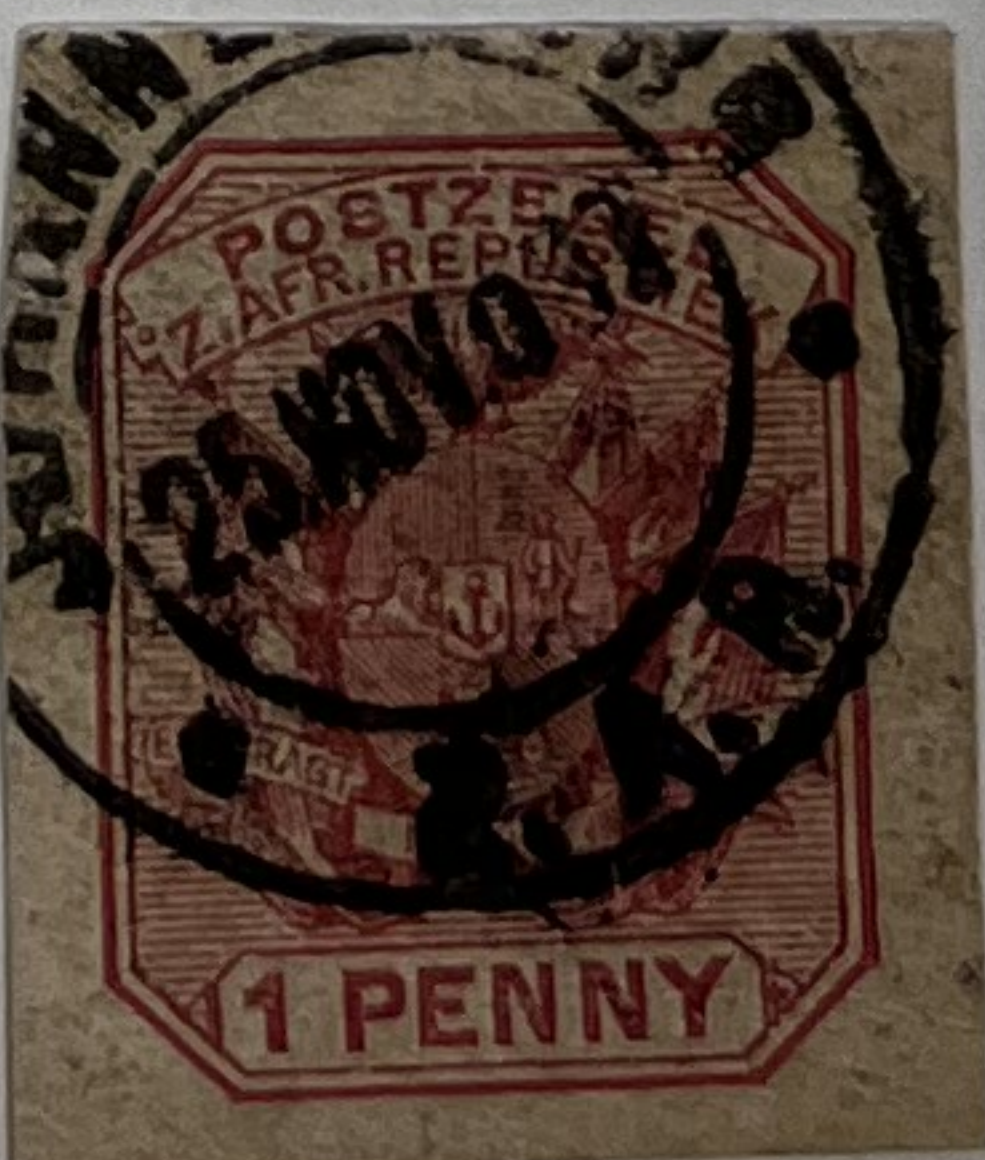
1893



1894-95



1895-96



80-

143.75

23.50

38-

117-



# TRANSVAAL

Unwatermarked

1895



1896



ISSUED UNDER SECOND BRITISH OCCUPATION

1900





# TRANSVAAL

Issued in Lydenburg

Unwatermarked

1900

Regular Issue of 1895 Surcharged <b>V.R.I.</b> <sup>214</sup> ½ P BREEN	1 P ROSE AND GREEN	2 P BROWN AND GREEN	2½ P ULTRAMARINE AND GREEN	4 P OLIVE AND GREEN	6 P VIOLET AND GREEN	1 S BISTRE AND GREEN
---	--------------------------	---------------------------	----------------------------------	---------------------------	----------------------------	----------------------------



Commemorative Stamp  
of 1895  
Surcharged

"V. R. I.

1 d"

On 1 P

DULL ROSE

175

Issued in Rustenburg

1900

Like cut ½ P GREEN <sup>223</sup>	 <sup>224</sup>	2 P BROWN AND GREEN	 <sup>226</sup>	3 P RED VIOLET AND GREEN	4 P OLIVE AND GREEN	6 P VIOLET AND GREEN
--	--------------------	---------------------------	--------------------	--------------------------------	---------------------------	----------------------------

425

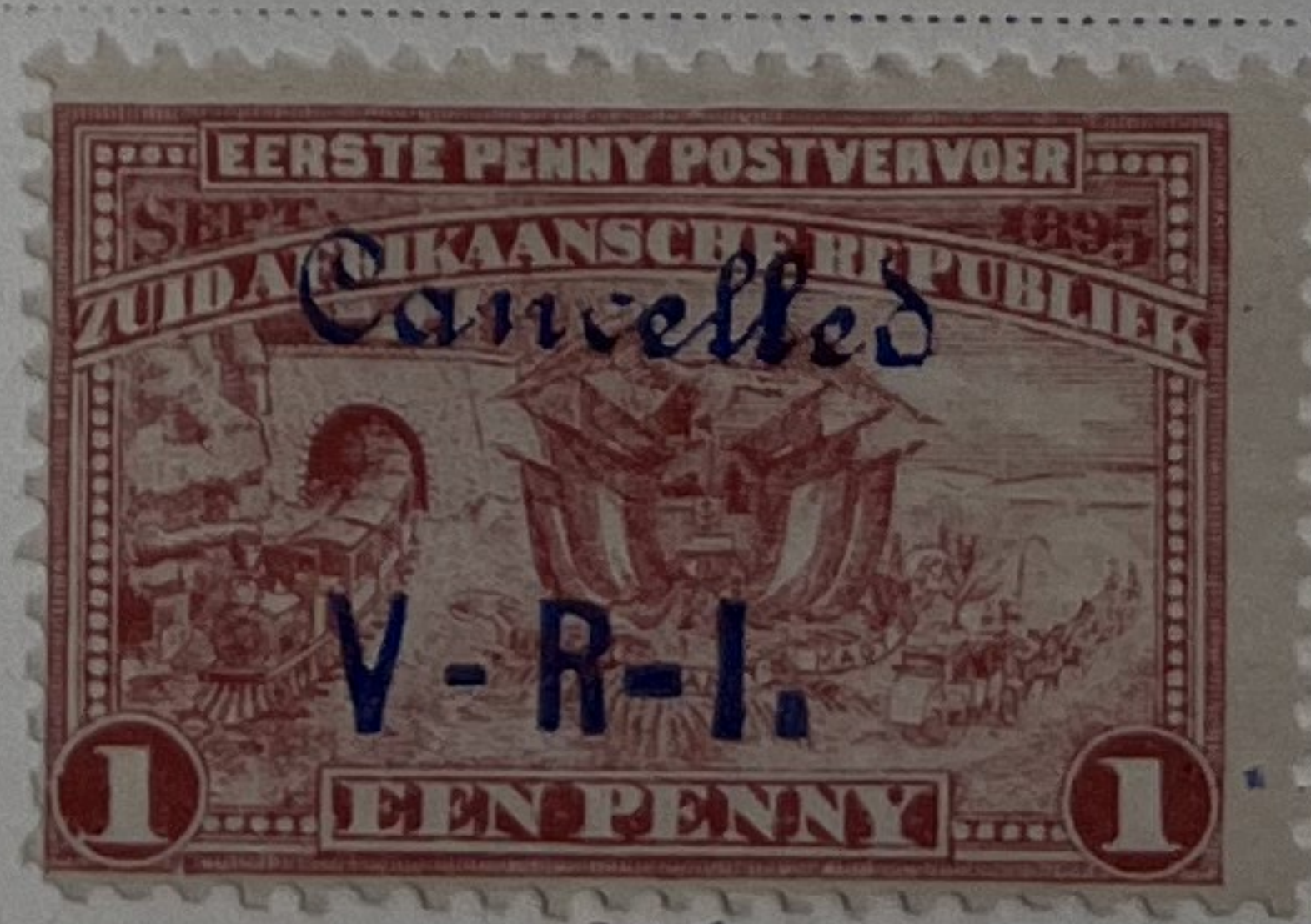
1 S BISTRE AND GREEN	2 S 6 P HELIOTROPE AND GREEN
----------------------------	------------------------------------

Issued in Wolmaranstad

1900

Like cut ½ P GREEN <sup>237</sup>	 <sup>238</sup>	2 P BROWN AND GREEN	2½ P ULTRAMARINE AND GREEN	3 P RED VIOLET AND GREEN	4 P OLIVE AND GREEN
--	--------------------	---------------------------	----------------------------------	--------------------------------	---------------------------

6 P VIOLET AND GREEN	1 S BISTRE AND GREEN
----------------------------	----------------------------



245

260

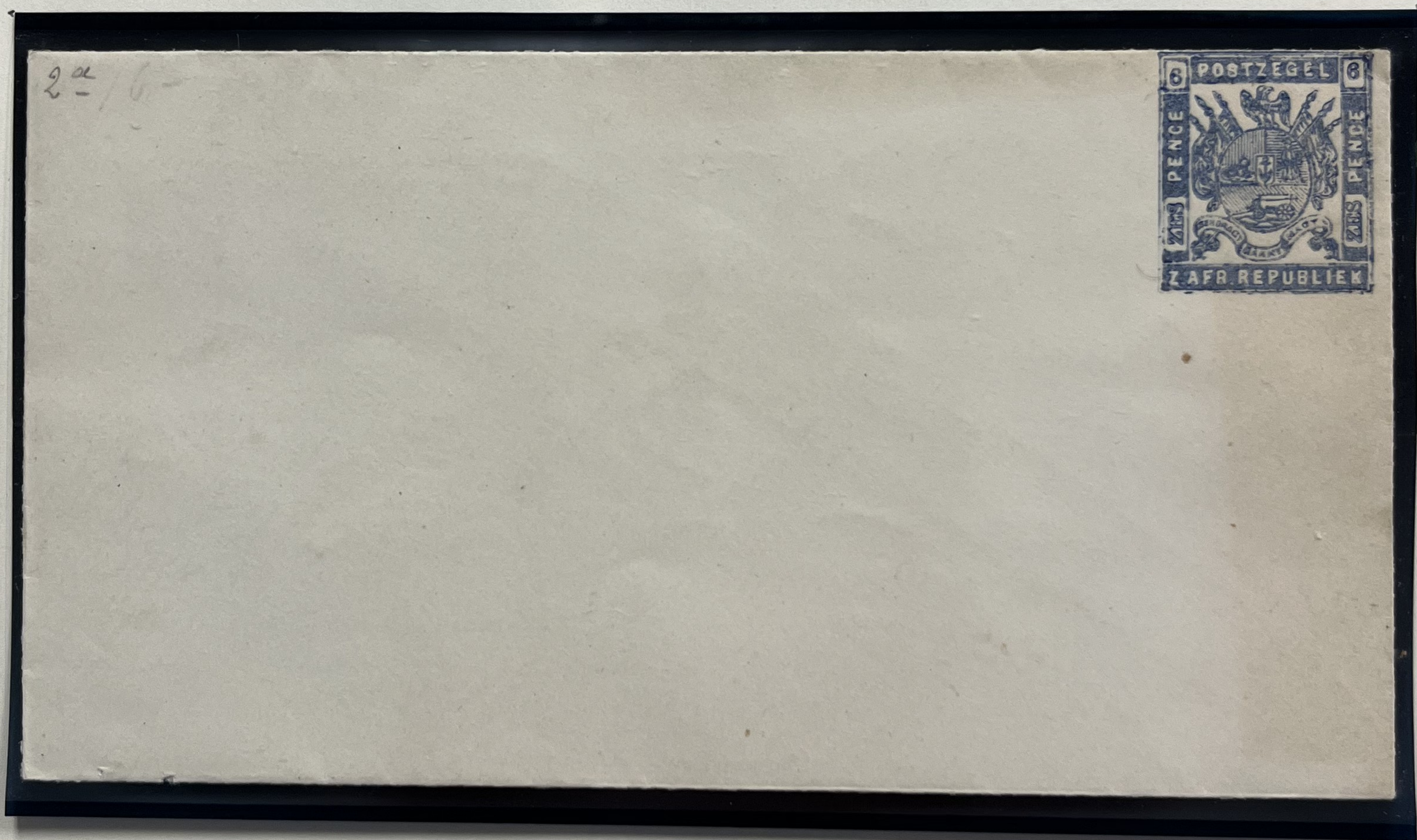


# TRANSVAAL

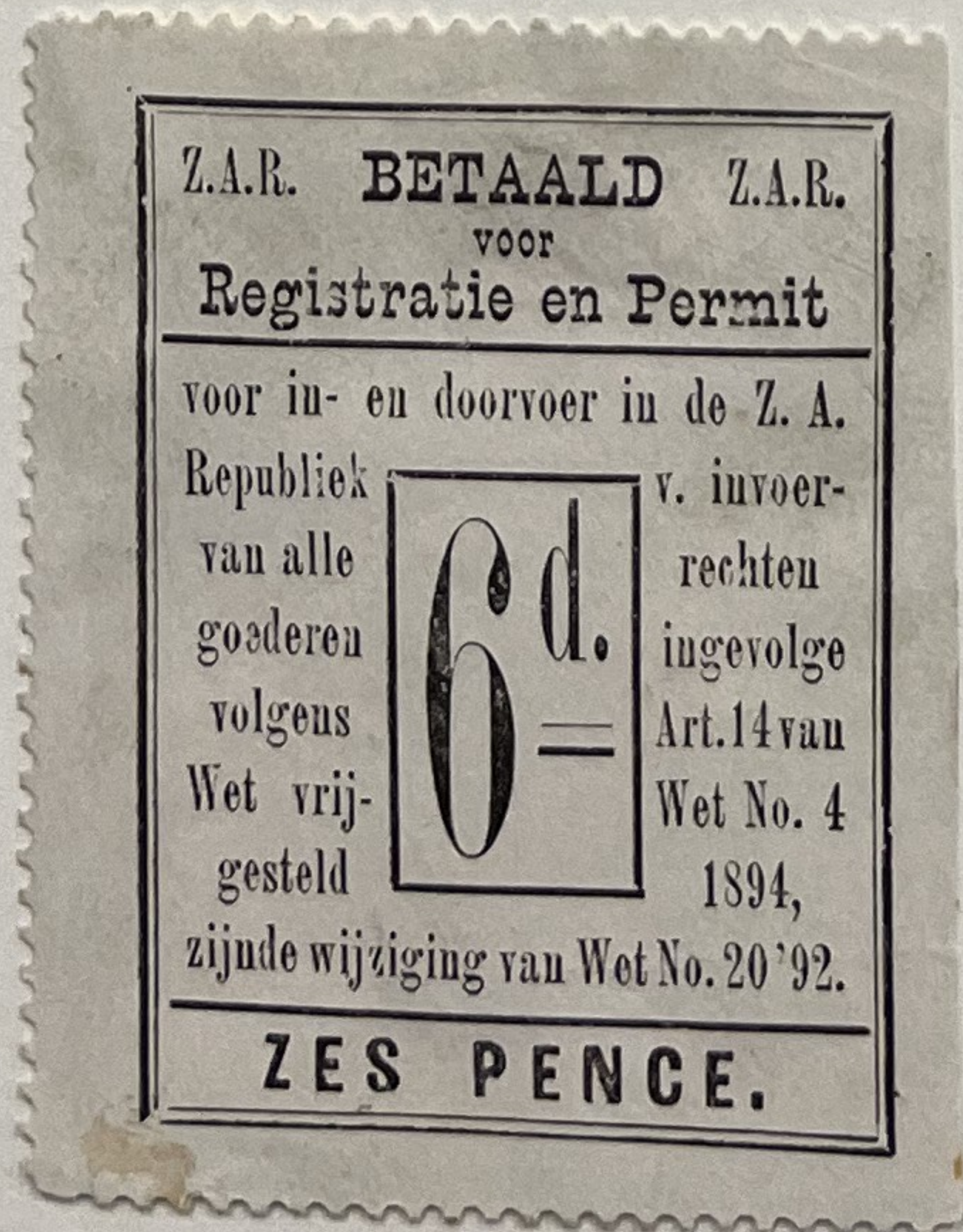
(Formerly South African Republic)

ENVELOPES.

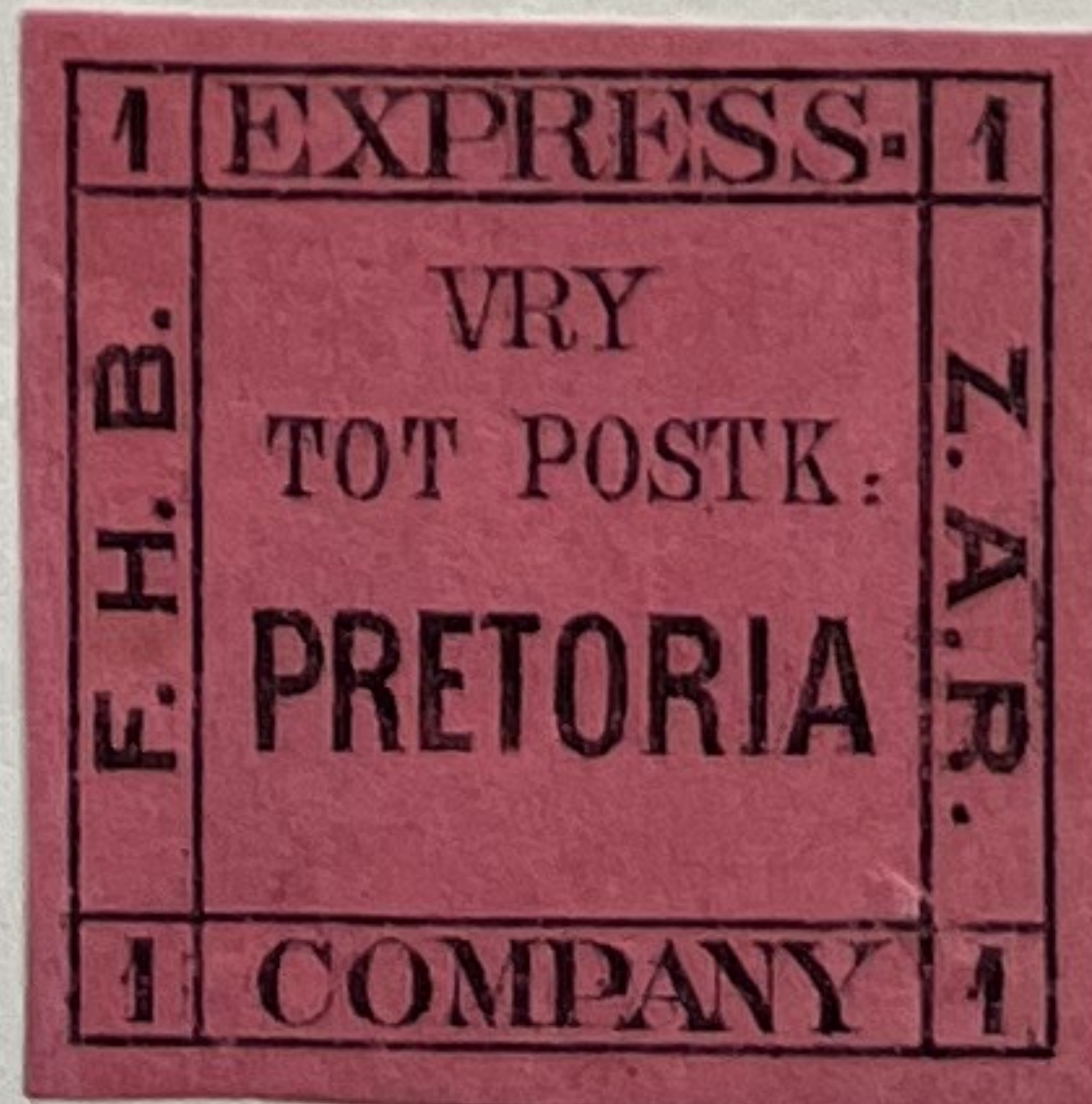
ISSUED 1872-73.



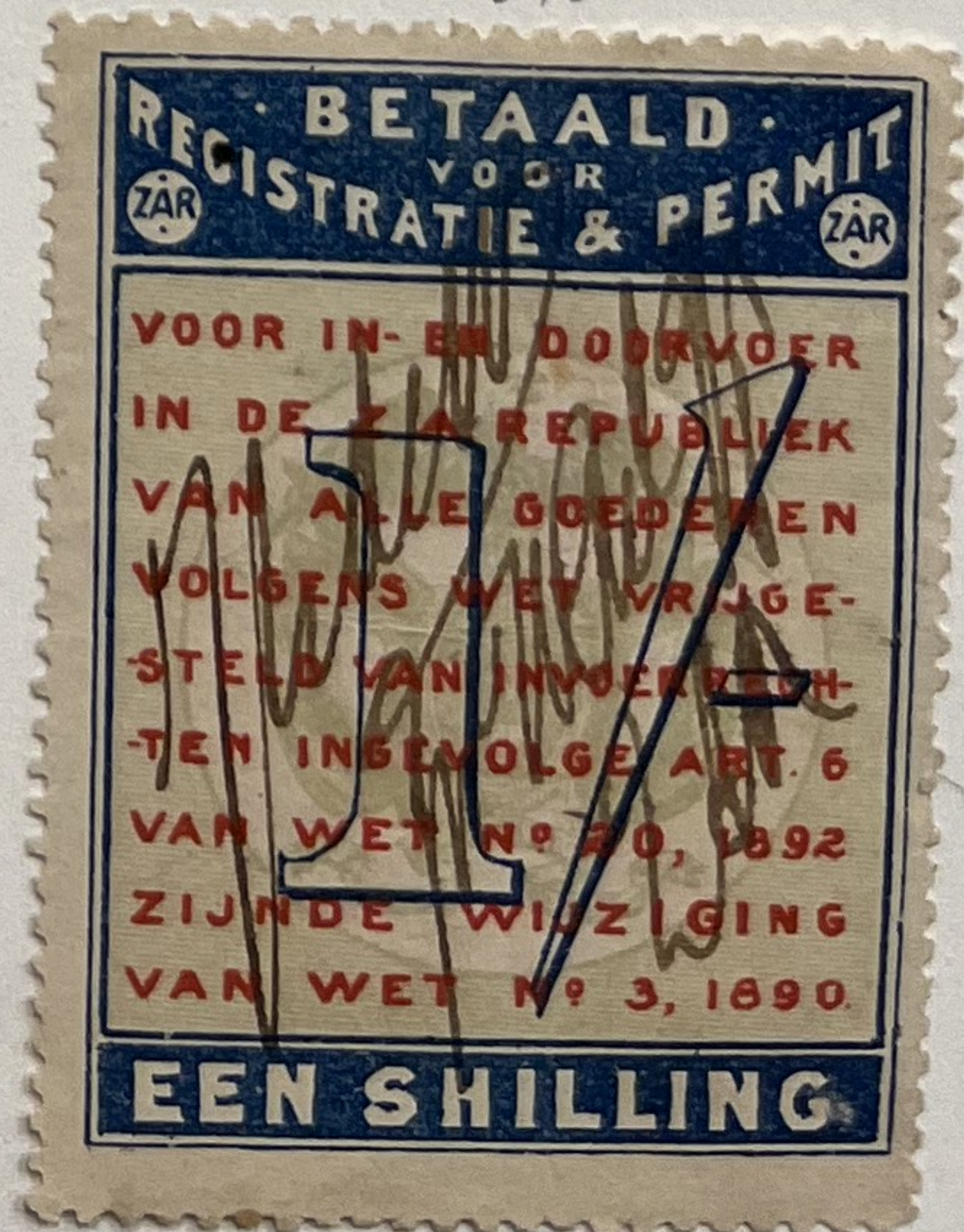
1894



LOCAL  
1887  
P. H. BAKKER



1890



107.  
107.



# TRANSVAAL

1882

