

NOSSI BE

GOVERNMENT—A French colony since 1841. Until 1896 was administrated by a subordinate of the governor of Mayotte when it was placed under the administration of Madagascar. CHIEF TOWN—Hellville.
 COINAGE—100 centimes=1 franc (French).

Unwatermarked
1889



1890



1893





THE PHILATELIC FOUNDATION

270 MADISON AVENUE
NEW YORK, N.Y. 10016

EXPERT COMMITTEE

No. 0173365
11/24/87

We have examined the enclosed item submitted by the applicant described as follows:

Country: MADAGASCAR

<u>Cat. No.</u>	<u>Issue</u>	<u>Denom</u>	<u>Color</u>
6	1891	5¢	on 10¢, Lavender

Scott's unless otherwise specified.

UNUSED OG

OF WHICH A PHOTOGRAPH IS ATTACHED AND
ARE OF THE OPINION THAT:

IT IS GENUINE PREVIOUSLY HINGED* * * * *



PLEASE TURN OVER

[Signature]
For The Expert Committee
VICE Chairman

A 30631

submitted by J. & H. STOLOW, INC.

MADAGASCAR

(French)

GOVERNMENT—French colony, comprising the island of Madagascar which, after New Guinea and Borneo, is the largest in the world.
CAPITAL—Antananarivo.
COINAGE—100 centimes=1 franc.

Unwatermarked

1889



1891



1895



MADAGASCAR

Unwatermarked

1895

Stamps of France, 1876-84, Surcharged with New Values

Manuscript Surcharge in Red 0,15 C On 25 C BLACK ON ROSE	0,15 C On 1 F BRONZE GREEN ON STRAW	Handstamped Surcharge in Black 15 C On 25 C BLACK ON ROSE	15 C On 1 F BRONZE GREEN ON STRAW
----------------------------------------------------------------------------	-------------------------------------------------	-----------------------------------------------------------------------------	-----------------------------------------------

1896

	15 C On 2 C BROWN ON BUFF		25 C On 40 C RED ON STRAW
------------------------------------------------------------------------------------	------------------------------------	-------------------------------------------------------------------------------------	------------------------------------

Handwritten: 25c

1896-99



1900



Handwritten: 285.50

MADAGASCAR

(French)

Unwatermarked

1901



1906



a.

1902



0,10
On 50 C
CARMINE
ON ROSE
57



0,10
On 50 C
CARMINE
ON ROSE
62

1903



231.50

1903



415.

655.70

MADAGASCAR

Unwatermarked

1908-17



1912



42

23.10

10

MADAGASCAR

Unwatermarked

1921



Stamp of 1903
Surcharged

1 F
On 5 F

BLACK

Et.



Red Surcharge
25 C
On 35 C
RED
AND BLACK



90.

1922



1922

1924

1925



98

MADAGASCAR

Unwatermarked

1925



1926



1927



1927-28



MADAGASCAR

Unwatermarked

1928



1930



MADAGASCAR

Unwatermarked

1931



1932



1933



1903

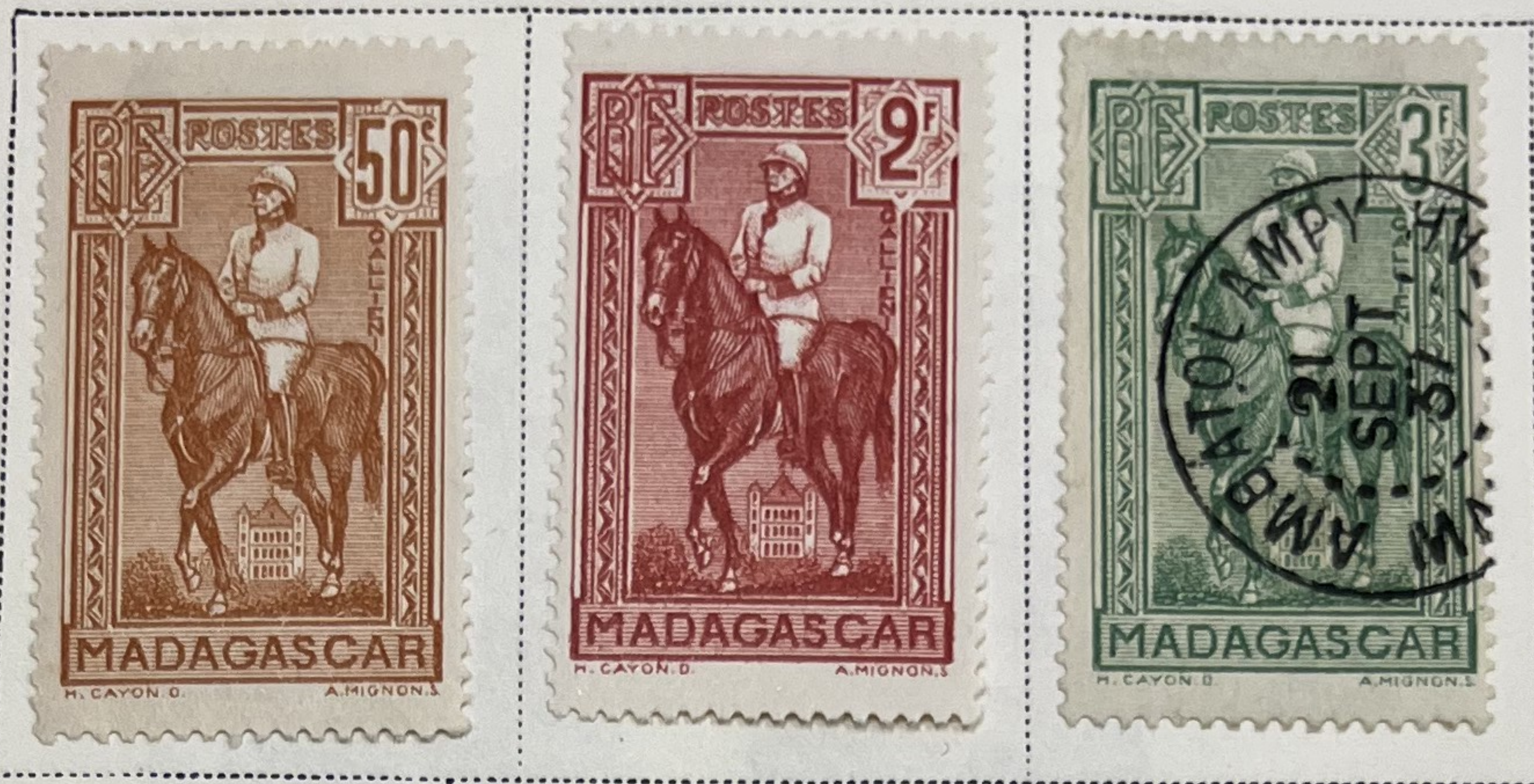


21.50

MADAGASCAR

Unwatermarked

1936



1937



MADAGASCAR

Unwatermarked

1938



1939-40



10.20

1939



2.10

MADAGASCAR

Paris International Exposition Issue

1937

EXPOSITION INTERNATIONALE

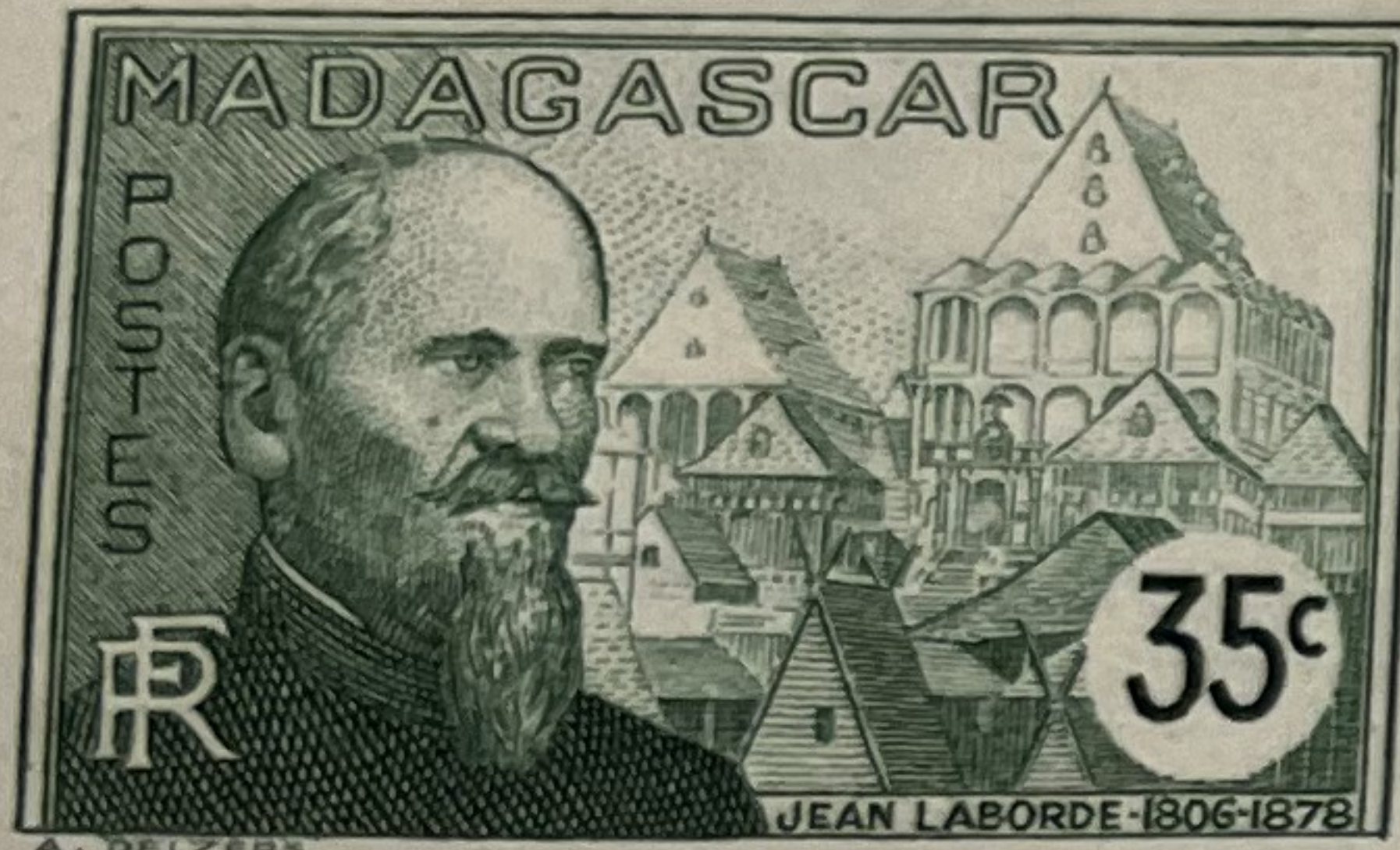


ARTS ET TECHNIQUES

1937

MADAGASCAR

1938-40



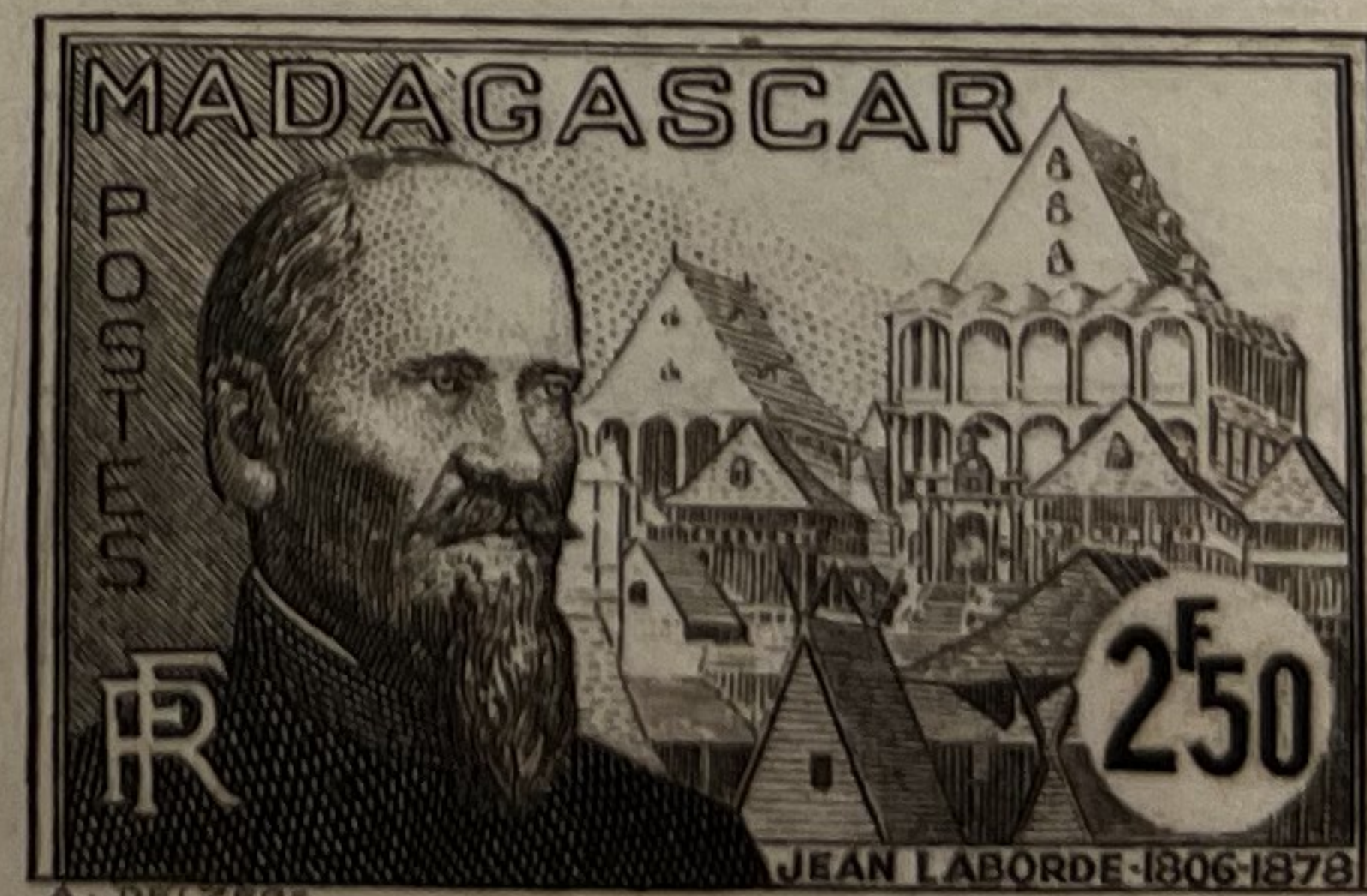
1.25 F
ROSE CARMINE

20



2.25 F
DARK ULTRAMARINE

206



MADAGASCAR

SEMI-POSTAL STAMPS

Unwatermarked

1915



MADAGASCAR

SEMI-POSTAL STAMPS
Unwatermarked

1938



1939



MADAGASCAR

AIR POST STAMPS

Unwatermarked

1935



MADAGASCAR

AIR POST STAMPS

Unwatermarked

1938

Types of 1935

3.65 F
OLIVE BLACK
AND
RED

9



MADAGASCAR

SEMI-POSTAL AIR POST STAMP

Unwatermarked

1939



MADAGASCAR

POSTAGE DUE STAMPS

Unwatermarked

1896



231



200 Fr
(1/2)

1919

MADAGASCAR

POSTAGE DUE STAMPS

Unwatermarked

1908



MADAGASCAR

POSTAGE DUE STAMPS

Unwatermarked

1924



1927

