

THE WELLS COMPANIES
Wells, Fargo & Co

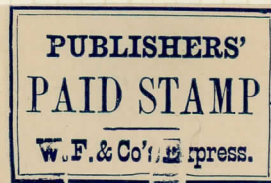
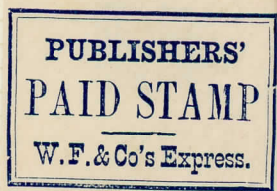
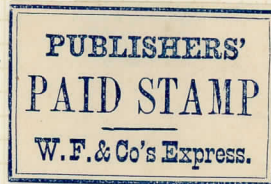
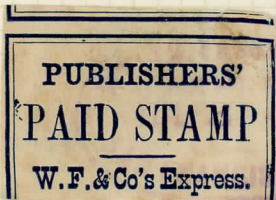
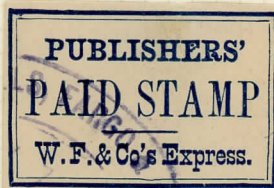
Adhesive Stamps for Publishers' Use

1876.

Scott Type L.272 . No. 143 LP.II.

Typographed . Blue on white gummed paper.

Imperf.



1894-
1901





ONE NEWSPAPER
WELLS FARGO & CO.
PAID
OVER OUR CALIFORNIA ROUTES.

ONE NEWSPAPER
WELLS FARGO & CO.
PAID
OVER OUR CALIFORNIA ROUTES.

ONE NEWSPAPER
WELLS FARGO & CO.
PAID
OVER OUR CALIFORNIA ROUTES.

ONE NEWSPAPER
WELLS FARGO & CO.
PAID
OVER OUR CALIFORNIA ROUTES.

ONE NEWSPAPER
WELLS FARGO & CO.
PAID
OVER OUR CALIFORNIA ROUTES.

ONE NEWSPAPER
WELLS FARGO & CO.
PAID
OVER OUR CALIFORNIA ROUTES.

ONE NEWSPAPER
WELLS FARGO & CO.
PAID
OVER OUR CALIFORNIA ROUTES.

ONE NEWSPAPER
WELLS FARGO & CO.
PAID
OVER OUR CALIFORNIA ROUTES.





ONE NEWSPAPER



OVER OUR CALIFORNIA ROUTES

THE WELLS COMPANIES
Wells, Fargo & Co.

Adhesive Stamps for Prepayment of Newspaper Transmission .

1883-1888 . "Over our routes in the U.S"

Type L270 .
No. 143 LP. 9

Lithographed, blue on white paper. 5 vertical rows
of 10 or more subjects. Thin colorless gum.

Perf. 11.

Type 1.



Type 2.



Type 3.



Type 4.



Type 5.



1886-1892



143 LP6



143 LP7



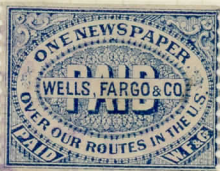
143 LP7



143 LP8



143 LP9



143 LP9



143 LP9

1878 - 1885



PUBLISHERS'
PAID STAMP
W. F. & Co's Express.



UNUSED

AND WE ARE OF THE OPINION THAT:

IT IS GENUINE, WITHOUT GUM, REPAIRED AT BOTTOM
LEFT ADDING PORTION OF THE DESIGN AND MARGINS,
AND WITH A HORIZONTAL CREASE AT TOP. * * * * *

* *



327780

18363