



# ANJOUAN

Unwatermarked

1892



6.00



1

2

3

4

5

4.30

7.95

9.50

12.50

19.50



30 C  
BROWN  
ON BISTRE



ON ORANGE

1 F  
BRONZE  
GREEN  
ON STRAW  
19

32.00

1900-07

49.50

82.50

10.50

Same  
10 C  
RED



BLACK ON  
GRAY GREEN

50 C  
BROWN  
ON AZURE

13

1912



20

21

22

23



24

25



30

4.00

3.25/3.25

23.10





# GRAND COMORO ISLANDS

Unwatermarked

1897-1907

					10 C RED
---	---	---	---	---	-------------

	15 C BLUE	15 C GRAY ON LIGHT GRAY		25 C BLACK ON ROSE
---	--------------	-------------------------------	---	--------------------------

		BLACK ON YELLOW		45 C BLACK ON GRAY GREEN
--	--	--------------------	--	--------------------------------

50 C BROWN ON BLUISH			
----------------------------	--	---	---

1912



302



20100

# DIEGO SUAREZ

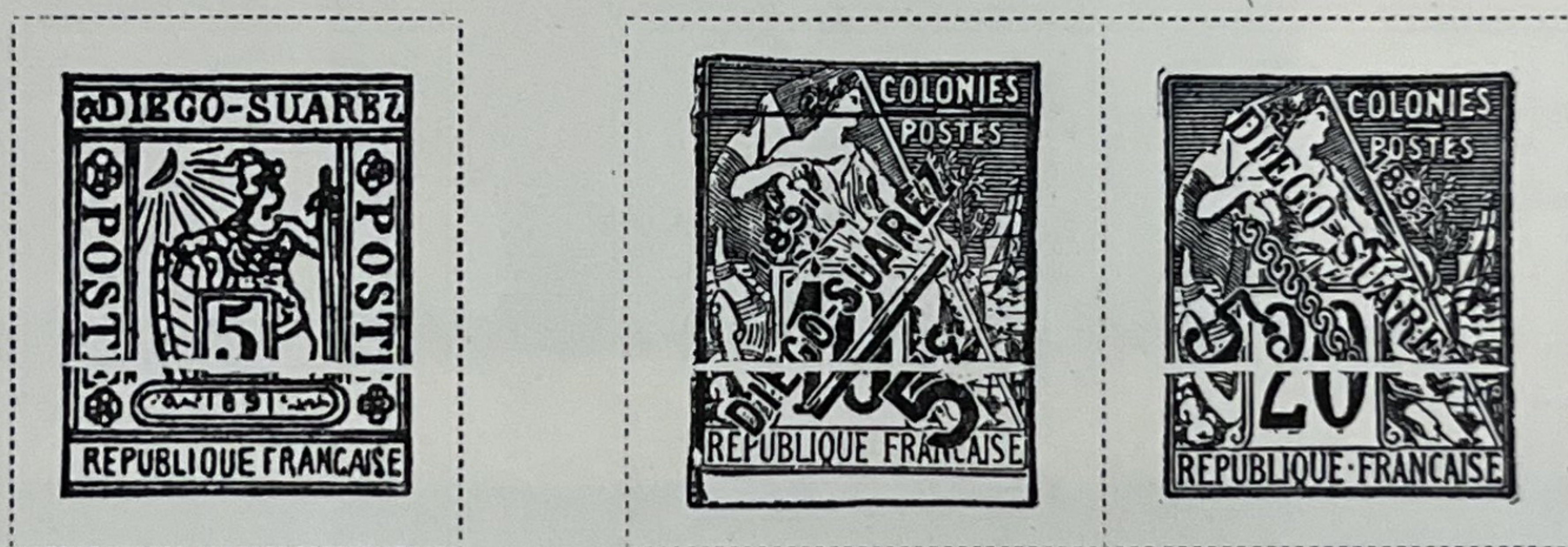
Unwatermarked  
1890

<p>Like next cut 15 C On 1 C BLACK ON BLUE</p>	<p>15 C On 5 C GREEN ON GREENISH</p>	<p>15 C On 10 C BLACK ON LAVENDER</p>		
--	--	---	---	---



1891


1892



1892

<p>Like next cut 1 C BLACK ON BLUE</p>		<p>4 C CLARET ON LAVENDER</p>		
--	---	---------------------------------------	---	---

	<p>20 C RED ON GREEN</p>		<p>30 C BROWN ON BISTRE</p>
---	----------------------------------	---	-------------------------------------

<p>35 C BLACK ON YELLOW</p>	<p>75 C CARMINE ON ROSE</p>	
-------------------------------------	-------------------------------------	---



# DIEGO SUAREZ

Unwatermarked

1892



1894





# NOSSI BE

Unwatermarked

1889



	Perforated 5 C On 20 C RED ON GREEN		5 C On 20 C RED ON GREEN			25 C On 40 C VERMILION ON STRAW
--	---	--	-----------------------------------	--	--	--

1890

	25 C On 75 C CARMINE ON ROSE	25 C On 1 F BRONZE GREEN ON STRAW	
--	---------------------------------------	---	--

25 C On 75 C CARMINE ON ROSE	25 C On 1 F BRONZE GREEN ON STRAW		25 C On 75 C CARMINE ON ROSE	25 C On 1 F BRONZE GREEN ON STRAW	
---------------------------------------	---	--	---------------------------------------	---	--

1893



	Vermilion Overprint 10 C BLACK ON LAVENDER 28			
--	--	--	--	--





2014

# NOSSI BE

Unwatermarked

1894



15 C  
BLUE

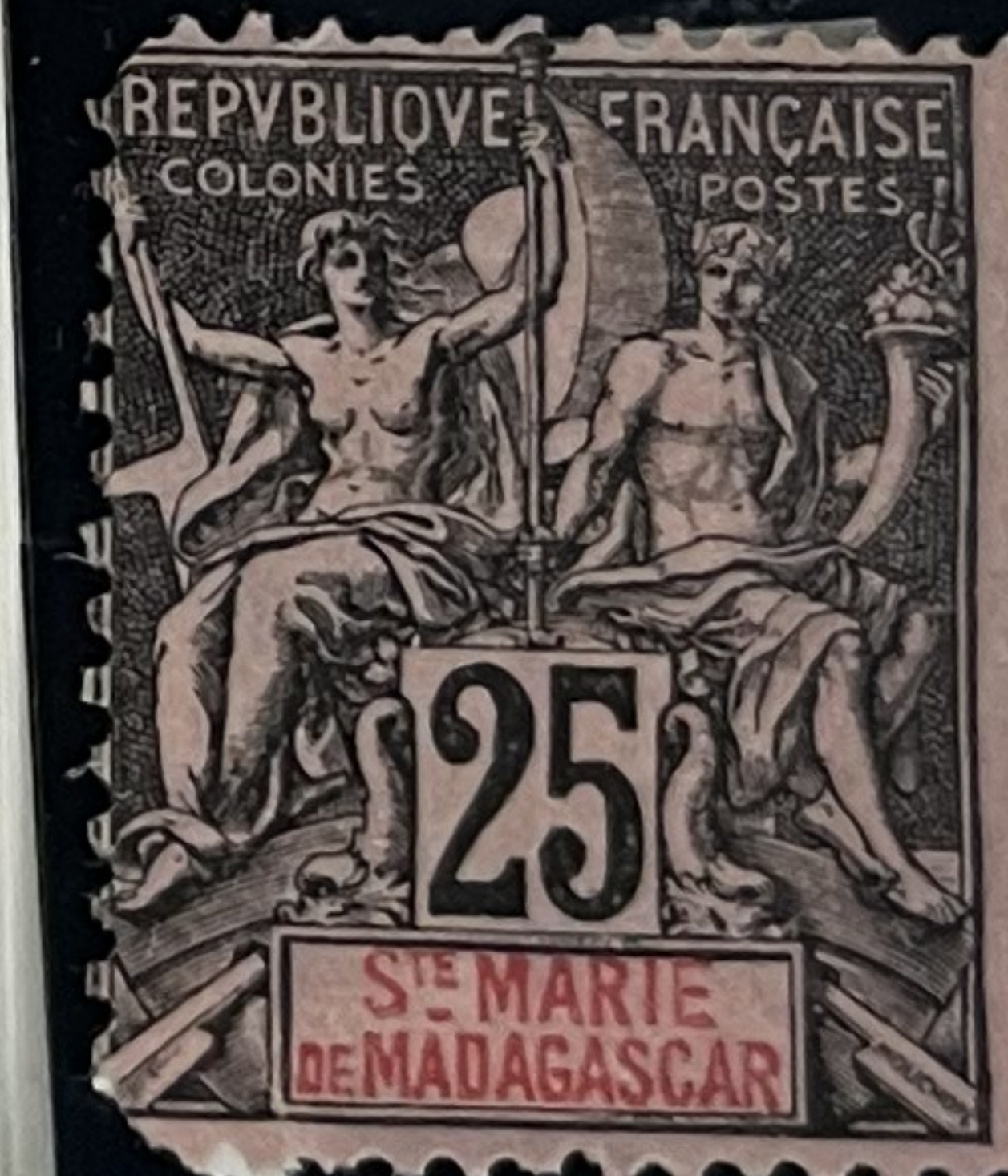
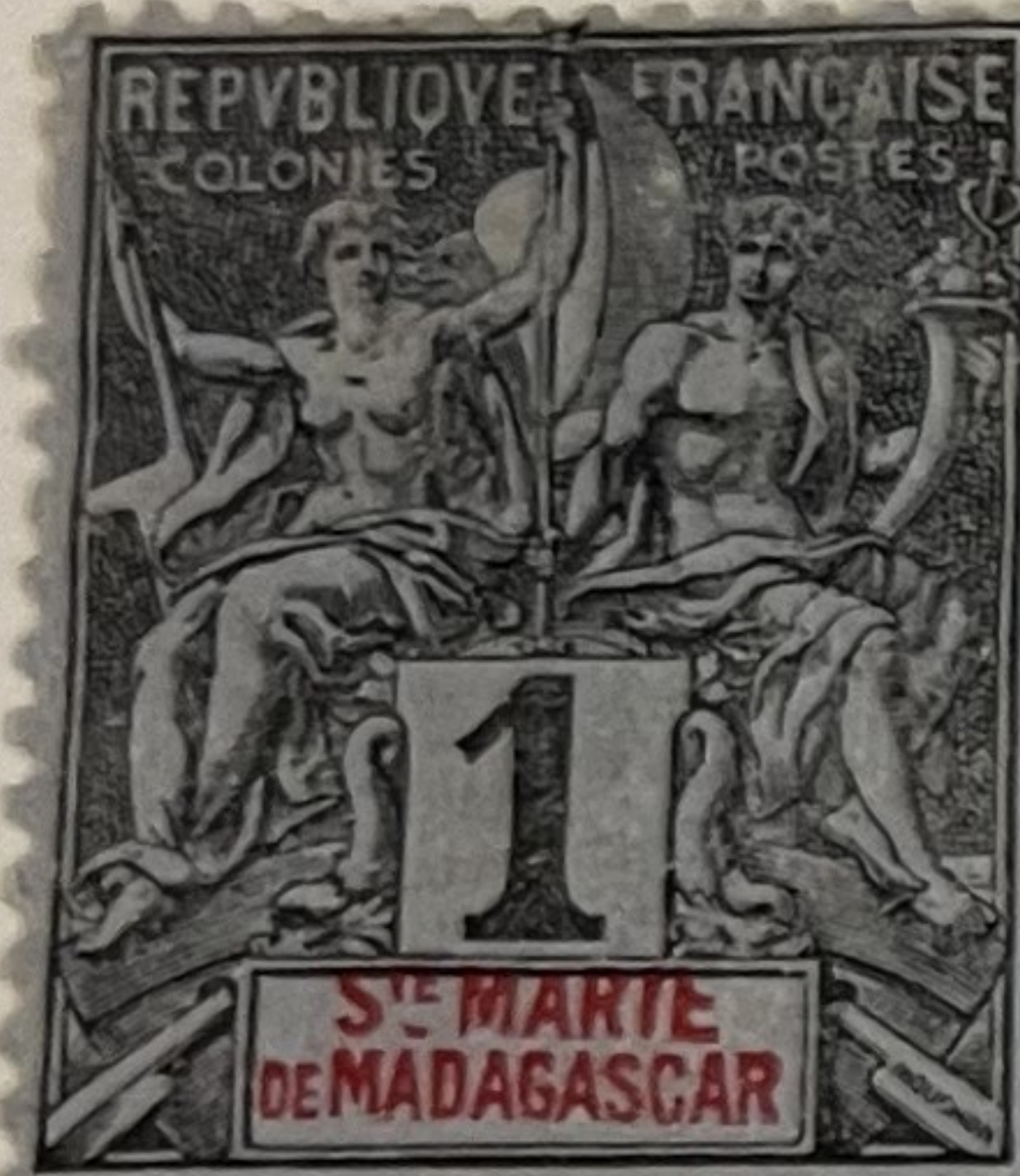


STRAIGHT ACROSS



# ST. MARIE DE MADAGASCAR

1894





(20140)

# MAYOTTE

Unwatermarked

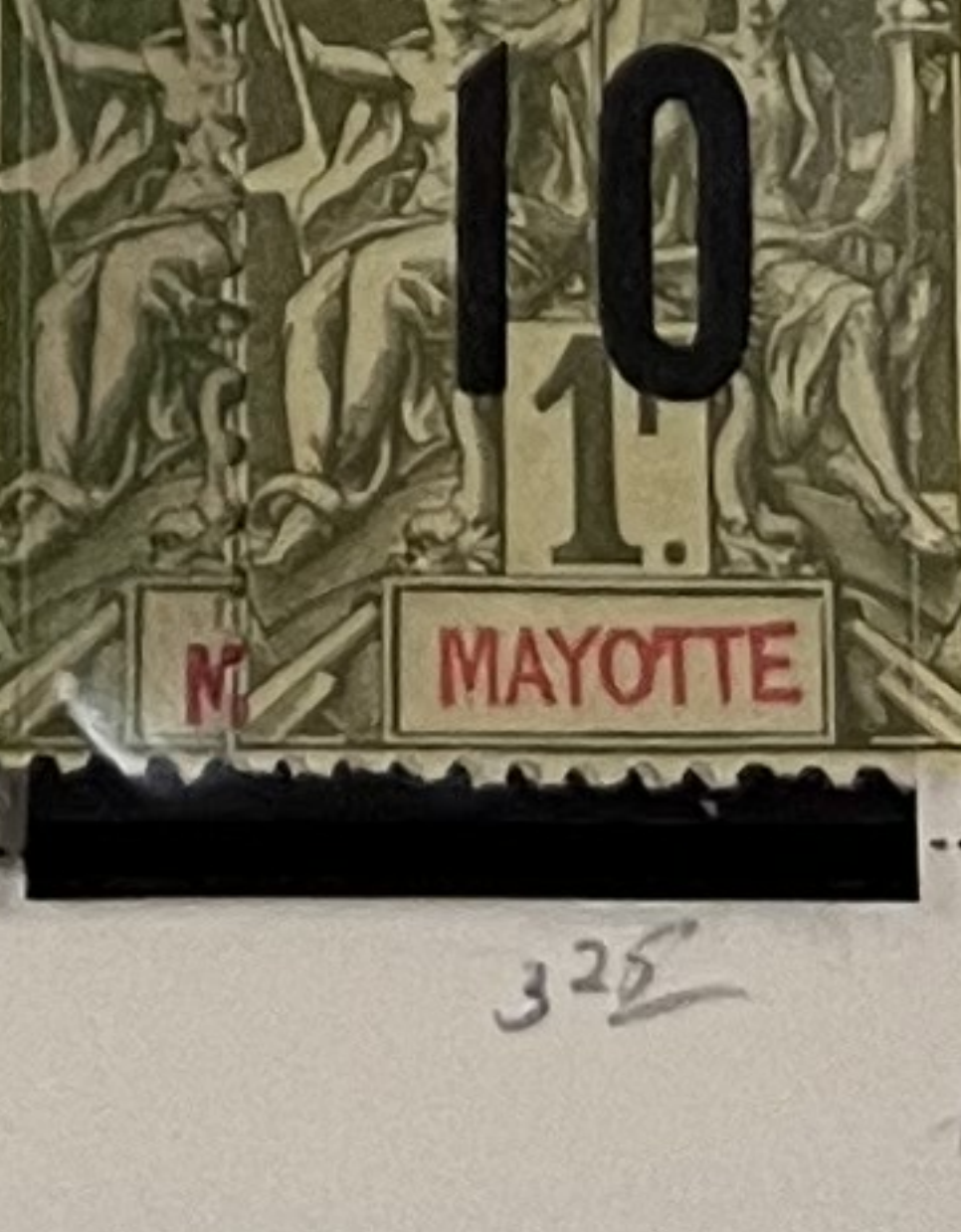
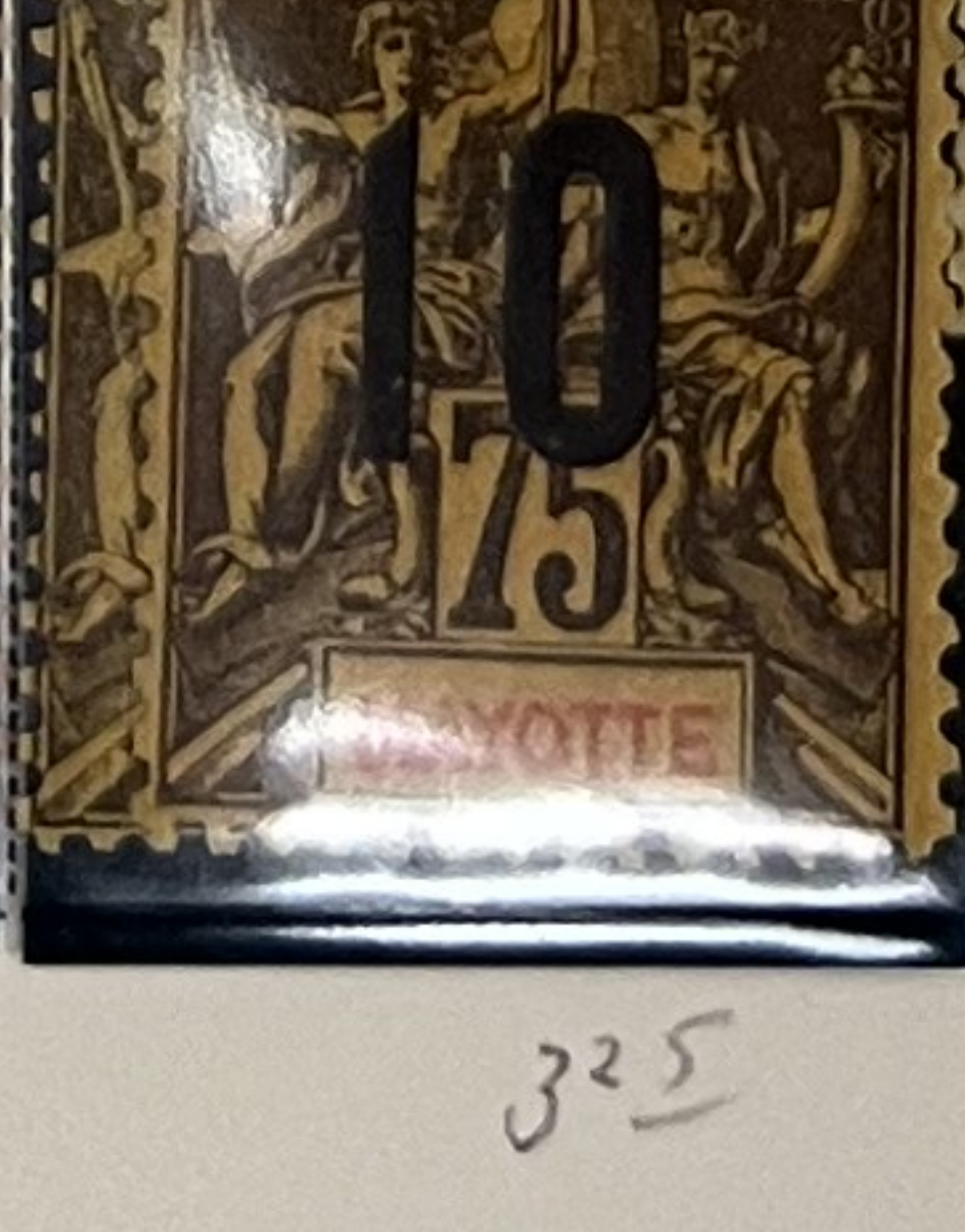
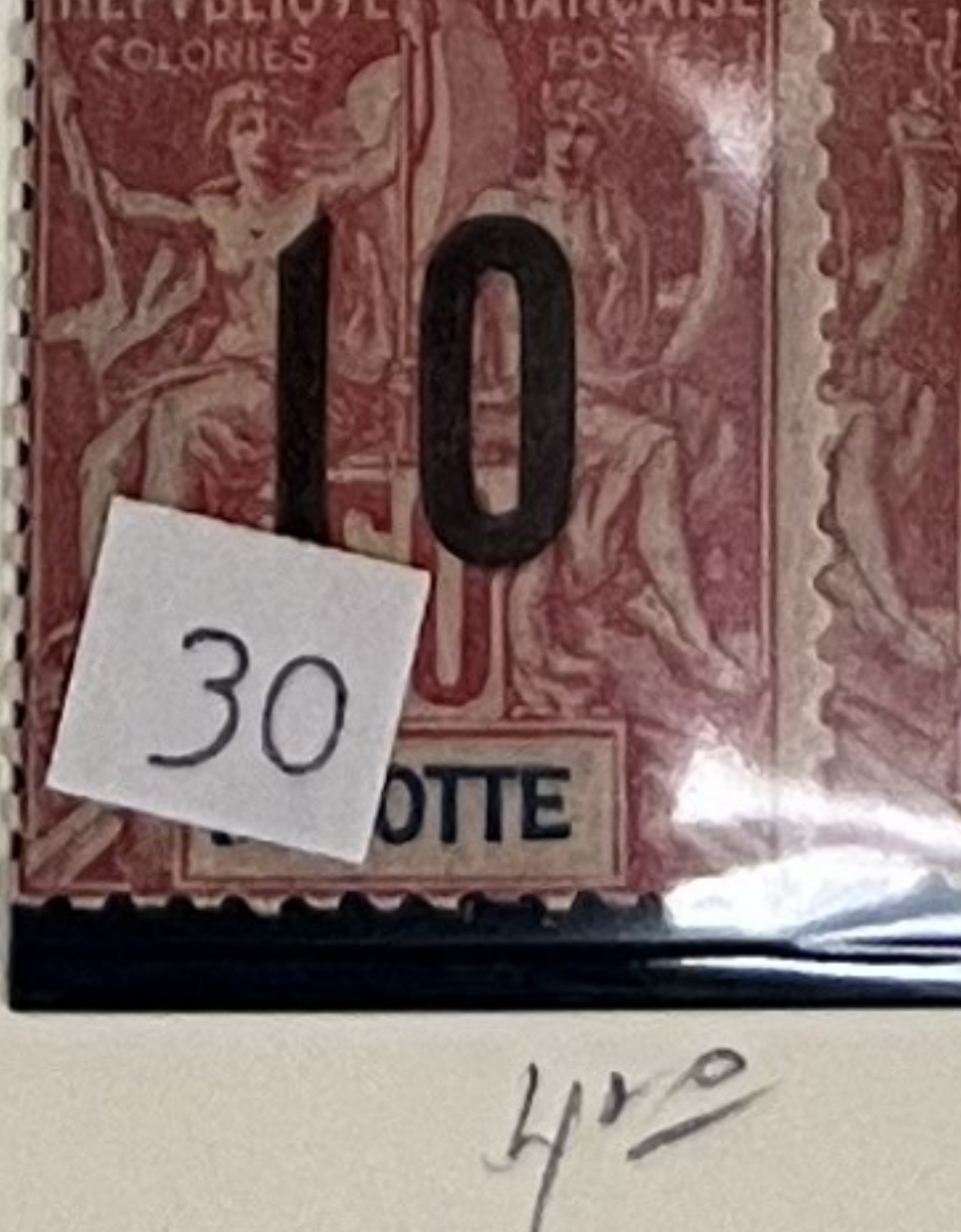
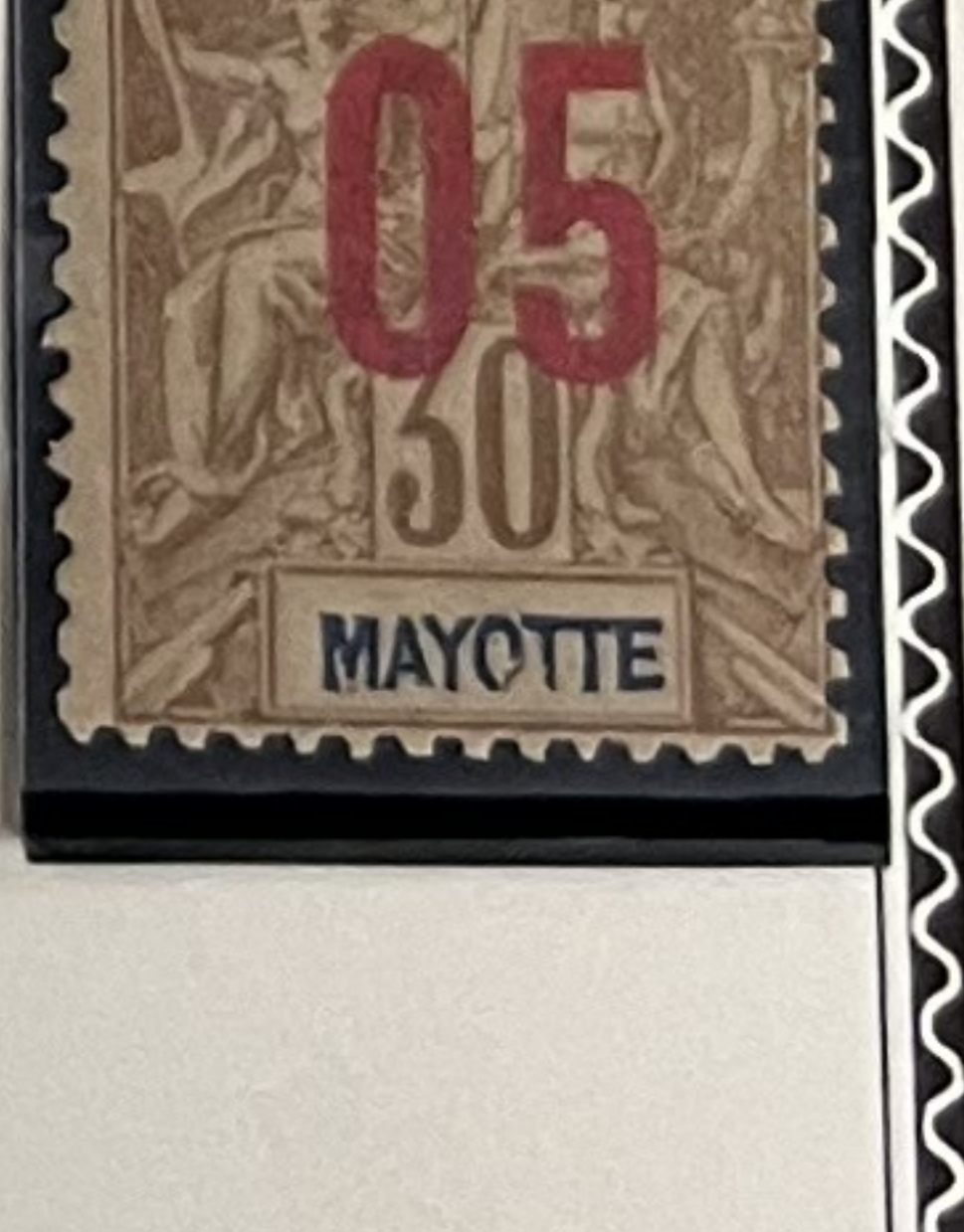
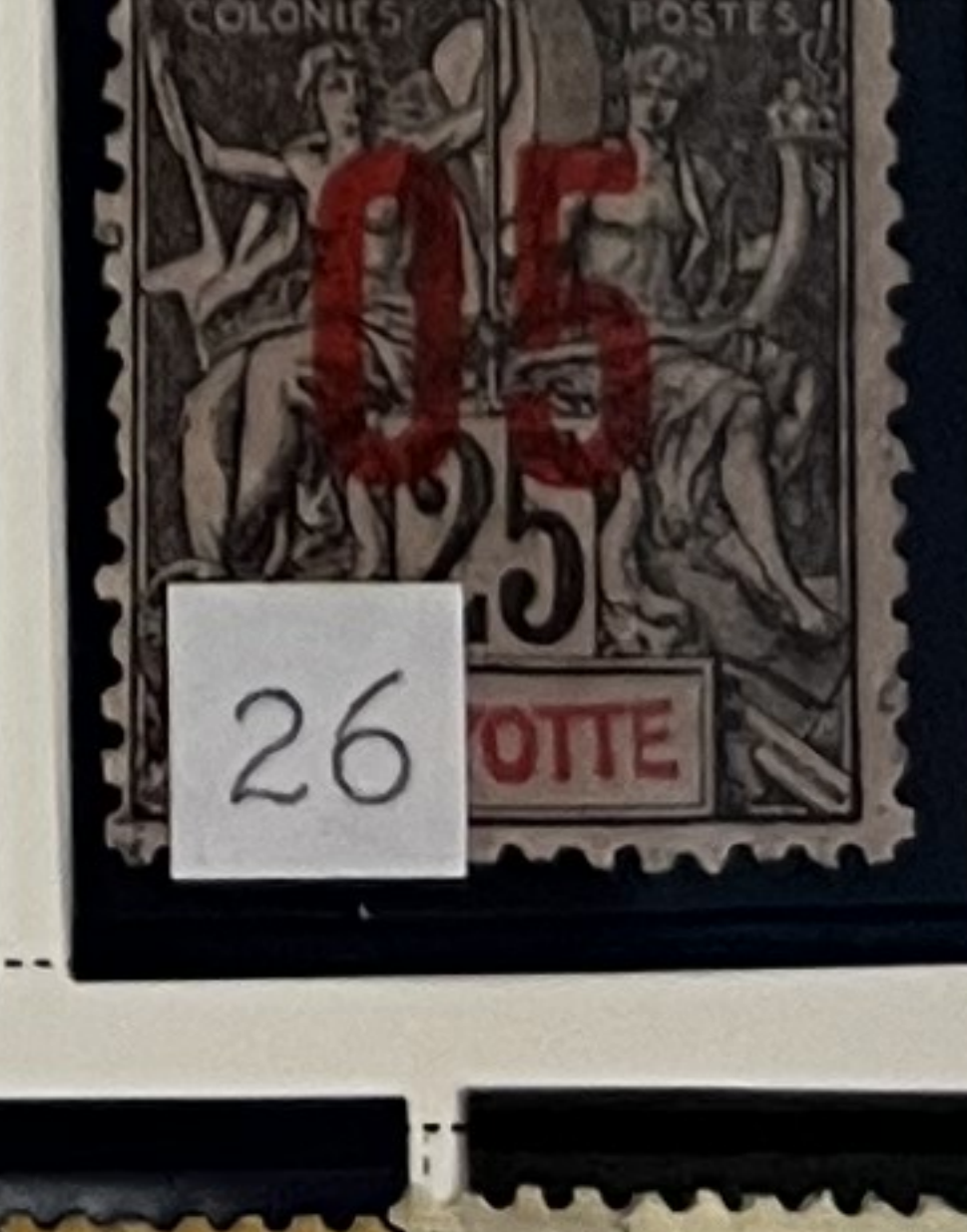
1892-1907



50 C  
BROWN  
ON AZURE



1912



361