



# The Philatelic Foundation

70 West 40th Street • 15th Floor  
New York, NY 10018

EXPERT COMMITTEE

No. 437527

06/23/2006

We have examined the enclosed item, of which a photograph is attached, and *described by the applicant* as follows:

Country: UNITED STATES OF AMERICA

<u>Cat. No.</u>	<u>Issue</u>	<u>Denom.</u>	<u>Color</u>
443	1914	1¢	green

Scott's unless otherwise specified.

UNUSED, OG, GUIDE LINE PAIR.

AND WE ARE OF THE OPINION THAT:

IT IS GENUINE, NEVER HINGED. \*\*\*\*\*

\*\*\* PF GRADED XF 90 \*\*\*



437527



*[Signature]*  
For The Expert Committee  
Chairman

F 150894

Photocopies of this Certificate are not valid.

Submitted by

REGENCY-SUPERIOR





# The Philatelic Foundation

501 Fifth Avenue • Suite 1901  
New York, NY 10017

EXPERT COMMITTEE

No. 0317707  
8/14/97

We have examined the enclosed item, of which a photograph is attached, and *described by the applicant* as follows:

Country: UNITED STATES OF AMERICA

<u>Cat. No.</u>	<u>Issue</u>	<u>Denom.</u>	<u>Color</u>
381	1911	10¢	yellow

Scott's unless otherwise specified.

UNUSED OG

AND WE ARE OF THE OPINION THAT:

IT IS GENUINE, PREVIOUSLY HINGED\* \* \* \* \*



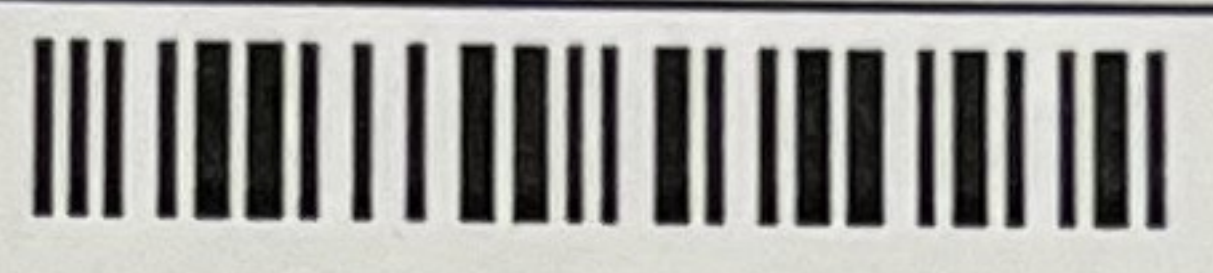
4655





No. 01032558

2/16/2006



### ***Professional Stamp Experts***

P.O. Box 6170, Newport Beach, CA 92658

#### ***Expert Committee***

We have examined the enclosed item submitted to PSE, of which an image is shown below, and are of the opinion that:

Cat #	Issue	Denom.	Color
US#493	1917	3c	Violet

**"it is a genuine unused, o.g., never hinged, coil joint line pair."**







No. 01012851

6/16/2005



**Professional Stamp Experts**  
P.O. Box 6170, Newport Beach, CA 92658

*Expert Committee*

We have examined the enclosed item submitted to PSE, of which an image is shown below, and are of the opinion that:

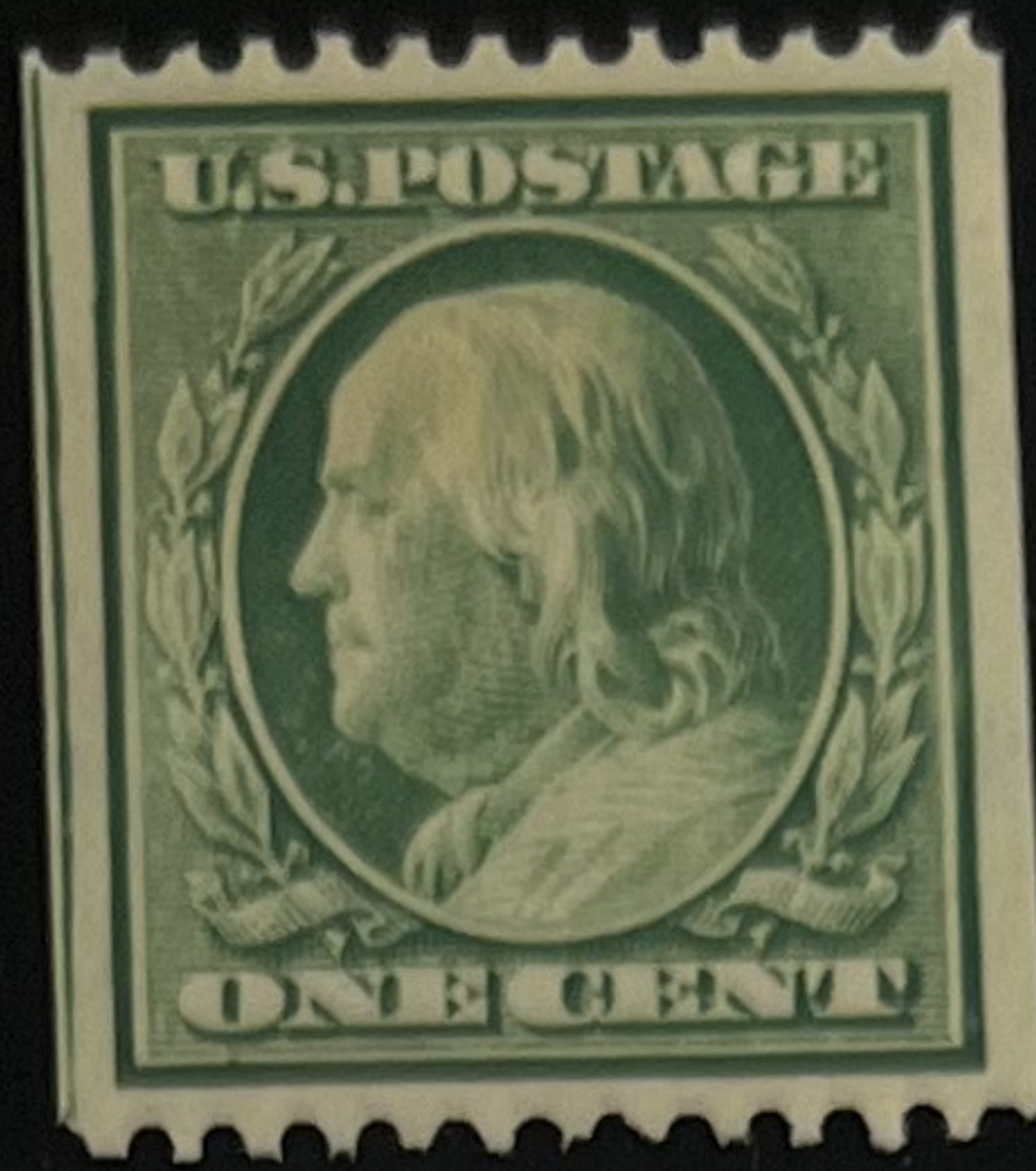
Cat #	Issue	Denom.	Color
US#349	1909	2c	Carmine

**GRADE: VF-XF 85, Mint OGnh**

**"it is a genuine unused, o.g., never hinged, coil single."**







No. 01004904

3/2/2005



***Professional Stamp Experts***

P.O. Box 6170, Newport Beach, CA 92658

***Expert Committee***

We have examined the enclosed item submitted to PSE, of which a photo is shown below, and are of the opinion that:

Cat #	Issue	Denom.	Color
US#348	1908	1c	Green

**GRADE: XF 90, Mint OGnh**

**"it is a genuine unused, o.g., never hinged, coil single."**





1908-09

PERFORATED 12 DOUBLE-LINE WATERMARK

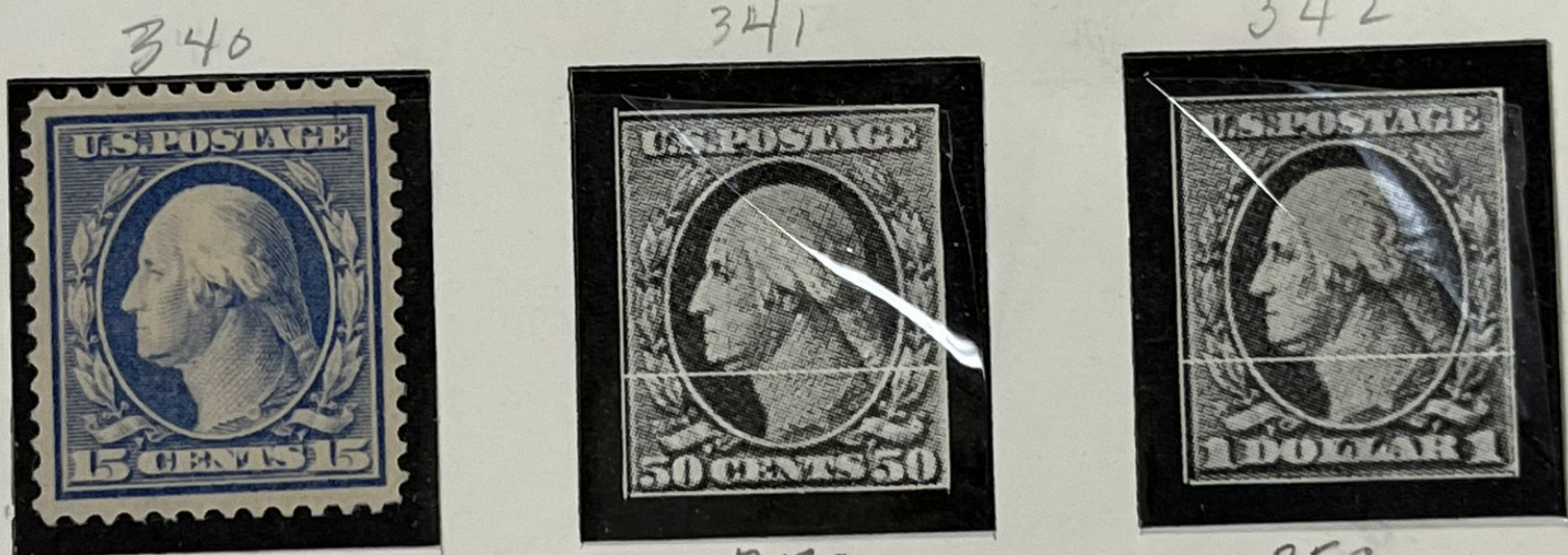


PFC



PSE

PFC



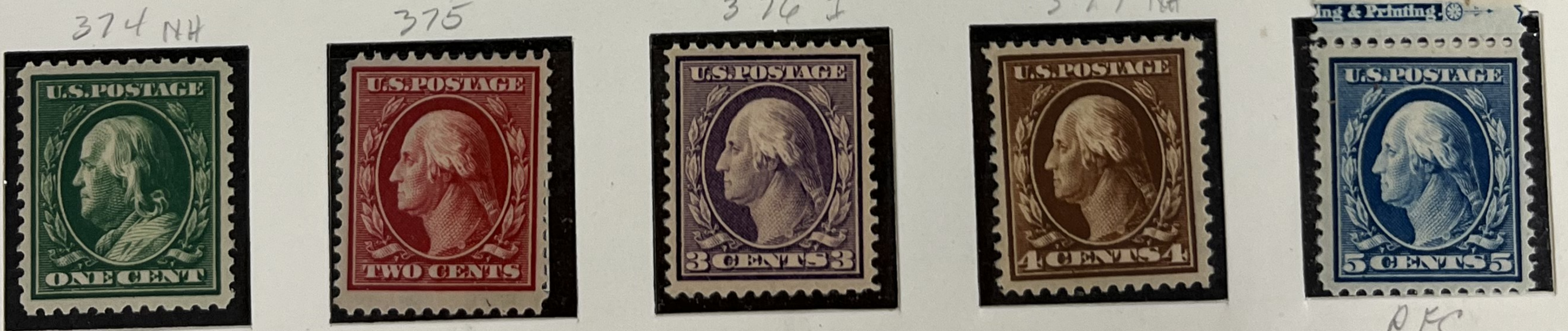
APSC

PFC

PFC

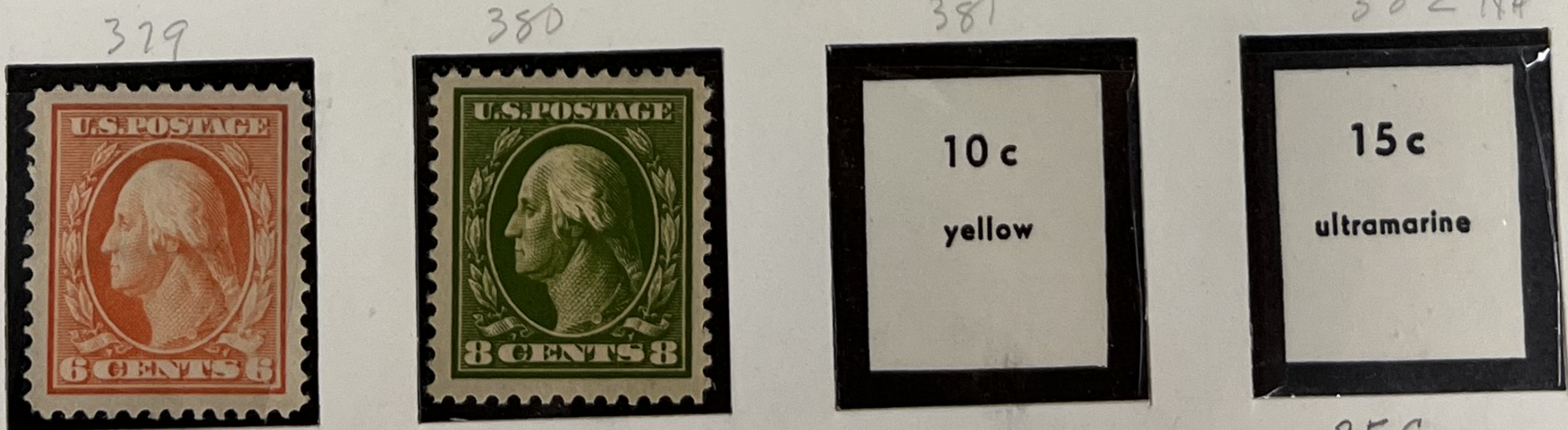
1910-11

PERFORATED 12 SINGLE-LINE WATERMARK



PFC

PFC



PFC

PFC

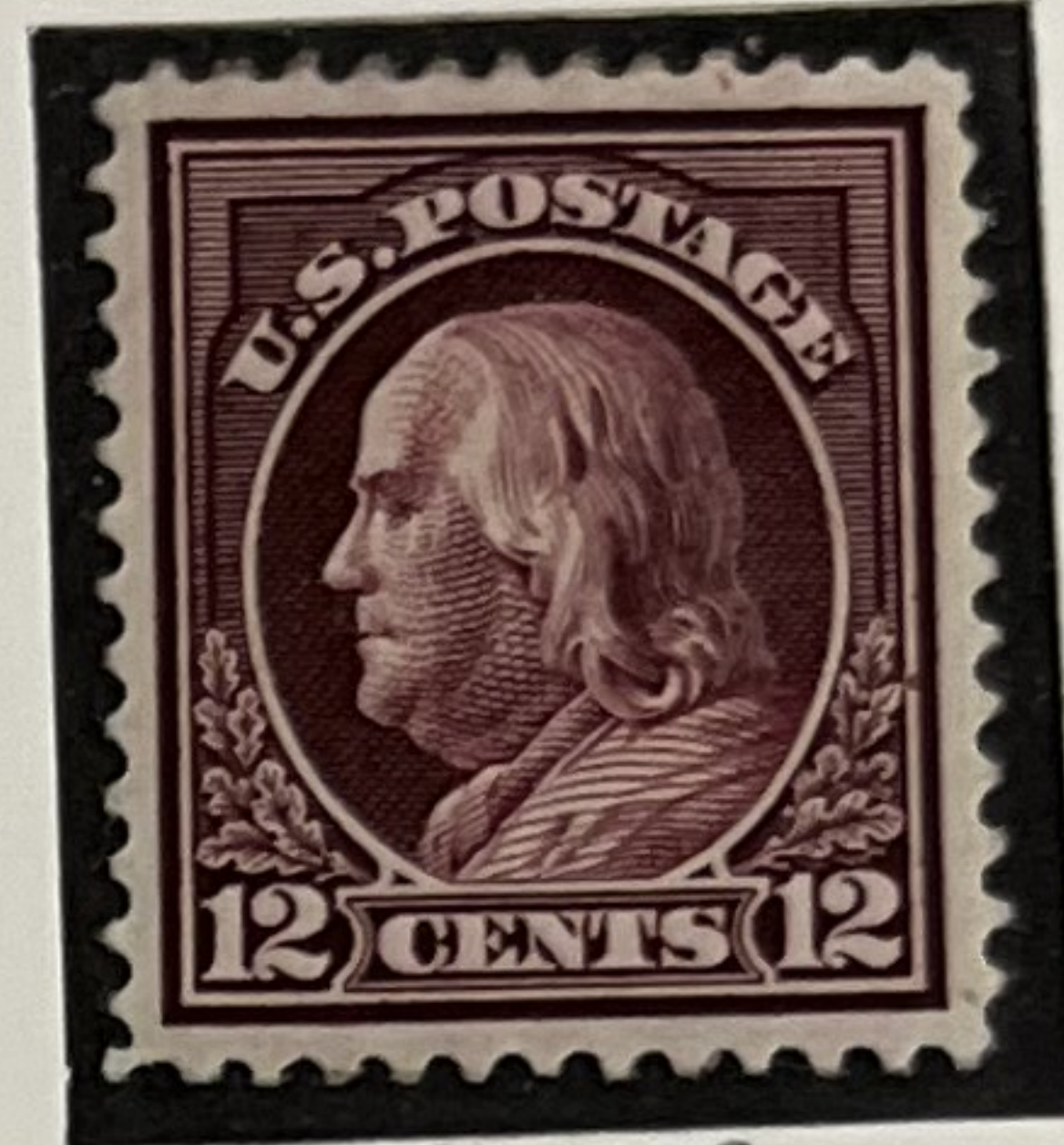
PFC

PFC



1912-14

PERFORATED 12 SINGLE-LINE WATERMARK



PFC

APSC

PFC



PFC

PFC

PFC

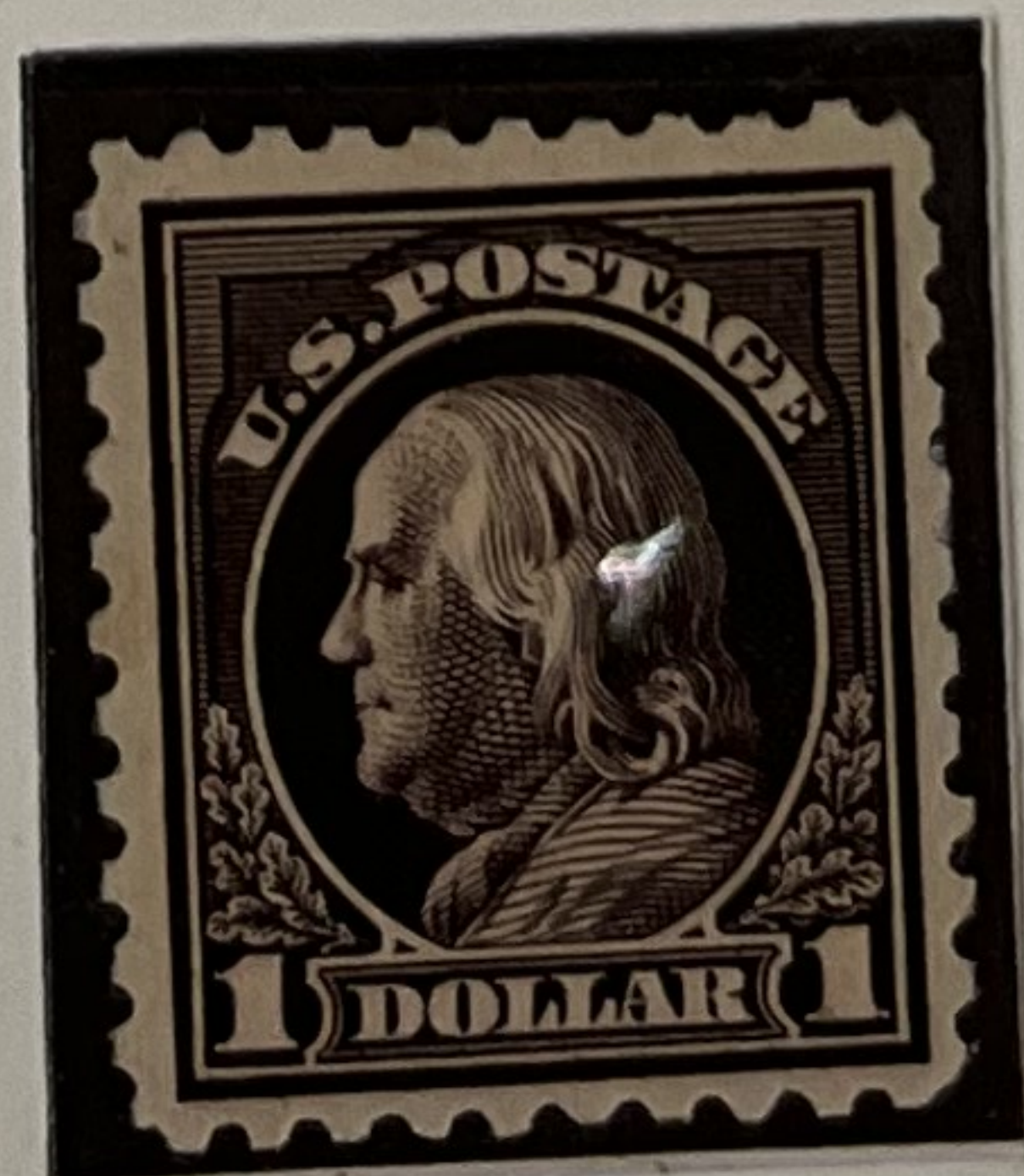
DOUBLE-LINE WATERMARK



PFC

PFC

PERFORATED 10



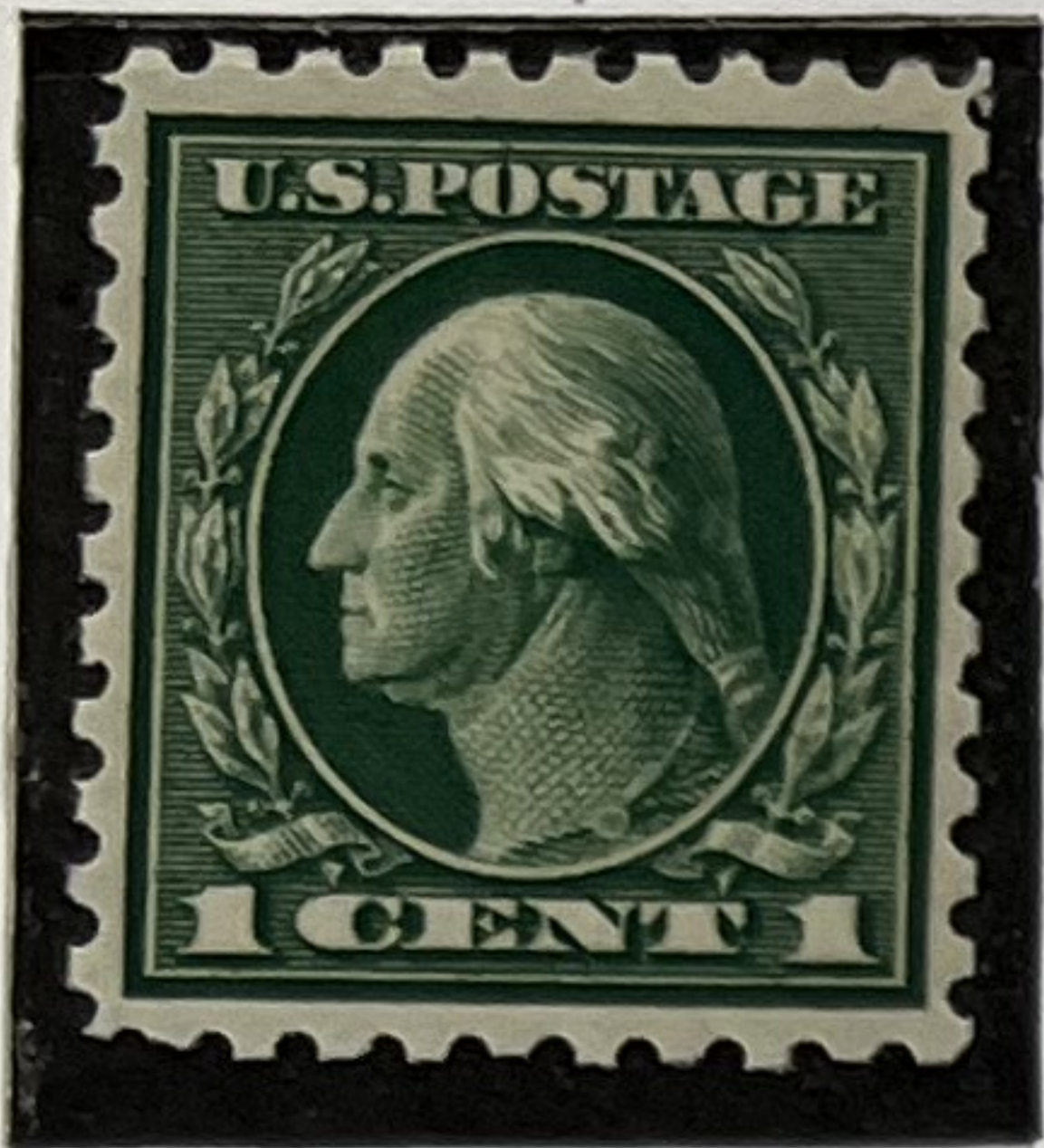
PFC



1914-15

PERFORATED 10 SINGLE-LINE WATERMARK

424 NH



425 NH



426



427 NH



428



429



430 NH



431



432 NH



433

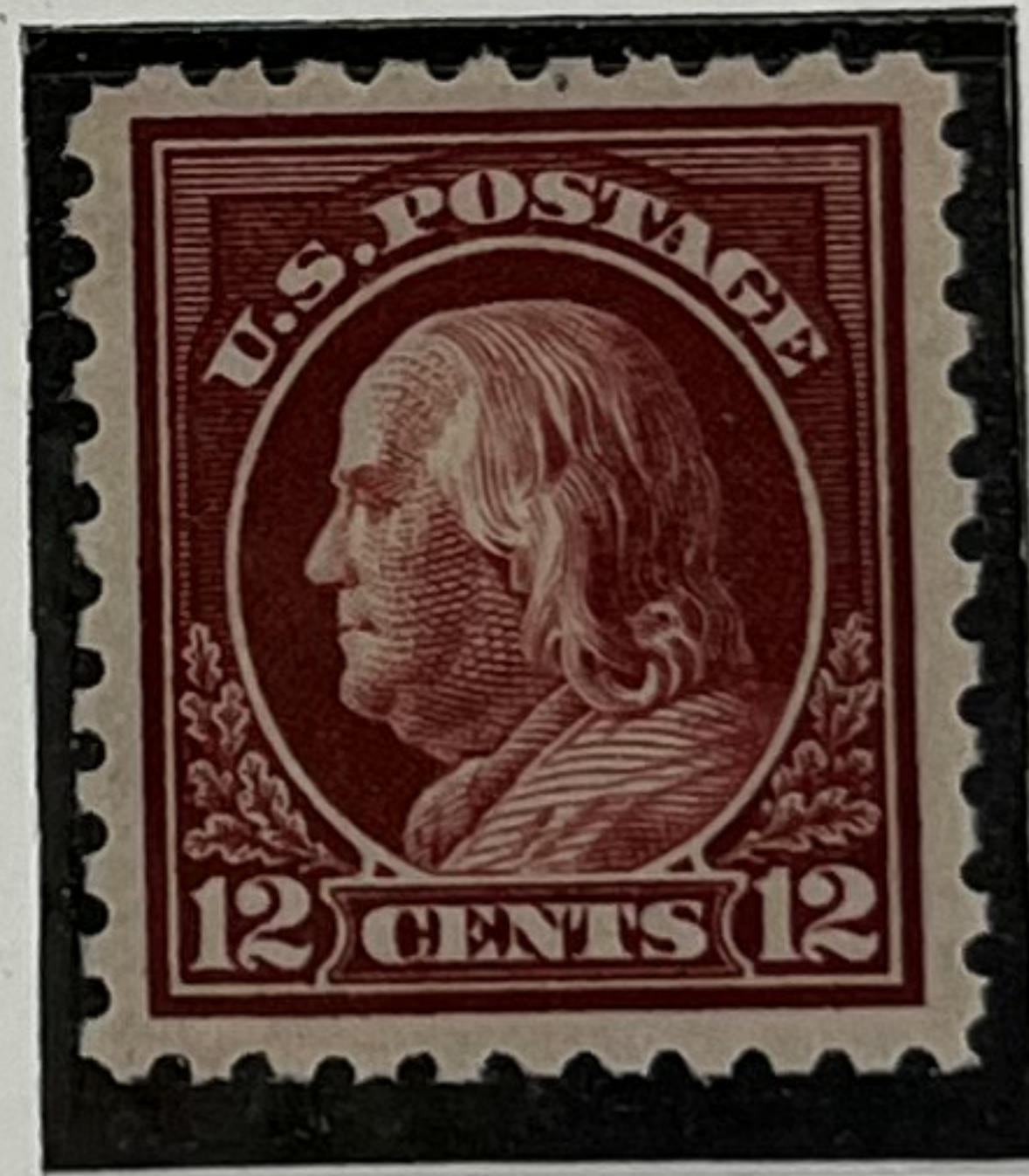


PFC

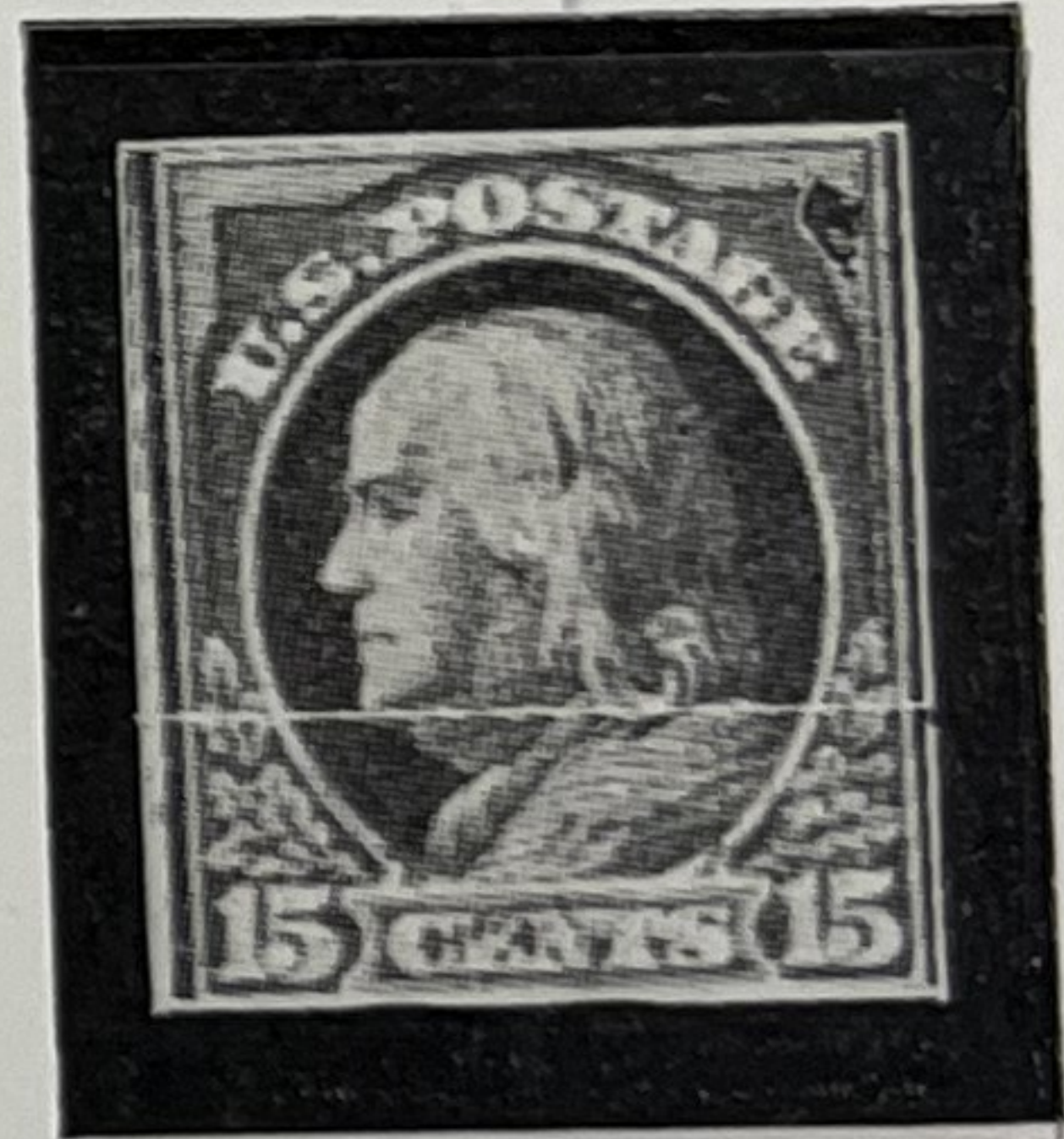
434



435 NH



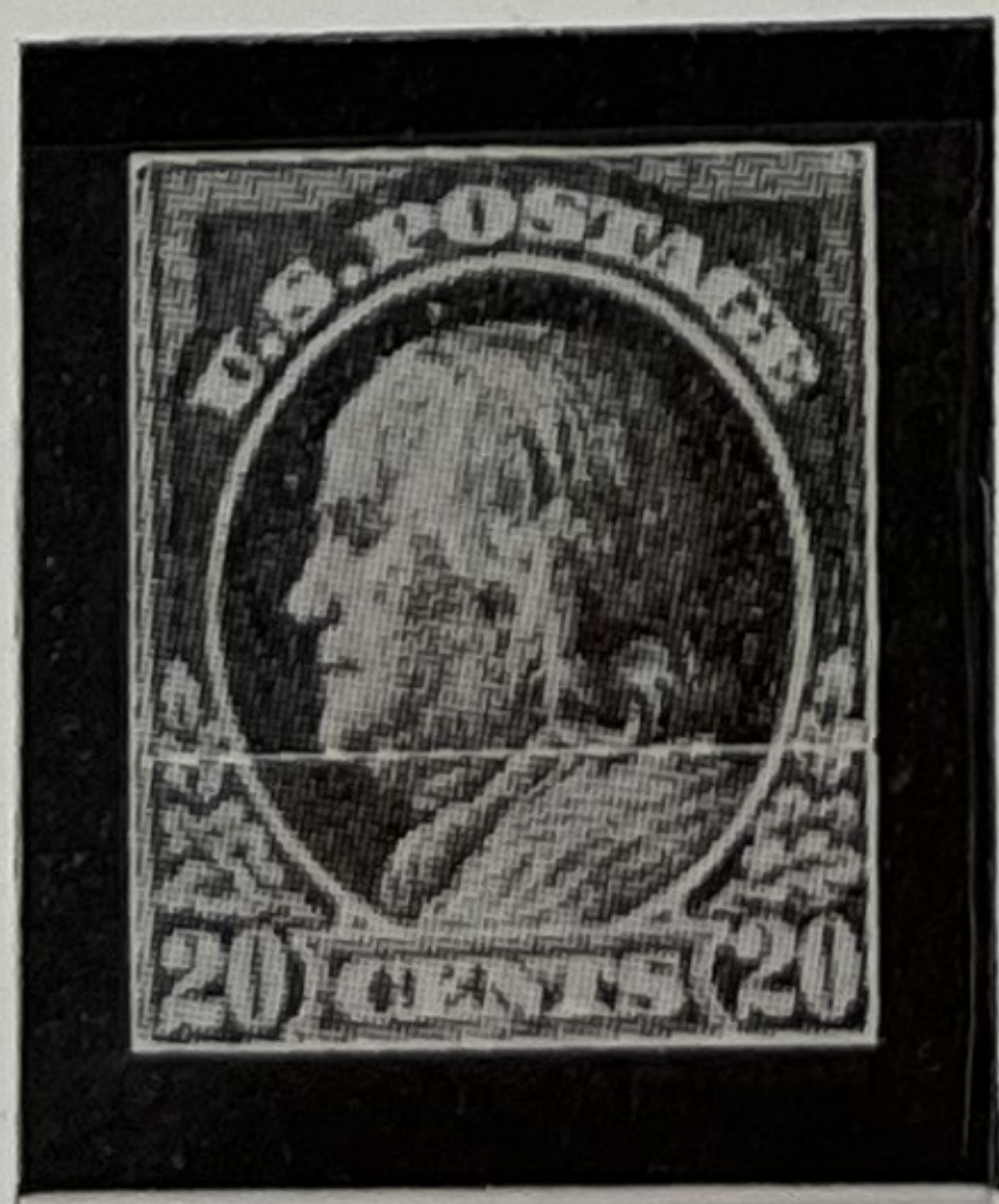
437 NH



PFC

PFC

438



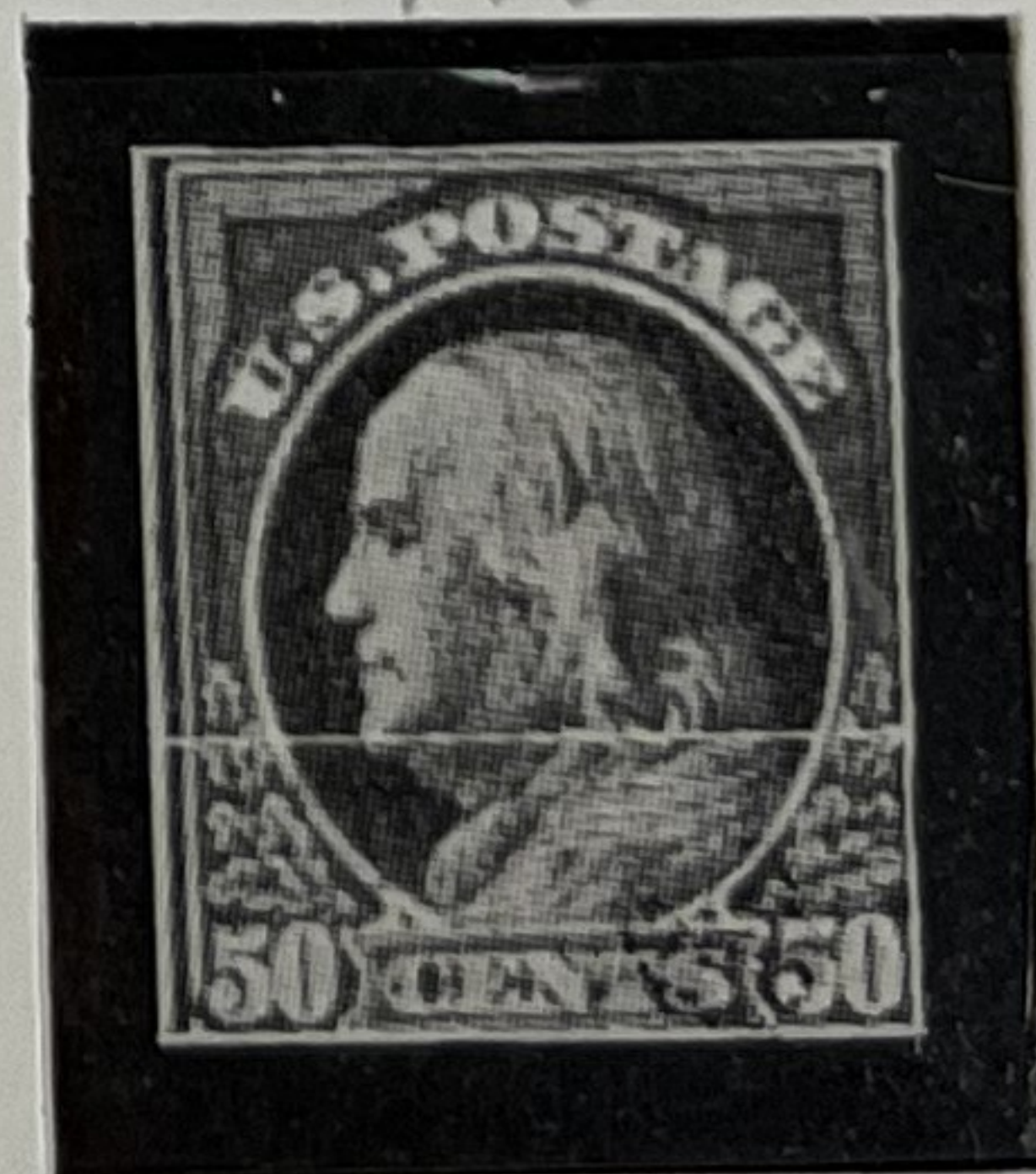
PFC

439



PFC

440 NH



PFC



1916-17

PERFORATED 10 UNWATER MARKED

462



463 I



464 I



465



466



467

PFC

PFC

468



469



470



471



472



ADSE

APSC

PSE

PFC

APSC

473 NH

474

475

476

477



APEX

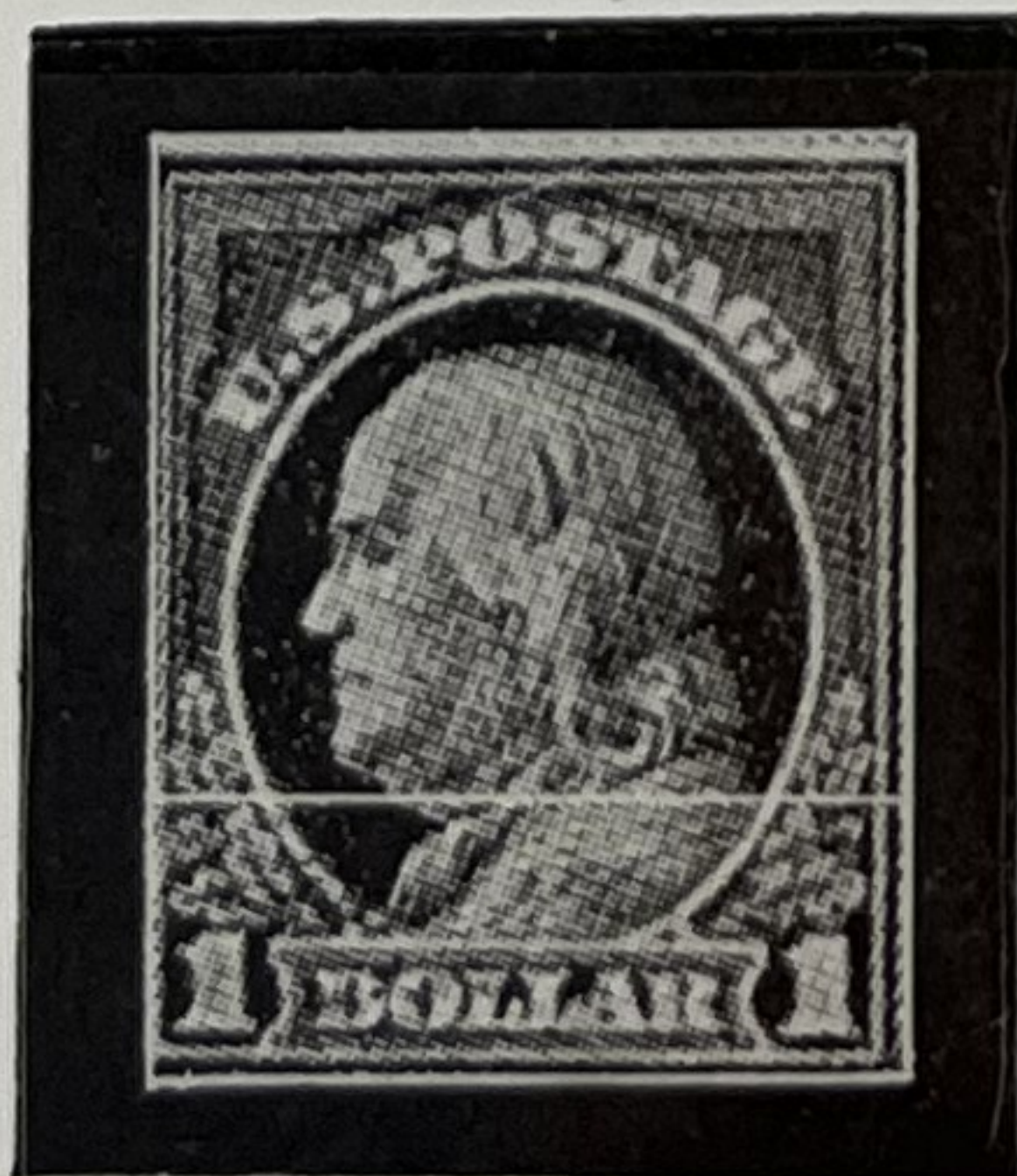
PFC

PFC

APSC

PFC

478



479



480



PFC

PFC

PFC



1917-19

PERFORATED 11 UNWATER MARKED

498 	499 	500 Ia 	519 	461 2c single-line 	501 I 	502 II 
503 	504 	505 5c blue 	506 	507 	508 	
	509 	510 	511 	512 	513 	
	514 	515 	516 	517 	518 	
		523 	547 	524 		



1918-20

OFFSET PERFORATED 11



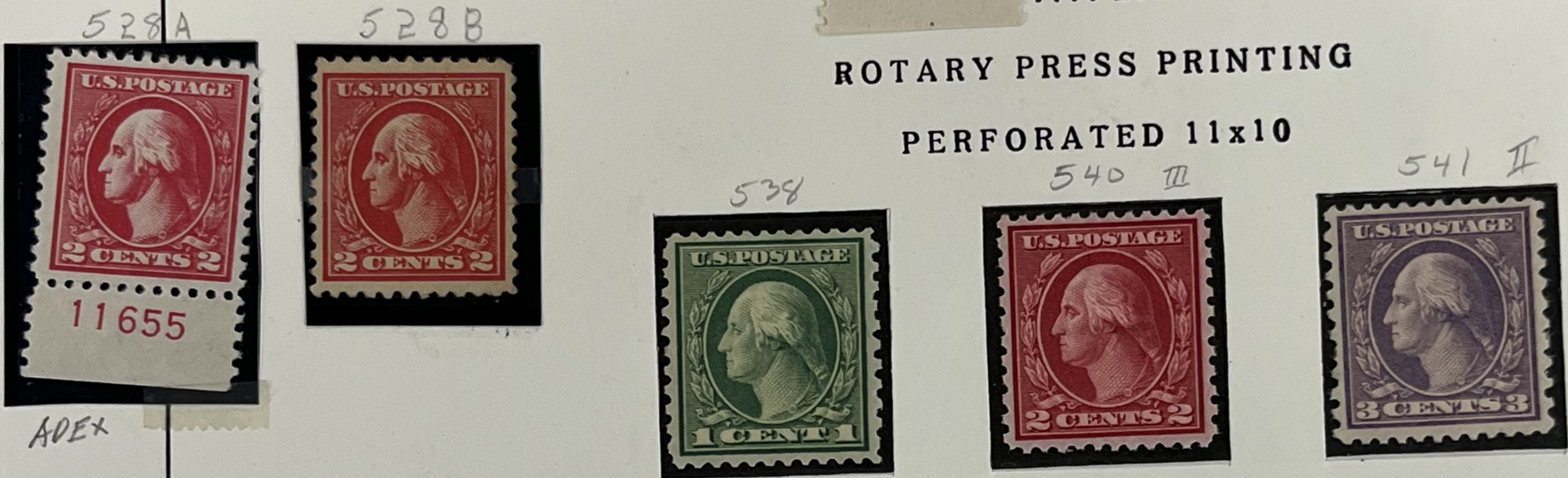
Perf 12 1/2  
(well centered  
rare)

11330

1919-21

ROTARY PRESS PRINTING

PERFORATED 11x10

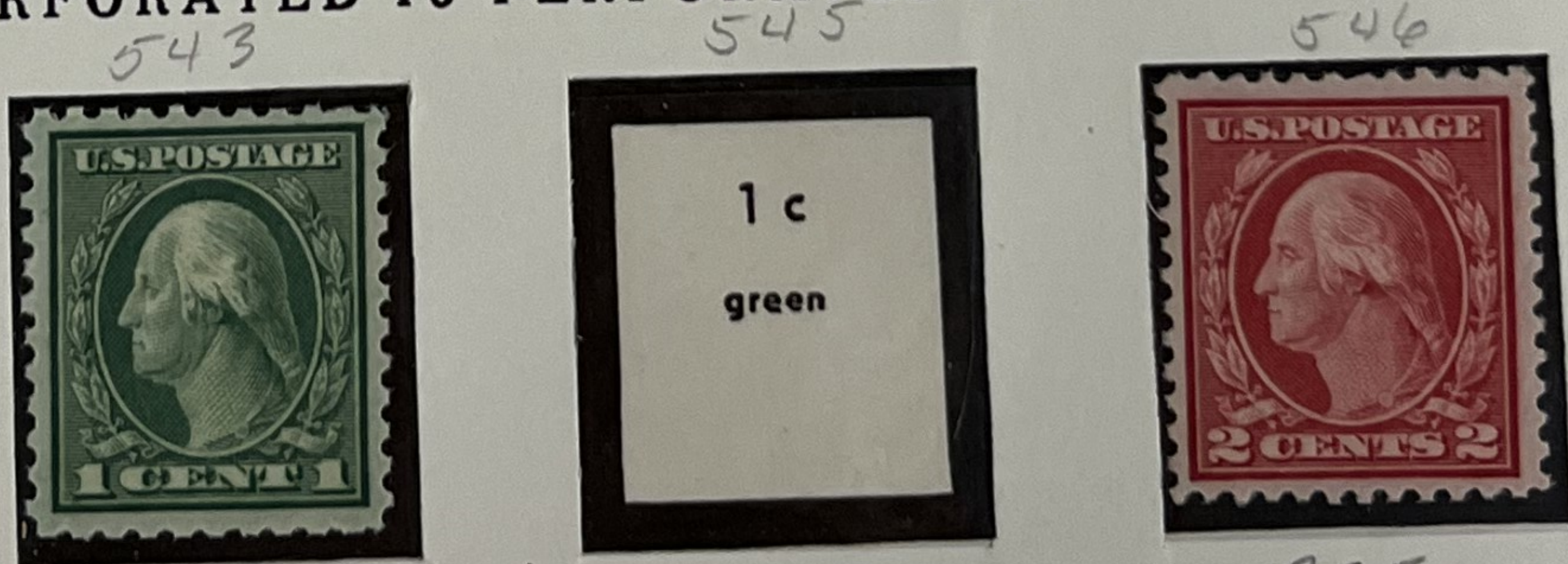


ADEX

PERFORATED 10x11



PERFORATED 10 PERFORATED 11 PERFORATED 11



PFC

PSE



Coil Stamps - 1908-10

Double line watermark - Perf 12  
These are the first regularly issued coils  
for sale on a regular basis. Scott # - 348-356

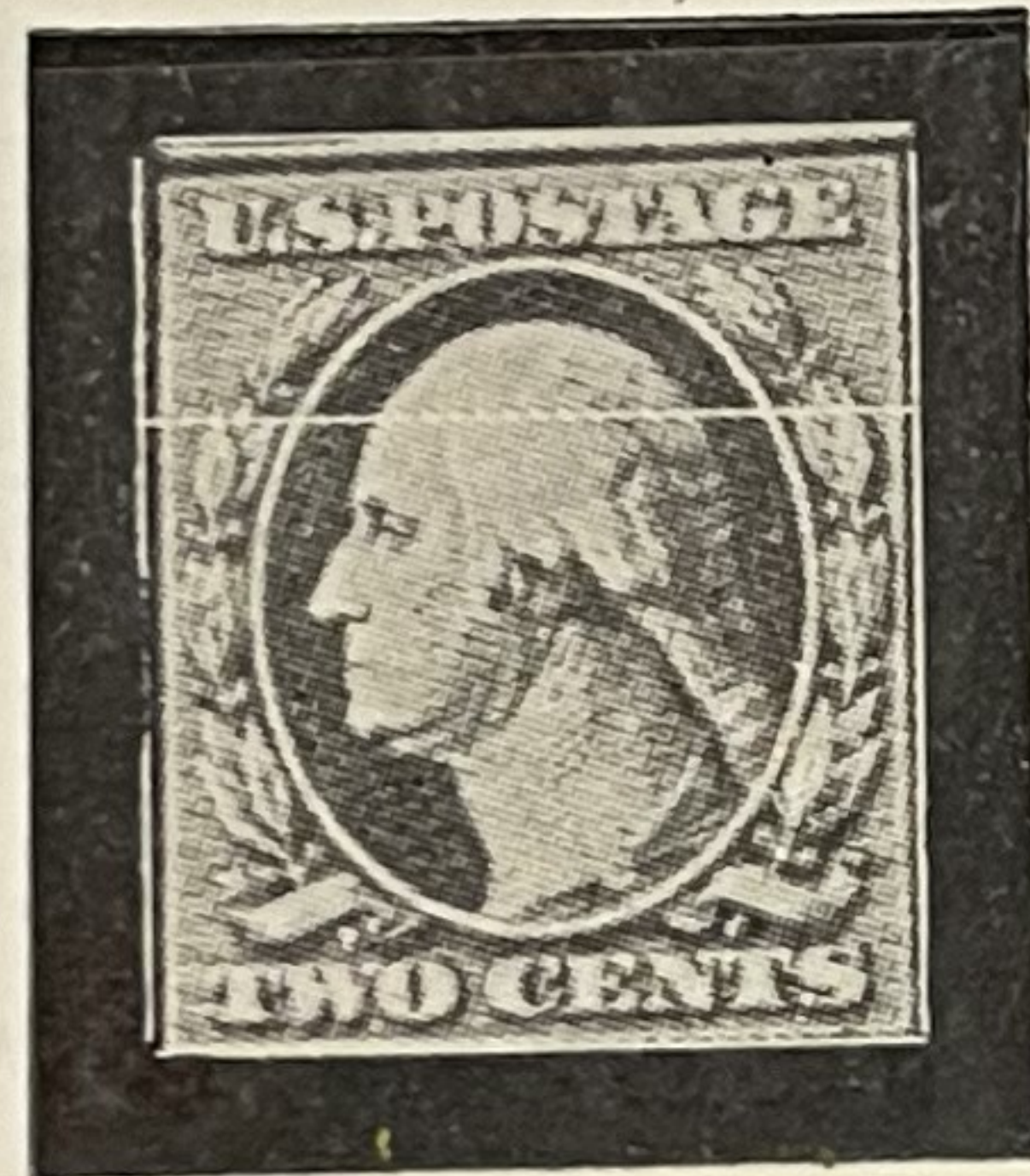
PERFORATED 12 HORIZONTALLY DOUBLE-LINE WATERMARK

348



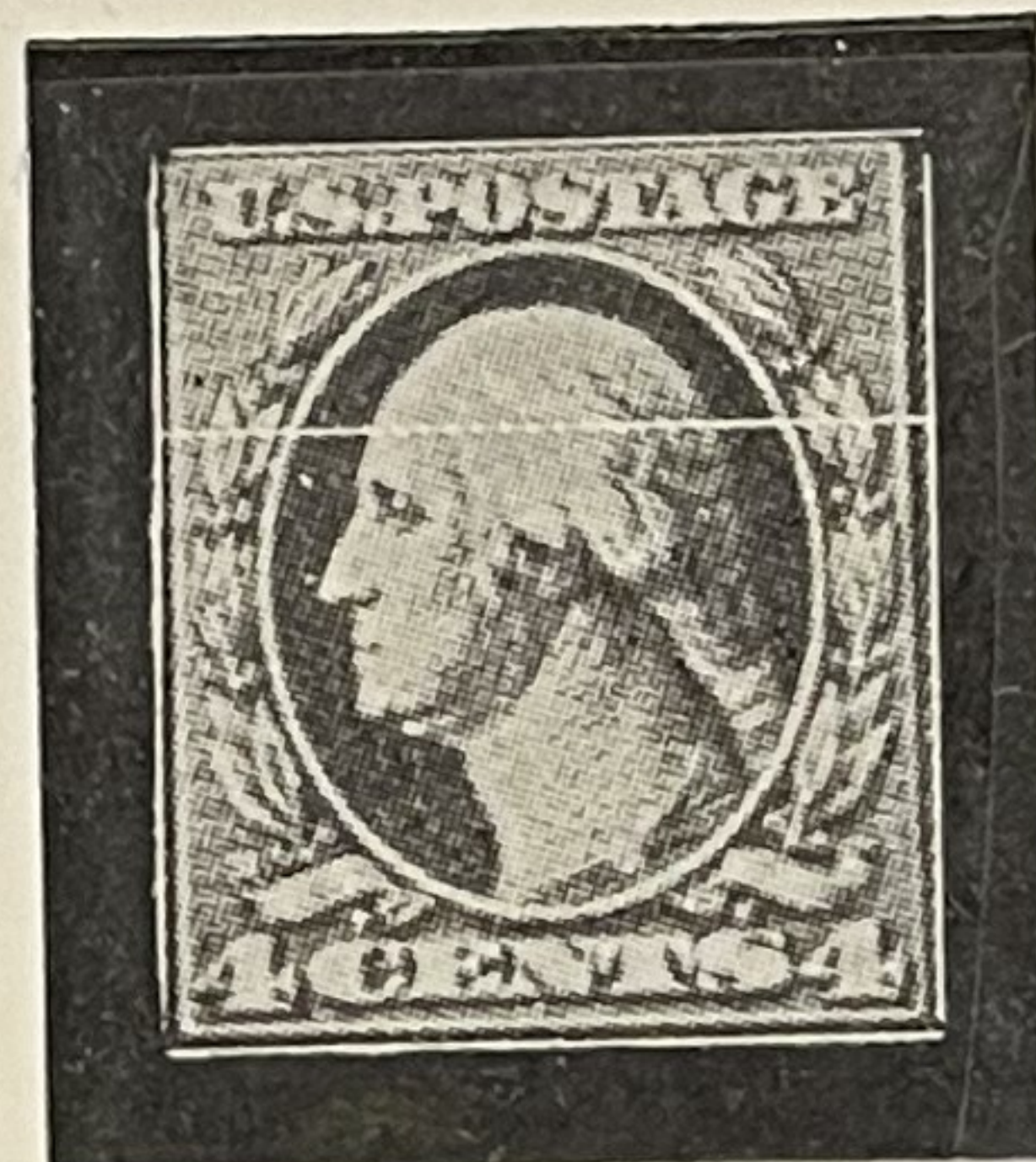
PSE

349



PSE

350



PSE

351



PFC

PERFORATED 12 VERTICALLY

352



PFC

353



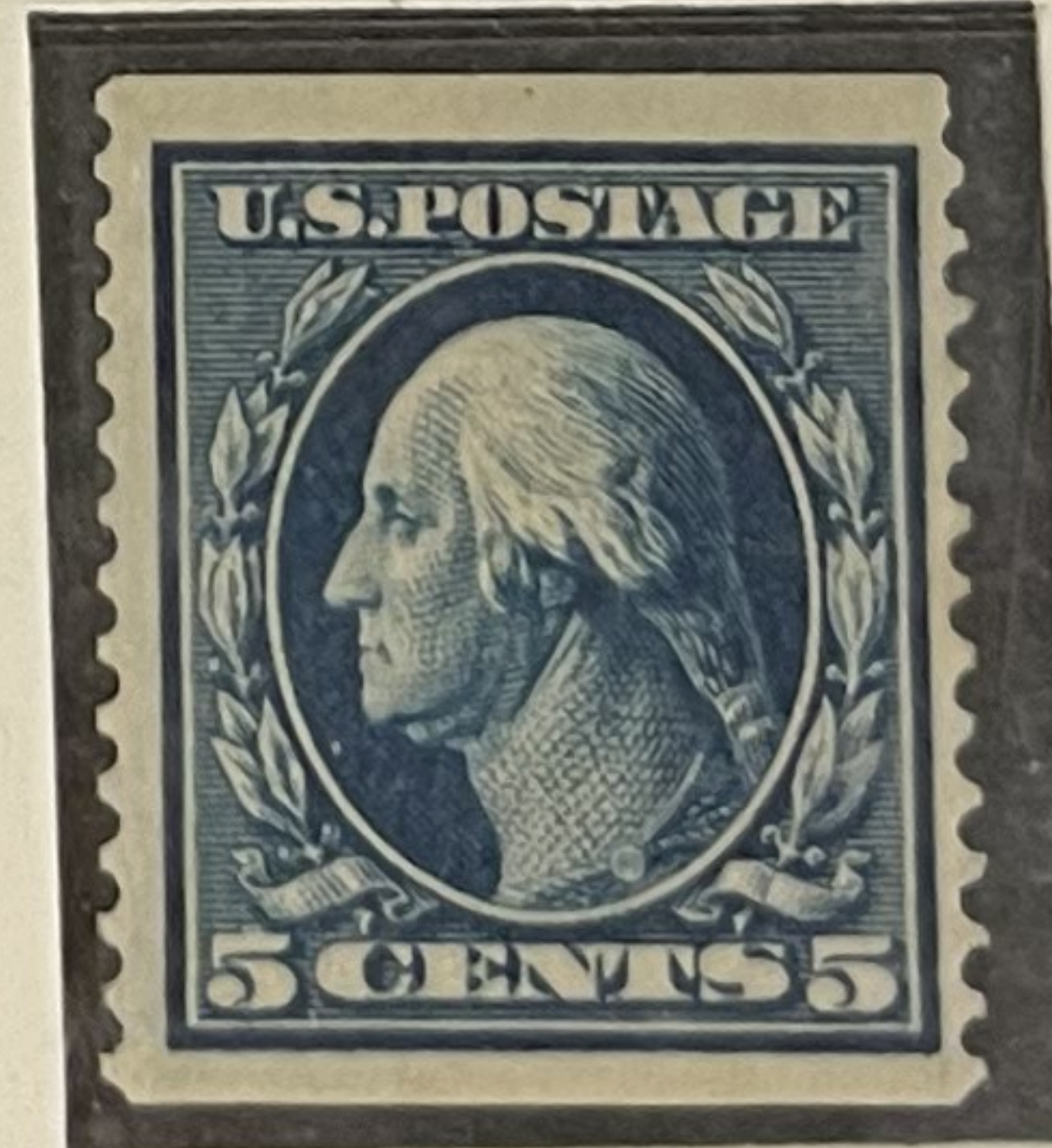
APSC

354



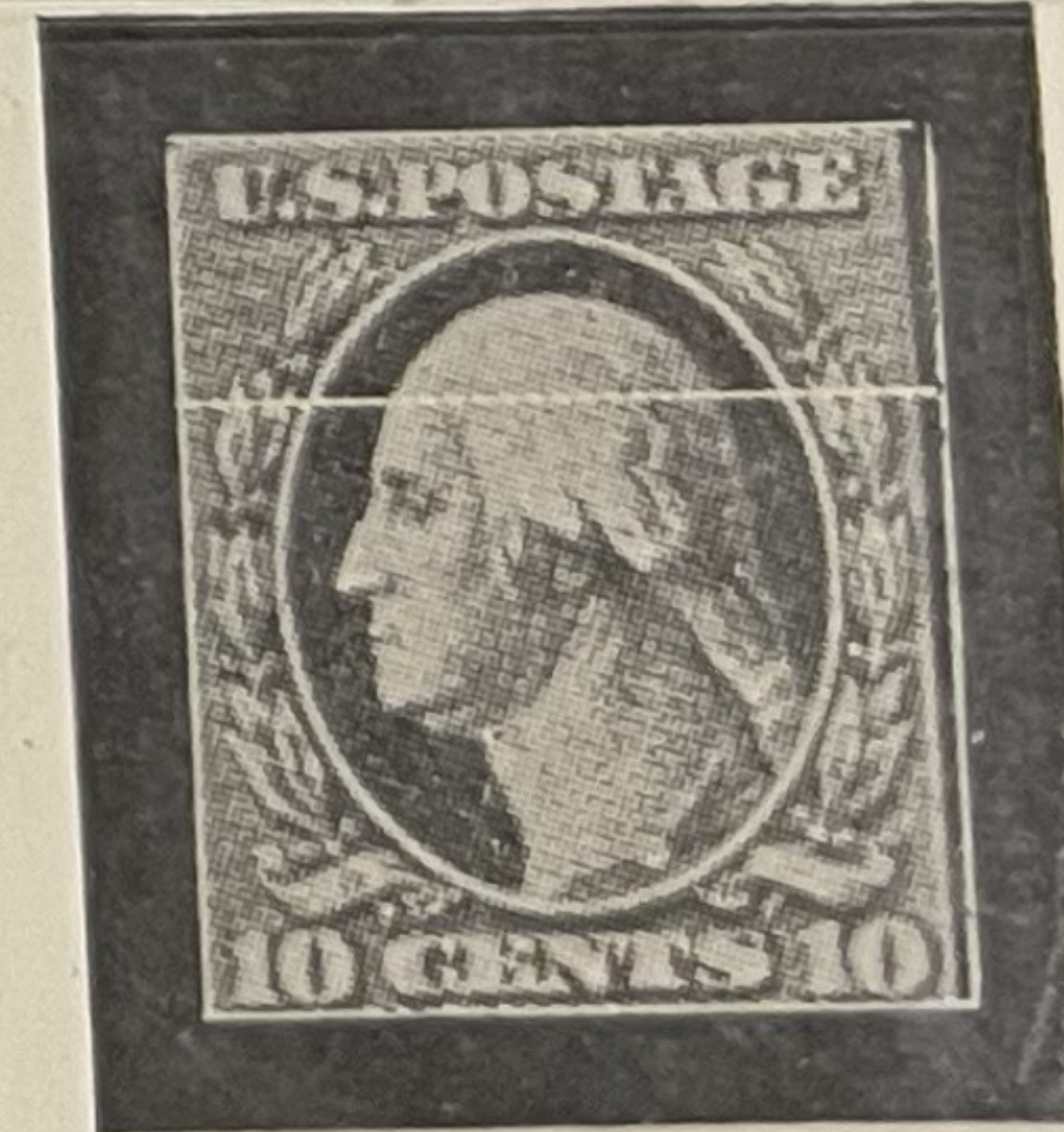
PSE

355



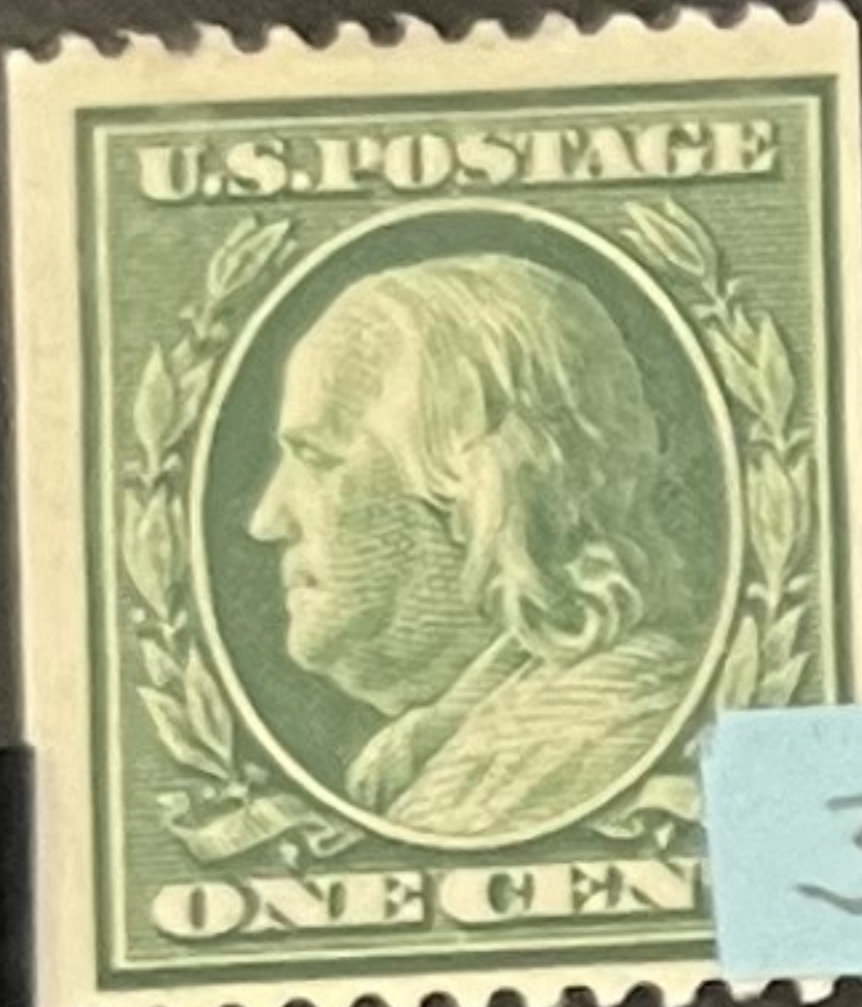
APSC

356

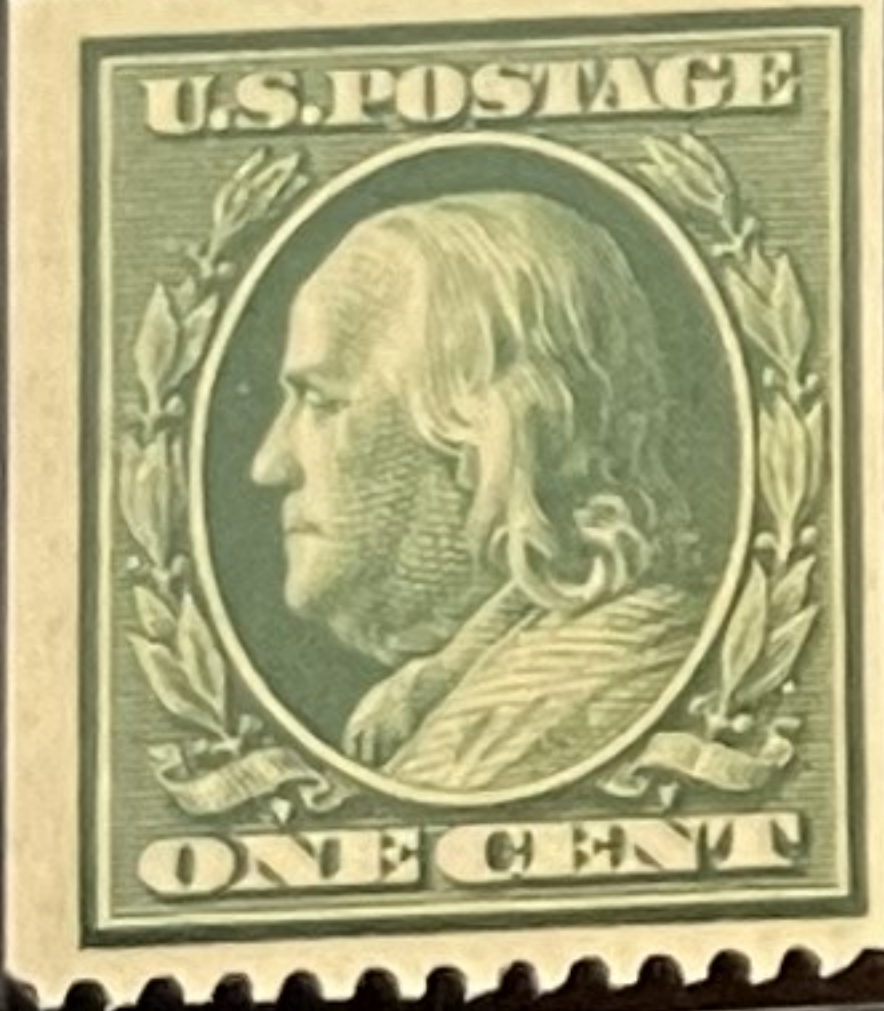
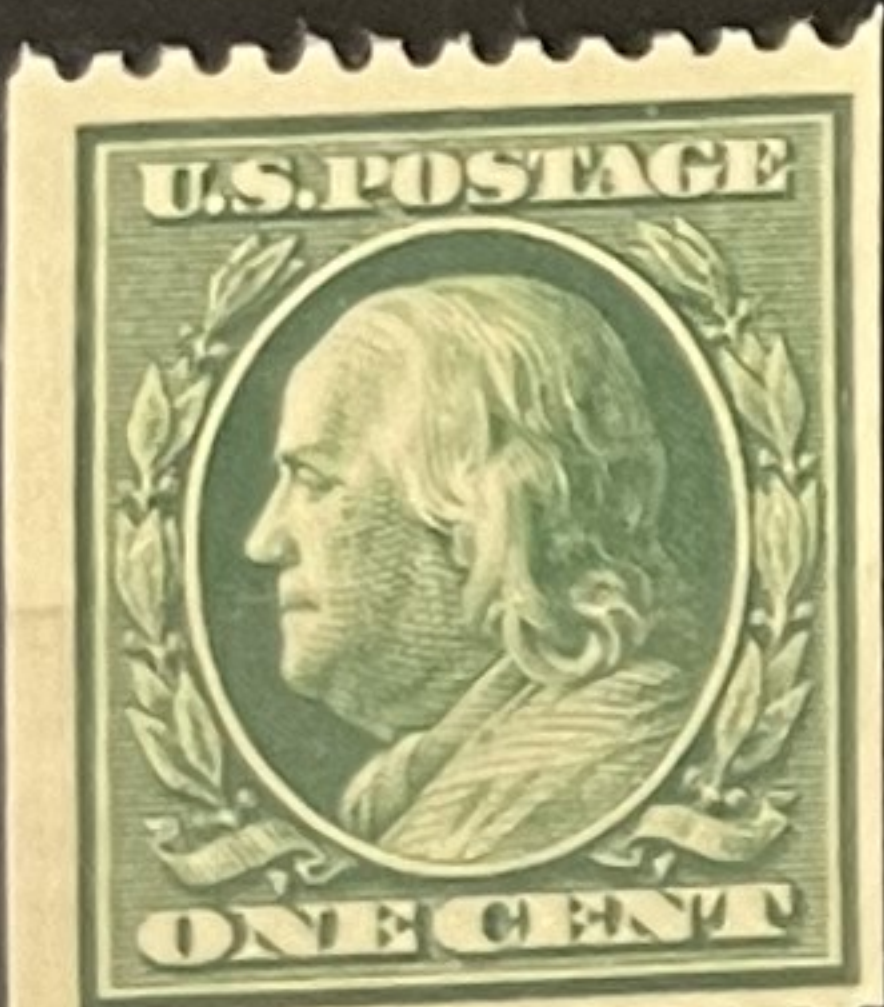


PFC





385 APS



385 PFC



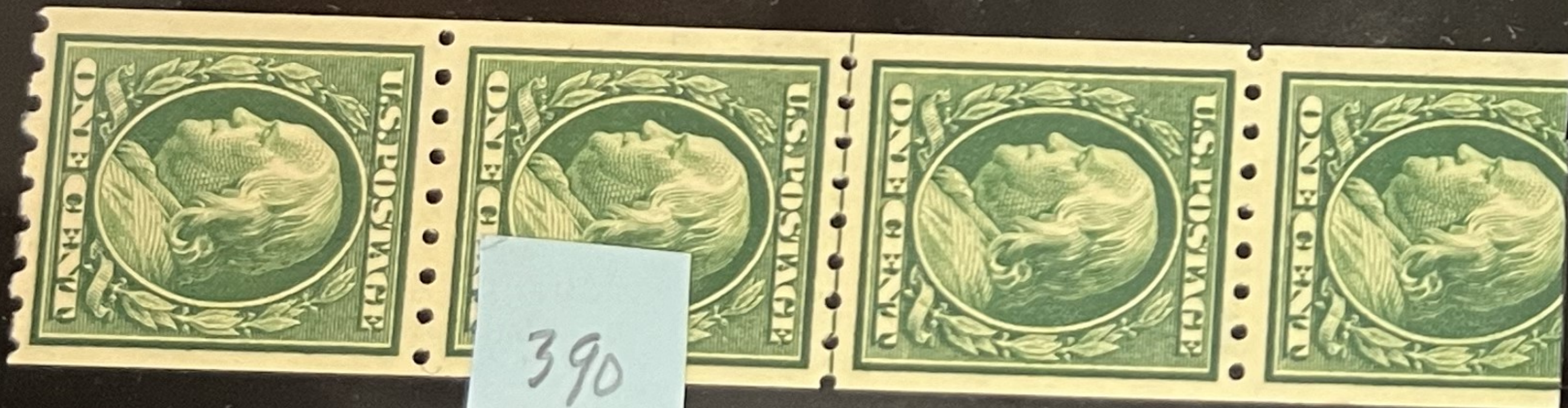
386 PFC

Coil Stamps - 1910-11  
Single line Watermark, Perf 12  
Scott # 385-389 (389-rarest-Orangeburg)

Scott 384  
Orangeburg Coil  
The rarest coil  
3¢ Deep violet



Coil Stamps 1910-13 Type I  
Per f. 8 1/2 - Single line Watermark  
Scott # 390-396 all are certified



390



396



Coil Stamps 1912  
single line watermark Perf 8 1/2  
Scott # 410-413



410



413



1914

COILS

PERFORATED 8½ HORIZONTALLY

390

391 NH



PERFORATED 8½ VERTICALLY

392

393

394

395

396



PERFORATED 8½ HORIZONTALLY

PERFORATED 8½ VERTICALLY

410

411

412

413



Paste-up Pair  
441



PERFORATED 10 HORIZONTALLY SINGLE-LINE WATERMARK

441

442



PERFORATED 10 VERTICALLY

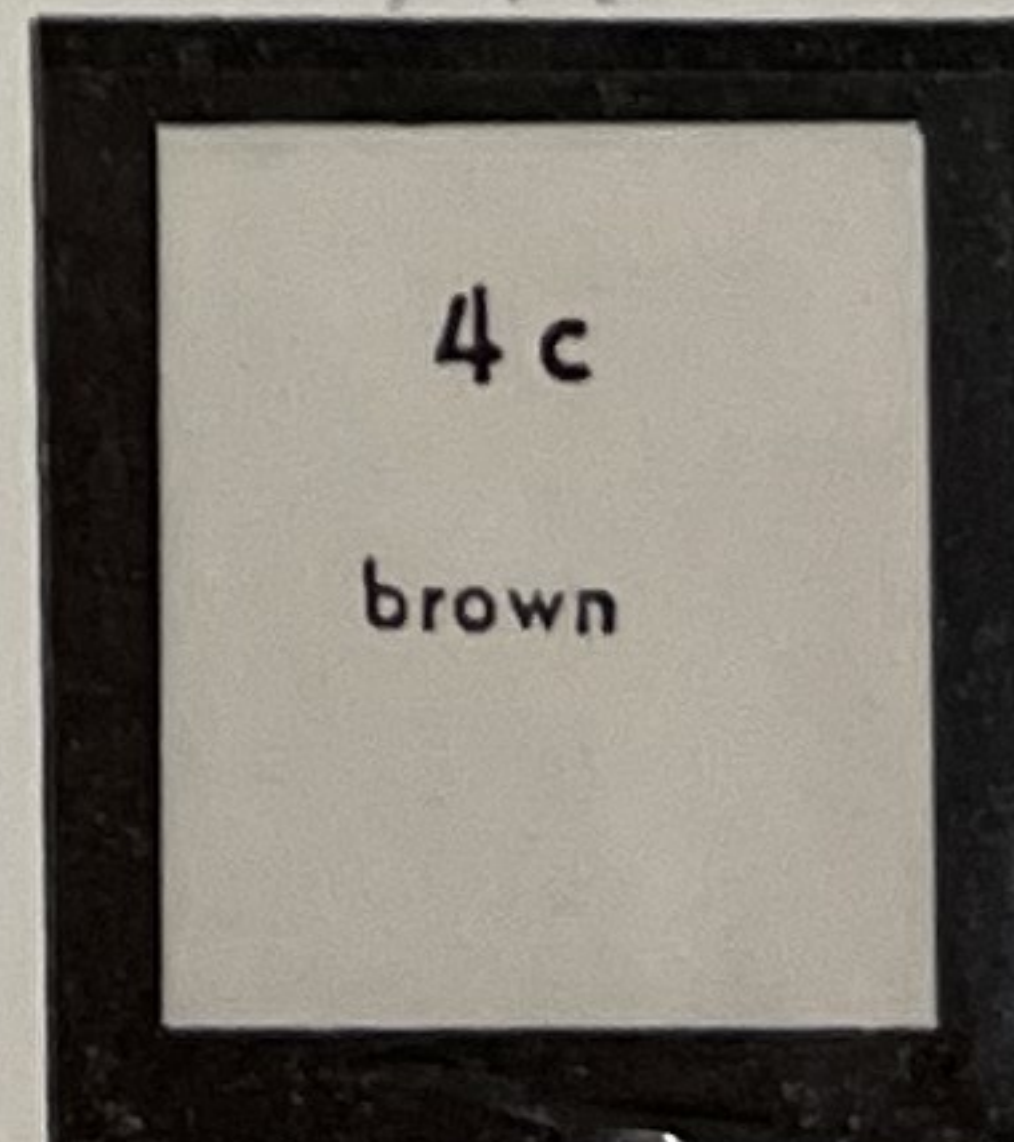
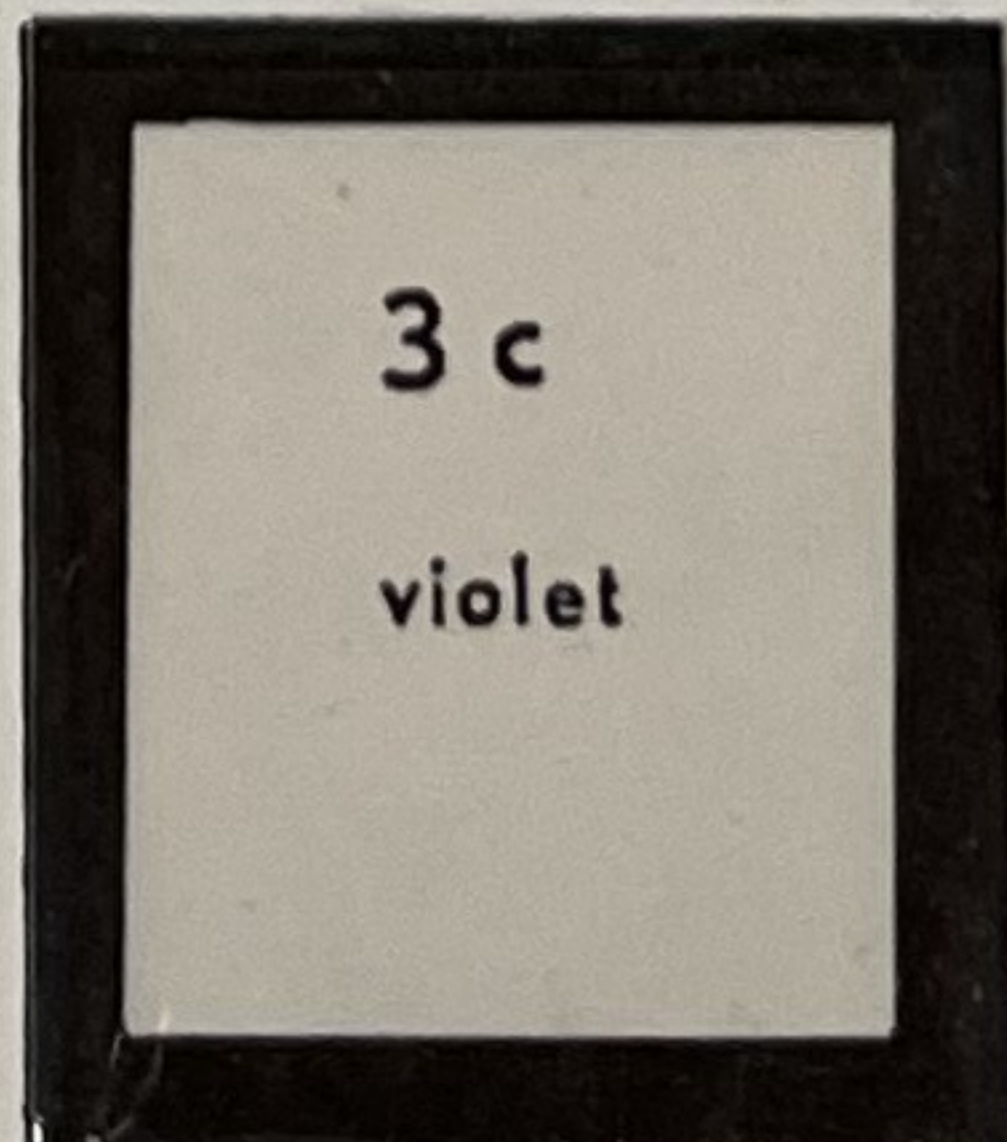
443

444 INH

445 I

446

447





Coil stamps - 1914 Type I  
Single line watermark Perf 10  
Scott # 441-447



441

447

Coil stamps - 1915-16 - Type I, II, III  
Single line watermark - Perf 10  
Rotary Press - "Joint line" Scott # 448-458



448



452



458



Coil Stamps 1916-22 - Type I, II, III  
Un watermarked Perf 10  
Rotary Press "Joint line" Scott # 486-497



486



488



489  
2 shades



497

Made in Germany  
LWS 2007



1914-22

COILS

PERFORATED 10 HORIZONTALLY



ROTARY PRESS PRINTING

PERFORATED 10 VERTICALLY



APSC

APSC

APSC

COILS PERFORATED 10 HORIZONTALLY

UNWATER MARKED



PERFORATED 10 VERTICALLY



PFC





IMPERFORATES

DOUBLE-LINE



DOUBLE-LINE



SINGLE-LINE



UNWATER MARKED

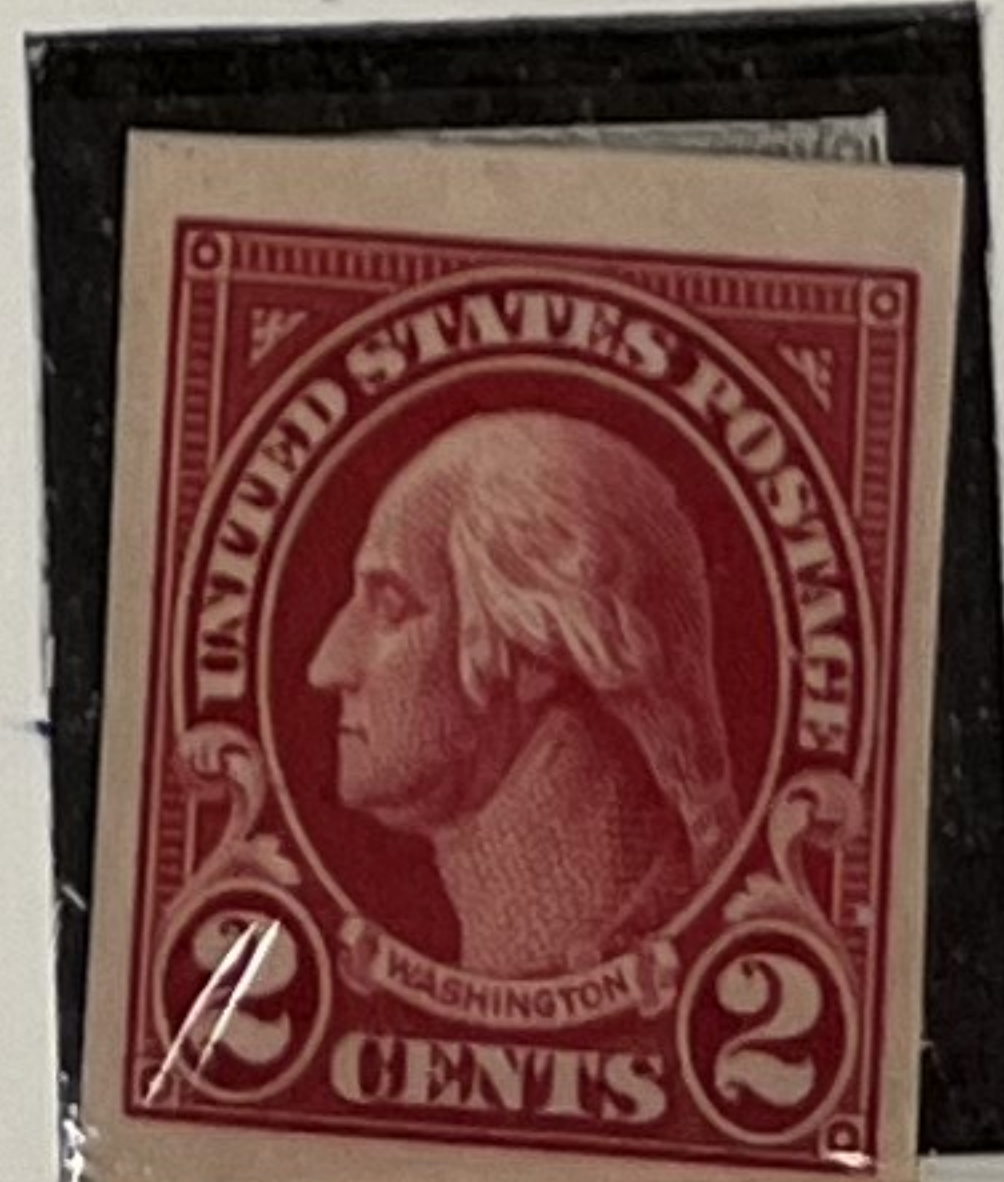
ROTARY



OFFSET PRINTING



FLAT PLATE PRINTING



#631