

BELGIEN / BELGIUM / BELGIQUE / BELGIE

Königreich / Kingdom / Royaume

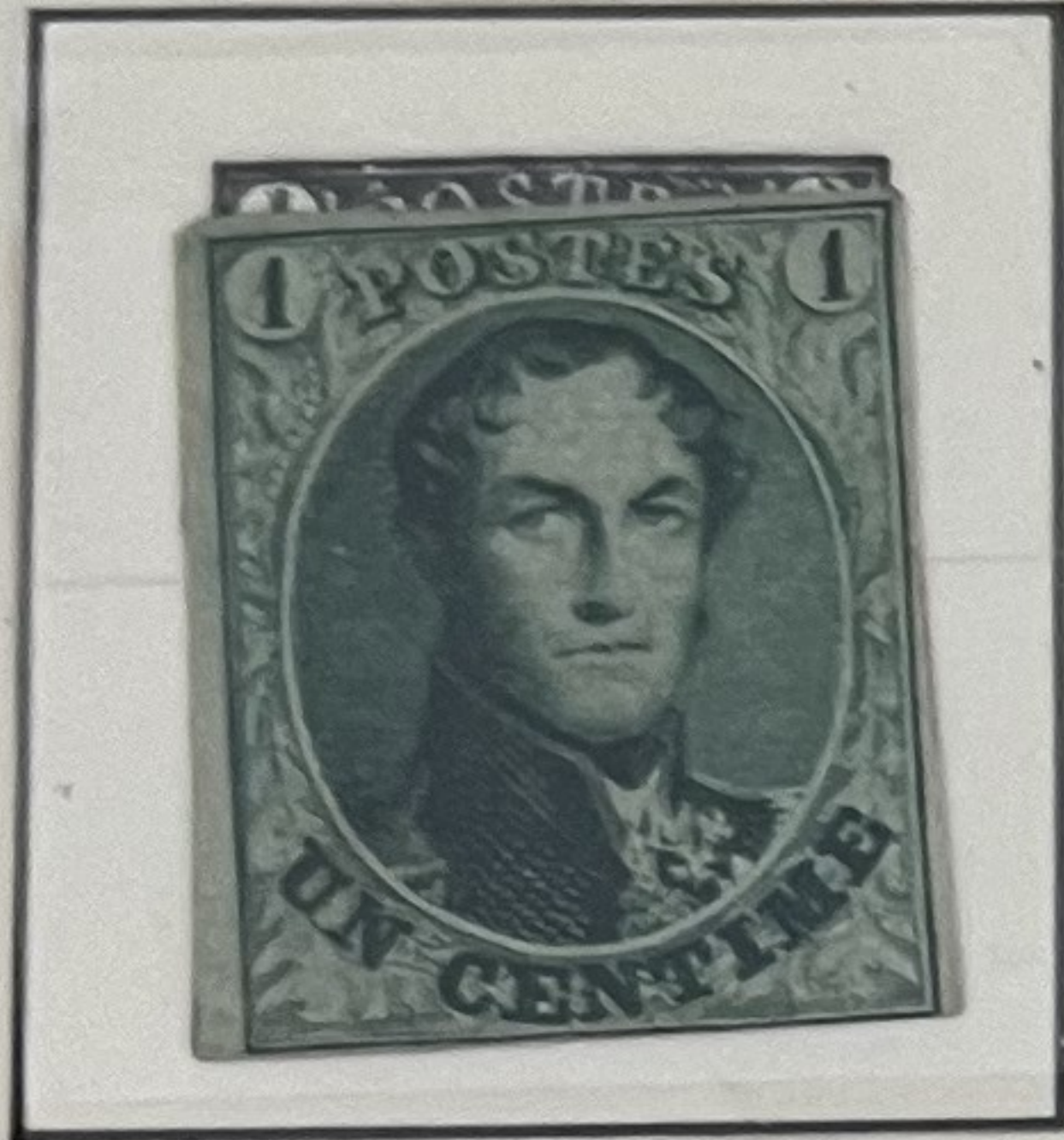
1849 —



2c

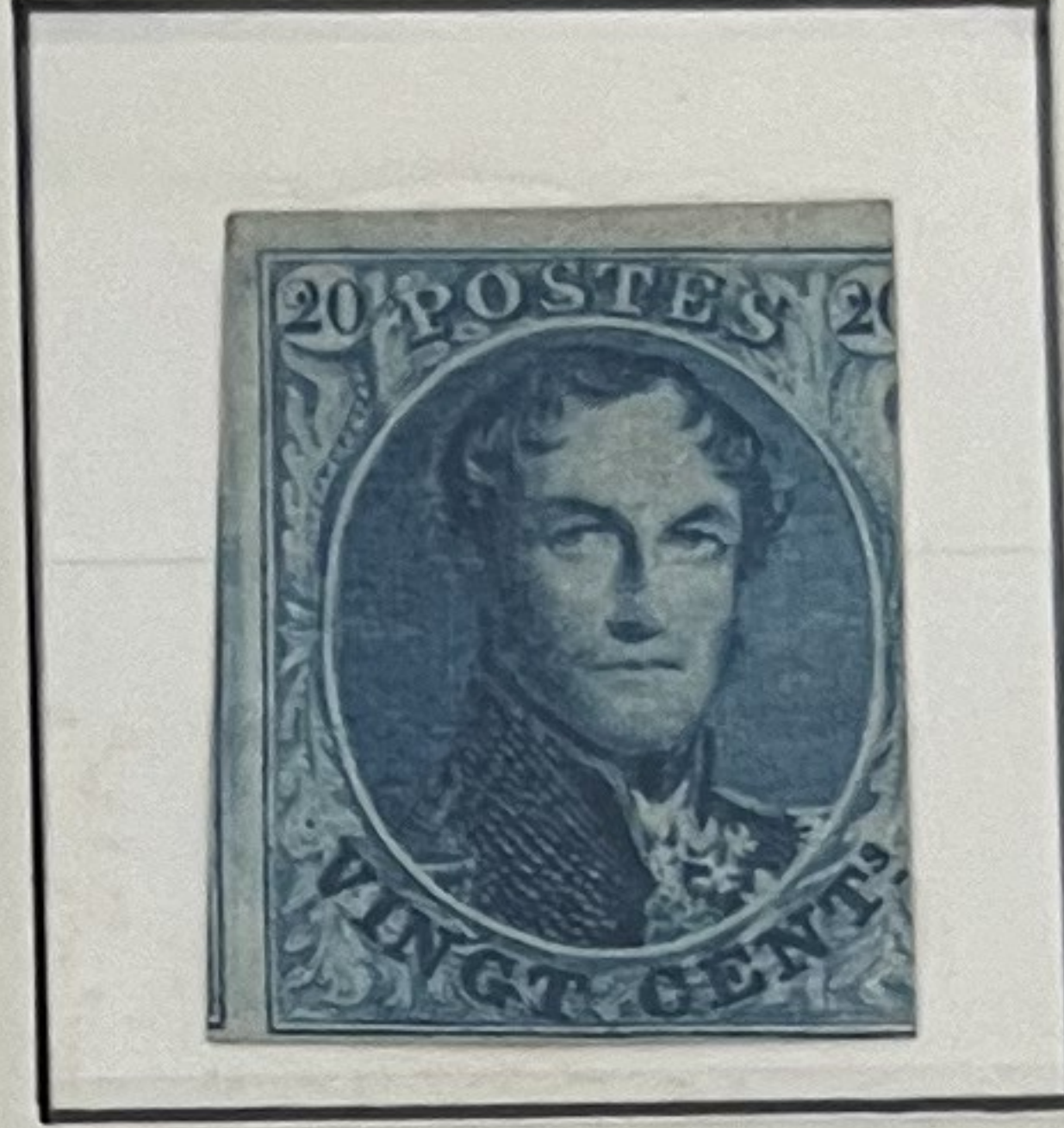
2a 160

1849/61 —



(grün
green | vert)
←

10
DIX
CENT(imes)
braun
brown | brun

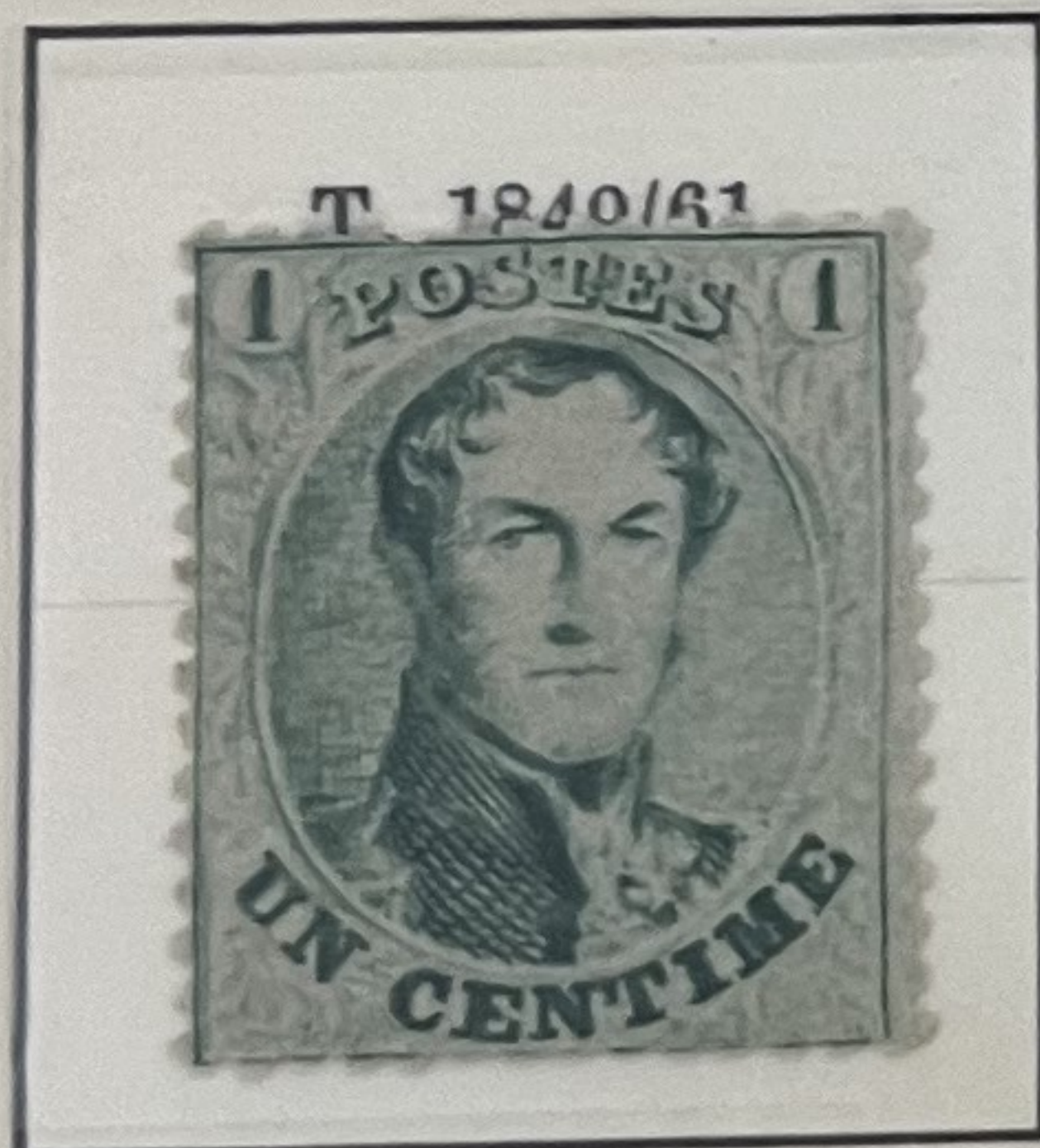


40
QUARANTE
CENT(imes)
rot
red
rouge

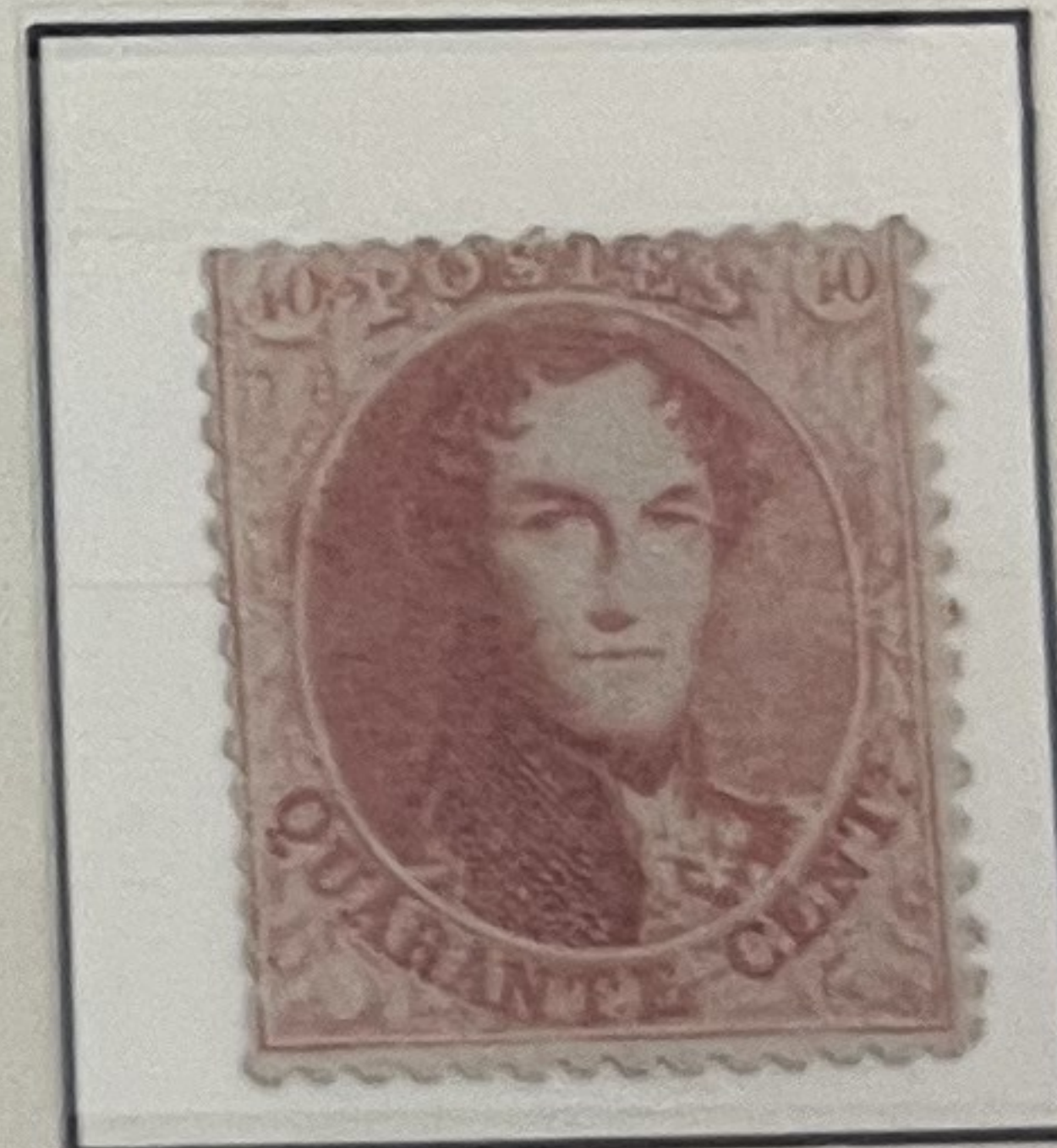
225-

500

1863 ~

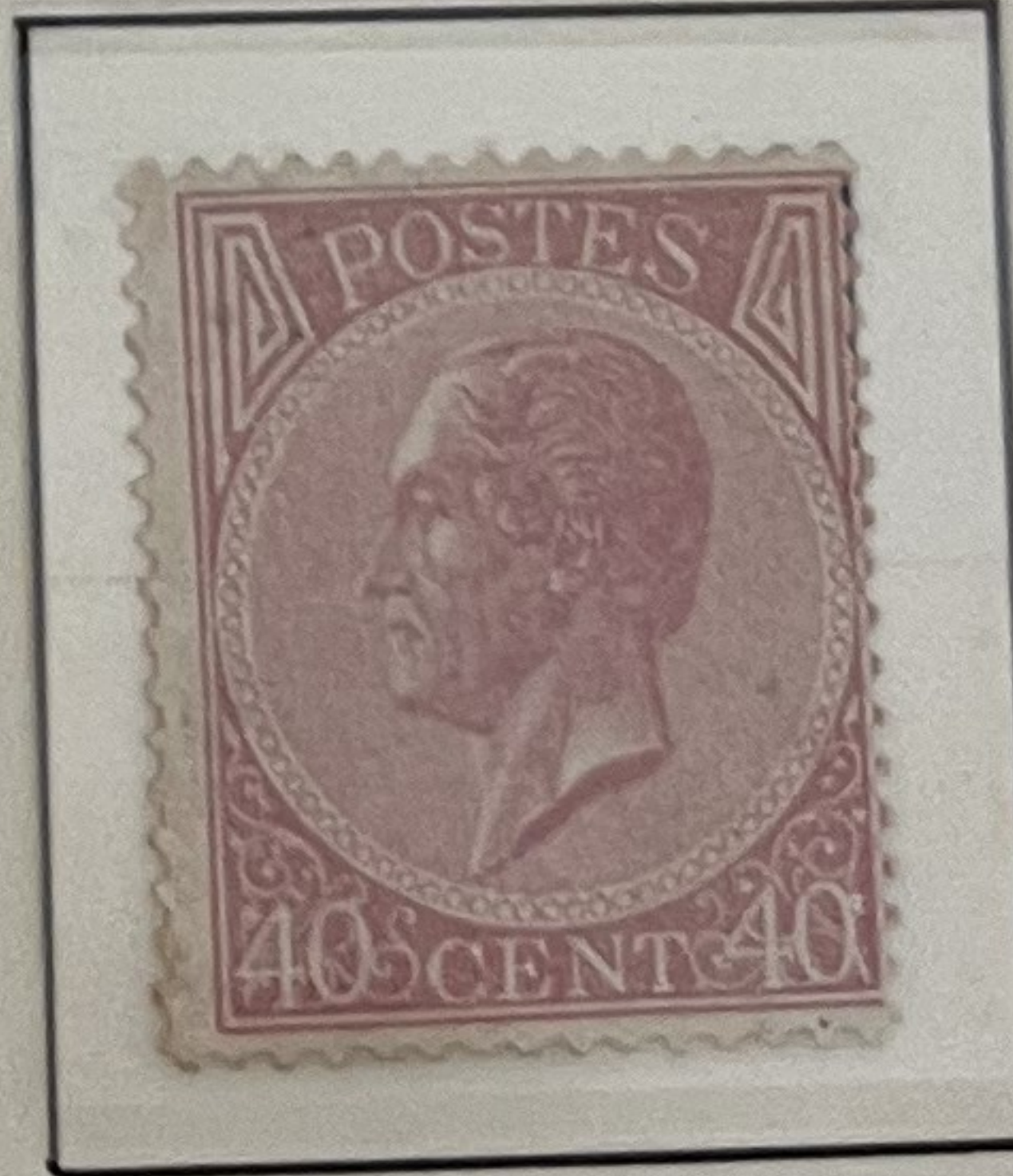
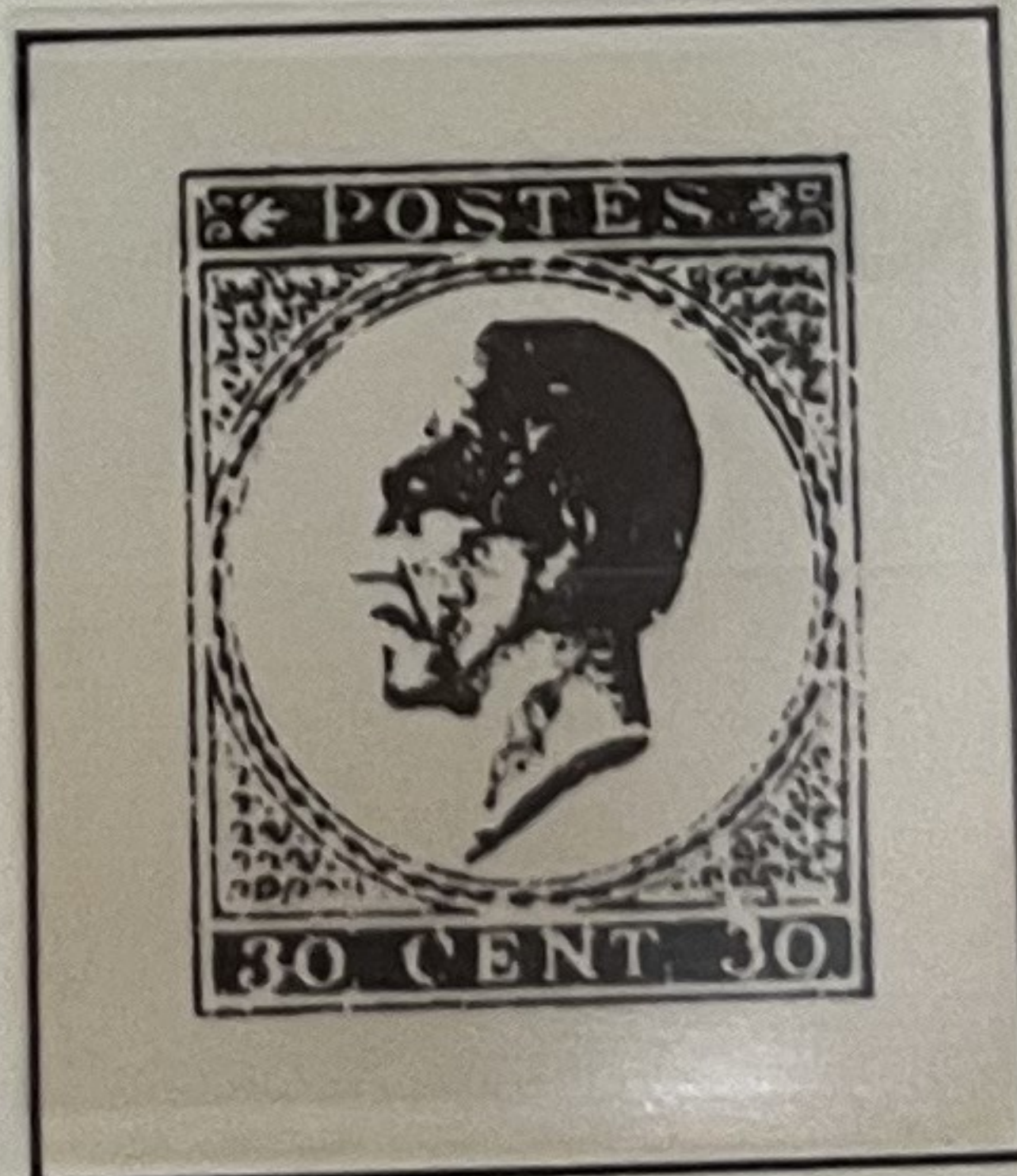
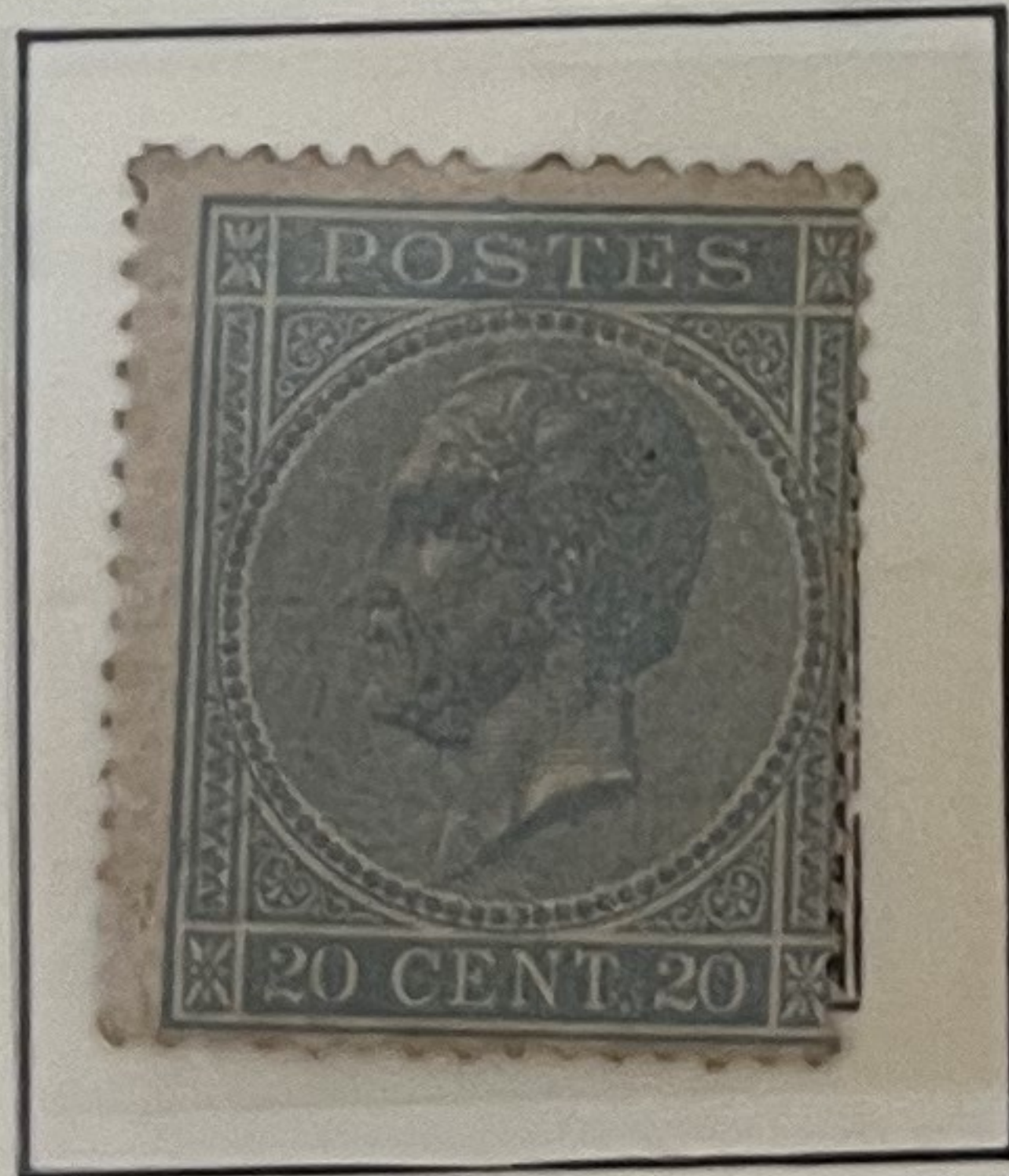
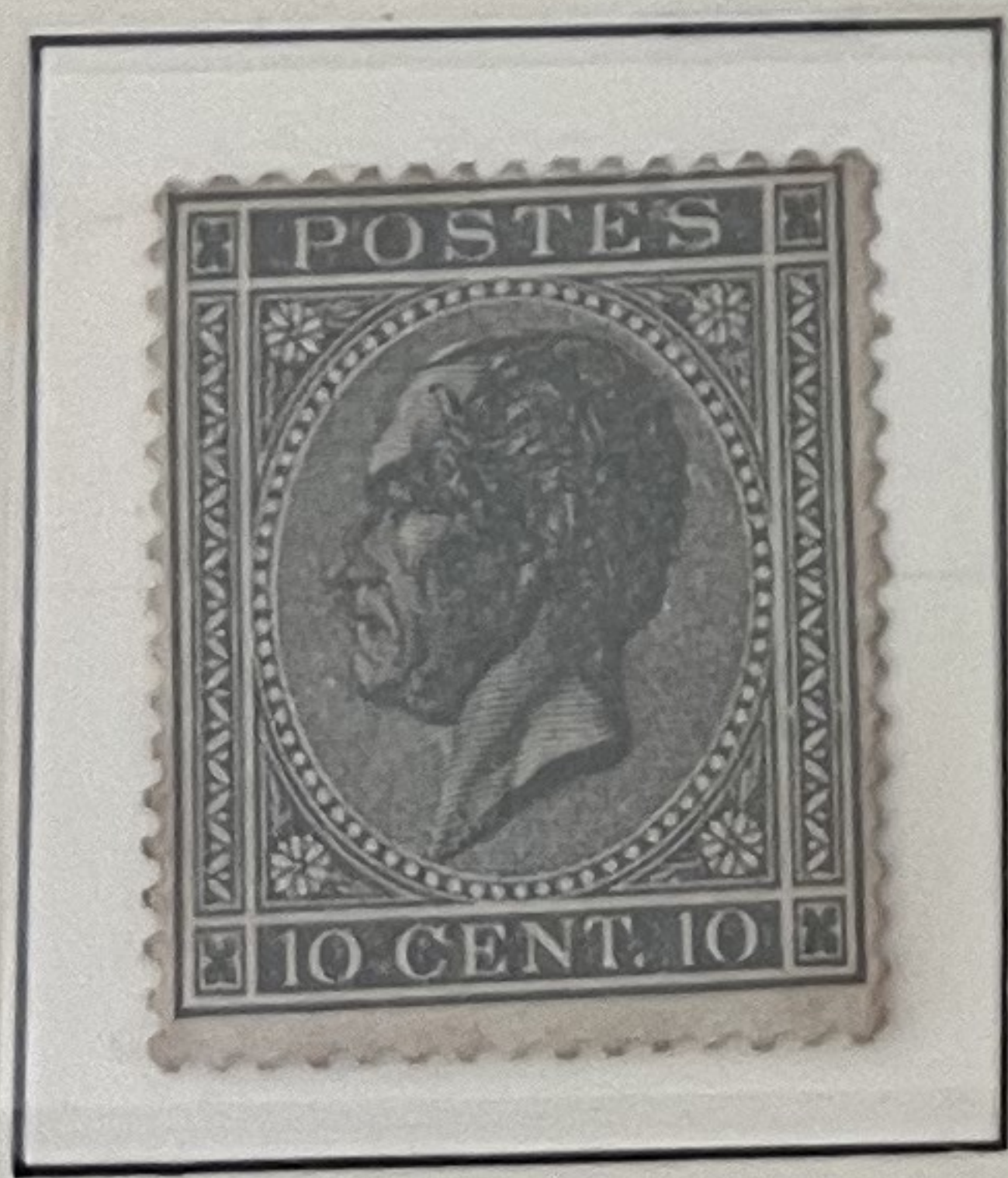


20
VINGT
CENT(imes)
blau
blue
bleu



450-

1865/66 ~



thin spot 290-

861 1700-

1866 —



250-

240

1866/67 ~

BELGIEN / BELGIUM / BELGIQUE / BELGIE

1869/70 ~



163

1869/78 ~



532

212

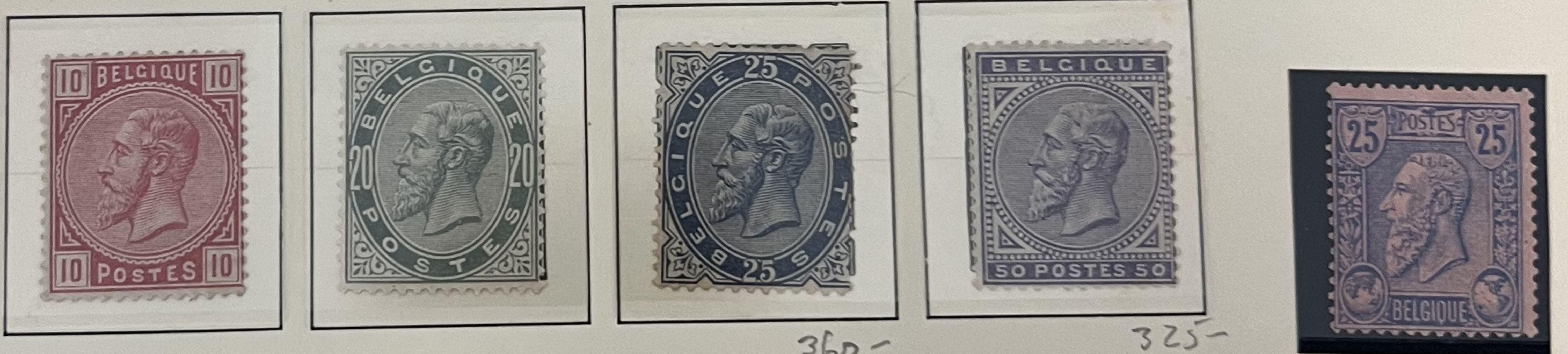
1450-

27-

400

39a

1883 ~



360-

325-

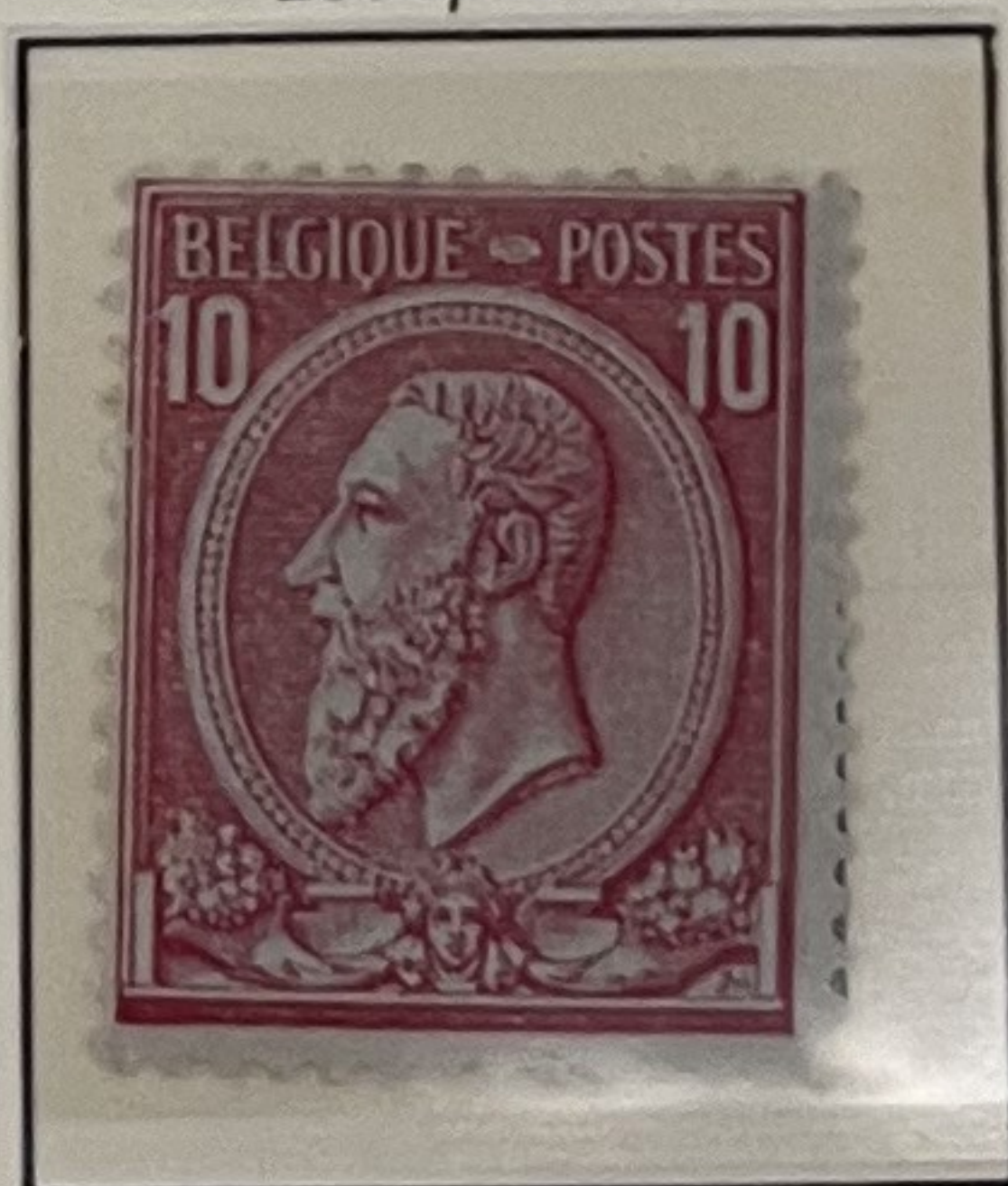
1884/88 ~



NH

NH

1884/91 ~



1884/88 ~



NH

NH 110-



250-

4259-

BELGIEN / BELGIUM / BELGIQUE / BELGIE

1893/94 ~



1894 ~



1896/97 ~



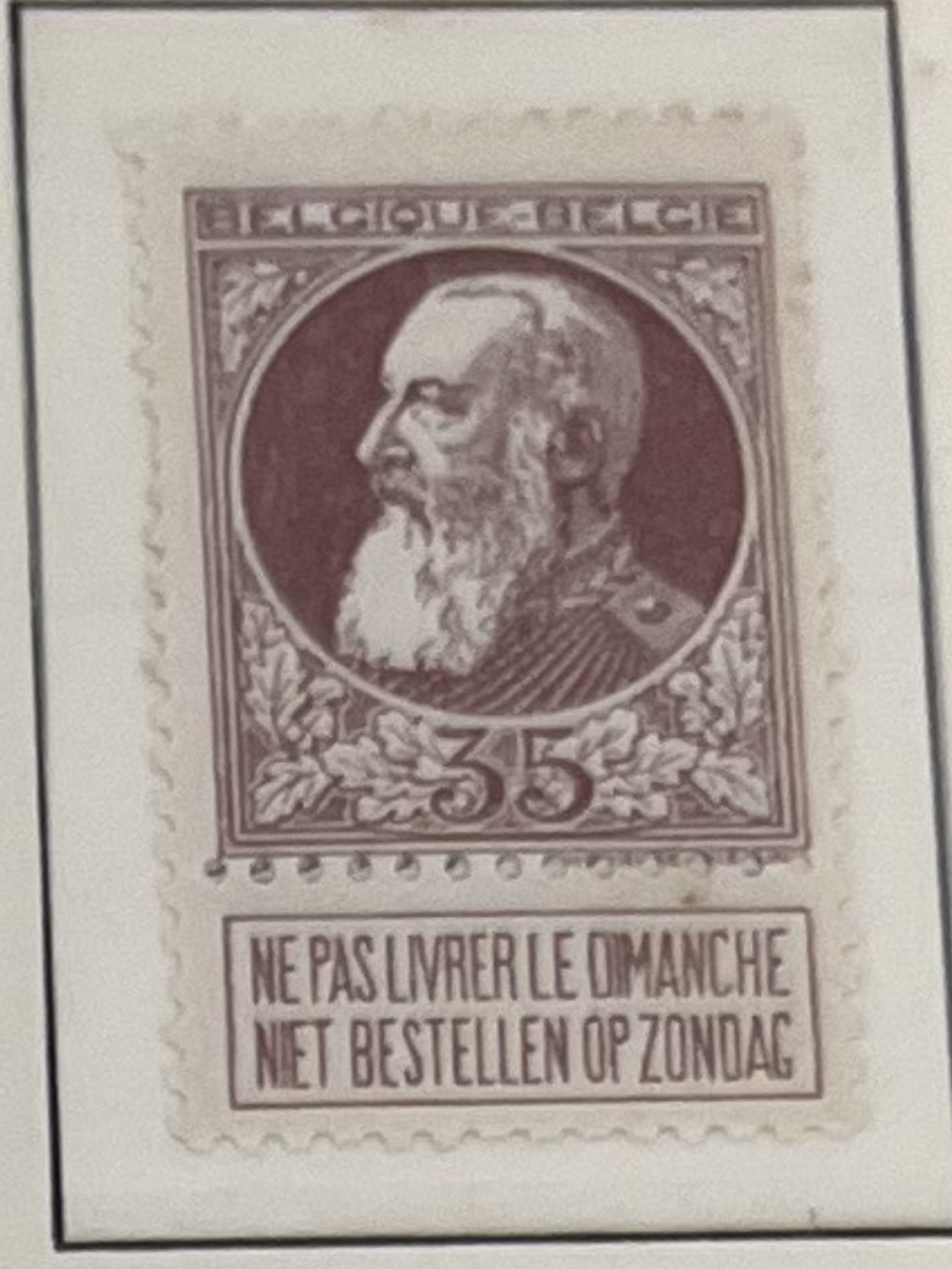
1898/1904 ~



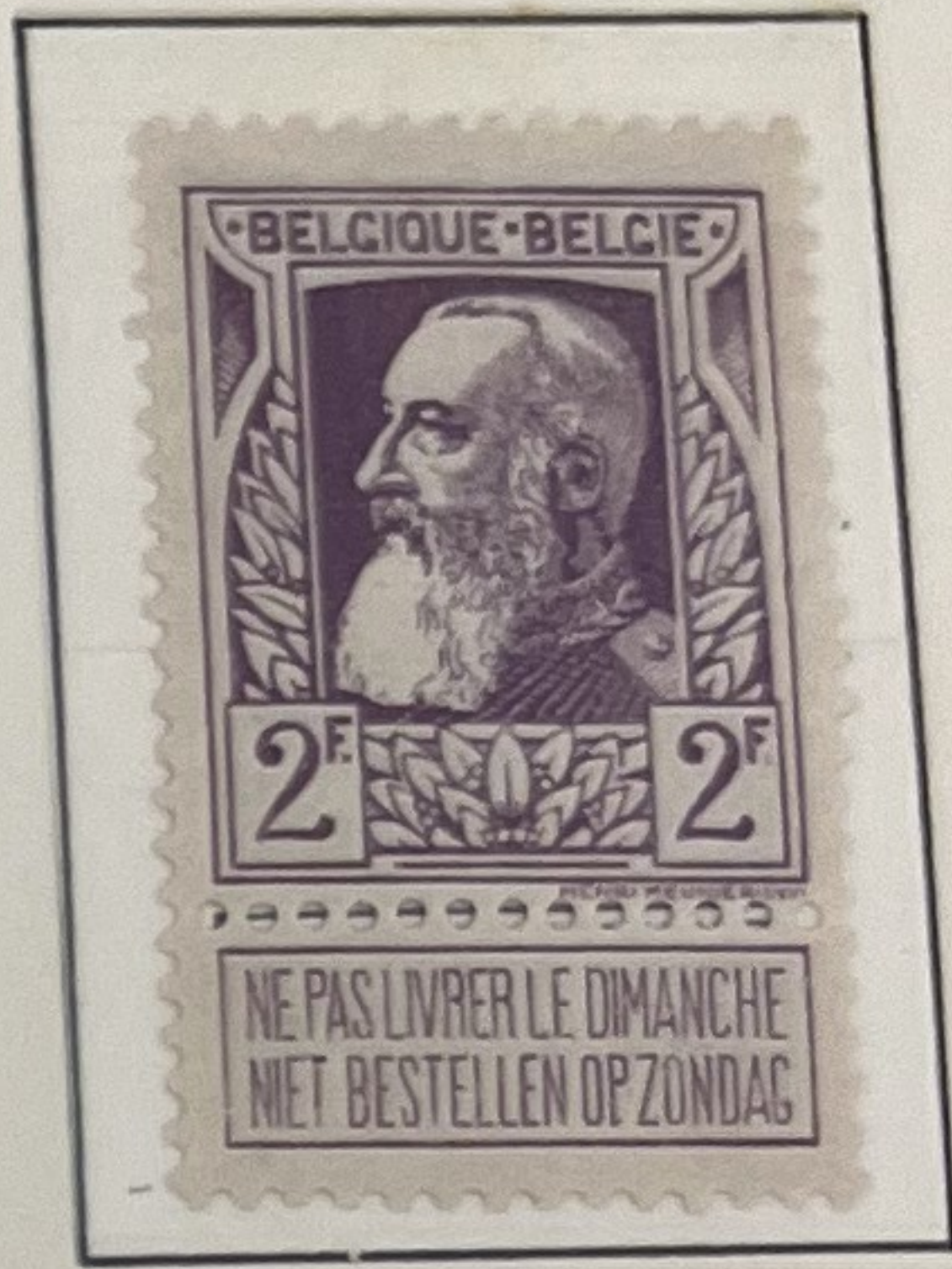
5et
608

BELGIEN / BELGIUM / BELGIQUE / BELGIE

1905 ~



1907/08 ~



372

1910 ~



1910 I ~



23

BELGIEN / BELGIUM / BELGIQUE / BELGIE

1911 ~ (x)



267-



71-

St. Martin de Tours Dividing His CLOAK
with A BEGGAR.

Surtax Benefited the National Anti-TB Organization

4*

BELGIEN / BELGIUM / BELGIQUE / BELGIE

1912 ~ Lion of Belgium



nm

nm

1912/13 ~

1912/13 ~



13

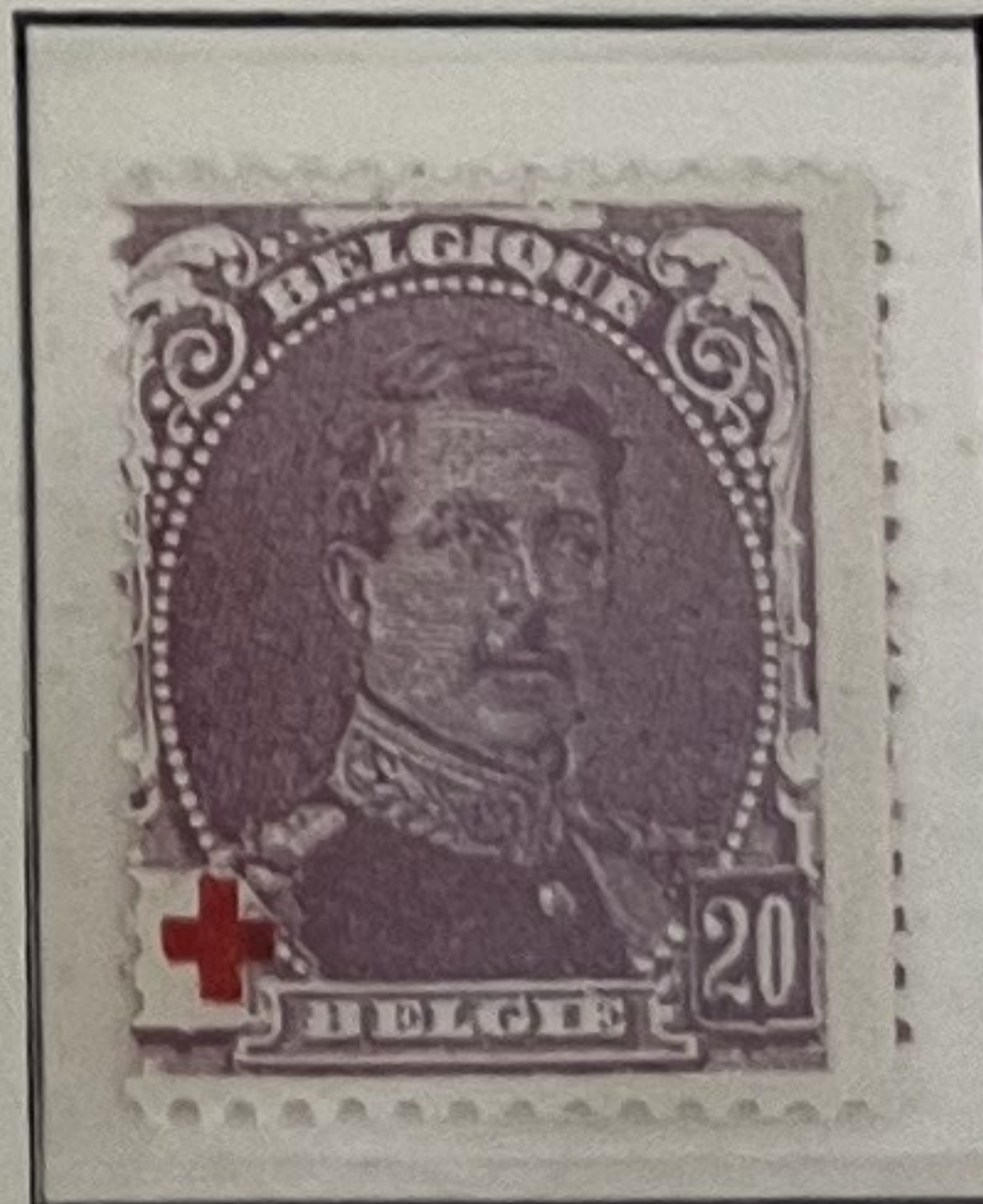
1914 ~

King Albert I

1915 ~



1914 I ~



Merode Monument

296-

BELGIEN / BELGIUM / BELGIQUE / BELGIE

1915/22 ~



franken 275-

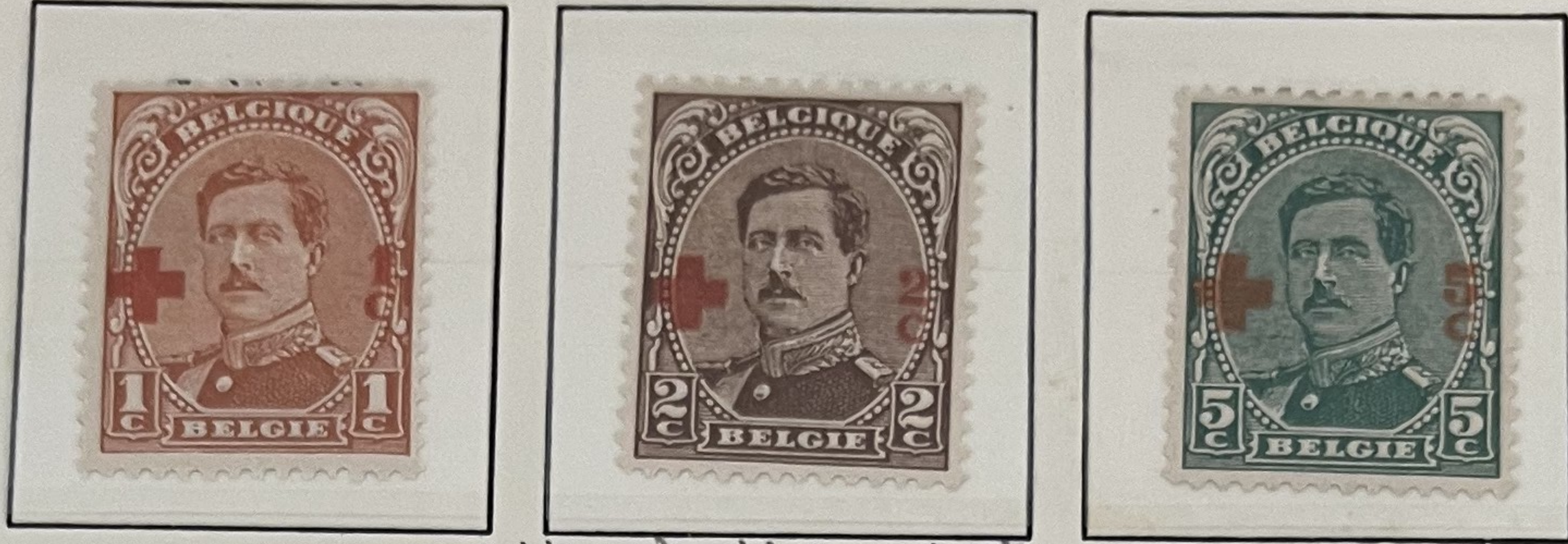
franken 275
1921 ~ (x) Leopold I, Albert I, Leopold II



town Hall at Termonde. NH.

BELGIEN / BELGIUM / BELGIQUE / BELGIE

1918 ~*)



Albert the 1st



Cloth Hall of Ypres



Bridge of Dinant



Library of Louvain



Scheldt River- Antwerp



Anti-slavery Campaign in Congo



King Albert I AK FOMES



990-

BELGIEN / BELGIUM / BELGIQUE / BELGIE

1919 ~

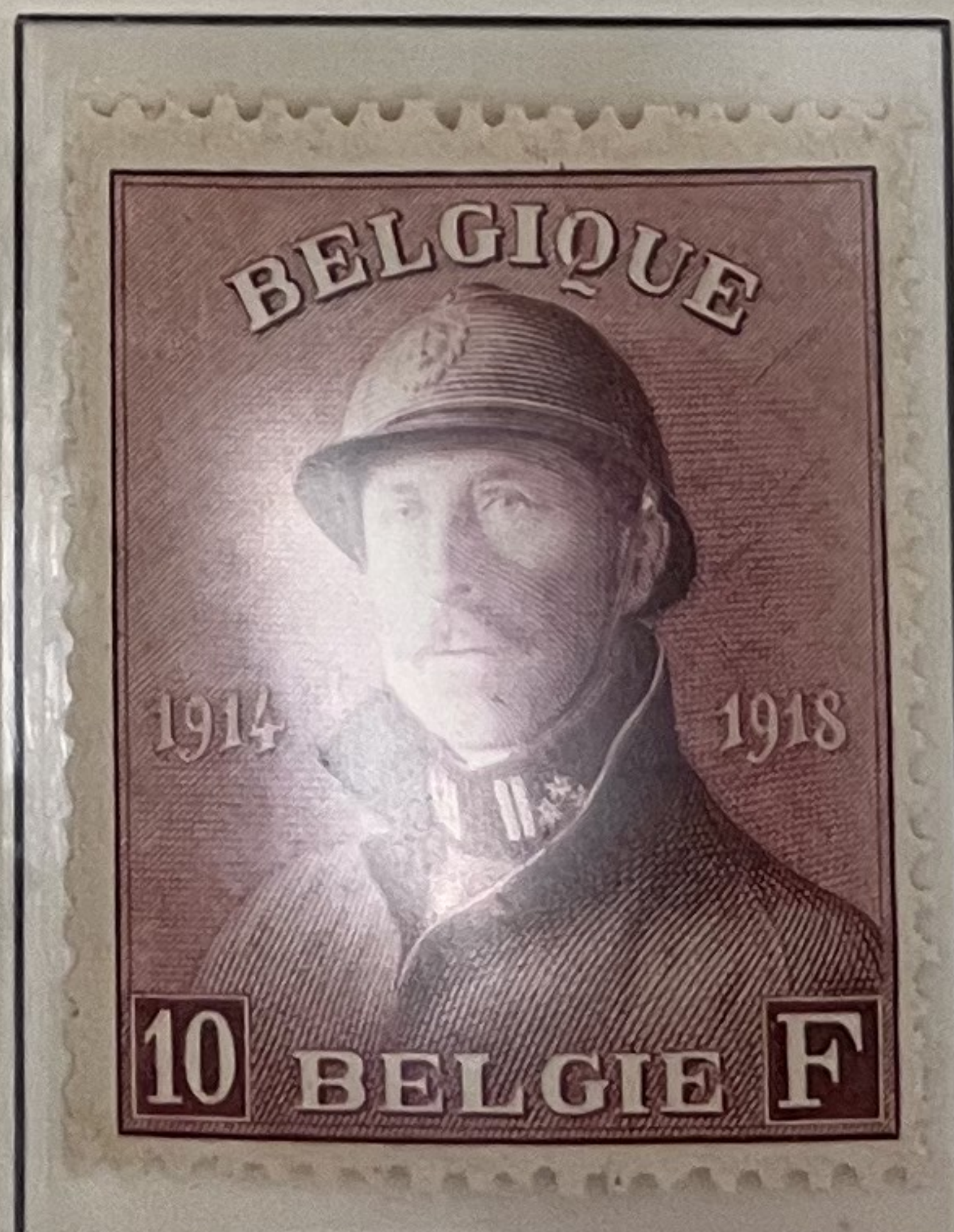
1919/20 ~



1919/20 ~



NK



F 1, 2, 5, 10 F.

(NH)

King Albert in Trench Helmet

BELGIEN / BELGIUM / BELGIQUE / BELGIE

1920 ~



1921 ~ (x)



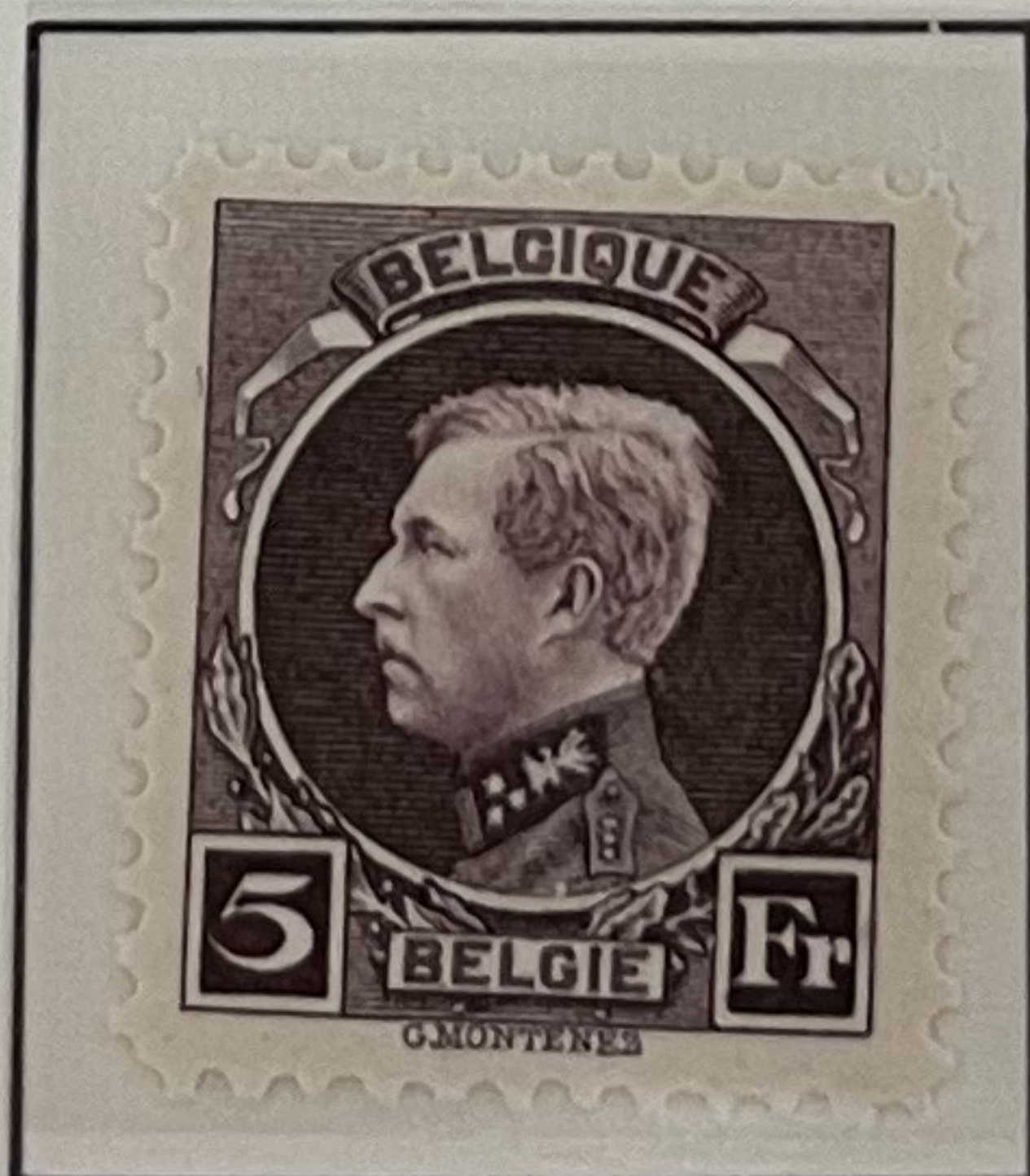
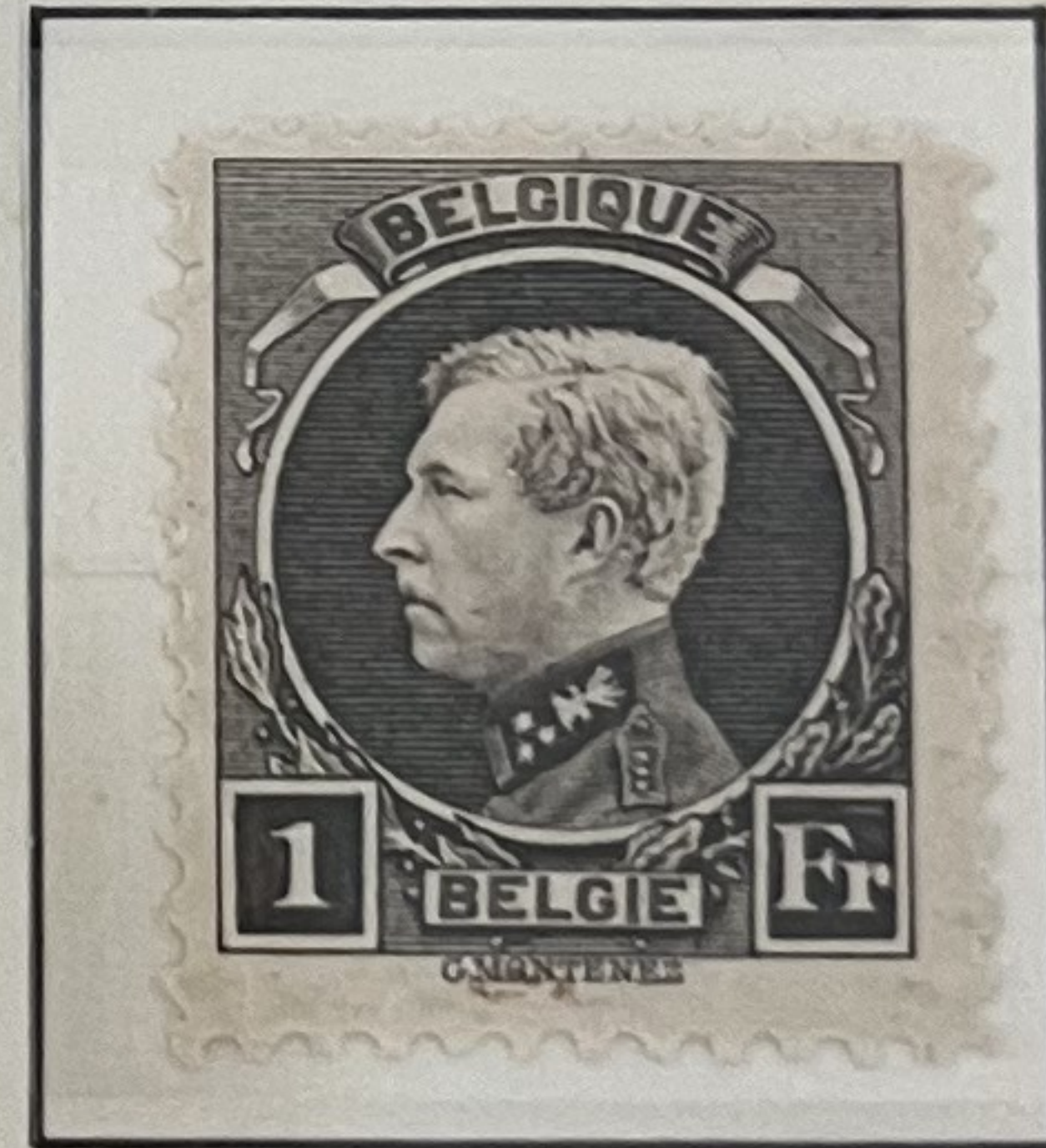
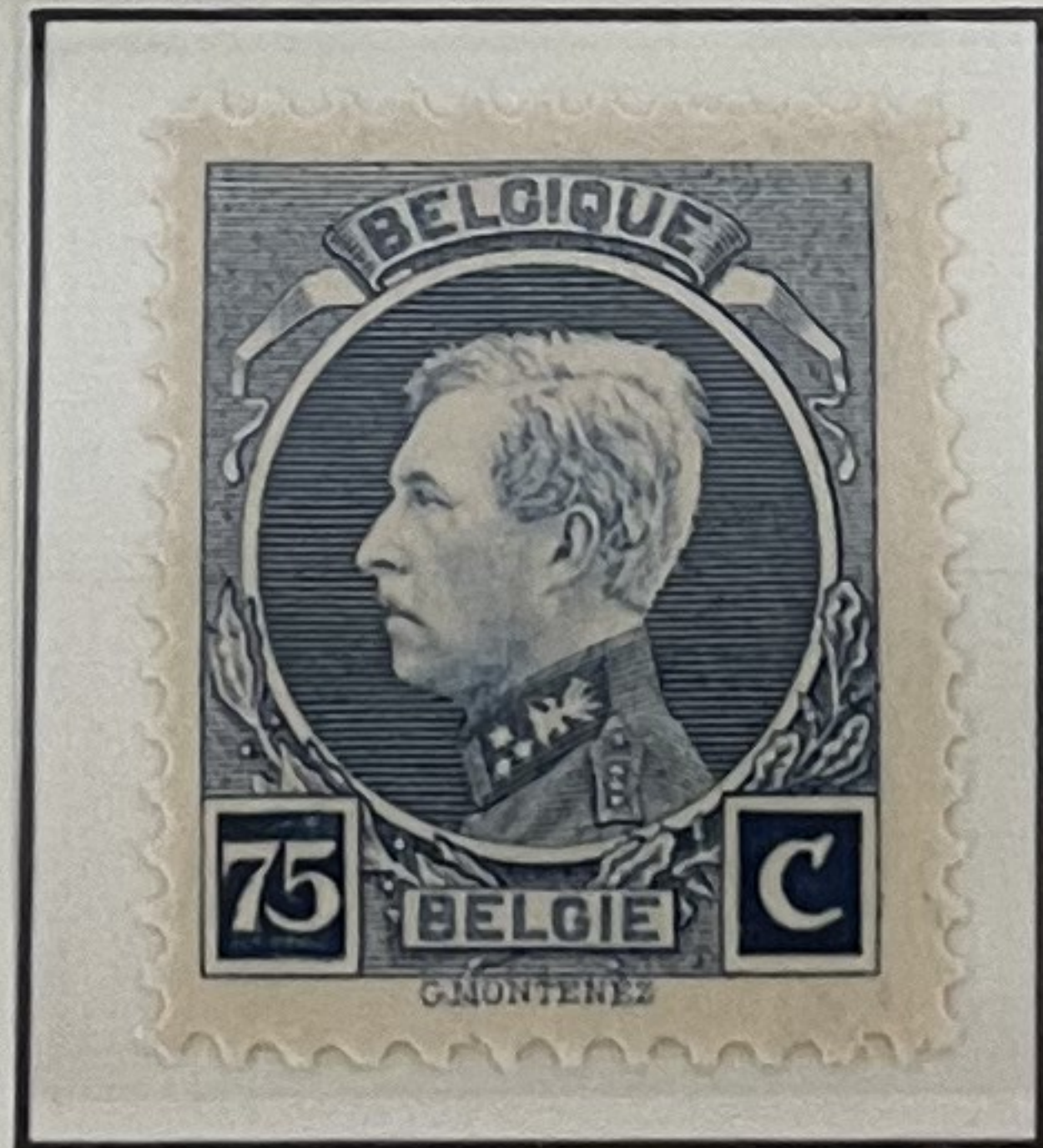
1921 ~

T. 1921/25
50 C
(Centimes)
dunkel-ultramarin
dark ultramarine
outremer foncé

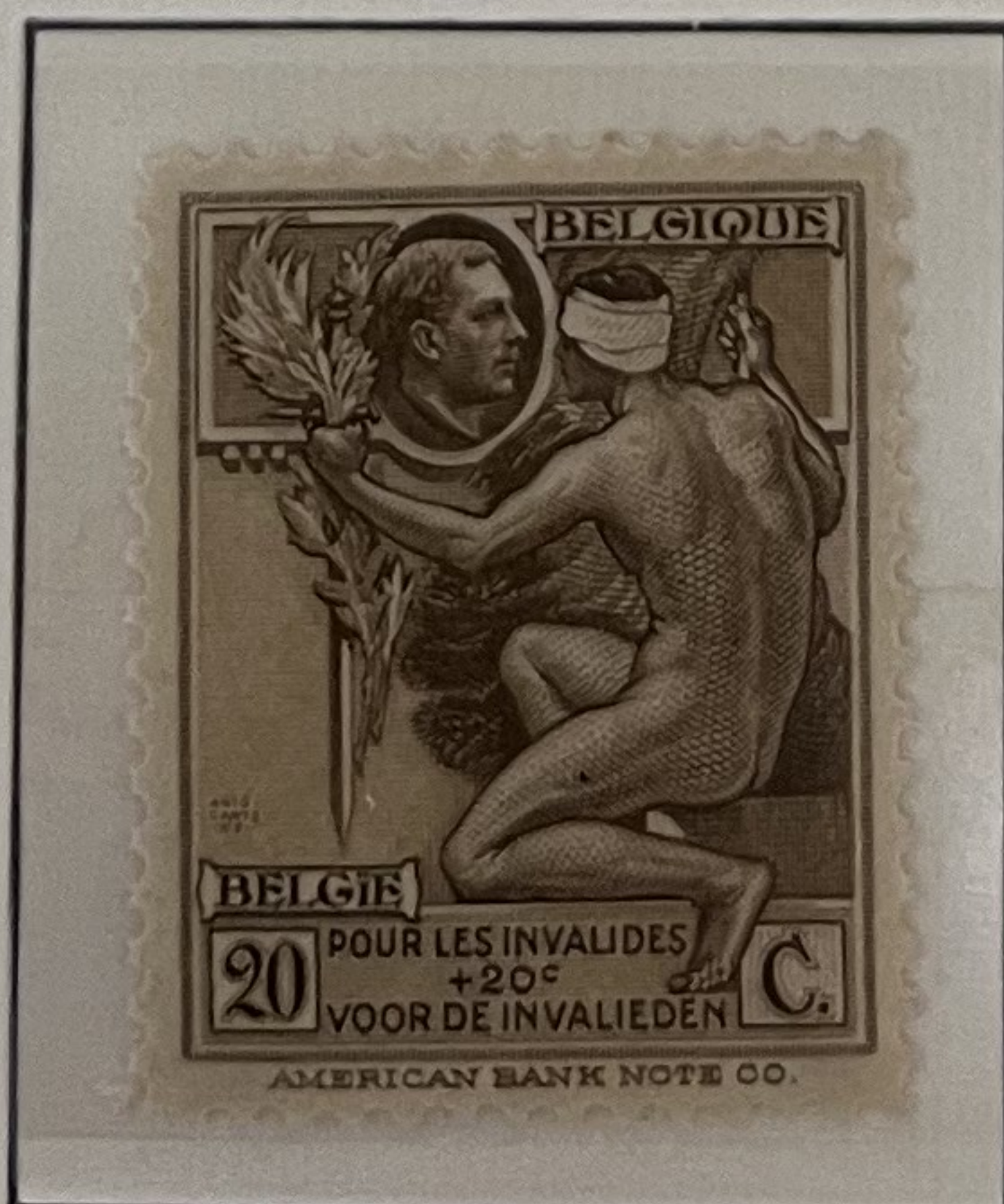


7th Olympic Game.

1921/25 ~



1922 ~



1923 ~



Allegory. 65ff
Adkins Alms Erms Crown

wounded Veteran

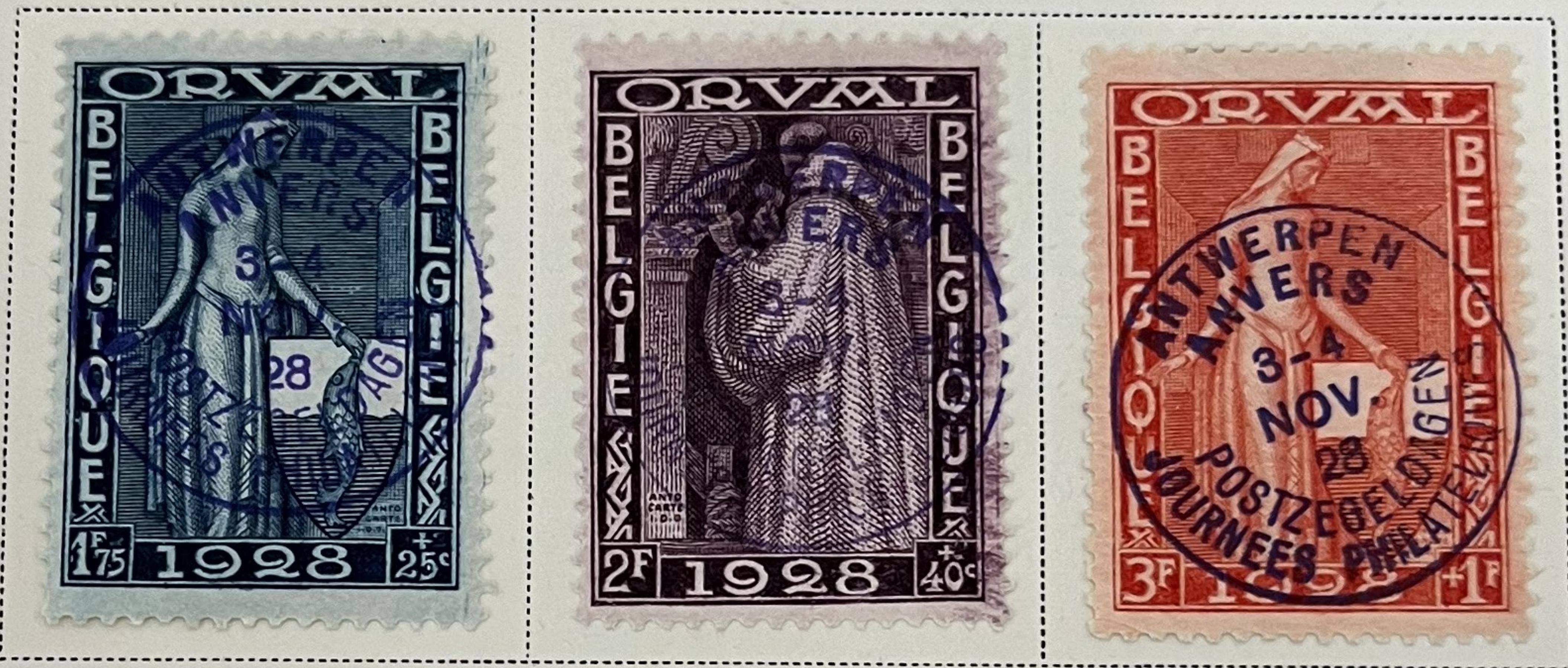
25ff

BELGIUM

SEMI-POSTAL STAMPS

Unwatermarked

1928



Mick E 1700 -
fr NH

BELGIEN / BELGIUM / BELGIQUE / BELGIE

1929 ~ (x)'



1929 ~



152-

1929 I ~



NH

60-

town of Brussels

Eupen

1929 II ~



stream at Coo

Menin Gate

Ypres

Antwerp Harbor



Beward Rock-Dinant

Quai Vert, Brussels

58-

262-

BELGIEN / BELGIUM / BELGIQUE / BELGIE

1930 ~

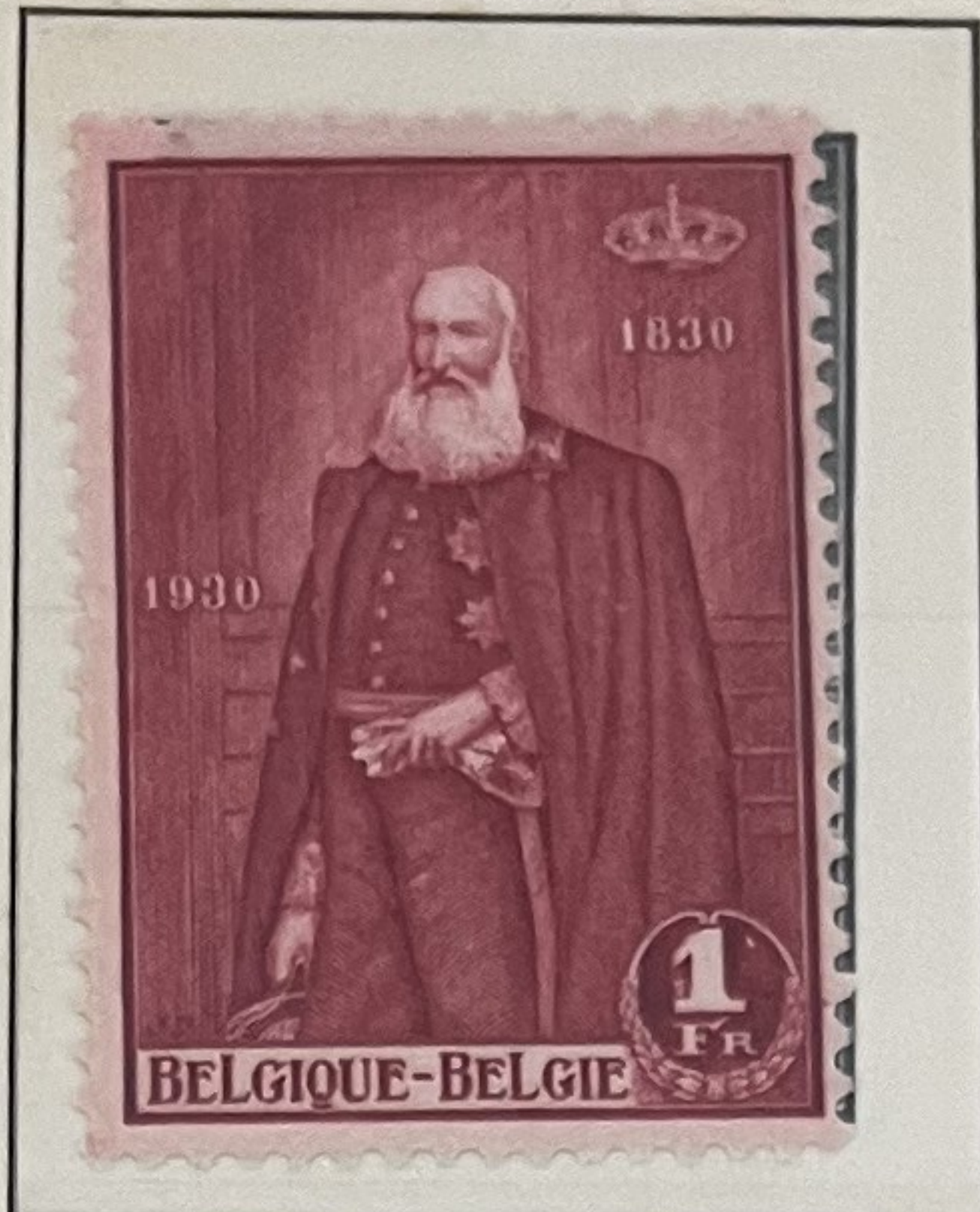


Peter Paul Rubens

1930 III ~



Leopold I
Belgium →

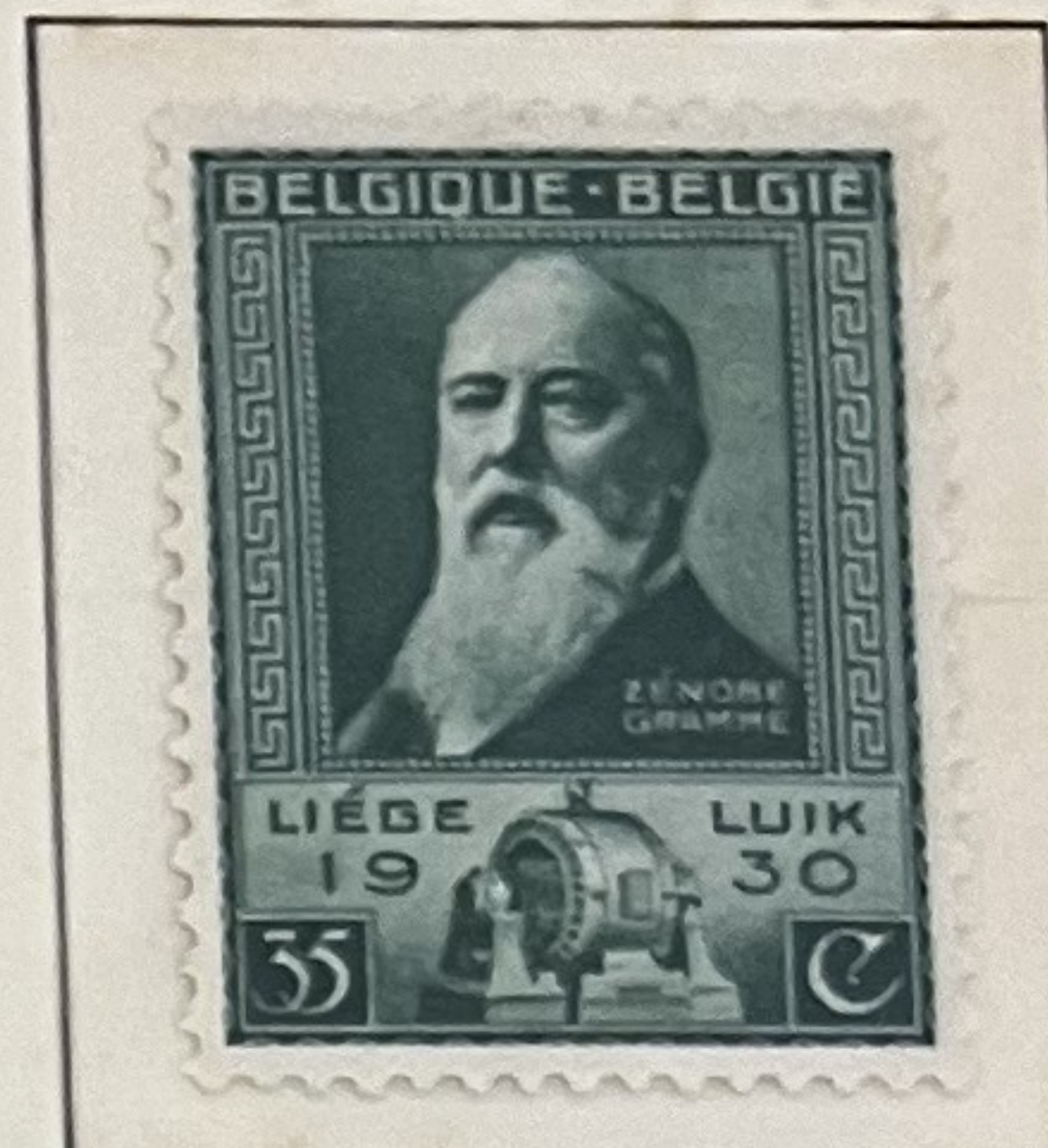


Leopold II
1930 IV ~



Leopold II not
→ Independence

1930 I ~



Zenobe Gramme



Bornhem



Wynendale



Gaesbeek



Bevoert



Dydomek

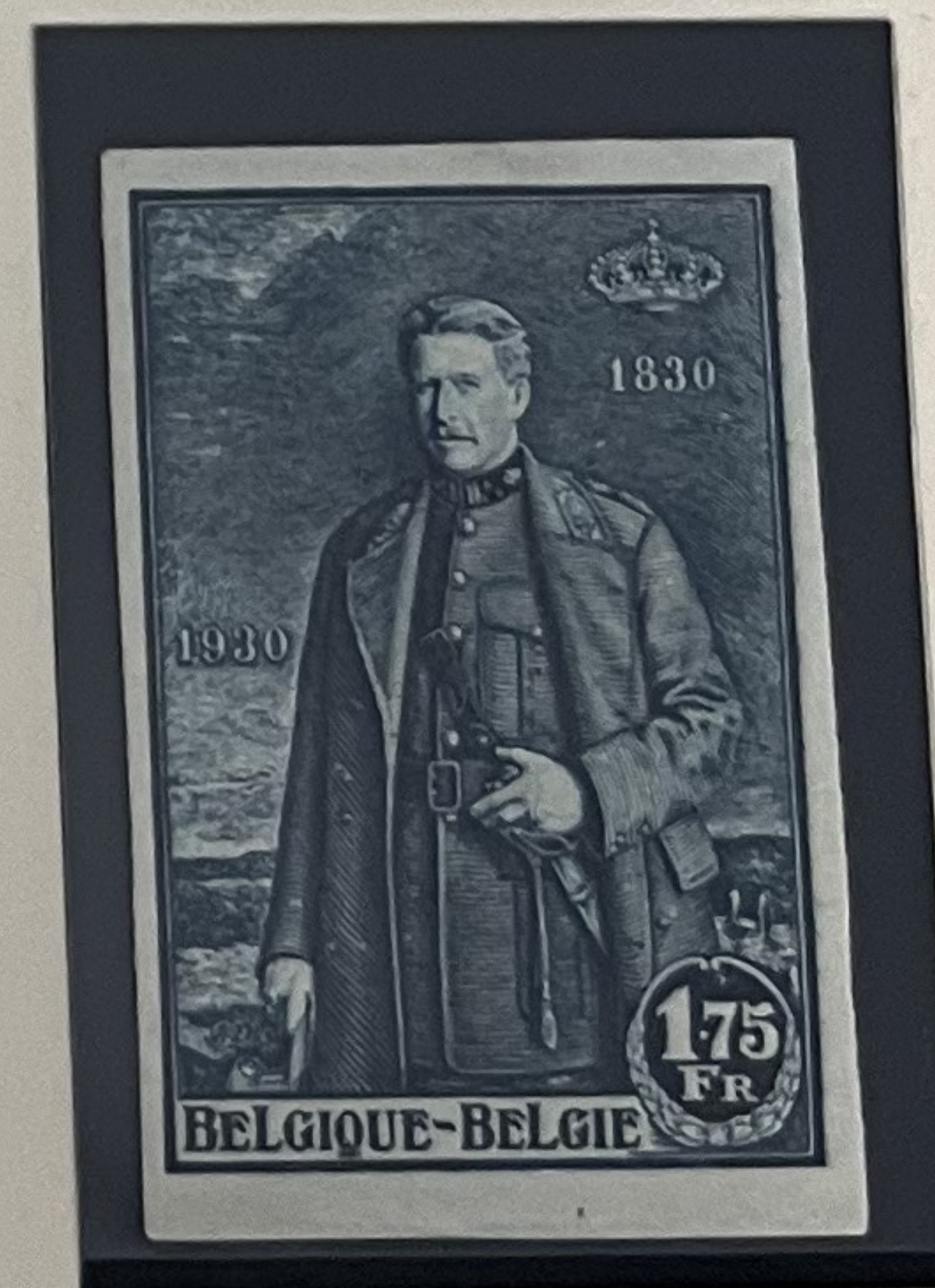
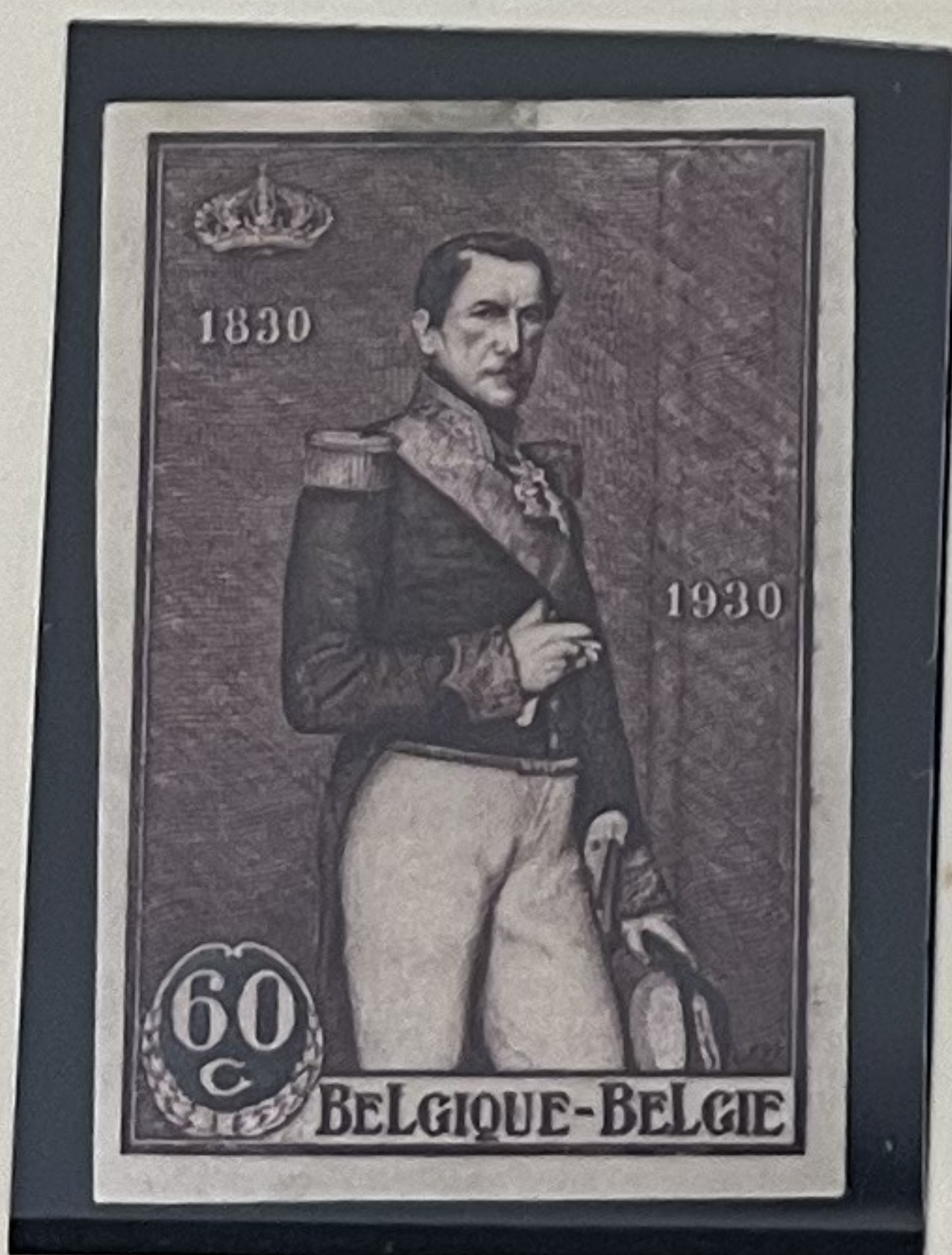
1930 II ~



Ghent

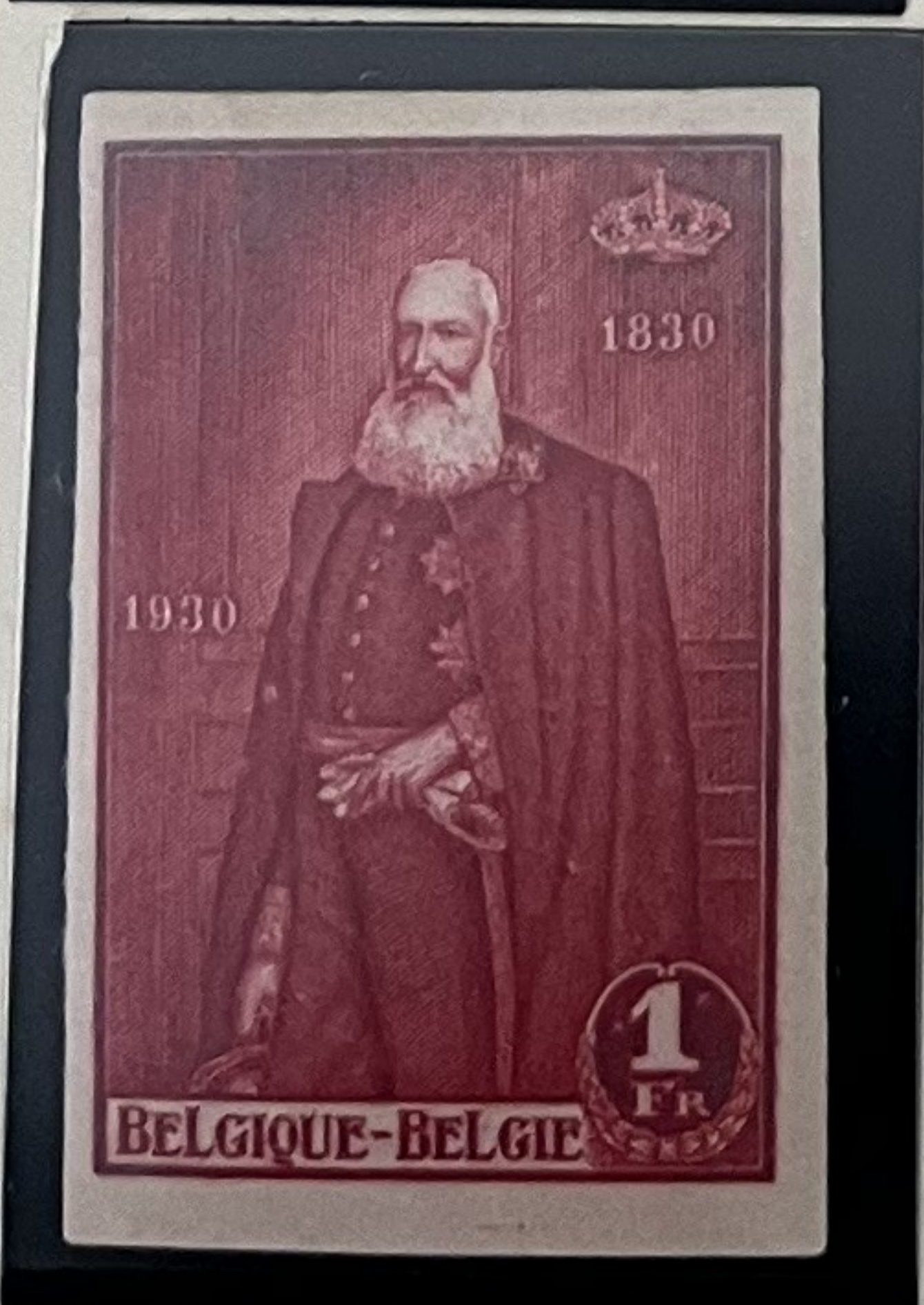


Bouillon



IMPERF Et 400-

1930 ~



526-

BELGIEN / BELGIUM / BELGIQUE / BELGIE

1930 ~ (x)



Queen

1931 I ~

Elisabeth



1931 ~ (x) 1



1931 ~ (x)



1931 ~

1932 ~ (x)



N11

42

EUPEN.

N14

60-

BELGIEN / BELGIUM / BELGIQUE / BELGIE

1931 ~ (x)



1931/32 ~



1932 I ~



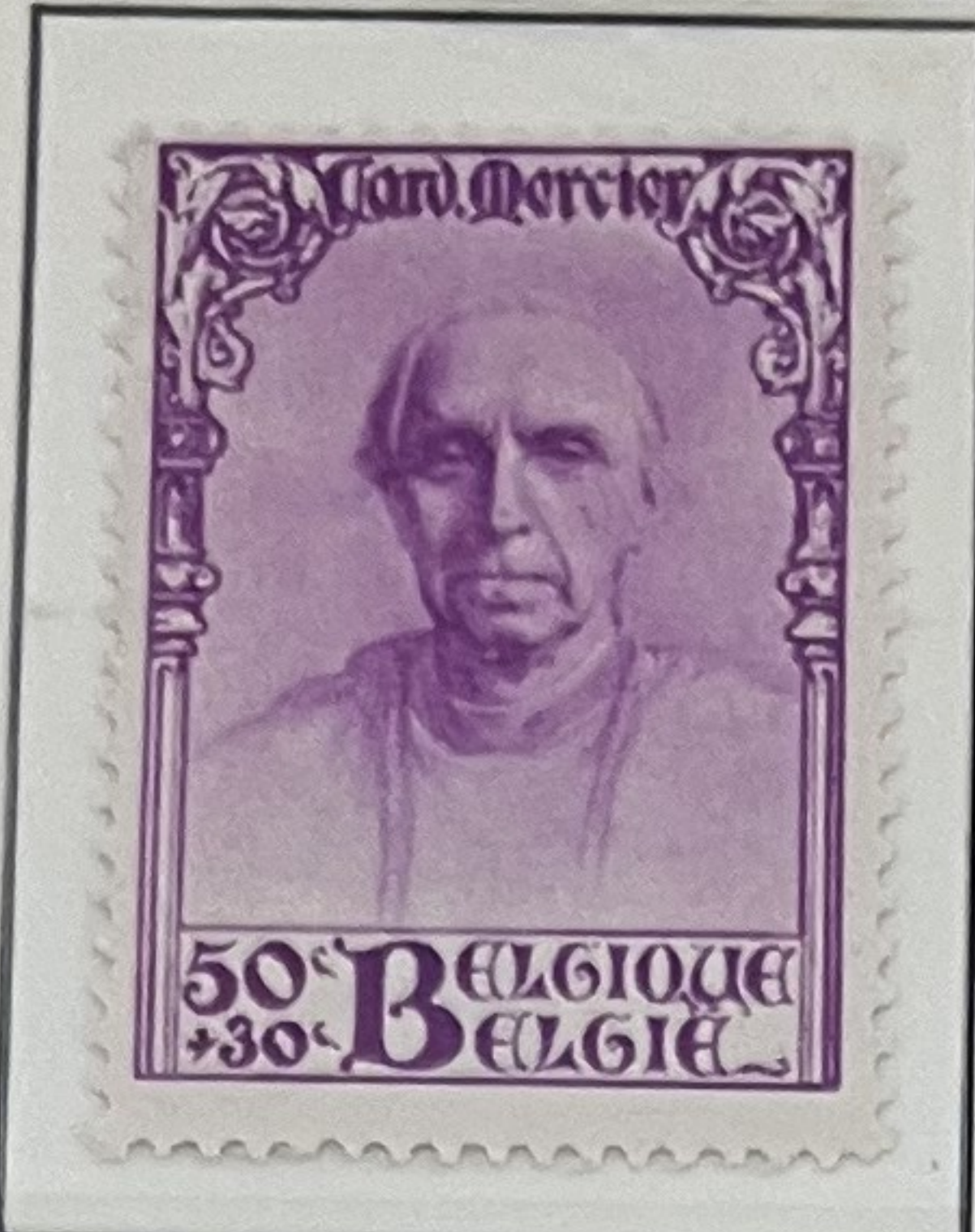
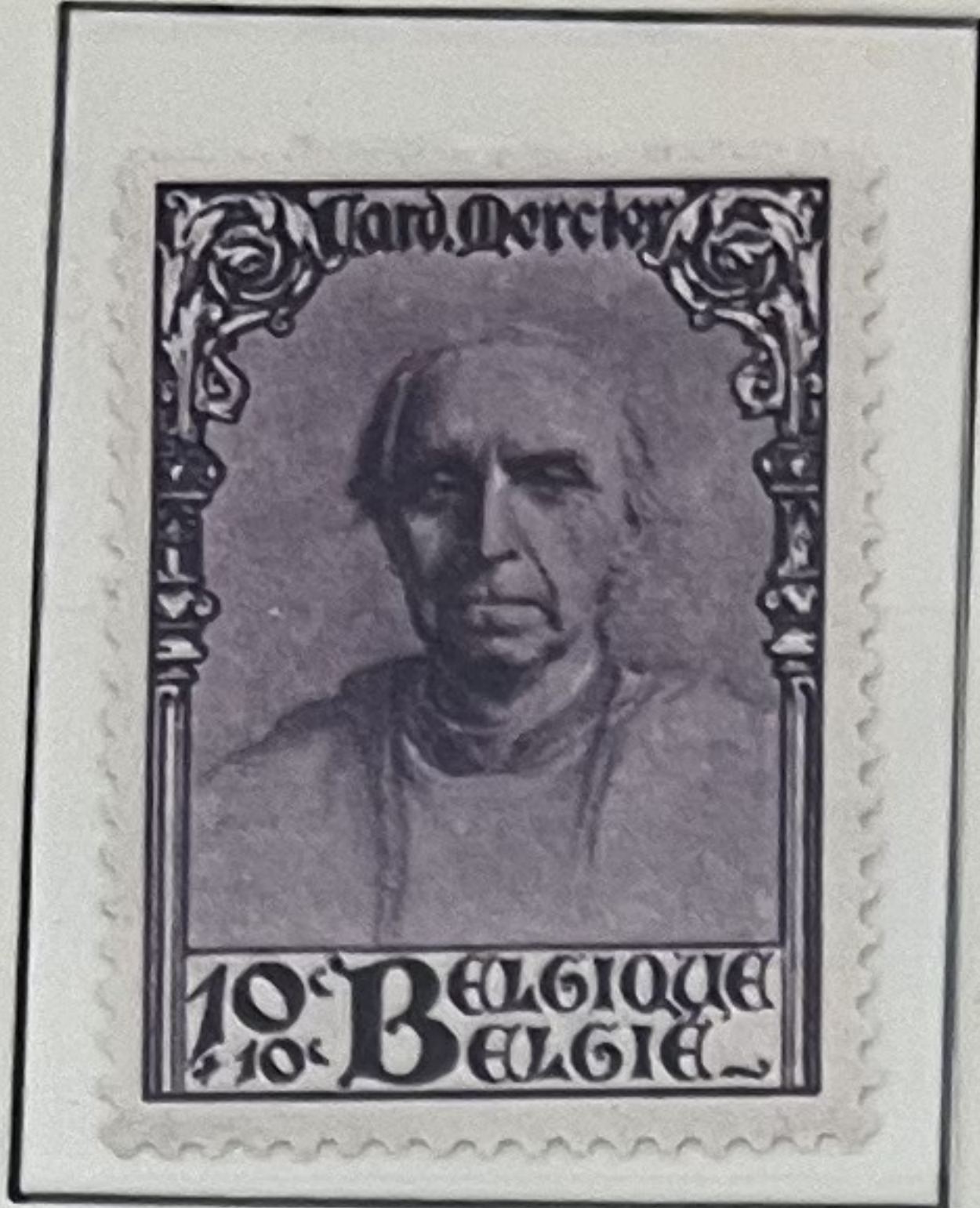
1932 ~



255-

BELGIEN / BELGIUM / BELGIQUE / BELGIE

1932 II ~



Desire Cardinal Mercier



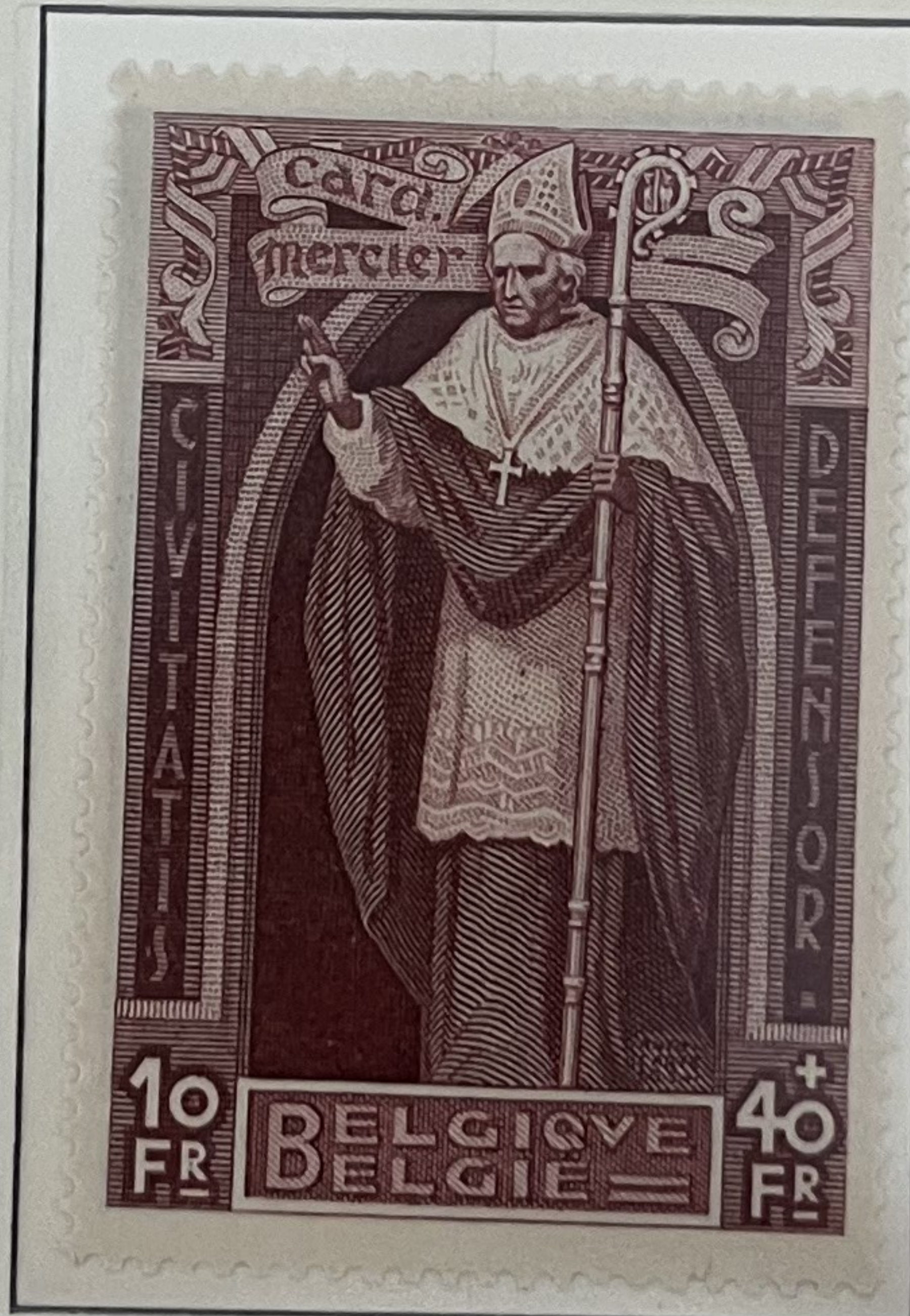
Mercier Protecting children & aged. NH

Mercier as Professor at Louvain U. NH

1932 III ~



Belgian Infantryman



Mercier th full Canonicate NH

1932 III ~



(NH) set 250

1932 IV ~



Auguste Piccard's Balloon

41

BELGIUM

SEMI-POSTAL STAMPS

Unwatermarked

1932



Michel E 4400
- for NH

1932



BELGIEN / BELGIUM / BELGIQUE / BELGIE

1932 V ~



Sanatorium a + water 100.



1933 I ~

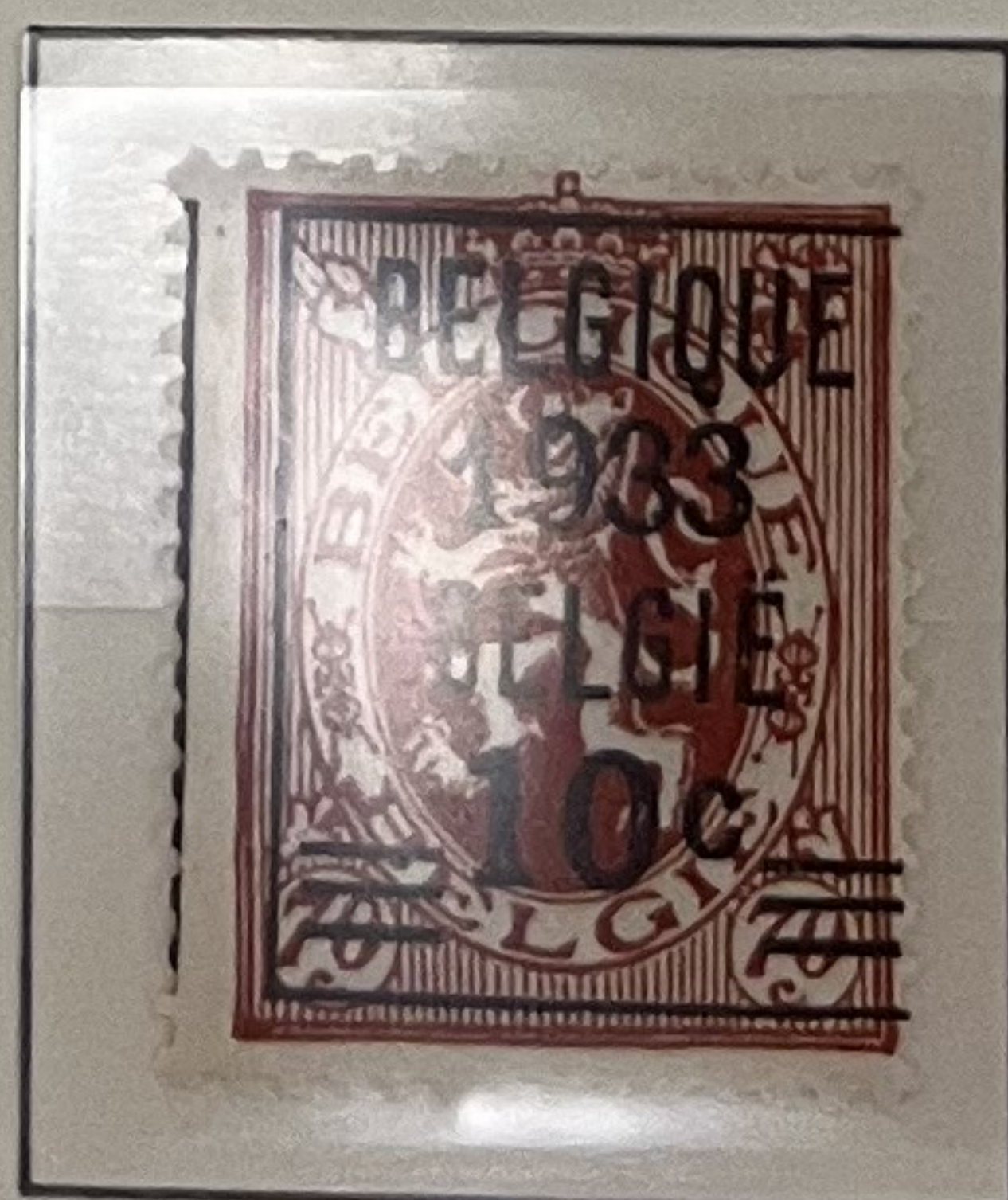
130-



1 B Society

1933 ~ (x)

240-



BELGIEN / BELGIUM / BELGIQUE / BELGIE

1933 ~



View of Old Abbey



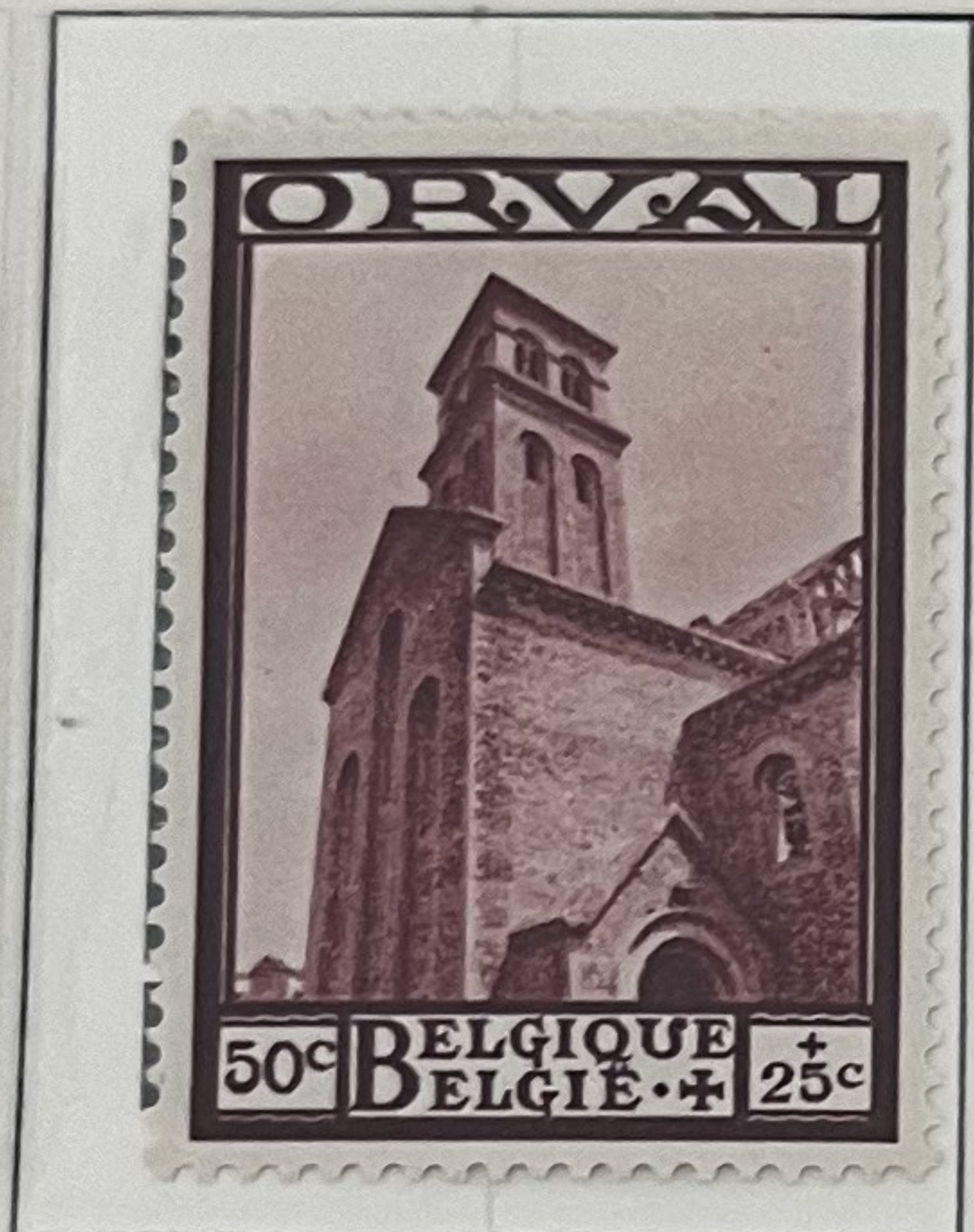
Streets of Orval



Cloisters



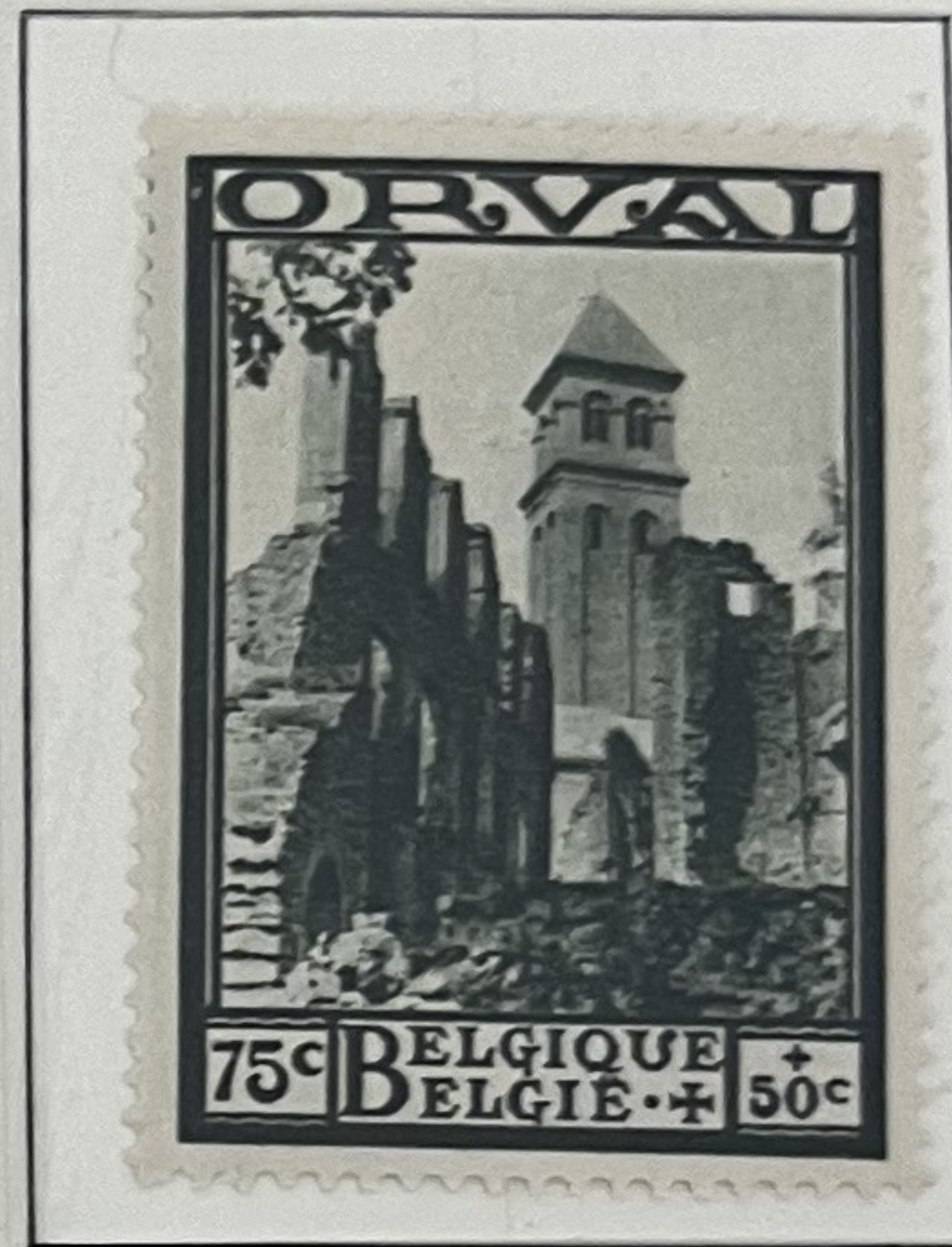
Ruins of Old Abbey



Transept



Madonna and Arms of Seven Abbeys



Bell Tower



Fountain



Cloisters



Restoration of Abbey in XVII & XVIII



Abbey in XVIII Century



Duke of Brabant Placing 1st Stone of New Abbey

BELGIEN / BELGIUM / BELGIQUE / BELGIE

1934 I ~

1934 ~ (x)



1934 ~



Peter Benoit

1934 II ~



NH 50-

1934 IV ~



Crusaders

151-

1934 III ~



KING LEOPOLD II

204-

BELGIEN / BELGIUM / BELGIQUE / BELGIE

1935 ~



989

BELGIEN / BELGIUM / BELGIQUE / BELGIE

1949 ~



1949 ~

244 -

Elektr. Lokomotive
Electr. locomotive
Locomotive élect.

60
F(ranca)
schiefer
slate
ardoise

BELGIEN / BELGIUM / BELGIQUE / BELGIE

1960 ~~~



1968 ~~~

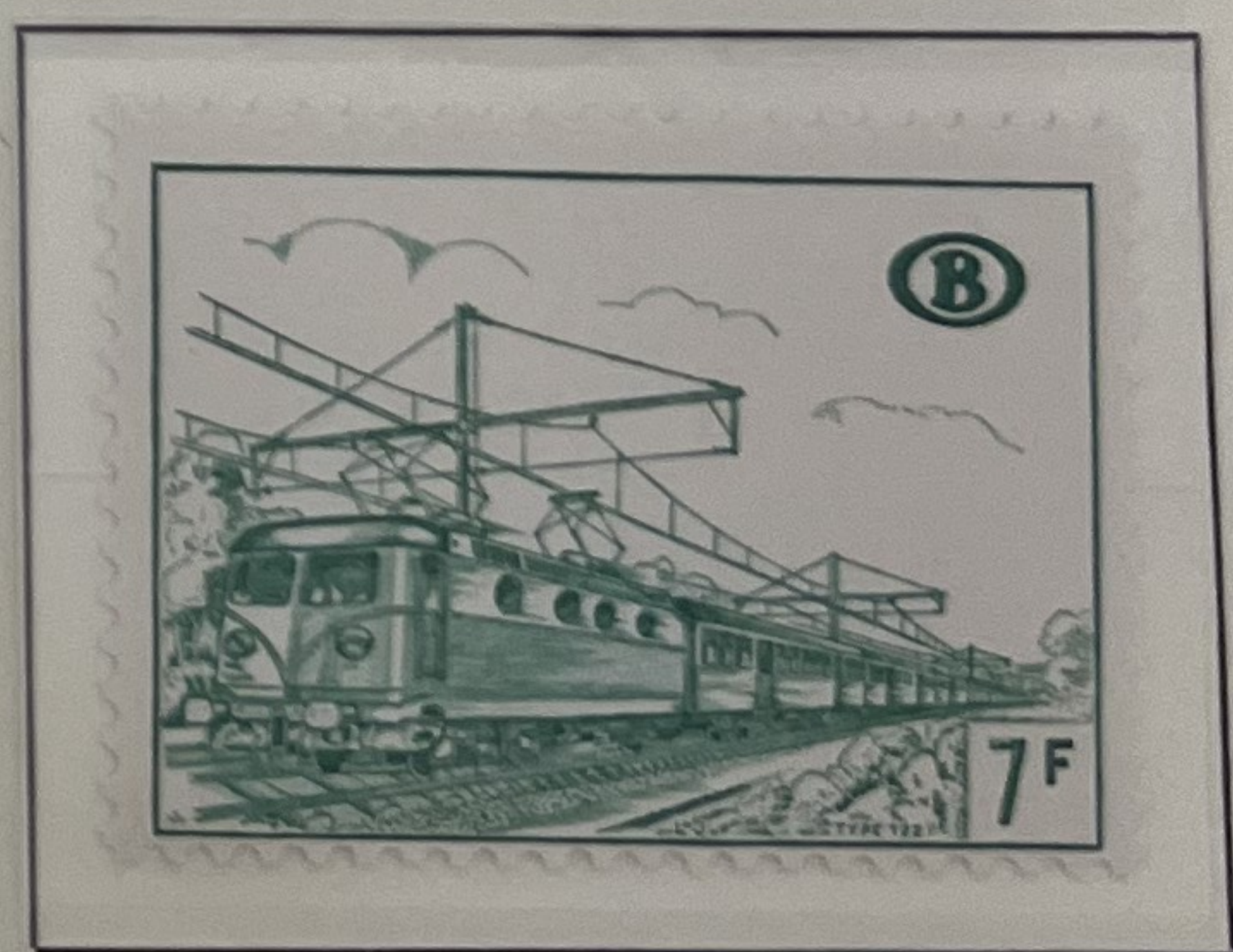
T. 1953/56
5 F. lilabr.



10
F(rancs)
braunschwarz
brown black
noir-brun

160-

1968 ~~~



165

BELGIEN / BELGIUM / BELGIQUE / BELGIE

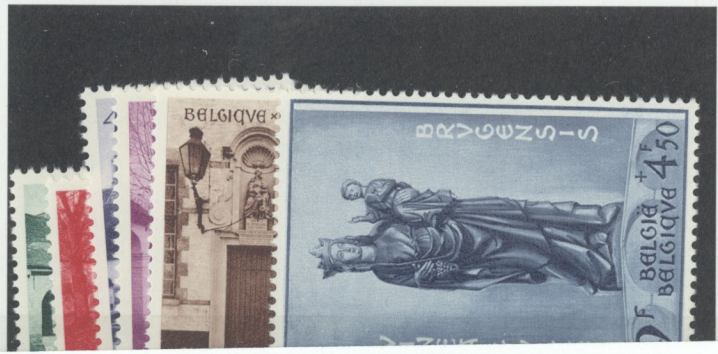
1949



Q7,8,10,11,13,15 459- Price



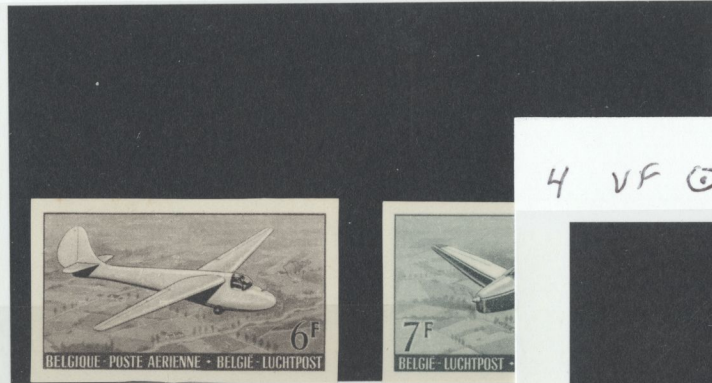
B561-6 VF * (NH) 175- Price 175-



VF * (NH) Price 70⁵⁰



C13-14 IMPF NGAI Est 200- Price



Style No. GK 102BK

4 VF (NH) 62⁵⁰ Price 62⁵⁰



Q129-31 VF * 790- Price 790-



Style No. GK 102BK

VF * (NH) 175- Price 175-



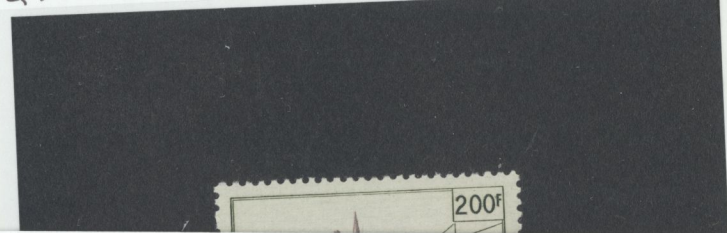
GK 102BK

2012-11c VF * Price 63- 173- Price



B477-9 VF * (NH) 250-

Q341 VF * (NH) Price 250-



B558-60 (NH) VF * 88561 500+



Q79-80 * 90- Price



294-301 VF * 54- Price 121⁸⁰ Price 121⁸⁰



Style No. GK 102BK

GK 102BK

Style No. GK 102BK

Style No. GK 107BK

3514 VF * (NH) 140 - Price



Style No. GK 102BK

VF (NH) 100 - Price



GK 102BK

4416-50 + 449a VF * (NH) 131 - Price



Style No. GK 102BK

B107-13 VF * (NH) 180 - Price 180 -



Style No. GK 102BK

B515-20 VF * (NH) 115 - Price 115 -



VF * (NH) 320 - Price



B156-64 VF * (NH) Price 550 -



VF (NH) Price 45 -



B523-30 VF * (NH) 79 - Price



VF * (NH) Price 65 -



B462-6 VF * (NH) Price 55 -



VF * (NH) Price 87 -



B538-43 VF * (NH) 90 - Price



B558-60 VF * (NH) 125 - Price 125 -



B495-7 VF * (NH) Price 68 -



VF * (NH) 65 - Price 65 -



Style No. GK 102BK

Style No. GK 102BK

Style No. GK 102BK

102BK

022A IMPERF * NLA I ESE 400- Price _____

DEPOT-1927

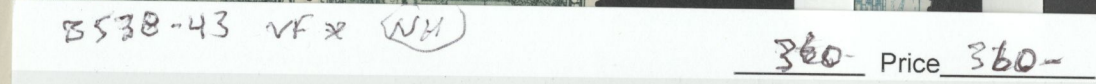
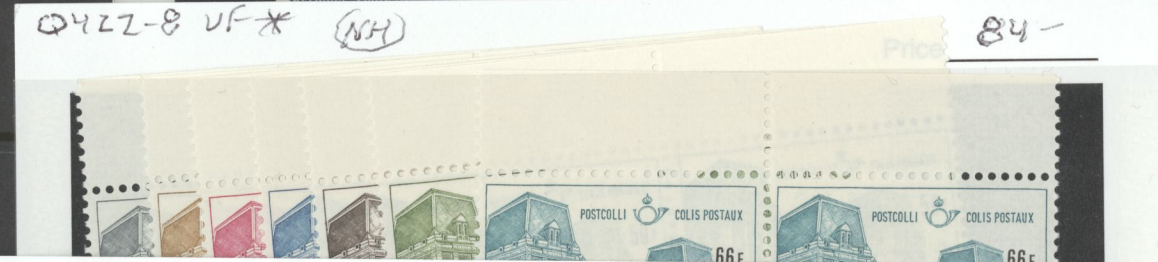


M13x



\$150

Belgium



Rare Whit pane 1912 (NH) \$1650-

DÉPÔT 1921

BRUXELLES-POSTZEGELTENTOOST
11-12-29
1921



BRUXELLES-POSTZEGELTENTOOST

BRUXELLES-POSTZEGELTENTOOST
24
V
14-15
1924



DEPOT 1924

2178 FDC cancel (NH) lot
993 OCEAN 340 for lot (OS)



BORGERHOUT
3-10-36 15
BRUXELLES-POSTZEGELTENTOOST

MONS
2 D
1 VI
9-10
1938



MONS
2 D
1 VI
9-10
1938

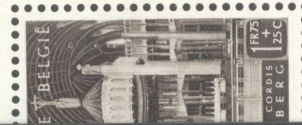
MONS
2 D
1 VI
9-10
1938

11 144 to 161 (over 157)

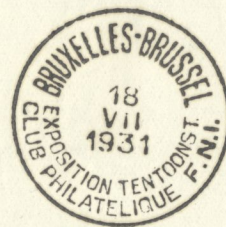
NH



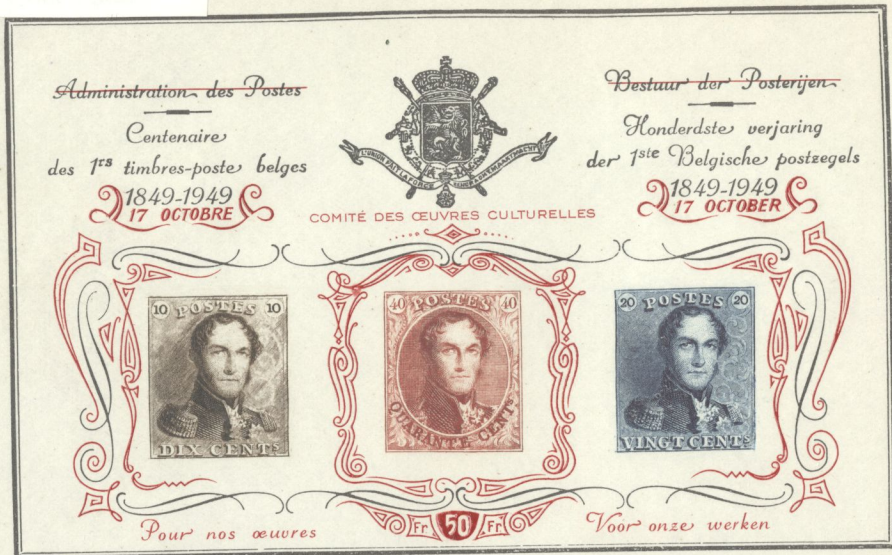
10-1951)



10-1951)



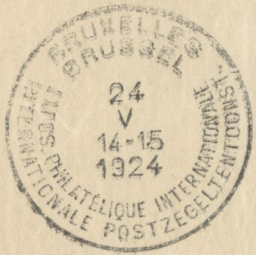
729 Michel note after 5B, 1949 official Postal Administration issue souvenir sheet with reproductions of #1, 2 and 5 for 100th anniversary of 1st postage stamps. (Bepitel), only 15,000 were printed and about 7500 were sold. AND the same S/S. with red "Comite Des Ceuvres Culturelles 50c." overprint and surcharge, only 5,000 were printed and far fewer sold. An extremely handsome and hard to find pair. LH., VF/EF. Fresh, un gummed as issue. MINIMUM BID \$125.00. 250.00



NH
set
138

World Refugee Year JULY 1952 - JUNE 30, 1956 3602a





DEPOT 1924

55

« ROTARY INTERNATIONAL »

1905 - 1955

ADMINISTRATION DES POSTES
DE BELGIQUE



BESTUUR DER
POSTERIJEN VAN BELGIË





B166a-68a VF, NH, Cplt Set Sheets/10 "STAGECOACH"
(OFF #407a-9a, 6600BF=\$198) Cat. \$175.00 (PH)

