

9 57R

8028

Price _____



Style No. GK 102BK

90

POS 25R14

100 Price 69⁹⁵



90 XF

POS 64R14

100 Price 94⁹⁵



90 XF

POS 82R14

100 Price 89⁹⁵





81L1L
89L1L Relief B
90L1L Relief B



91L1L
94L1L Relief B
95L1L
96L1L
97L1L
98L1L
99L1L Relief B



90 VF w/black cds
pos 82 R1L

Cat. Price 90

Our Price 69⁹⁵



 **Leuchtturm**

341 010

90 F-VF pos 53 R1L

100 Price 59⁹⁵





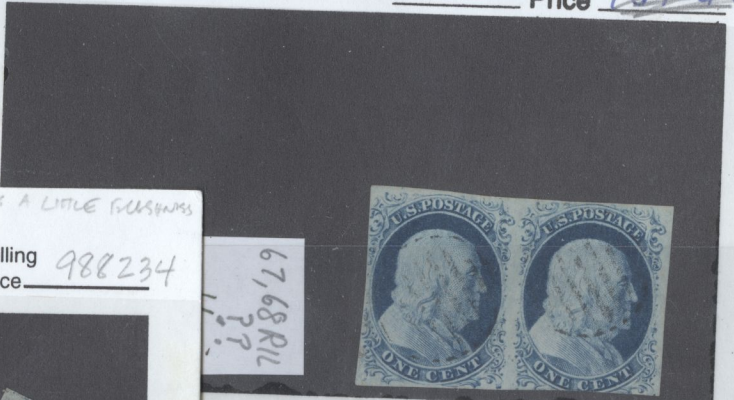


REL.
E
F
C
FEB
12
1860

90 VF POS 87 LIL 100 Price 69⁹⁵



67,68,69 RIL "STEAM SHIP"
CANCEL Price ~~10700~~



90 F FOR KANE, LT CULL, SHIP MAKE & LEFT. LACKS A LITTLE GUMMINESS
W/ SOME EDGE WEAR BUT NOT TOO SOUND
Ken Srail 31 RIL Cat. Price 25⁰⁰ Selling Price 988234



67,68 RIL
??

Item No. GK-102BK



49R2
CERT.



4L1^L

graph is attached. 2



Selling Price

ALL MARKS MATCH
Cat
ARCHIVE

U.S. POSTAGE
DO NOT WRITE
LINE

Several other PM's as well
95R2



Style 107BK

~~7~~ ~~1071814~~ 21R14
Price ~~1.00~~



Style No. GK 102BK

POSITION 100L1L, DOUBLE TRANSFER, BLUE TOWN
CANCELLATION.

AND WE ARE OF THE OPINION THAT:

IT IS GENUINE* * * * *



386217

560



Cat. _____ Our
Price _____ Price _____



MADE IN CANADA

FORM 107B

Price _____

THIS IS
"DAMAGED, POSITION
UNKNOWN" THAT
WAS ON COVER
WITH 91,92 L1^L
IN NUTMEG DEC.
SALE



Item No. GK-102BK

GR14

Matches
All 3 copies



60614

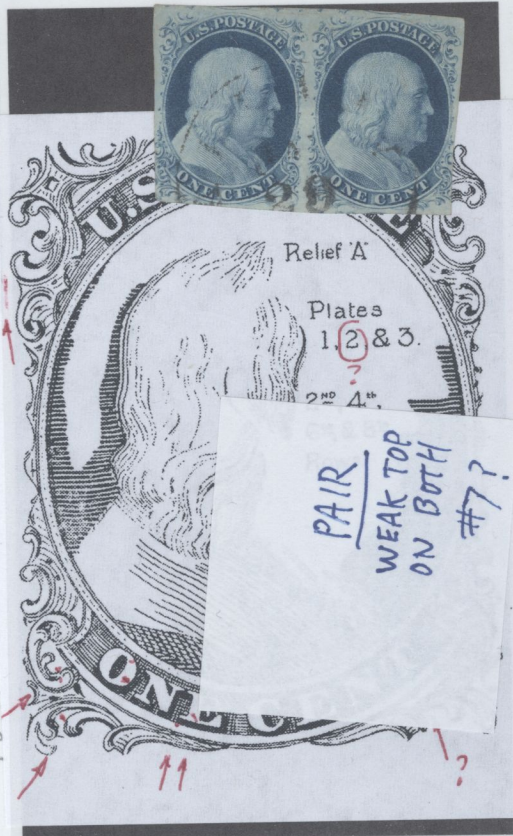
George Downings

St. Johnsbury

Vt.,

#7'S PLATE? POSITION?

Price



Relief 'A'
 Plates
 1, 2 & 3.
 ?
 2nd 4th.

PAIR
 WEAK TOP
 ON BOTH
 #7?

Item No. GK-104BK

#9 31214 EXTRA

Price



Style No. GK-101BK

31214

verified

Price



Item No. GK-102BK

#24

24

1R10

SPACE FILLER

Cat. Price

22⁵⁰

Selling Price

2.25

Price



1R10
Showing
CL flaw
& 10L10

Style No. GK 101BK

Style 1-02A

Price

1.00

61L1L & 62L1L

Late
Impressions

62 shows dot on
Shoulder
scratch over US etc.



Item No. GK-104BK



90 Pairs

VF-XF
Pos 18-19c/L

Price 229.95



90 STRIPS
Pos 9-29c/L

400
Price 360-

48
have examine
pe IV, Positi
d my opinion
gned:
://www.slingshotvenus.



9 w/Dbf Xfr
1c Franklin w/
PF Certificate

(Position
34L1L)

SCV \$105
\$ 99.95

73R14 ??
I DO NOT
THINK SO!

17R14 ←
or
16R14



BOUGHT AS 80R14

I THINK IT IS
20L14



U. S. 1857 - One Cent
Plate 8



61L8
IMPRINT



3R8



52R8
Curl in hair

Center Line



60-70L8



21R8
Blur in head



41R8
Curl over E



68-70L8

68L8 shows a plate flaw above the "U" of US.



71R8



81R8



91R8

U. S. 1857 - One Cent
Plate 9



10L9
"Ear Ring" flaw



30L9



70L9
Dash in Head



100L9



91R9



1 - 21R9

From Hane Depot, IL to Shelburn Falls, MA
3 cents postage for distance between 300 and 3000 miles



91R9

U. S. 1857 - One Cent
Plate 7

Eye Curls



4L7



10L7

The plate 7 "eye curls" are an arc, bottom down, to the left of Franklin's eye in the hair under the "ST" of POSTAGE. They were caused in the same way as the shoulder curls. They occur on positions 3L to 10L and 1R to 3R.

Shoulder Curls



59R7



58R7



99R7

The best known of the TYPE V varieties are the "shoulder curls" from the right pane of plate 7. They occur on positions 57R, 58R, 59R, 97R, 98R, 99R. They are due to a small hair or fibre sticking to the transfer roll during the making of the plate. The "decay" of the fibre tells us that the order of entry was 59R, 99R, 58R, 98R, 57R, 97R. Since the curls were of a shallow depth on the plate, they disappeared quickly as the plate became worn down.

Plate Flaw



71R7



71R7

The flaw is above the "TA" of POSTAGE.

Center Line



50L7



28-30L7



11R7



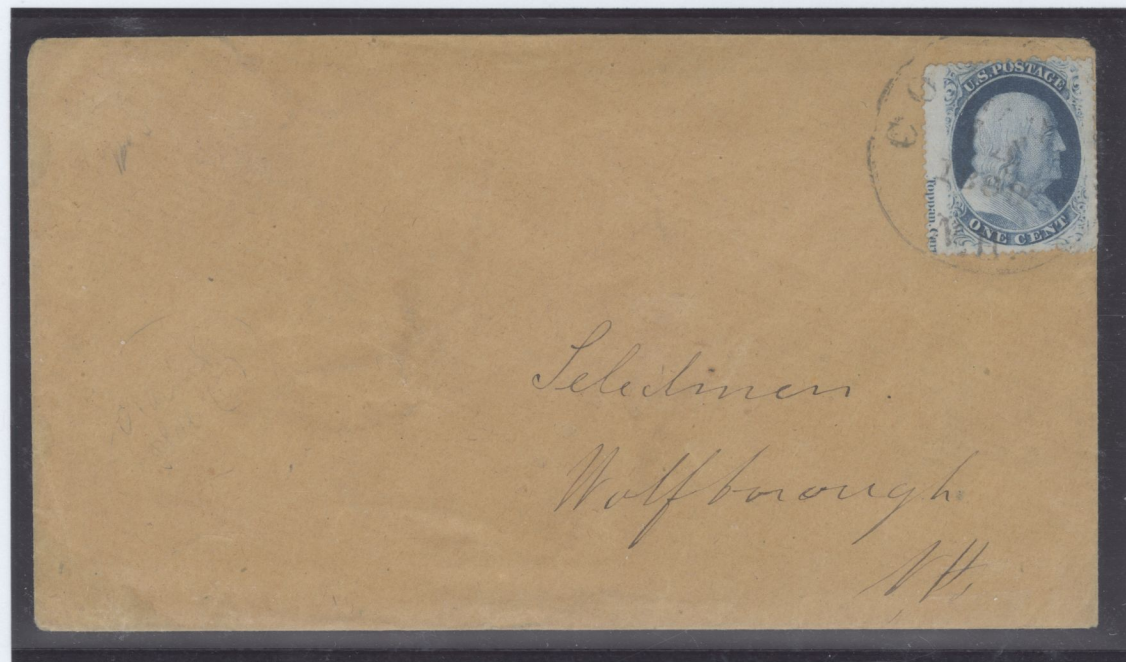
81R7

50L7 has faint mottling and a perforated center line. Plate 7 stamps with perforated center lines are scarce, and are probably early impressions. 29L7 and 30L7 show mottling. 11R7 shows a large blur on the shoulder and the heavy mottling that is seen on plate 7 early printings. 81R7 shows mottling and scratches at the lower right.

U. S. 1857 - One Cent
Imprints on Cover



51L8



31L9



41L9

U. S. 1857 - One Cent
Imprints from Perforated Plates

Plates 5-9

Plate 5

Stamps from this plate are scarce

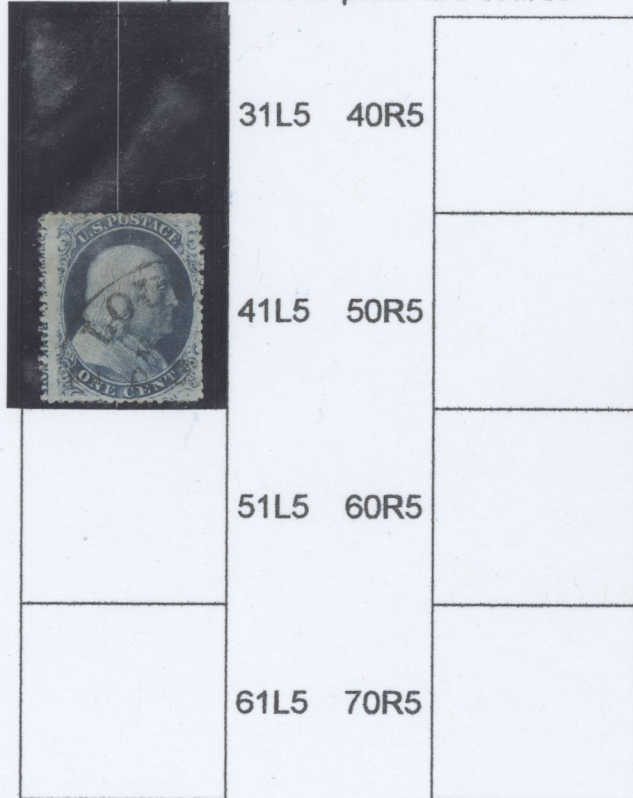


Plate 7



Plate 8



Plate 9



Note: Plate 6 was never used

U. S. 1851 - One Cent
Major Double Transfers

The 89R2 Double Transfer

A study of the double transfer of 89R2 is most interesting. The doubling below 89R is a form of re-entry. Positions 79R ("A" relief) and 89R ("B" relief) were transferred perfectly, the setting being taken from the guide dot SE of 68R. For some reason, the dot SE of 88R (the setting for rocking in the single "B" relief of 99R) was placed far to low as compared to the normal dots below the ninth row.

Using this misplaced dot through error, a transfer was made of the "B" relief in the 99R space. In making this single transfer, the bed of the press was moved to far, and the bottom part of the "A" relief which was above the "B" relief on the roller was transferred into the bottom part of 89R and the margin below 89R.

The original entry of 99R was therefore, out of place, due to the misplaced dot, and the transfer extended a full 3/4 of a millimeter below the other nine stamps in this bottom row. To correct this error the original entry was erased or burnished out, but no attempt was made to erase the parts of the "A" relief transferred into the bottom part of 89R.

This re-entry was an error, as it was not made to correct any existent fault of the original 89R transfer.

89R2 shows the most pronounced double transfer on any U. S. stamp (general issues) known from 1847 to date.



The 52R9 Double Transfer

Like 89R2, an error of the transfer roll setting caused the re-entry error of 52R9. 2R9 to 52R9 (reliefs A - F) were placed correctly. 52R9 being the F relief.

An improper setting was taken for placing 62R9 - 92R9 (reliefs C - F) causing them to be placed lower than normal. As the transfer roll was rocking in 62R9 - 92R9, it was rolled up to far. Since the B relief is above the C relief on the roll, it was the bottom part of the B relief that was re-entered into the bottom of the previously transferred 52R9.

This re-entry was an error, as it was not made to correct any existing fault of the original 52R9.

A good copy of 52R9 showing the variety is very rare. If the perforations are not placed lower than normal, they destroy the principal traces of the variety.

Of the double transfers of the one cent stamp, 52R9 is second only to 89R2, and is the largest of the Type V double transfers.



The Big Plate Flaw



Positions 1-3, 11-13, 21-23 L2

Plate 2 was made in late 1855. The origin of this flaw occurred when the steel was being compressed to a flat shape. It is doubtful that plates of steel used for stamp or bank note plates were "rolled" flat in 1855.

Flaws of this type have a characteristic that shows on the printed stamps. The edge "a" in Fig. 2 shows when printed as a sharp edge, whereas the side "b" in Fig. 2 fades out as the depression merges with the surface of the plate. This is seen in 23L2 and Fig. 3, with a sharp left edge and the blue ink fading out to the right. Very early impressions show the flaw faintly, as seen in Fig. 1, Fig. 4 and on the cover below. As the plate continued to be used, edges of the flaw broke off, and the flaw opened up becoming more noticeable, as seen in Fig. 2, Fig. 3, and the single of position 23L2.

Note the part of the flaw that crosses the shoulder in Fig. 3. The small edge that broke off must have been extremely thin as the lines of the shoulder on the relief roller were transferred through this thin piece to the metal underneath.

The opening up of this flaw is most likely the reason the plate was retired from use a little over a year after it was made.

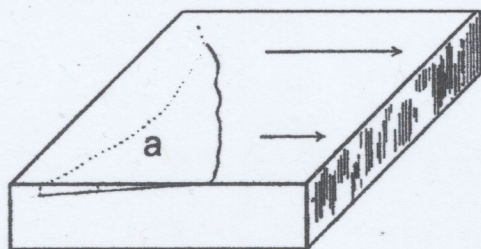


Fig. 1

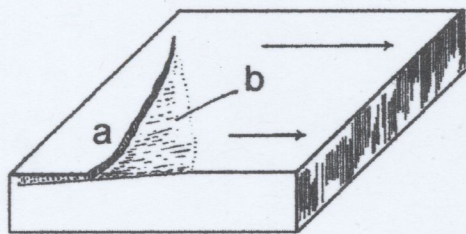


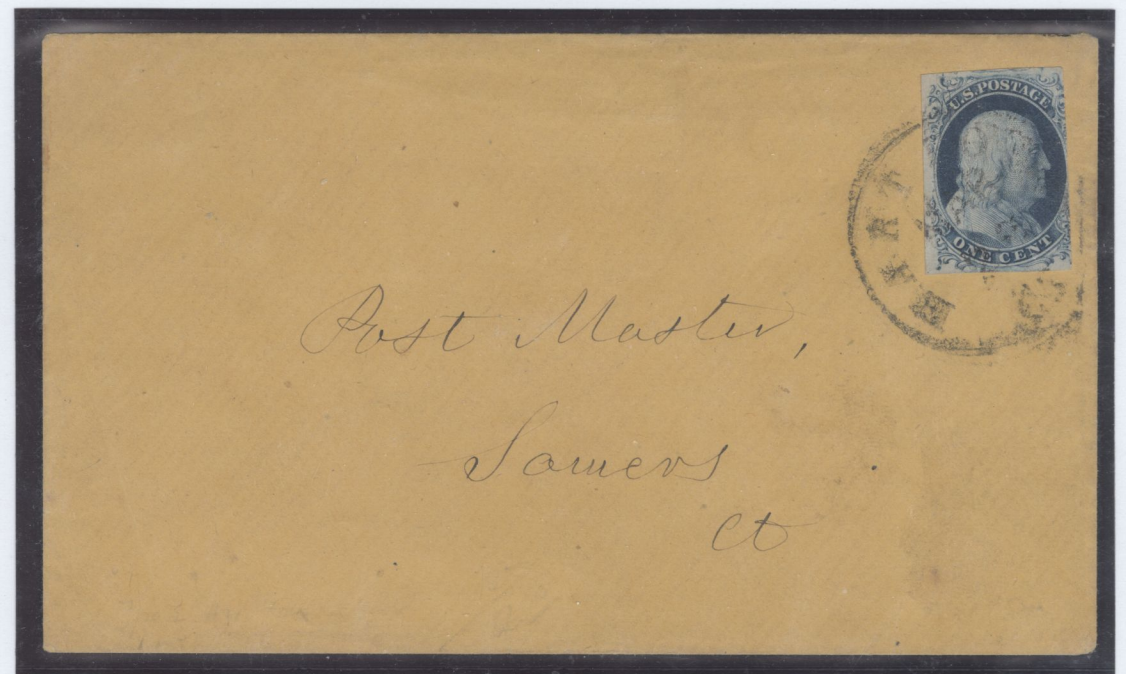
Fig. 2



Fig. 3



Fig. 4



Cover with 23L2 Showing early stage of the flaw

U. S. 1851 - One Cent
Plate 1 Late - Right Pane



The United States
Stamps of 1851 - 1861

INTRODUCTION

From the year 1847 until 1894, United States Stamps were not manufactured by the Government, but were prepared by private bank note engraving firms under contract. When the 1847 contract for the first stamps expired in 1851, a new six year contract was awarded to the firm Toppan, Carpenter, Casilear & Co. The vignettes of both Franklin and Washington as used on the one cent and three cent stamps were first used on banknotes. Both of these vignettes appeared previously on the \$10.00 note of the Bank of Georgetown, South Carolina, bearing the imprint of Toppan, Carpenter & Co.



With a new contract early in 1857, perforations were adopted. Experience gained in perforating the sheets from the original plates made for imperforate stamps, indicated that wider spacings were required both vertically and horizontally to make room for the perforations. Since it seemed impractical to increase the size of the plates, it was decided to trim all four sides of the stamp designs to make room for the perforations. Thus plates 5 - 10 were made during the years of the contract. While the first 4 plates were no longer used for printing, the remaining printed sheets from these 4 plates were perforated and used.

U. S. 1851 - One Cent
Plate 1 Late - Left Pane



Seller discounts (-) or charges (+) \$0.00
Total: \$115.95

Paul



PP TOP
Selling Price

Cat Price

19R14

?

37L14

Price

170090535471

Cat. Price

Selling Price

41L14?

Sc 24 type V
relief A
POSITION 9L10
w/ ORN L/M & H/K
drawn in by BLUE PEN
Plating mark in "O"
of postage

#24a Va
PLATE SCRATCHES
UPPER LEFT
FOR MORE
LATE USAGE
PLS A RELIEF

RATE Scratches
match Archives
9L10 perfectly
reperfed
left right & top



90 VF

90

VF

47L

CDS

Color Blue

Denom. 4c

Issue 1952

Cat No. Scott 9 (USD 3)

27R14

"it is genuine used"

Proudly

2121 Beale Ave, Allentown, PA 18601

GAK HOBBY PRODUCTS