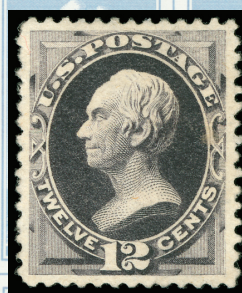
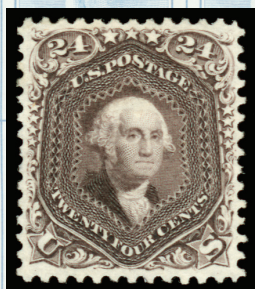


# THE CONCORD COLLECTION



Schuyler  
Rumsey  
Philatelic  
Auctions

APRIL

29

2023

# The Concord Collection

## Public Auction No. 109

Session: Saturday, April 29, 2023 at 10:00 AM

To be held at the **San Francisco Airport Marriott Waterfront in the Bayside II Ballroom**  
1800 Old Bayshore Hwy, Burlingame, CA 94010  
[www.westpex.org](http://www.westpex.org)



### Viewing of all lots in the Bayside III Ballroom:

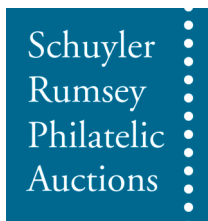
Wednesday, April 26 (10:00AM to 5:00 PM)

Thursday, April 27 (10:00AM to 8:00PM)

Friday-Saturday, April 28-29 (10:00AM to 5:00PM)

Sunday, April 30 (10:00AM to 12:00PM)

Live auction bidding via Stamp Auction Network ([www.stampauctionnetwork.com](http://www.stampauctionnetwork.com))



## SCHUYLER J. RUMSEY

**Philatelic Auctions, Inc.**

47 Kearny St., Suite 500

San Francisco, CA 94108, USA

Telephone: 415-781-5127 Fax: 415-781-5128

E-mail: [srumsey@rumseyauctions.com](mailto:srumsey@rumseyauctions.com)

Catalogs, Internet Bidding and Resources at our Website: [www.rumseyauctions.com](http://www.rumseyauctions.com)

Catalog Price \$20

## The Rumsey Auction Team



Schuyler J. Rumsey  
President



Scott Wieduwilt  
Vice President

### Bidding Increments

\$10-\$300 . . . . .	\$10	\$3,000-\$7,500 . . . . .	\$250	\$75,000-\$150,000 . . . . .	\$5,000
\$300-\$750 . . . . .	\$25	\$7,500-\$15,000 . . . . .	\$500	Over \$150,000 . . . . .	Auctioneer's discretion
\$750-\$1,500 . . . . .	\$50	\$15,000-\$30,000 . . . . .	\$1,000		
\$1,500-\$3,000 . . . . .	\$100	\$30,000-\$75,000 . . . . .	\$2,500		

### Recommended Auction Agents

**Charles E. Cwiakala**  
1527 S. Fairview Avenue  
Park Ridge, IL 60068-5211  
Tel./Fax: (847) 823-8747  
Email: CECwiakala@aol.com

**Frank Mandel**  
P.O. Box 157  
New York, NY 10014  
Tel: (212) 675-0819  
Fax: (212) 366-6462  
Email: busybird1@me.com

**Nick Martin**  
Angel House, Station Road  
Lincolnshire PE20 2JH  
United Kingdom  
Tel: (44) 120 546-0968  
Cell: (44) 0770 376-6477

**Giacomo Bottacchi**  
Via Filli Bronzetti 21  
Milano 20129  
Italy  
Tel: (02) 718-023  
Fax: (02) 738-4439  
Email: gbstamps@iol.it

**Jochen Heddergott**  
Bauerstrasse 9  
D-8000 München 40  
Germany  
Tel: (089) 272-1683  
Fax: (089) 272-1685  
Email: mail@philagent.com

**Trevor Chinery**  
9 St. Laurence Way, Stanwick  
Northamptonshire NN9 6QS  
England  
Tel: (044) 1205 330 026  
Fax: (044) 1933 622 808  
Email: TrevorTrilogy@aol.com

### Symbols

**	Mint (never hinged)	☒	Cover	S	Specimen
*	Mint (hinged)	(☒)	Cover Front	//	Incomplete Set
(*)	Mint (no gum/regummed)	B	Booklet or Booklet Pane	▲	On Piece
o	Used	E	Essay		
□	Block	P	Proof		

### Grading and Condition

<b>Superb</b>	Extraordinary item in the finest condition.
<b>Extremely Fine</b>	Outstanding and exceptional quality.
<b>Very Fine</b>	Choice, first-class condition.
<b>Fine-Very Fine (F-VF)</b>	Stamp or cover in sound condition; if a stamp, it is slightly less well-centered than Very Fine but better centered than Fine.
<b>Fine</b>	Sound in all respects. Perforated stamps will have the designs clear of the perforations; the designs of imperforate stamps will not be cut in to any significant degree.
<b>Very Good (VG)</b>	Imperfect centering (stamps) or poor general appearance.

Any stamp faults such as a thin spot, tear, crease etc., will be described at all times. Postally used covers should be expected to have the normal degree of wear associated with them and this wear is not grounds for return. The grade of a cover is independent of the grade of the stamps on it. Covers from the famous Carroll-Hoy correspondence will normally have a small unobtrusive staple hole. In lots containing several items, degrees of condition denote the overwhelming average and examples above and below such condition can be expected.

# Terms of Sale

## Bidding

I. All bids (whether by floor bidders, mail bidders, or telephone bidders) will have a premium of 18% added to the auction sale price.

II. All bids are per lot as numbered in the catalog unless otherwise announced by the auctioneer at the time of sale. The right is reserved to withdraw any lot prior to sale, to divide a lot, or to group two or more lots, or to act on behalf of the seller. Schuyler Rumsey Philatelic Auctions, Inc. will execute bidding instructions on behalf of clients, but will not be responsible for any errors in the execution of such bids. Schuyler Rumsey Philatelic Auctions, Inc. is not liable for bidding errors related to live auction internet bidding and/or the loss of internet connection during the live auction.

III. The highest bidder shall prevail; lots are sold at one increment over the second highest bid. Should any dispute arise between bidders, the decision of the auctioneer as to the successful bidder and the reoffering or resale of the lot under dispute shall rest entirely on the judgment of the auctioneer. The auctioneer shall regulate the bidding and reserve the right to refuse any bid believed by him not to be made in good faith.

IV. Consignor has and retains the right to bid personally, or by his duly appointed agent, through the auctioneer, unless the sale is advertised and announced as one restricting such bidding by consignors or their agents.

## Payments of Purchases

V. FLOOR BIDDERS. Floor bidders shall furnish the auctioneer their names and addresses prior to bidding on any lot. The name and address of the buyer of each lot shall be registered with the auction house following the sale of each lot. Payment of the whole purchase price shall be made by the floor buyer in such manner as the auctioneer may determine. Special credit arrangements must be made prior to the sale.

VI. MAIL BIDDERS. A successful mail bidder will be notified of lots purchased and must remit payment before the lots are sent. Auction bills are due and payable upon receipt of notification. If buyer's payment is not received within ten (10) days, Schuyler Rumsey Philatelic Auctions, Inc. may resell all lots without notice. Any and all losses incurred as a result of resale will be passed on to the defaulting buyer. Cost of postage, registration, etc. will be charged to buyer. Proof by the auctioneer of receipt of sending at the advised address shall constitute delivery.

VII. DIRECT DRAFTS/TRANSFERS. A successful mail bidder known to us may contact our office at (415) 781-5127 for the information necessary to pay directly into the vendor bank account. Any additional charges resulting from processing payments by this method shall be borne by the buyer. Method of payment should be noted on the bid sheet.

VIII. Title shall not pass to the buyer until full payment is received by Schuyler J. Rumsey Philatelic Auctions, Inc.

IX. All of our lots are sold as genuine. Lots accompanied by recent (within 5 years of sale date) expert certificates are sold "as is" based on the description in the certificate. The aforementioned expertized lots may not be returned under any circumstances including those instances in which subsequent certificates yield conflicting opinions. The accepted authorities for U.S. stamps are the Philatelic Foundation (P.F.), the Philatelic Stamp Authentication and Grading, Inc. (P.S.A.G.) and the Professional Stamp Expertizing Committee (P.S.E.). **In addition, a lot may not be returned because an expertizing service grades a stamp lower than the grade stated in the description, or differs from the accompanying certificate.**

X. The Auctioneer must be notified within 5 business days from the date of the auction of any request to place a lot on extension for expertizing. All extensions must be paid in full, in advance. There will be no exceptions and no lots may be returned under any circumstances if this term has not been strictly followed.

XI. All lots on extension must be submitted for expertizing by the auctioneer exclusively. Each lot is sold as genuine, except those described "as is", but when, in the opinion of a competent authority acceptable to Schuyler J. Rumsey Philatelic Auctions, Inc., the lot is declared otherwise, the purchase price will be refunded in full. The lot must be received by Schuyler J. Rumsey Philatelic Auctions, Inc. within a period of 21 days from the date of auction. Expenses incurred for purposes of expertizing shall be borne by the purchaser except where the lot is found by said competent authority to be materially not as described, in which case the consignor will be responsible for expertizing costs incurred. Proof of the inability of said competent authority to express a definite opinion is not grounds for return of an item.

XII. Any lot, description of which is incorrect, is returnable (A) within three (3) days of receipt and (B) if received by Schuyler J. Rumsey Philatelic Auctions, Inc. within twenty-one (21) days from the date of the auction. All disputed lots must be returned intact, in the condition received; no adjustments will be made. The following lots are not returnable: lots containing ten (10) or more items; lots from purchasers OR THEIR AGENTS who had the opportunity to examine them before the auction; items described as having defects or of a quality standard "Very Good" (V.G.) or below; lots with disputed centering or margins when the item is photographed; lots described "as is".

XIII. JURISDICTION. In the event of any dispute between the auctioneer and bidders, or between any parties requesting inspection of any of the lots and the auctioneer, or between persons offering their lots to be auctioned and the auctioneer, the jurisdiction over the dispute shall be in the City and County of San Francisco, State of California.

XIV. In the event of any dispute, the prevailing party shall be entitled to court costs and reasonable attorney's fees.

XV. The California State Sales Tax - or that of another state as ordered by the laws of such a state (as appropriate) - is payable by buyers liable to tax. See below.

## Sales Tax

This sale will be held in California and the buyer will be liable for any applicable sales tax for this auction. Any lots purchased by buyers in California or that of another state as ordered by the laws of such a state are subject to State Sales Tax unless:

1.) You have a verifiable resale license number, which must be on file with us prior to the Auction.

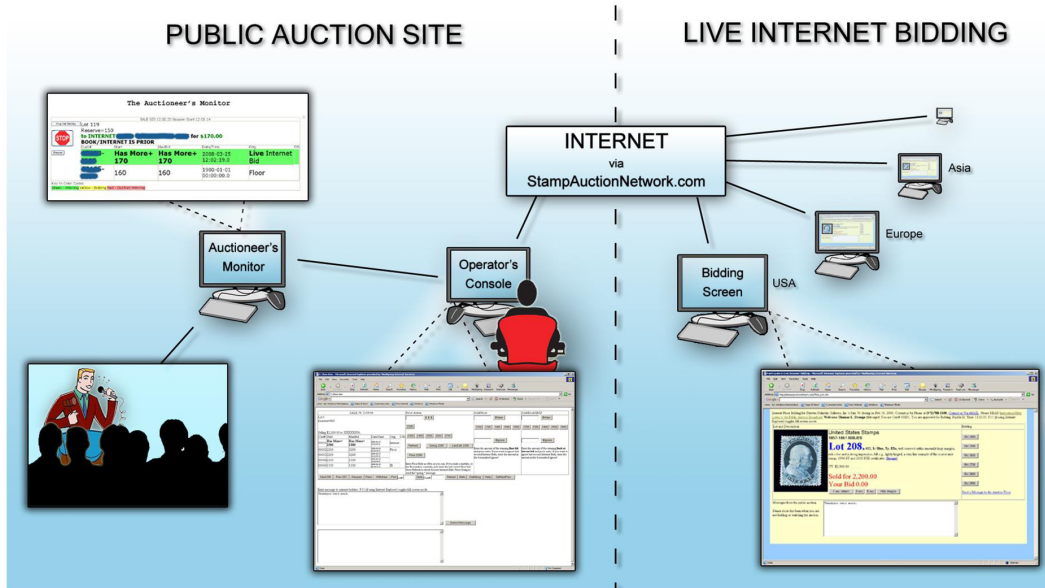
OR

2.) You are not a California resident or that of another state as ordered by the laws of such a state are subject to State Sales Tax and your lots are being shipped to your out-of-state or out-of country mailing address.

XVI. THE PLACING OF A BID SHALL CONSTITUTE ACCEPTANCE OF THE FOREGOING TERMS OF SALE.

# Live Auction Bidding Hosted by Stamp Auction Network

Bid Live via the internet as tough you were on the auction room floor!



I have already registered with SAN and have been approved by Rumsey for internet bidding.

I have not bid through SAN before.

Go to [www.stampauctionnetwork.com](http://www.stampauctionnetwork.com), hover over the Membership tab at top and select "Register" from the options. Fill out the online form and select Schuyler J. Rumsey Auctions from the list of auction companies. If you are a prior Rumsey client, simply put us as reference #1. If not, please provide proper trade references (no family members or credit card companies). Once registered at SAN and approved by Rumsey for bidding, you will be ready for live internet bidding

I have bid through SAN before, but this is the first time I have bid in a Rumsey sale.

You will just need to be approved by Rumsey for bidding. Go to [www.stampauctionnetwork.com](http://www.stampauctionnetwork.com), login in to your account and then hover over the My San tab at top and select "Update Registration" from the options. Select Schuyler J. Rumsey Auctions from the list of auction companies and submit your information to us for approval. Once approved you will be ready for bidding.

Before bidding by internet for the first time, we recommend finding a sale in progress on SAN and listening to the public broadcast or login as a registered bidder. This will allow you some familiarity with the bidding interface.

**Auction Day - Log on at [www.stampauctionnetwork.com](http://www.stampauctionnetwork.com)**

After you logon, Select our sale from the list at the top right of the screen.

The auction interface will show an image of the lot (if enabled) and a brief description, the current bidding status, etc.

Retracting a bid is usually not acceptable, so please bid accordingly.

If you are done bidding, please click the "PASS" button. This will allow us to ensure we know you are done bidding and it will speed up the auction.

For any questions or concerns during the auction, please contact our office:

[srumsey@rumseyauctions.com](mailto:srumsey@rumseyauctions.com)

(415) 781-5127

# The Concord Collection

## Table of Contents

### Session

**Saturday, April 29, 2023, at 10:00 A.M.**

4001-4045	1847 Issues to 1875 Reprints of the 1857 Issue
4046-4079	1861-1866 Issue to 1875 Re-issue of the 1861-1866 Issues
4080-4099	1869 Pictorial Issue & 1875 Re-issue of the 1869 Pictorial Issue
4100-4120	1870-1871 National Bank Note Co. Issues
4121-4133	1873-1875 Continental Bank Note Co. Issue & Special Printings
4134-4144	1879-1880 American Bank Note Co. Issue & Special Printings
4145-4150	1881-1888 American Bank Note Co. Issues & Special Printings
4151-4158	1890 A.B.N.C. Small Bank Note Issue
4159-4165	1893 Columbian Issue
4166-4180	1894-1903 Bureau Issues
4181-4182	1898 Trans-Mississippi Issue
4183-4195	1902-1908 Regular Issues
4196-4204	1908-1910 Washington-Franklin Issue
4205-4211	1909 Bluish Paper Issue
4212-4245	1910-1919 Washington-Franklin Issue
4246-4250	1918-1928 Regular Issues
4251-4251	1935 National Parks
4252-4297	1954-2007 Regular Issue Varieties
4298-4298	Airmail Issues



## The Concord Collection

We are pleased to offer the Concord collection. This is one of the finest collections to come across the block at Rumsey auctions. The collection was formed over the course of 40+ years, each stamp selected for its individual beauty.

As you will note, only a small percentage of the stamps carry graded certificates. The collection was formed primarily in the 1970's, 80's and 90's, prior to the current grading system. The collector handpicked stamps not only for centering, but for color, cancels, perforations, and freshness. The owner took all of these factors into consideration when judging the overall beauty for inclusion in the collection.

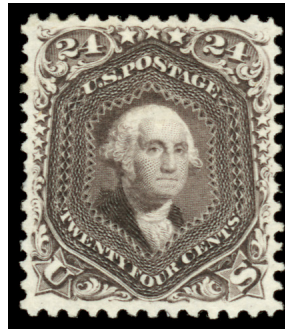
In his quest to find the finest available, he was guided on many of his purchases by the long time and venerable stamp dealer, Richard Champagne. Richard was a fixture at stamp exhibitions throughout the United States during the last half a century and helped build some of the finest collections during his tenure as a stamp dealer.

We would love to take credit for the beauty included here in, but it is the collector who deserves praise, he has done the hard work, patiently selecting items, so we tip our hat to the Concord Collection.

*Schuyler Rumsey*

PS: Please see the collection section of the main catalog for the Concord Collection balance collection.

**Two Select Gems, Both Graded Superb 98 by the P.S.E.**



1847 Issue



- 4001 o **5¢ Red Brown**, light strike of orange red grid cancel, deep color, fresh with nice impression, **Extremely Fine and attractive**; with 1987 P.F. certificate.  
 Scott No. **1**. . . . . \$425



- 4002 o **10¢ Black**, red grid cancel, four large margins, fresh color, **Very Fine to Extremely Fine, a choice example**; with 1981 & 2020 P.F. certificates, latter **Graded VF-XF 85**.  
 Scott No. **2**. . . . . \$900



- 4003 (\*) **5¢ Red Brown, Reproduction**, without gum as issued, four nice margins, bright color, **Very Fine and attractive**; with 1987 P.F. certificate.  
 Scott No. **3**. . . . . \$1,000



- 4004 (\*) **10¢ Black, Reproduction**, without gum as issued, four nice margins, fresh color, **Very Fine**; with 1987 P.F. certificate.  
 Scott No. **4**. . . . . \$1,250

1851 Issue



4005 o **1¢ Blue, Type Ib**, position 8R1E, light town cancel leaving the design characteristics entirely visible, four large margins to just touching the extreme edge of the bottom left plume, lovely blue pastel shade, **Very Fine to Extremely Fine**; with 1998 P.F. certificate.  
Scott No. **5A** . . . . . \$11,000

A STUNNING EXAMPLE OF THIS RARE STAMP WITH POSITION 8R1E BEING ONE OF THE TWO FINEST EXAMPLES SHOWING THE TYPE.

*Type Ib was produced only as an imperforate stamp. Six positions on Plate 1 Early provided stamps qualifying as Type Ib — Positions 3-6R and 8-9R — distinguished by the complete design at top and nearly complete design at bottom. When first entered on the plate, these six positions (as well as 7R1E) had the complete design at top and bottom. However, small portions of the bottoms were burnished away, with the exception of 7R. Positions 6R and 8R had less of the bottom erased than the other Type Ib positions, and for this reason they are more desirable examples of the type.*

*A Type Ib with large margins all around is a great rarity, particularly in sound condition.*

**The Rare 1851 1¢ Blue, Type Ia, Graded Superb 98 by the P.S.E.**



4006 o     **1¢ Blue, Type Ia**, Position 97R4, huge even margins, deep, fresh color, light town cancellation, **Superb**; with 1997 P.F. & 2004 P.S.E. certificates, latter **Graded Superb 98 (SMQ \$90,000)**.  
Scott No. **6**. . . . . \$9,250

A SUPERB GEM WHICH IS ONE OF THE GREAT CLASSICS OF THE 19TH CENTURY. THIS IS ONE OF TWO GRADE SUPERB 98 BY THE P.S.E. WITH NONE HIGHER. THE EXAMPLE HERE IN OUR OPINION IS THE FINER OF THE TWO STAMPS.

*Produced only from 18 of the 20 subjects in the bottom row of both panes of Plate 4, the 1¢ imperforate, type Ia owes it's rarity to the short three month period that the Plate 4 imperforates where produced.*



- 4007 o **1¢ Blue, Type II**, large even margins including part of next stamps at top and bottom, lovely blue shade, light town cancel, **Extremely Fine and attractive**; with 1983 & 2020 P.F. certificates, latter **Graded XF 90**.  
 Scott No. 7. . . . . \$150



- 4008 o **1¢ Blue, Type III**, black town cancel, four large margins clearly showing breaks at top and bottom, deep color, **Extremely Fine**; with 1992 P.F. certificate.  
 Scott No. 8. . . . . \$1,500



- 4009 o **1¢ Blue, Type IIIa**, position 84L4, bold New-York cds, large even margins clearly showing the Type IIIa characteristics, deep color, **Extremely Fine**; with 1990 P.F. certificate.  
 Scott No. 8A. . . . . \$1,250



- 4010 o **1¢ Blue, Type IV**, huge margins on three sides showing parts of other stamps and margin well clear at bottom, light Mass. town cancel, lovely delicate shade, **an Extremely Fine gem**; with 1989 & 2020 P.F. certificates, latter **Graded XF 90J**.  
 Scott No. 9. . . . . \$100



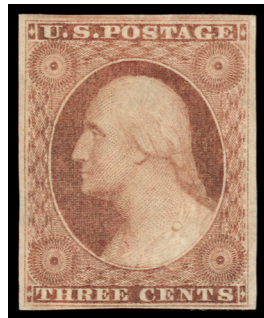
Ex 4011

4011 o/☒ **1851 3¢ Issue Calendar**, mounted in calendar format, with each bearing a clear central date stamp for **each of the 366 days of the year**, including the elusive Feb 29th date (the year 1852 was leap year), each stamp hand-selected with the far majority showing an upright date with clear bold central date strikes the rule, many 4-margin examples throughout, includes a few dozen covers and additional “improvement” stamps, **Very Fine and choice**, a remarkable **Complete 1851 3¢ Calendar and one of the finest we have ever offered**.

Scott No. 10-10A, 11-11A . . . . . Estimate \$1,000 - 1,500



- 4012 o **3¢ Orange Brown, Type II**, bold New York four bar cancel, four nice even margins, deep, rich color, **fresh & Extremely Fine**; with 1988 P.F. certificate.  
 Scott No. **10A** . . . . . \$150



- 4013 \* **3¢ Dull Red, Type I**, o.g., very lightly hinged, four nice even margins, **Extremely Fine and choice**; with 1989 P.S.E. certificate.  
 Scott No. **11** . . . . . \$250



- 4014 o **5¢ Red Brown**, very light town postmark, four large to huge margins, bright, fresh color, **Very Fine to Extremely Fine, a lovely stamp**; with 1956 B.P.A., 1990 & 2020 P.F. certificates, last **Graded VF-XF 85**.  
 Scott No. **12** . . . . . \$775



- 4015 o **10¢ Green, Type I**, neat New-York cds, large even margins, fresh color, **Very Fine to Extremely Fine**, a choice example of the **10¢ Type I**; with 1984 & 2020 P.F. certificates, latter **Graded VF-XF 85**.  
 Scott No. **13** . . . . . \$750



4016



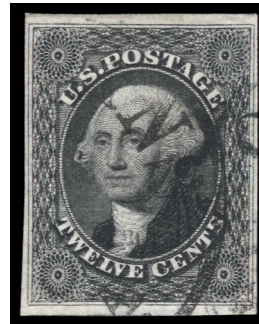
4017

- 4016 o **10¢ Green, Type II**, crisp red grid cancel, four large margins, fresh color, **Very Fine and attractive**; with 1991 P.F. certificate.  
 Scott No. **14** . . . . . \$145

- 4017 o **10¢ Green, Type III**, New Orleans cds, large to huge margins, slightly dry print, **Extremely Fine**.  
 Scott No. **15** . . . . . \$145



4018



4019

- 4018 o **10¢ Green, Type IV, Recut at Bottom**, Position 76L1, neat manuscript cancel, large even margins, fresh color, **Extremely Fine and attractive**, a gorgeous used example; with 1995 & 2020 P.F. certificates, latter **Graded XF 90**.  
 Scott No. **16** . . . . . \$850 as pen cancelled

- 4019 o **12¢ Black**, light town cancel, four margins, deep color, **Very Fine and attractive**; with 1986 Holcombe & 1991 P.F. certificates.  
 Scott No. **17** . . . . . \$325

1857 Issue



- 4020 o **1¢ Blue, Type I**, light town cancel, well centered with full perforations, fresh powder blue color, **Very Fine to Extremely Fine**; with 1994 P.F. certificate.  
 Scott No. **18** . . . . . \$500



- 4021 o **1¢ Blue, Type Ia**, grid cancel & part town cancel, well centered with design shift to bottom showing full perfs and scissor trimmed below leaving the full design intact at bottom, **Very Fine and choice**; with 2000 P.F. certificate.  
 Scott No. **19** . . . . . \$9,500



- 4022 o **1¢ Blue, Type II**, plate 2, trace of cancel, well centered & fresh color, **Very Fine and choice, looks like and Extremely Fine stamp**; with 1985 & 2020 P.F. certificates, latter **Graded VF 80**.  
 Scott No. **20** . . . . . \$275



- 4023 o **1¢ Blue, Type III**, light St. Louis cds, nicely center with full perforations, fresh, bright color, **Very Fine and particularly attractive**; with 1991 P.F. certificate.  
 Scott No. **21** . . . . . \$1,400



- 4024 o **1¢ Blue, Type IIIa**, light grid cancel, well centered and full perfs, bright color, **Extremely Fine and choice**; with 1984 P.F. certificate.  
 Scott No. **22** . . . . . \$475



- 4025 o **1¢ Blue, Type IV**, light, unobtrusive postmark, bright fresh color, **F.-V.F. and attractive**; with 1994 & 2020 P.F. certificates, latter **Graded F-VF 75**.  
 Scott No. **23** . . . . . \$550



- 4026 o **1¢ Blue, Type V**, pretty red town cancel, beautifully centered with fresh color, **Extremely Fine and choice**.  
 Scott No. **24**. . . . . \$55



- 4027 \* **3¢ Rose, Type I**, slightly disturbed o.g., fresh color, **Fine**, a very difficult stamp to find in mint condition; with 2002 P.S.E. certificate **Graded F 70**.  
 Scott No. **25**. . . . . \$3,000



- 4028 o **5¢ Brick Red, Type I**, red & black town cancels, bright color with full perforations, **Very Fine and choice**, a handsome example of this scarce shade; with 1998 P.F. certificate.  
 Scott No. **27**. . . . . \$1,450

One of the Finest 1857 5¢ Red Brown



4029 o **5¢ Red Brown, Type I**, light New Orleans postmark of Jan. 1859, well centered with deep, true red brown color, full perfs, **an Extremely Fine gem**; with 1995 & 2020 P.F. certificates, latter **Graded XF 90**.  
Scott No. **28** . . . . . \$1,100 ++

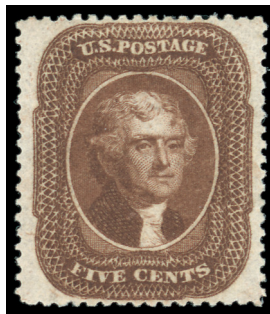
A BEAUTIFUL USED EXAMPLE OF THE 1857 5-CENT RED BROWN. THIS ISSUE IS RARE WITH SUCH CHOICE CENTERING.

*This should be catalogued as Deep Red Brown, as it is much closer to the Indian Red than it is to the 1856 Red Brown.*



- 4030 o **5¢ Indian Red, Type I**, New Orleans postmark, stunning Indian Red color, well centered and full perforations, **Very Fine and choice**; with 2001 P.F. certificate.  
 Scott No. **28A** . . . . . \$3,750

A REMARKABLY FRESH AND VIBRANT SHADE OF INDIAN RED, THE MOST DESIRABLE COLOR VARIETY OF THE 5-CENT 1857 ISSUE.



- 4031 \* **5¢ Orange Brown, Type II**, o.g., very lightly hinged, Post Office fresh with rich color and long full perforations, **an Extremely Fine gem**; with 2000 & 2020 P.F. certificates, latter **Graded XF 90 XQ**.  
 Scott No. **30** . . . . . \$1,200

A STUNNING ORIGINAL-GUM EXAMPLE OF THE 1861 5-CENT ORANGE BROWN.

*The 5¢ stamps in the Orange Brown shade (Scott 30) were printed from Plate 2 in 1861. They were the last stamps of the 1857 Issue distributed before the Post Office Department demonetized all circulating stamps in August 1861 due to the Civil War. Unused remainders were discovered in the South after the war, and so unused copies are readily available. However, it is difficult to find this issue in sound and centered original-gum condition.*



- 4032 o **10¢ Green, Type I**, light town cancel of what appears to be San Francisco Jul 20 1860, bright, fresh color with large even margins for the issue, **an Extremely Fine gem**; with 1998 P.F. certificate.  
 Scott No. **31** . . . . . \$1,100

ONE OF THE FINEST 1857 10¢ TYPE I THAT WE HAVE EVER OFFERED.



- 4033 o **10¢ Green, Type III**, neat New York Ocean Mail postmark, bright, fresh color with full perforations, **Very Fine and attractive**.  
 Scott No. **33** . . . . . \$190



- 4034 o **10¢ Green, Type IV, Recut at Top**, Position 74L1, light town cancel, full perfs & fresh color, **Very Fine and choice**; with 1988 P.F. certificate.  
 Scott No. **34** . . . . . \$2,100

A LOVELY USED EXAMPLE OF THE PERFORATED 1857 10¢ TYPE IV SHOWING THE SINGLE RECUT AT TOP FROM POSITION 74L1.

*The 10¢ 1855 Type IV stamps are defined by the recut of one or both outer lines at the top or bottom of the design. Type IV stamps come from only seven positions on the left pane and one position on the right pane of Plate 1.*



- 4035 o **24¢ Gray Lilac**, neat black grid cancel, beautifully centered with perforation clear of the design, fresh Post Office color, **an Extremely Fine gem**; with 1986 P.F. certificate.  
 Scott No. **37** . . . . . \$400

A SUPERB GEM WHICH IS ONE IN A MILLION.



- 4036 o **30¢ Orange**, red grid cancel, well centered, **Extremely Fine**, a very difficult stamp to acquire in this choice condition; with 1984 P.F. certificate.  
 Scott No. **38** . . . . . \$550

**A Gem Example of the 1858 90¢ Blue**



4037\* **90¢ Blue**, o.g., previously hinged, light natural bend, wonderful Post Office color & freshness, beautifully centered, **an Extremely Fine gem**; with 1996 P.F. certificate.  
Scott No. **39** . . . . . \$3,000

A GORGEOUS EXAMPLE OF THIS ICONIC HIGH VALUE WHICH IS RARELY FOUND IN THIS CHOICE CONDITION.

*The high denomination stamps of the 1857 Issue were needed to prepay high international letter rates established by various postal treaties. When supplies of current postage stamps were demonetized by the Federal government, the 90¢ had been in use for only one year. Most unused examples come from supplies recovered from Southern post offices. The vast majority of these have no gum or poor centering, this is an extraordinary exception to the rule.*

1875 Reprints of the 1857 Issue



- 4038 (\*) **1¢ Bright Blue, Reprint**, without gum as issued, well centered, bright color, **Extremely Fine and choice**; with 1989 P.F. certificate.  
Scott No. **40** . . . . . \$600 for the grade of fine



- 4039 (\*) **3¢ Scarlet, Reprint**, without gum as issued, brilliant color and impression, full perforations, **F.-V.F. and handsome (only 479 sold)**; with 1980 P.F. & 1997 P.S.E. certificates.  
Scott No. **41** . . . . . \$2,850 for the grade of fine



- 4040 (\*) **5¢ Orange Brown, Reprint**, without gum as issued, perfectly centered with perfs clear of design all around, handsome orange brown shade, **an Extremely Fine gem**; with 1969 & 2000 P.F. certificates.  
Scott No. **42** . . . . . \$1,200 for the grade of fine

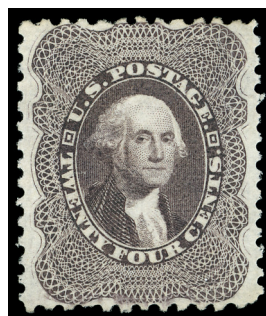
ONE OF ONLY A HANDFUL FOUND IN THIS SUPERB CONDITION. ONLY 878 EXAMPLE SOLD.



- 4041 (\*) **10¢ Blue Green, Reprint**, without gum as issued, vibrant color on bright fresh paper, well centered, **Extremely Fine and choice, a gorgeous example to this rare Reprint (Only 516 sold)**; with 1989 & 2004 P.F. certificates.  
 Scott No. **43** . . . . . \$2,500 for the grade of fine



- 4042 (\*) **12¢ Greenish Black, Reprint**, without gum as issued, well centered, Post Office color & freshness, full perforation all around, **Extremely Fine example of this tightly margined stamp (Only 489 sold)**.  
 Scott No. **44** . . . . . \$2,750 for the grade of fine



- 4043 (\*) **24¢ Blackish Violet, Reprint**, without gum as issued, beautifully centered with rich color, one blunt perf at bottom, **still an Extremely Fine gem (Only 479 sold)**; with 2000 P.F. certificate.  
 Scott No. **45** . . . . . \$3,000 for the grade of fine



4044 (\*) **30¢ Yellow Orange, Reprint**, without gum as issued, bright, fresh color, well centered, **Very Fine (Only 480 sold)**; with 2000 P.F. certificate.

Scott No. **46** . . . . . \$3,000 for the grade of fine

A GORGEOUS EXAMPLE THE 30¢ REPRINT IN POST OFFICE CONDITION.



4045 (\*) **90¢ Deep Blue, Reprint**, without gum as issued, deep color, fresh and sharp impression, **Very Fine and choice (Only 454 sold)**; with 2000 P.F. certificate.

Scott No. **47** . . . . . \$3,750 for the grade of fine

1861 First Designs



- 4046 o    **10¢ Dark Green, First Design**, light red town cancel, well centered with perfs clear of design on all sides, rich color, **Very Fine and choice**, *ex-V. Morris*; with 1988 P.F. certificate.  
Scott No. **62B** . . . . . \$1,860

A LOVELY EXAMPLE OF THIS ISSUE, WHICH IS ONE OF THE MOST DIFFICULT 19TH CENTURY STAMPS TO FIND IN SOUND CONDITION, AS EVIDENCED BY INCLUSION IN THE DR. VERNON MORRIS COLLECTION OF SUPERB USED UNITED STATES STAMPS.

1861-1866 Issue



4047



4048

- 4047\* **1¢ Blue**, o.g., lightly hinged, **fresh & Very Fine**.  
 Scott No. **63** . . . . . \$275
- 4048 o **3¢ Pink**, grid cancel, lovely pink shade with the typical bluish cast, **Very Fine and attractive**; with 1996 P.F. certificate.  
 Scott No. **64** . . . . . \$575



- 4049 o **1861-68, 3¢/90¢ Issues, San Francisco Cog-Wheel Cancels**, selection of 12 different issues (Scott #65, 67-73 & 75-78), each bearing a full to near complete strike of the **San Francisco cog-wheel cancel**; 5¢ buff, 2¢ black, 5¢ red brown & 24¢ lilac with small flaws, **all with Very Fine strikes**; #70-72 with 1980's P.F. certificates.  
 Scott No. **65//78** . . . . . \$3,243

### 1867 Grilled Issues



- 4050 o **3¢ Rose, A. Grill**, segmented cork cancel, typical centering however the perforations are full and complete, **F.-V.F.**; with 1996 P.F. certificate.  
Scott No. **79** . . . . . \$1,300

ONE OF THE FEW STAMPS SHOWING FULL AND COMPLETE PERFORATIONS.

*The 1867 A Grill was the first experimental grill to be used in the United States, which proved to be a failure, as the all over grill damaged the stamps. It was soon modified into smaller grills and was far more effective. As a result, examples showing intact perforations are very rare and highly sought after.*

*The Scott catalogue states that, "Values for No. 79 are for Fine-Very Fine examples with minor perf. faults. Examples with complete or virtually complete perforations sell for much more."*



- 4051 o **3¢ Rose, C. Grill**, segmented cork cancel, well centered amid large margins, fresh color & sharp impression of the grill, **Extremely Fine**; with 1991 P.F. certificate.  
Scott No. **83** . . . . . \$1,100

A GEM EXAMPLE OF THE 1867 3¢ C. GRILL WHICH IS RARELY FOUND IN THIS CHOICE CONDITION.



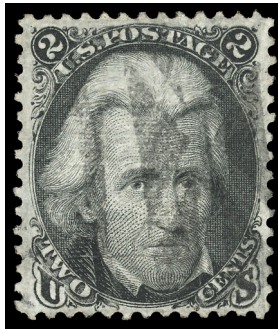
- 4052 o **2¢ Black, D. Grill**, light target cancel, well centered with perfs clear of design all around, fresh color, **Very Fine**; with 2002 P.F. & P.S.E. certificates.  
 Scott No. **84** . . . . . \$5,250

A STUNNING EXAMPLE OF THIS NOTORIOUSLY DIFFICULT STAMP, WHICH IS USUALLY FOUND BADLY OFF CENTERED AND OFTEN DEFECTIVE.



- 4053 o **3¢ Rose, D. Grill**, cork cancel, well centered amid large margins, **Very Fine and choice**.  
 Scott No. **85** . . . . . \$1,050

**An Outstanding Example of the 2¢ Black Jack Z. Grill**



4054 o     **2¢ Black, Z. Grill**, geometric cancel, jet black color which is Post Office fresh, beautifully centered amid large margins for the issue, **Extremely Fine and choice**; with 1992 P.F. certificate.  
Scott No. **85B** . . . . . \$1,100

A VERY DIFFICULT STAMP TO FIND IN CHOICE CONDITION AND WELL CENTERED IN FOUR MARGINS.



- 4055 o **3¢ Rose, Z. Grill**, cork cancel, fresh color with four margins and complete perforations, **Very Fine and choice**; with 2002 P.F. certificate.  
 Scott No. **85C** . . . . . \$3,500

AN IMMENSELY DIFFICULT STAMP TO FIND IN THIS SOUND CONDITION.



- 4056 o **12¢ Intense Black, Z. Grill**, neat Circle of V's cancel, intense black shade, fresh paper showing full perforations, **Very Fine and rare, a lovely example of this difficult stamp**; with 1991 P.F. certificate.  
 Scott No. **85E** . . . . . \$2,250



4057



4058

- 4057 o **1¢ Blue, E. Grill**, unusual Slanted Bar grid cancel, beautifully centered with fresh color, **Extremely Fine and attractive**; with 1985 P.F. certificate.  
 Scott No. **86** . . . . . \$450
- 4058 o **3¢ Rose, E. Grill**, attractive blue cork cancel, large margins, fresh color, full perforations, **Very Fine and choice**.  
 Scott No. **88** . . . . . \$30



- 4059 o **10¢ Green, E. Grill**, geometric cancel, beautifully centered with jumbo margins, fresh color, **Extremely Fine and choice, an outstanding premium example**; with 1994 P.F. certificate.  
 Scott No. **89** . . . . . \$350



- 4060 o **12¢ Black, E. Grill**, attractive red target cancel, beautifully centered with nice margins, **Very Fine and choice**; with 1984 P.F. certificate.  
 Scott No. **90** . . . . . \$475



- 4061 o **15¢ Black, E. Grill**, black cork cancel, well centered & fresh color, **Extremely Fine**; with 1991 P.F. certificate.  
 Scott No. **91** . . . . . \$575



- 4062 o **1¢ Blue, F. Grill**, cork cancel, virtually perfect centering with large margins, bright color, **Extremely Fine to Superb**.  
 Scott No. **92** . . . . . \$425

THIS LOVELY GEM SHOULD RECEIVE A VERY NICE GRADE WHEN SUBMITTED FOR CERTIFICATION.



- 4063 o **5¢ Brown, F. Grill**, black radial cancel, deep, fresh color, **Extremely Fine example of this tightly margined stamp**; with 1992 P.F. certificate.  
 Scott No. **95** . . . . . \$850



- 4064 o **10¢ Yellow Green, F. Grill**, light strike of New York Steamship cds, outstanding centering and margins, fresh color, **an Extremely Fine gem**; with 1991 P.F. certificate.  
 Scott No. **96** . . . . . \$325

A GORGEOUS STAMP COMPLIMENTED BY THE SCARCE NEW YORK STEAMSHIP CANCEL.



- 4065 o **12¢ Black, F. Grill**, perfect bold strike of “leaf” cancel, very well centered, full perforations, **Extremely Fine, an outstanding example**; with 1994 P.F. certificate.  
 Scott No. **97** . . . . . \$250



- 4066 o **15¢ Black, F. Grill**, neat cross roads cancel, bright fresh color, **Very Fine and choice**; with 1994 P.F. certificate.  
 Scott No. **98** . . . . . \$275



- 4067 o **24¢ Gray Lilac, F. Grill**, light cork cancel, well centered with large margins, full perfs, **Extremely Fine**; with 1996 P.S.E. certificate.  
 Scott No. **99** . . . . . \$1,600



- 4068 o **30¢ Orange, F. Grill**, segment cancel and a small portion of blue French entry cds, well centered for this tightly margined stamp, fresh color, **Very Fine and choice**; with 1986 P.F. certificate.  
 Scott No. **100** . . . . . \$1,000

**A Gem Example of this Rare 90¢ Blue, F. Grill**



4069 o     **90¢ Blue, F. Grill**, light cork cancel, well centered, rich color, **Extremely Fine**; with 1994 P.F. & P.S.E. certificates.  
Scott No. **101** . . . . . \$2,500

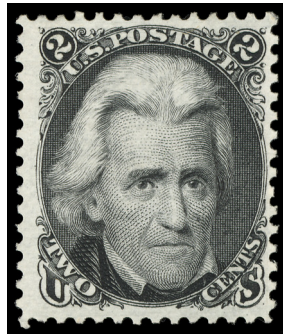
ONE OF THE FINEST USED EXAMPLES OF THE 1868 90¢ F. GRILL, COMBINING CHOICE CENTERING, PERFORATIONS AND COLOR.

*The 90¢ stamps used to make grilled issues were printed on a thick stock of paper. It is likely that sheets remaining from the pre-grill period were used and that the thinner paper introduced in 1868 had not been used for the 90¢ value. Two characteristics of 90¢ F Grill stamps are poorly punched perforations and generally bad centering. This stamp is a remarkable exception. The perfs are much better formed than usual and the centering is precise.*

1875 Re-Issue of the 1861-1866 Issues



- 4070 \* **1¢ Blue, Re-Issue**, slightly glazed o.g., large margins with bright color, **Extremely Fine**; with 1980 P.F. certificate.  
 Scott No. **102** . . . . . \$750



- 4071 (\*) **2¢ Black, Re-Issue**, no gum, sharp impression and Post Office fresh color, **Very Fine and choice (Only 979 sold)**; with 1975 P.F. certificate.  
 Scott No. **103** . . . . . \$1,600 for no gum



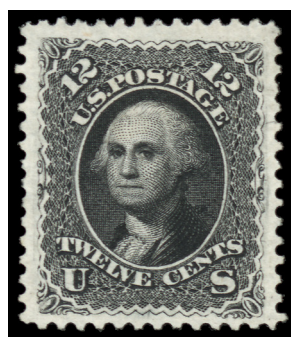
- 4072 (\*) **3¢ Brown Red, Re-Issue**, no gum, wonderful shade and impression, **Very Fine and attractive (Only 465 sold)**; with 2002 P.F. certificate.  
 Scott No. **104** . . . . . \$1,700 for no gum



- 4073 (\*) **5¢ Brown, Re-Issue**, no gum, beautifully centered with lovely warm shade, **fresh & Extremely Fine (Only 672 sold)**; with 1983 P.F. certificate.  
 Scott No. **105** . . . . . \$1,150 for no gum

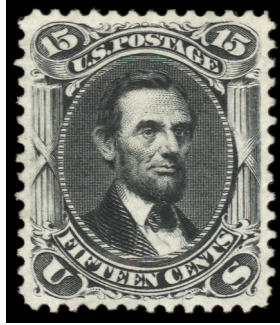


- 4074 (\*) **10¢ Green, Re-Issue**, no gum, bright, fresh color with huge margins, **Very Fine and choice**; with 1992 P.F. & 2004 P.S.E. certificates, latter **Graded VF-XF 85 (SMQ \$2,000)**.  
 Scott No. **106** . . . . . \$1,400 for no gum



- 4075 (\*) **12¢ Black, Re-Issue**, no gum, intense color, **fresh & Extremely Fine**, a lovely example of this rare stamp (**Only 389 sold**); with 1986 P.F. & 2002 P.S.E. certificates, latter **Graded XF 90 (SMQ \$3,500)**.  
 Scott No. **107** . . . . . \$1,750 for no gum

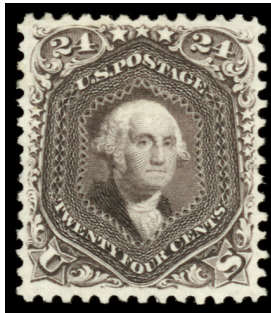
**A Stunning 15¢ Black, Re-Issue Graded XF-Superb 95 by the P.S.E.**



- 4076 (\*) **15¢ Black, Re-Issue**, no gum, sharp impression with jet black color, virtually perfect centering, **Extremely Fine to Superb (Only 397 sold)**; with 1969 P.F. & 2002 P.S.E. certificates, latter **Graded XF-Superb 95 (SMQ \$5,000)**.  
Scott No. **108** . . . . . \$2,100 for no gum

A GORGEOUS GEM, WHICH IS ONE OF ONLY FOUR EXAMPLES TO ACHIEVE THIS GRADE IN ANY MINT STATE.

**A Superb 24¢ Dark Violet, Re-Issue Graded 98 by the P.S.E.**



- 4077 (\*) **24¢ Dark Violet, Re-Issue**, no gum, sharp impression of bright paper, rich, fresh color, **Superb (Only 346 sold)**; with 2001 A.P.S. & 2002 P.S.E. certificates, latter **Graded Superb 98 (SMQ \$10,000)**.  
Scott No. **109** . . . . . \$2,750 for no gum

A SUPERB GEM WHICH IS THE SOLE EXAMPLE TO ACHIEVE THIS GRADE, IN ANY STATE, MINT OR USED.



- 4078 (\*) **30¢ Brownish Orange, Re-Issue**, no gum, vibrant rich color with full, complete perforations, bright color, **Very Fine to Extremely Fine (Only 346 sold)**; with 2023 P.S.E. certificate **Graded VF-XF 85 (SMQ \$3,600)**.  
Scott No. **110** . . . . . \$2,800 for no gum

A LOVELY STAMP WITH ONLY TWO MINT EXAMPLES GRADED HIGHER, ONE WITH NO GUM AND ONE WITH O.G.

**An Outstanding 90¢ Blue, Re-Issue Graded XF-Superb 95 by the P.S.E.**



- 4079 (\*) **90¢ Blue, Re-Issue**, no gum, almost perfect centering with large margins, bright, fresh color, **Extremely Fine to Superb (Only 317 sold)**; with 1982 P.F. & 2002 P.S.E. certificates, latter **Graded XF-Superb 95 (SMQ \$7,350)**.  
Scott No. **111** . . . . . \$3,500 for no gum

ONE OF ONLY THREE EXAMPLES TO ACHIEVE THIS GRADE, WITH NONE HIGHER IN ANY STATE, MINT OR USED.

1869 Pictorial Issue



4080



4081

- 4080 \* **1¢ Buff**, large part o.g., fresh color, **Very Fine**.  
 Scott No. **112** . . . . . \$575
- 4081 \* **2¢ Brown**, the P.F. calls this previously hinged, however it looks never hinged, Post Office fresh, **Very Fine and attractive**; with 1996 P.F. certificate.  
 Scott No. **113** . . . . . \$500



- 4082 o **6¢ Ultramarine**, light unobtrusive cork cancel, **fresh & Very Fine, a very pretty single**; with 1999 P.F. certificate.  
 Scott No. **115** . . . . . \$225



- 4083 o **12¢ Green**, segmented cork and red London cds, beautifully centered, **Extremely Fine and choice**; with 1989 P.F. certificate.  
 Scott No. **117** . . . . . \$130



- 4084 o **15¢ Brown & Blue, Type I**, light duplex cancel, well centered with bright colors, **an Extremely Fine example of the 15¢ Type I**; with 1986 P.F. certificate.  
 Scott No. **118** . . . . . \$850



- 4085 o **15¢ Brown & Blue, Type II**, very light cancel, beautifully centered with large margins, **an Extremely Fine gem**; with 1996 P.F. certificate.  
 Scott No. **119** . . . . . \$190



- 4086 o **24¢ Green & Violet**, neat segmented cork cancel, Post Office fresh colors, beautifully centered, **Very Fine to Extremely Fine, gorgeous stamp**; with 1989 P.F. certificate.  
 Scott No. **120** . . . . . \$650



- 4087 o     **30¢ Ultramarine & Carmine**, circle of wedges cancel, well centered with large margins, **Extremely Fine**; with 1987 P.F. certificate.  
Scott No. **121** . . . . . \$450

**A Handsome 1869 90¢ Carmine & Black in Choice Condition**



- 4088 o     **90¢ Carmine & Black**, light cancel, bright fresh colors, beautifully centered with large margins, **an Extremely Fine gem**; with 1991 P.F. certificate.  
Scott No. **122** . . . . . \$1,900

A STUNNING EXAMPLE OF THIS EVER POPULAR 19TH CENTURY HIGH VALUE.

1875 Re-Issue of the 1869 Pictorial Issue



- 4089 (\*) **1¢ Buff, Re-Issue**, no gum, deep color on fresh white paper, **Very Fine and choice**; with 1992 P.F. certificate.  
 Scott No. **123** . . . . . \$220



- 4090 (\*) **2¢ Brown, Re-Issue**, no gum, beautifully centered, **fresh & Extremely Fine**; with 1991 P.F. certificate.  
 Scott No. **124** . . . . . \$250



- 4091 \* **3¢ Blue, Re-Issue**, o.g., very lightly hinged, fresh color, well centered with full perforations, **Very Fine and choice**; with 2005 P.F. certificate.  
 Scott No. **125** . . . . . \$5,000

A WONDERFUL EXAMPLE OF THIS RARE 1869 PICTORIAL RE-ISSUE.



- 4092 \* **6¢ Blue, Re-Issue**, large part o.g., bright color, **F.-V.F. and attractive**; with 1987 P.F. certificate.  
 Scott No. **126** . . . . . \$1,900



- 4093 (\*) **10¢ Yellow, Re-Issue**, no gum, well centered with bold color, **Extremely Fine and choice**; with 1998 P.F. certificate.  
 Scott No. **127** . . . . . \$750 for no gum



- 4094 (\*) **12¢ Green, Re-Issue**, no gum, deep, rich color, well centered with large margins, **Extremely Fine and attractive**; with 2000 P.F. certificate.  
 Scott No. **128** . . . . . \$1,000 for no gum



- 4095 (\*) **15¢ Brown & Blue, Re-Issue, Type III**, no gum, radiant rich colors, beautifully centered, **Very Fine, a gorgeous gem**; with 2000 P.S.E. certificate.  
 Scott No. **129** . . . . . \$625 for no gum



- 4096 \* **24¢ Green & Violet, Re-Issue**, part o.g., beautifully centered with large margins, bright colors, **Extremely Fine**; with 1978 P.F. certificate.  
 Scott No. **130** . . . . . \$2,000



4097 (\*) **30¢ Ultramarine & Carmine, Re-Issue**, no gum, virtually perfect centering, bright colors, **Extremely Fine**; with 1988 P.F. certificate.

Scott No. 131 . . . . . \$1,100 for no gum

A GORGEOUS EXAMPLE OF THE 30¢ PICTORIAL RE-ISSUE.

**A Superb Gem of the 90¢ Carmine & Black, Re-Issue**



4098 (\*) **90¢ Carmine & Black, Re-Issue**, no gum, perfectly centered with sharp, deeply etched impression, Post Office color & freshness, **Superb, a stunning gem**; with 1988 P.F. certificate.

Scott No. 132 . . . . . \$1,750 for no gum

ONE OF THE FINEST KNOWN EXAMPLES OF THIS POPULAR 19TH CENTURY HIGH VALUE.



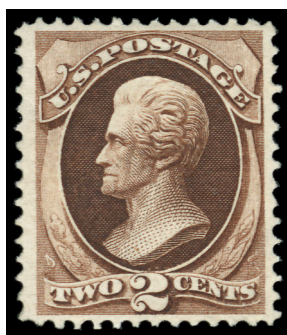
4099 \* **1¢ Buff, Re-Issue**, o.g., lightly hinged, **fresh & F.-V.F.**; with 1987 P.F. certificate.

Scott No. 133 . . . . . \$350

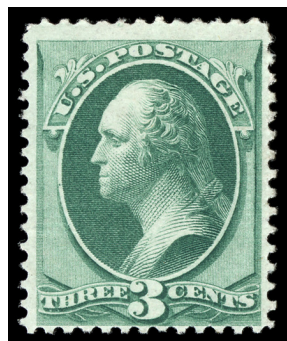
1870-1871 National Bank Note Co. Issue, Grilled



- 4100 o **1870, 1¢ Ultramarine, H. Grill**, indistinct red cancel (which is probably a New York Foreign Mail) & a portion of red “PD” in circle, large even margins, well centered, **Extremely Fine and attractive**; with 1999 P.F. certificate.  
 Scott No. **134** . . . . . \$200



- 4101 \* **1870, 2¢ Red Brown, H. Grill**, o.g., lightly hinged, deep, fresh color, well centered, **Very Fine and attractive**.  
 Scott No. **135** . . . . . \$1,000



- 4102 \* **1870, 3¢ Green, H. Grill, Split Grill**, o.g., lightly hinged, **fresh & Fine**.  
 Scott No. **136** . . . . . \$575



- 4103 o **1870, 6¢ Carmine, H. Grill**, neat segmented cork cancel, vivid fresh color, **Very Fine and choice**; with 1995 P.F. certificate.  
 Scott No. 137 . . . . . \$425



- 4104 o **1871, 7¢ Vermilion, H. Grill**, neat segmented cork cancel, deep color, **Extremely Fine**; with 1994 P.F. certificate.  
 Scott No. 138 . . . . . \$525



- 4105 o **1870, 10¢ Brown, H. Grill**, cork cancel, deep, deep color, **F.-V.F.**; with 1994 P.F. certificate.  
 Scott No. 139 . . . . . \$800

**An Outstanding 1870, 12¢ Dull Violet, H. Grill in Choice Condition**



- 4106 o    **1870, 12¢ Dull Violet, H. Grill**, light target cancel, well centered with large margins, strong color, **an Extremely Fine gem**; with 1999 P.F. certificate.  
Scott No. **140** . . . . . \$3,750

A SUPERB USED EXAMPLE OF THE 1870 12¢ NATIONAL BANK NOTE COMPANY GRILLED ISSUE. THIS IS CERTAINLY ONE OF THE FINEST IN EXISTENCE.



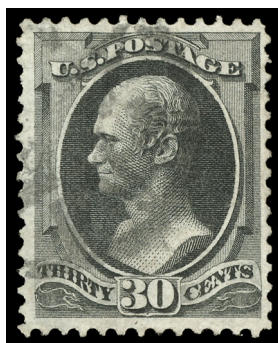
- 4107 o    **1870, 15¢ Orange, H. Grill**, light strike of New York Foreign Mail “Fouled Anchor” cancel, well centered with bright color, light strike of New York Foreign Mail “Fouled Anchor”, **Very Fine and choice**; with 1992 P.F. certificate.  
Scott No. **141** . . . . . \$1,500

A LOVELY EXAMPLE WITH THIS FANCY CANCELLATION LEAVING THE PORTRAIT UNOBSTRUCTED.



- 4108 o     **1870, 24¢ Purple, H. Grill**, neat segmented cork cancel, lovely deep pastel shade on bright fresh paper, nicely centered with full perforations all around, **Very Fine and choice**; with 1995 P.F. & 1994 A.P.S. certificates.  
Scott No. **142** . . . . . \$6,500

THIS IS A STUNNING EXAMPLE OF THIS RARE STAMP, GIVEN THE COLOR AND FRESHNESS OF THIS GEM.



- 4109 o     **1870, 30¢ Black, H. Grill**, light strike of New York Foreign Mail cancel, nice centering, light cancellation, **Very Fine and attractive**; with 1978 & 2002 P.F. certificates.  
Scott No. **143** . . . . . \$3,750

*This is a difficult issue to obtain in sound condition with good centering.*

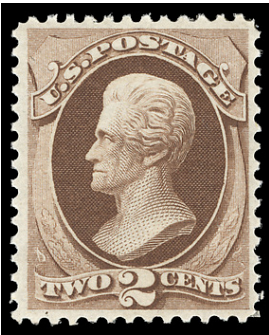


- 4110 o     **1870, 90¢ Carmine, H. Grill**, segmented cancel, deep, fresh color, **Very Fine and rare**; with 1982 & 1996 P.F. certificates.  
Scott No. **144** . . . . . \$2,250

1870-1871 National Bank Note Co. Issue,  
Without Grill



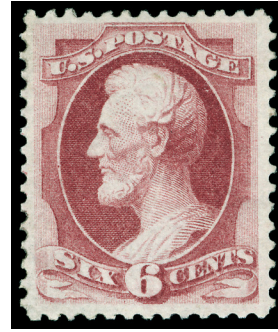
- 4111 \* **1870, 1¢ Ultramarine**, o.g., very lightly hinged, fresh color, **Very Fine and attractive**; with 1993 & 2005 P.F. certificates.  
Scott No. **145** . . . . . \$650



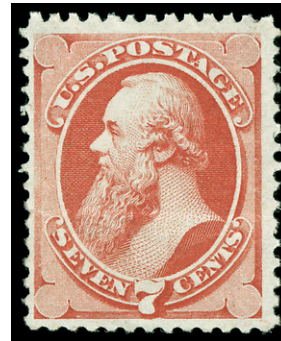
- 4112 \* **1870, 2¢ Red Brown**, o.g., previously hinged, Post Office fresh, **Very Fine**; with 1990 P.F. certificate for block.  
Scott No. **146** . . . . . \$350



- 4113 \* **1870, 3¢ Green**, o.g., lightly hinged, well centered, bright color, **Extremely Fine**; with 1999 P.F. certificate.  
Scott No. **147** . . . . . \$200



- 4114 \* **1870, 6¢ Carmine**, o.g., lightly hinged, deep color, **Very Fine and choice**, a lovely example of this Post Office fresh mint stamp; with 1984 & 1997 P.F. certificates.  
Scott No. **148** . . . . . \$900



- 4115 \* **1871, 7¢ Vermilion**, slightly disturbed o.g., bright fresh color, **F.-V.F.**.  
Scott No. **149** . . . . . \$900



- 4116 o **1870, 12¢ Dull Violet**, bold red New York Foreign Mail Star cancellation, rich, fresh color, perfectly centered, **a Superb gem with this attractive cancel**; with 2000 P.F. certificate.  
Scott No. **151** . . . . . \$215



4117



4118



4119

- 4117 o **1870, 15¢ Bright Orange**, light target cancel, well centered, light target cancel, **Very Fine**.  
 Scott No. **152** . . . . . \$225
- 4118 o **1870, 24¢ Purple**, lovely red New York Foreign Mail cancel, **Very Fine and attractive**; with 1989 P.F. certificate.  
 Scott No. **153** . . . . . \$240
- 4119 o **1870, 30¢ Black**, red New York Foreign Mail cancel, beautifully centered with fresh color, **an Extremely Fine gem**, *ex-V. Morris*; with 1992 P.F. certificate.  
 Scott No. **154** . . . . . \$350

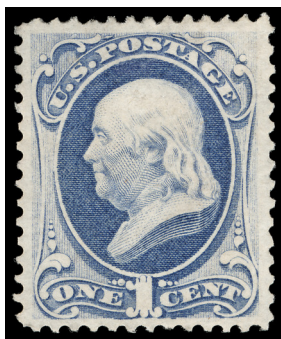
**A Striking Example of the 1870 90¢ Carmine**



- 4120 o **1870, 90¢ Carmine**, perfect strike of New York Foreign Mail cancel, well centered, bright color, **Extremely Fine**; with 1986 P.F. certificate.  
 Scott No. **155** . . . . . \$350

A WONDERFUL GEM WHICH ONCE GRACED THE VERNON MORRIS COLLECTION.

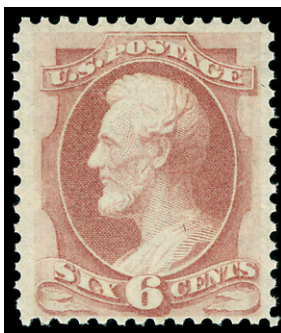
1873-1875 Continental Bank Note Co. Issue



- 4121 \* **1873, 1¢ Ultramarine**, o.g., lightly hinged, **fresh & Very Fine**; with 2004 P.F. certificate.  
 Scott No. **156** . . . . . \$200



- 4122 \* **1873, 2¢ Brown**, o.g., lightly hinged, deep, rich color, Post Office fresh, **F.-V.F.**  
 Scott No. **157** . . . . . \$325



- 4123 \*\* **1873, 6¢ Dull Pink**, o.g., never hinged, **fresh & Fine**, a tough stamp to find never hinged.  
 Scott No. **159** . . . . . \$375 for hinged



- 4124 \* **1873, 10¢ Brown**, full o.g., which appears never hinged, but slightly sweated, lovely fresh Post Office color, **F.-V.F. and attractive**.  
 Scott No. **161** . . . . . \$800



- 4125 o **1873, 12¢ Blackish Violet**, attractive **red NYFM** cancel, deep, rich color, perfectly centered, **Extremely Fine to Superb**, a lovely gem.  
 Scott No. **162** . . . . . \$155



- 4126 o **1873, 15¢ Yellow Orange**, beautifully struck **Pinwheel** cancel, large margins, **Very Fine and attractive**; with 1981 P.F. certificate.  
 Scott No. **163** . . . . . \$150



- 4127 o     **1873, 30¢ Gray Black**, very light cancel, well centered with large margins, **fresh & Extremely Fine**, *ex-V. Morris*; with 1994 P.F. certificate.  
Scott No. **165** . . . . . \$135



- 4128 o     **1873, 90¢ Rose Carmine**, oval registry cancel, nicely centered with fresh color, **Extremely Fine and choice**; with 1985 P.F. certificate.  
Scott No. **166** . . . . . \$300

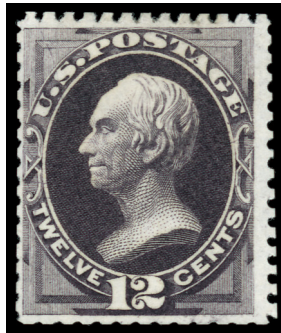
### 1875 “Hard Paper” Special Printings



- 4129(\*) **1875, 7¢ Reddish Vermilion, C.B.N.C. “Hard Paper” Special Printing**, without gum as issued, vibrant color, extraordinarily well-centered with full perforations all around, bright and fresh paper, **Very Fine and choice**; signed E. Stern, with 2000 & 2006 P.F. certificates, the latter **Graded (VF 80)**.  
Scott No. **171** . . . . . \$4,250

A BEAUTIFUL EXAMPLE OF THE 1875 7¢ CONTINENTAL BANK NOTE COMPANY SPECIAL PRINTING. ONLY A HANDFUL EXIST IN THIS SUPERB CONDITION WITH INTACT PERFORATIONS.

*Nearly all the Continental Special Printings were separated by scissors affecting perforations on at least one side. This stamp with full perforations is one of the few that escaped this procedure. It is believed that approximately 75 examples of this Special Printing exist.*



- 4130(\*) **1875, 12¢ Dark Violet, C.B.N.C. “Hard Paper” Special Printing**, without gum as issued, scissor cut with perforations showing on all four sides, bright color, **F.-V.F.**.  
Scott No. **173** . . . . . \$5,500

ONE OF ONLY A HANDFUL OF THE SPECIAL PRINTING SHOWS COMPLETE PERFORATION ON ALL FOUR SIDES.

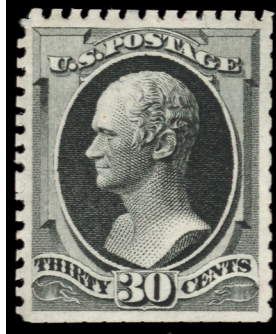
One of the Finest Known Special Printing in Existence



- 4131 (\*) **1875, 24¢ Dull Purple, C.B.N.C. “Hard Paper” Special Printing**, without gum as issued, beautifully centered with full perforations on all four sides, lovely purple shade, **Extremely Fine and choice**; with 1991, 2001 P.F. & 2005 P.S.E. certificates, last **Graded XF 90 (SMQ \$16,000)**.  
Scott No. **175** . . . . . \$3,500

ONE OF THE FINEST KNOWN EXAMPLES OF THIS RARE CONTINENTAL BANK NOTE COMPANY SPECIAL PRINTING. ONLY TWO EXAMPLES GRADED HIGHER, ONE AT 95 AND ONE AT 95J.

*The rarity of this Gem can not be overstated as the majority of these Special Printings were off centered and the perforations trimmed off on one or more sides. A far inferior example with perfs on all four sides sold in 2021 for over \$28,000.*



- 4132 (\*) **1875, 30¢ Greenish Black, C.B.N.C. “Hard Paper” Special Printing**, without gum as issued, usual scissor cut perfs, perfectly centered, intense shade and impression on bright paper, **Extremely Fine and choice**; with 1993 & 2004 P.F. certificates.  
 Scott No. **176**. . . . . \$12,000

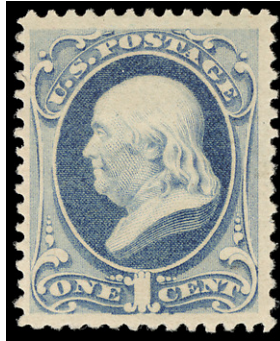
A GORGEOUS EXAMPLE OF THE 30-CENT 1875 CONTINENTAL BANK NOTE COMPANY SPECIAL PRINTING.



- 4133 (\*) **1875, 90¢ Violet Carmine, C.B.N.C. “Hard Paper” Special Printing**, without gum as issued, beautiful bright color on fresh paper, scissors-separated as usual leaving full and intact perfs on two sides, **Very Fine and choice**, *ex-Chapin*; with 1974 and 2003 P.F. certificates.  
 Scott No. **177**. . . . . \$18,000

A LOVELY EXAMPLE OF THE 90-CENT 1875 CONTINENTAL SPECIAL PRINTING. APPROXIMATELY 48 ARE BELIEVED TO EXIST.

1879 American Bank Note Co. Issue



- 4134 \* **1879, 1¢ Dark Ultramarine**, o.g., previously hinged, **Very Fine and attractive**.  
 Scott No. 182 . . . . . \$200



4135

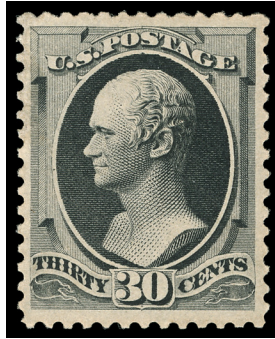


4136

- 4135 \* **1879, 5¢ Blue**, o.g., very lightly hinged, well centered, **Extremely Fine and choice**; with 1993 P.F. certificate.  
 Scott No. 185 . . . . . \$500
- 4136 \* **1879, 6¢ Pink**, o.g., very lightly hinged, Post Office freshness, corner bend at bottom right (not mentioned on cert.), **otherwise Very Fine**; with 1979 P.F. certificate.  
 Scott No. 186 . . . . . \$900



- 4137 \* **1879, 10¢ Brown, with Secret Mark**, o.g., lightly hinged, well centered with bright color, **Very Fine, a very scarce stamp in this choice condition**; with 1995 P.F. certificate.  
 Scott No. 188 . . . . . \$1,800



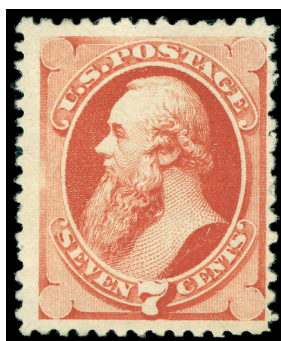
- 4138 \* **1879, 30¢ Full Black**, o.g., lightly hinged, beautifully centered within large margins, deep color, **Extremely Fine**, a gorgeous mint example; with 1983 & 1991 P.F. certificates.  
Scott No. **190** . . . . . \$850



- 4139 \* **1879, 90¢ Carmine**, o.g., very lightly hinged, outstanding centering and margins, deep color, **Extremely Fine**; with 1977 & 1997 P.F. certificates.  
Scott No. **191** . . . . . \$2,100

A FRESH AND CHOICE EXAMPLE OF THE 1879 90¢ AMERICAN BANK NOTE COMPANY ISSUE WHICH IS UNDOUBTEDLY ONE OF THE FINEST KNOWN.

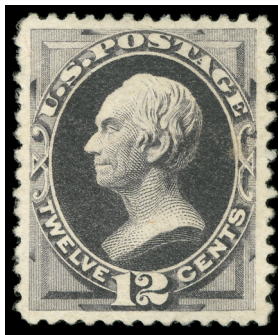
1880 “Soft Paper” Special Printings



- 4140 (\*) **1880, 7¢ Scarlet Vermilion, A.B.N.C. “Soft Paper” Special Printing**, without gum as issued, bright, fresh color, **Fine**; with 1957 & 2003 P.F. certificates.  
Scott No. **196** . . . . . \$6,750

FRESH AND FINE EXAMPLE OF THE 7¢ 1880 AMERICAN BANK NOTE COMPANY SPECIAL PRINTING.

**One of the Finest 1880 12¢ Blackish Purple, “Soft Paper” Special Printings**



- 4141 (\*)    **1880, 12¢ Blackish Purple, A.B.N.C. “Soft Paper” Special Printing**, without gum as issued, beautifully centered with rich color, **Extremely Fine**, *ex-M. Lutwak*; with 1947, 1976 & 1998 P.F. certificates.  
Scott No. **198** . . . . . \$9,500

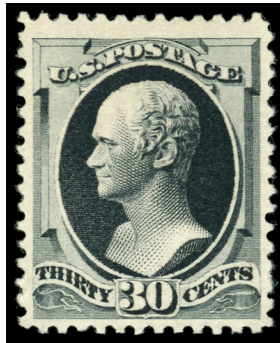
AN OUTSTANDING EXAMPLE OF THIS SPECIAL PRINTING RARITY, WHICH IS ONE OF THE FINEST KNOWN.



- 4142 (\*) **1880, 24¢ Dark Violet, A.B.N.C. “Soft Paper” Special Printing**, without gum as issued, deep, fresh color on bright paper, **Fine and rare**; with 1950 & 2007 P.F. certificates, the latter **Graded (F 70)**.  
Scott No. **200** . . . . . \$9,000

A LOVELY AND SOUND EXAMPLE OF THIS ELUSIVE SPECIAL PRINTING.

**A Gem 1880 30¢ Greenish Black, “Soft Paper” Special Printing**



- 4143 (\*) **1880, 30¢ Greenish Black, A.B.N.C. “Soft Paper” Special Printing**, stitch watermark at right, rich color on crisp paper, wide margins, without gum as issued, **Extremely Fine**, *ex-Frank B. Allen*; with 1950 and 2005 P.F. certificates.  
Scott No. **201**. . . . . \$22,500

A SUPERB EXAMPLE OF THE 1880 30¢ AMERICAN BANK NOTE COMPANY SPECIAL PRINTING. THIS STAMP RANKS AMONG THE FINEST IN EXISTENCE.

*The Philatelic Foundation records approximately 45 certified copies of Scott 201. Sound and centered examples are extremely rare — 15 have faults and of the sound copies very few compare favorably to the example offered here.*



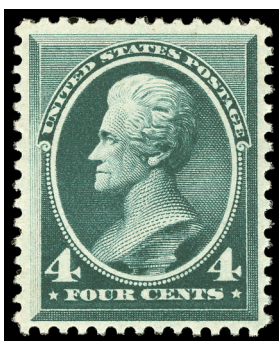
- 4144 (\*)    **1880, 90¢ Dull Carmine, A.B.N.C. “Soft Paper” Special Printing**, without gum as issued, deep red shade, **Fine and attractive**; with 1946 P.F. certificate (#280) and **2006 P.S.E. Graded certificate (F 70)**.  
Scott No. **202**. . . . . \$30,000

A WONDERFUL RARITY OF WHICH THERE ARE APPROXIMATELY 42 KNOWN EXAMPLES, MANY OF WHICH ARE DEFECTIVE.

1881-1888 American Bank Note Co. Issues



- 4145 \* **1882, 6¢ Rose**, o.g., very lightly hinged, Post Office fresh, **Very Fine and attractive**.  
Scott No. 208 . . . . . \$825



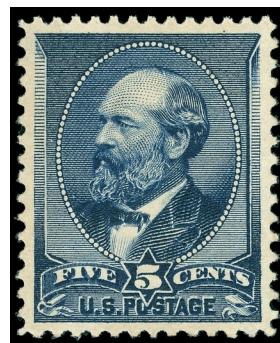
- 4146 \* **1883, 4¢ Blue Green**, o.g., lightly hinged, bright, fresh color, **Extremely Fine**.  
Scott No. 211 . . . . . \$225

1883 Special Printing



- 4147 \*\* **1883, 2¢ Pale Red Brown, Special Printing**, o.g., never hinged, well centered & Post Office fresh, **Extremely Fine**; with 1987 P.F. certificate.  
Scott No. 211B . . . . . \$1,000

1881-1888 American Bank Note Co. Issues



- 4148 \* **1888, 5¢ Indigo**, o.g., barest trace of hinge, well centered, **fresh & Extremely Fine**, a lovely mint example.  
Scott No. 216 . . . . . \$210



- 4149 \*\* **1888, 30¢ Orange Brown**, o.g., never hinged (natural gum bend), **Very Fine and choice**.  
Scott No. 217 . . . . . \$1,075



- 4150 \* **1888, 90¢ Purple**, o.g., lightly hinged, beautifully centered & fresh color, **Extremely Fine and choice**; with 1993 P.F. certificate.  
Scott No. 218 . . . . . \$800

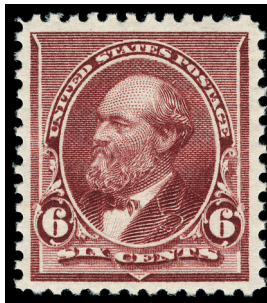
1890 A.B.N.C. Small Bank Note Issue



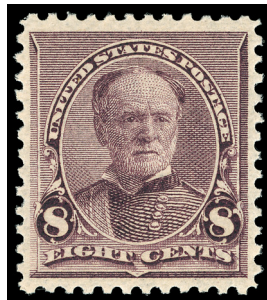
- 4151 \* **1890, 2¢ Lake**, o.g., very lightly hinged, Post Office fresh, **Extremely Fine, a difficult stamp to find in choice condition.**  
Scott No. **219D** . . . . . \$160



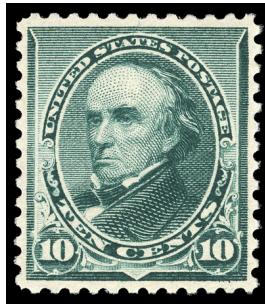
- 4152 \*\* **1890, 4¢ Dark Brown**, o.g., never hinged, bright color, **Very Fine and choice.**  
Scott No. **222** . . . . . \$240



- 4153 \*\* **1890, 6¢ Brown Red**, o.g., never hinged, Post Office fresh, **Very Fine and choice.**  
Scott No. **224** . . . . . \$160



- 4154 \*\* **1893, 8¢ Lilac**, o.g., never hinged, beautifully centered, **an Extremely Fine gem.**  
Scott No. **225** . . . . . \$135



- 4155 \*\* **1890, 10¢ Green**, o.g., never hinged, well centered, **Extremely Fine and attractive**.  
 Scott No. **226** . . . . . \$475



- 4156 \*\* **1890, 15¢ Indigo**, o.g., never hinged, beautifully centered amid large even margins, rich, fresh color, **Extremely Fine and choice**; with 1986 P.F. certificate.  
 Scott No. **227** . . . . . \$550

A VERY DIFFICULT STAMP TO FIND IN THIS GEM NEVER HINGED CONDITION.

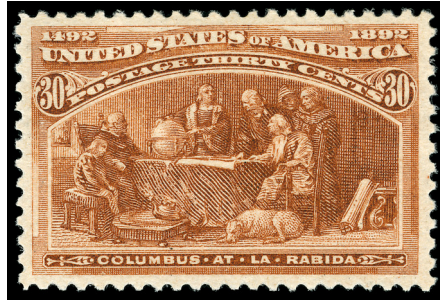


- 4157 \*\* **1890, 30¢ Black**, o.g., never hinged, beautifully centered, **Extremely Fine and choice**.  
 Scott No. **228** . . . . . \$900



- 4158 \* **1890, 90¢ Orange**, o.g., very lightly hinged, well centered with large margins, **an Extremely Fine gem, a one-in-a-million example**; with 1986 P.F. certificate.  
 Scott No. **229** . . . . . \$475

1893 Columbian Issue



- 4159 \* **1893, 30¢ Columbian**, o.g., lightly hinged, fresh & Extremely Fine.  
 Scott No. 239 . . . . . \$225



- 4160 \*\* **1893, 50¢ Columbian**, o.g., never hinged, Post Office fresh & beautifully centered, an Extremely Fine gem.  
 Scott No. 240 . . . . . \$1,400

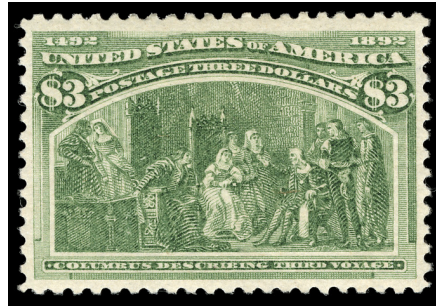
A WONDERFUL NEVER HINGED EXAMPLE OF THE 50¢ COLUMBIAN.



- 4161 \* **1893, \$1 Columbian**, o.g., very lightly hinged, lovely bright color, Very Fine and choice.  
 Scott No. 241 . . . . . \$1,000

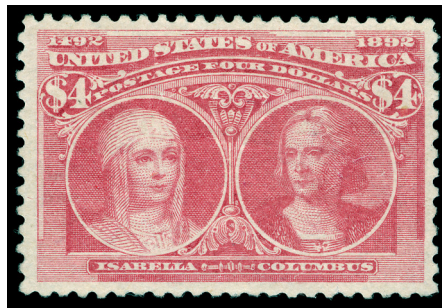


- 4162 \* **1893, \$2 Columbian**, o.g., lightly hinged, Post Office fresh, attractive & F.-V.F.; with 1976 P.F. certificate.  
 Scott No. 242 . . . . . \$1,100



- 4163 \* **1893, \$3 Columbian**, o.g., lightly hinged, beautifully centered with vivid fresh color, **Extremely Fine**, a lovely gem; with 1981 P.F. certificate.  
 Scott No. **243** . . . . . \$1,500

A WONDERFUL EXAMPLE IN CHOICE CONDITION OF THIS COLUMBIAN HIGH VALUE.



- 4164 \* **1893, \$4 Columbian, Rose Carmine Color**, o.g., lightly hinged, lovely pastel shade, well centered, **fresh & Extremely Fine**; with 1981 P.F. certificate.  
 Scott No. **244a**. . . . . \$2,000



- 4165 \* **1893, \$5 Columbian**, o.g., lightly hinged, Post Office fresh, **Very Fine and attractive**; with 1981 P.F. certificate.  
 Scott No. **245** . . . . . \$2,400

1894 Bureau Issue, Unwatermarked



- 4166 \*\* **1894, 2¢ Carmine Lake, Type I**, o.g., never hinged, bright color, **Very Fine and choice**; with 1988 P.F. certificate.  
Scott No. **249** . . . . . \$500



- 4167 \*\* **1894, 2¢ Carmine, Type II**, o.g., never hinged, large margins & well centered, **fresh & Extremely Fine**; with 1992 P.S.E. certificate.  
Scott No. **251** . . . . . \$1,200

ONE OF THE FINEST EXAMPLES OF THIS RARE STAMP IN PRISTINE POST OFFICE CONDITION.



- 4168 \*\* **1894, 10¢ Dark Green**, o.g., never hinged (tiny natural gum skips & trivial bend), beautifully centered with fresh color, **Extremely Fine**; with 1989 P.F. certificate.  
Scott No. **258** . . . . . \$850



- 4169 \* **1894, 15¢ Dark Blue**, o.g., very lightly hinged, beautifully centered with huge margins, deep color, **an Extremely Fine gem**; with 1999 P.F. certificate.  
Scott No. **259** . . . . . \$275

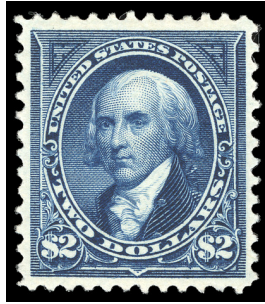


- 4170 \* **1894, \$1 Black, Type I**, o.g., lightly hinged, **Very Fine and attractive**.  
Scott No. **261** . . . . . \$1,000



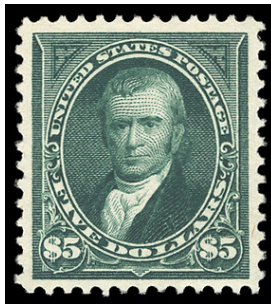
- 4171 \* **1894, \$1 Black, Type II**, o.g., lightly hinged, nicely centered amid large margins, deep color, **Extremely Fine**; with 1980 & 1996 P.F. certificates.  
Scott No. **261A** . . . . . \$2,100

A WONDERFUL GEM IN MINT POST OFFICE FRESH CONDITION.



- 4172 \* **1894, \$2 Bright Blue**, o.g., very lightly hinged, beautifully centered with vibrant fresh color, **an Extremely Fine gem**; with 1989 P.F. certificate.  
Scott No. **262** . . . . . \$2,750

A BEAUTIFUL ORIGINAL-GUM EXAMPLE OF THE 1894 \$2.00 UNWATERMARKED BUREAU ISSUE.

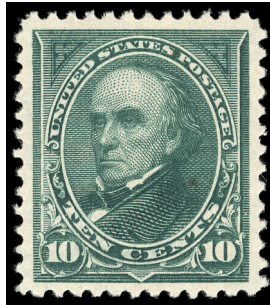


- 4173 \* **1894, \$5 Dark Green**, slightly disturbed o.g., lovely single with bright, fresh color, **Very Fine and choice**; with 1993 P.F. certificate for block (top left stamp).  
Scott No. **263** . . . . . \$4,000

1895-1903 Bureau Issues, Watermarked



- 4174 \*\* **1895, 2¢ Carmine, Types II & III**, combination pair, o.g., never hinged, bright & fresh, **F.-V.F.**  
 Scott No. **266-267** . . . . . \$600



- 4175 \*\* **1895, 10¢ Dark Green**, o.g., never hinged, outstanding centering amid jumbo margins, **Extremely Fine**; with 1989 P.F. certificate.  
 Scott No. **273** . . . . . \$280

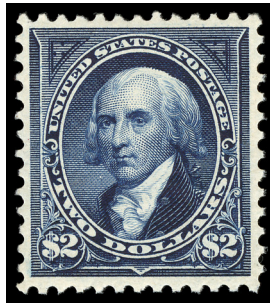
A STUNNING GEM IN POST OFFICE CONDITION.



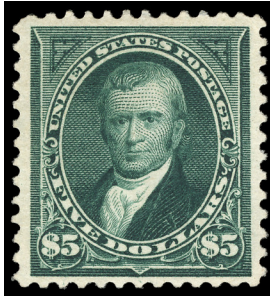
- 4176 \* **1895, \$1 Black, Type I**, o.g., lightly hinged, nicely centered, **fresh & Very Fine**; with 1996 P.F. certificate.  
 Scott No. **276** . . . . . \$600



- 4177 \* **1895, \$1 Black, Type II**, o.g., lightly hinged, well centered, **Extremely Fine**; with 1986 P.F. certificate.  
 Scott No. **276A** . . . . . \$1,250



- 4178 \* **1895, \$2 Bright Blue**, o.g., lightly hinged, well centered, bright color, **Very Fine and attractive**.  
 Scott No. **277** . . . . . \$900



- 4179 \* **1895, \$5 Dark Green**, o.g., lightly hinged, beautifully centered with large margins, bright, fresh color, **Extremely Fine**; with  
 1984 P.F. certificate.  
 Scott No. **278** . . . . . \$2,000

A GORGEOUS EXAMPLE OF THE \$5 MARSHALL ON WATERMARKED PAPER.



- 4180 B\* **1900, 2¢ Red, Type IV, Booklet Pane of 6**, o.g., lightly hinged, fresh & **Very Fine**.  
 Scott No. **279Bj** . . . . . \$500

### 1898 Trans-Mississippi Issue



- 4181 \* **1898, \$1 Trans-Miss.**, o.g., very lightly hinged, well centered with Post Office fresh color, **Extremely Fine**; signed Brun & indistinct pencil signature, with 1987 P.F. certificate.  
 Scott No. **292** . . . . . \$1,500



- 4182 \* **1898, \$2 Trans-Miss.**, o.g., previously hinged, bright, rich color, Post Office fresh, **Extremely Fine**; with 1992 P.F. certificate.  
 Scott No. **293** . . . . . \$1,900

A LOVELY EXAMPLE OF THIS POPULAR HIGH VALUE. RARELY IS THE \$2 TRANS-MISSISSIPPI FOUND WITH LARGE MARGINS AND CHOICE CENTERING.

1902-1908 Regular Issues



4183



4184

4183 B\* **1903, 1¢ Blue Green, Booklet Pane of 6, o.g., lightly hinged, outstanding centering with Post Office color, Extremely Fine and choice.**

Scott No. 300b . . . . . \$600

4184 B\*\* **1903, 2¢ Carmine, Booklet Pane of 6, o.g., never hinged, Post Office fresh, Very Fine and choice.**

Scott No. 301c. . . . . \$950



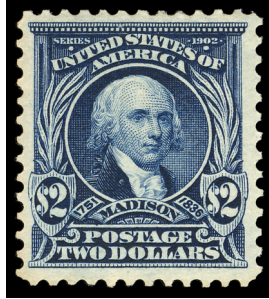
4185 \*\* **1903, 6¢ Claret, o.g., never hinged, well centered, Extremely Fine and choice.**

Scott No. 305 . . . . . \$150



4186 \* **1903, \$1 Black, o.g., lightly hinged, perfectly centered amid large margins, Extremely Fine to Superb, a gem of the first order; with 1989 P.F. certificate.**

Scott No. 311 . . . . . \$600



- 4187 \*\* **1903, \$2 Dark Blue**, o.g., never hinged, deep color on fresh paper, **Very Fine and choice**; with 1985 P.F. certificate.  
 Scott No. **312** . . . . . \$2,500
- A RARE NEVER HINGED 1902 \$2 MADISON HIGH VALUE.



- 4188 \* **1903, \$5 Dark Green**, o.g., very lightly hinged, well centered, deep color, **fresh & Extremely Fine**; with 2000 P.F. certificate.  
 Scott No. **313** . . . . . \$2,100



- 4189 \*\* **1908, 5¢ Blue, Imperf**, horizontal pair, o.g., never hinged (natural inclusion in margin between stamps), four large even margins, **Very Fine and attractive**.  
 Scott No. **315** . . . . . \$1,250



- 4190 \* **1908, 5¢ Blue, Experimental Coil, Perf 12 Horizontally**, pair, o.g., lightly hinged, rather well-centered with fresh color, **F.-V.F. example of this very rare coil pair**; Signed RHW Co (Weill), with 1957, 1999 & 2007 P.F. certificates.  
 Scott No. 317. . . . . \$15,000

*According to Johl, these first government coils were an experiment, and collectors were generally unaware of their existence. Sheets of 400 were printed and then perforated only in one direction. They were subsequently cut into strips of 20. The strips were then hand pasted together to form rolls. As such, they are almost always strongly off centered to one side.*



- 4191 \* **1908, 1¢ Blue Green, Experimental Coil, Perf 12 Vertically**, pair, o.g., lightly hinged, perfectly centered, deep green shade, **an Extremely Fine gem**; with photocopy of 1950 P.F. certificate and 1998 P.S.E. certificate.  
 Scott No. 318. . . . . \$11,000

THIS IS PERHAPS THE FINEST KNOWN PAIR OF THIS NOTORIOUSLY DIFFICULT ISSUE.



4192



4193



4194

- 4192 B\*\* **1903, 2¢ Carmine Rose, Type I, Booklet Pane of 6**, o.g., never hinged, very well centered, Post Office fresh, **Very Fine and choice**; with 1999 P.F. certificate.  
 Scott No. 319n . . . . . \$500
- 4193 B\*\* **1903, 2¢ Carmine, Type II, Booklet Pane of 6**, Position D with plate no. 4570 at top right, o.g., never hinged, well centered, **Very Fine and a very rare booklet pane**; with 1994 P.F. certificate.  
 Scott No. 319Fh. . . . . \$1,500
- 4194 B\*\* **1903, 2¢ Lake, Type II, Booklet Pane of 6**, o.g., never hinged, well centered, fresh color, **Very Fine and rare in this choice never hinged condition**.  
 Scott No. 319Fq. . . . . \$575



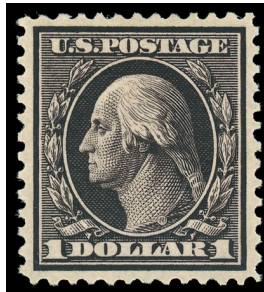
- 4195 \* **1908, 2¢ Carmine, Type II, Experimental Coil, Perf 12 Vertically**, pair, o.g., lightly hinged, bright, fresh color, well centered for this, **Fine**, written in pencil on reverse, *Ex Green*; with 1979 & 2004 P.F. certificates.  
 Scott No. 322. . . . . \$17,500

A HANDSOME EXAMPLE OF THIS EARLY 20TH CENTURY COIL RARITY.

1908-1910 Washington-Franklin Issue, DL Watermark



- 4196 \*\*    **1909, 10¢ Yellow**, o.g., never hinged, vibrant fresh color, **Very Fine and choice**.  
Scott No. 338 . . . . . \$165



- 4197 \*    **1909, \$1 Violet Brown**, o.g., lightly hinged, beautifully centered, deep color, **Extremely Fine to Superb, a gorgeous example**.  
Scott No. 342 . . . . . \$450



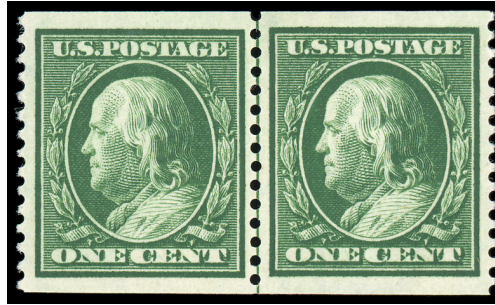
- 4198 \*\*    **1909, 2¢ Carmine, Vertical Coil**, pair, o.g., never hinged, vibrant color & Post Office fresh, **Very Fine and choice**; with 1977 P.F. certificate.  
Scott No. 349 . . . . . \$600



- 4199 \* **1910, 4¢ Orange Brown, Vertical Coil**, joint line pair, o.g., very lightly hinged, rich shade & well centered, **Very Fine and choice, a lovely line pair**; with 1986 P.F. certificate.  
 Scott No. **350** . . . . . \$1,175



- 4200 \*\*/ \* **1909, 5¢ Blue, Vertical Coil**, guide line pair, o.g., hinged at top, never hinged at bottom, deep, fresh color, **immaculate and Very Fine**; with 1982 P.F. certificate.  
 Scott No. **351** . . . . . \$1,075



- 4201 \* **1909, 1¢ Green, Horizontal Coil**, guide line pair, o.g., lightly hinged (light natural gum bend), deep color, **Very Fine**.  
 Scott No. 352 . . . . . \$825



- 4202 \* **1909, 4¢ Orange Brown, Horizontal Coil**, guide line pair, o.g., previously hinged, beautifully centered and rich color, **an Extremely Fine gem**; with 1990 P.F. certificate.  
 Scott No. 354 . . . . . \$1,400



- 4203 \* **1909, 5¢ Blue, Horizontal Coil**, guide line pair, o.g., previously hinged, deep color, **Extremely Fine and rare in this choice condition**; with photocopy of 1985 P.F. certificate for strip.  
 Scott No. 355 . . . . . \$1,500

**A Choice 1909 10¢ Yellow, Horizontal Coil Pair**



4204 \* **1909, 10¢ Yellow, Horizontal Coil**, pair, o.g., lightly hinged twice, very well centered with fresh color, few rejoined perfs at bottom (not mentioned on certs), **Extremely Fine**; with 1974 & 1995 P.F. certificates.  
 Scott No. **356** . . . . . \$8,250

*According to Johl (Volume 1, page 181), only 10,000 of the 10¢ Washington coil stamps were issued. They were made especially for a New York firm to send out advertising samples. Only a few rolls were sold to the firm, and the remaining rolls were distributed to some of the large post offices across the country. Dealers acquired several rolls, but because most contemporary collectors did not collect coils, many were used and destroyed.*

**1909 Bluish Paper Issue**



4205 \*     **1909, 3¢ Deep Violet, on Bluish Paper**, o.g., lightly hinged, well centered, **Very Fine and choice**; with 1994 P.F. certificate.  
Scott No. **359** . . . . . \$1,800

**A Well Centered Example of the Rare 1909 4¢ Orange Brown on Bluish Paper**



4206 \* **1909, 4¢ Orange Brown, on Bluish Paper**, o.g., previously hinged, well centered for this difficult issue, fresh color, **Very Fine and choice.**  
Scott No. **360**. . . . . \$27,500

ONE OF THE FINEST MINT EXAMPLE OF THE ELUSIVE 4¢ BLuish PAPER.

*H.F. Colman was a Washington, D.C. Stamp Dealer who was involved in numerous trades with the National Museum including the 1914 National Museum exchange, in which Mr. Colman received a very limited supply of the Bluish Papers including (12 copies) of the 4¢ and 8¢ values.*



- 4207 \* **1909, 5¢ Blue, on Bluish Paper**, o.g., lightly hinged, rich color on clearly blued paper, well centered, **Very Fine**; Small “HFC” (H. F. Colman) backstamp, with 1972 & 1997 P.F. certificates.  
 Scott No. **361** . . . . . \$6,500

A WONDERFUL EXAMPLE OF THE 5¢ BLUISH PAPER, WHICH IS THE RAREST OF ALL THE BLUISH PAPERS AFTER THE 4¢ AND 8¢ VALUES.

*H.F. Colman was a Washington, D.C. Stamp Dealer who was involved in numerous trades with the National Museum including the 1914 National Museum exchange, in which Mr. Colman received a very limited supply of the Bluish Papers including (12 copies) of the 4¢ and 8¢ values.*



- 4208 \* **1909, 6¢ Red Orange, on Bluish Paper**, o.g., lightly hinged, fresh and vivid color, extra wide margins and nearly perfect centering, **Extremely Fine**; Small “HFC” (H. F. Colman) backstamp, with 1989 & 2002 P.F. certificates.  
 Scott No. **362** . . . . . \$1,250

A WONDERFULLY CHOICE EXAMPLE OF THE 6-CENT BLUISH PAPER ISSUE.

*H.F. Colman was a Washington, D.C. Stamp Dealer who was involved in numerous trades with the National Museum including the 1914 National Museum exchange, in which Mr. Colman received a very limited supply of the Bluish Papers including (12 copies) of the 4¢ and 8¢ values.*



- 4209 \* **1909, 10¢ Yellow, on Bluish Paper**, o.g., very lightly hinged, well centered, vibrant color on deeply blued paper, **Extremely Fine and choice, a gem example**; with 2000 P.F. certificate.  
 Scott No. **364** . . . . . \$1,600



- 4210 \* **1909, 13¢ Blue Green, on Bluish Paper**, o.g., with relatively light hinging, rich color and proof-like impression on nicely blued paper, **Very Fine and choice**; with 1976 P.F. & 1999 P.S.E. certificates.  
 Scott No. **365** . . . . . \$2,600



- 4211 \* **1909, 15¢ Pale Ultramarine, on Bluish Paper**, o.g., lightly hinged, rich color, impressive centering with wide margins, **Very Fine and attractive**; with 1996 P.F. certificate.  
 Scott No. **366** . . . . . \$1,300

1910-1911 Washington-Franklin Issue, SL Watermark



4212



4213



4214

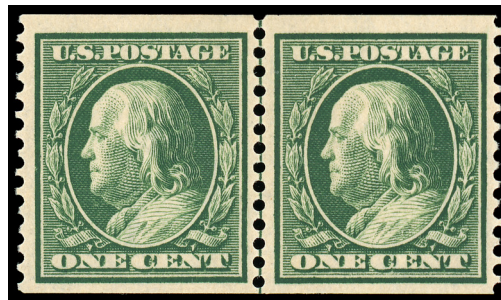
- 4212 \*\* **1911, 3¢ Deep Violet**, o.g., never hinged, well centered with large margins, bright color, **Extremely Fine and choice**.  
Scott No. 376 . . . . . \$40
- 4213 \*\* **1911, 5¢ Blue**, o.g., never hinged, large margins, rich color, **Extremely Fine**.  
Scott No. 378 . . . . . \$65
- 4214 \*\* **1911, 8¢ Olive Green**, o.g., never hinged, large even margins, Post Office fresh color, **Extremely Fine and choice, a beautiful stamp**.  
Scott No. 380 . . . . . \$200



- 4215 \*\* **1910, 1¢ Green, Vertical Coil**, guide line pair, o.g., never hinged, well centered, **fresh & Extremely Fine**.  
Scott No. 385 . . . . . \$1,000



- 4216 \*\*/ \* **1910, 2¢ Carmine, Vertical Coil**, pair, o.g., hinged at top, never hinged at bottom, deep, rich color, **Very Fine**, the never hinged stamp at the bottom is particularly choice.  
 Scott No. **386** . . . . . \$390



- 4217 \* **1910, 1¢ Green, Horizontal Coil**, guide line pair, o.g., neatly hinged once, well centered, **Extremely Fine and attractive**; with 1993 P.F. certificate.  
 Scott No. **387** . . . . . \$1,250

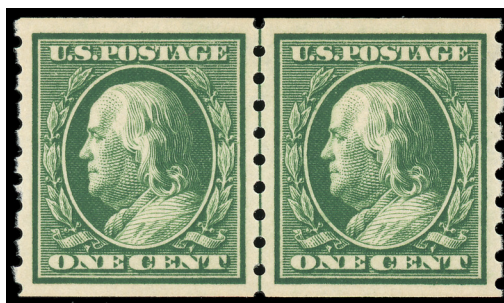
A VERY RARE PAIR IN THIS GEM CONDITION.



- 4218 \* **1910, 2¢ Carmine, Horizontal Coil**, pair (2mm spacing), o.g., very lightly hinged, rich shade & Post Office fresh, **Very Fine and rare**, *ex-Dr. Kornfeld*; with 1974 & 1987 P.F. certificates.  
 Scott No. **388** . . . . . \$3,750



- 4219 \*\* **1910, 2¢ Carmine, Vertical Coil**, guide line pair, o.g., never hinged, deep color, **fresh & Very Fine**; with 1981 P.F. certificate.  
 Scott No. 391 . . . . . \$575



- 4220 \*\* **1910, 1¢ Green, Horizontal Coil**, guide line pair, o.g., never hinged, beautifully centered, rich color, **Extremely Fine and choice**; with 1978 P.F. certificate.  
 Scott No. 392 . . . . . \$400

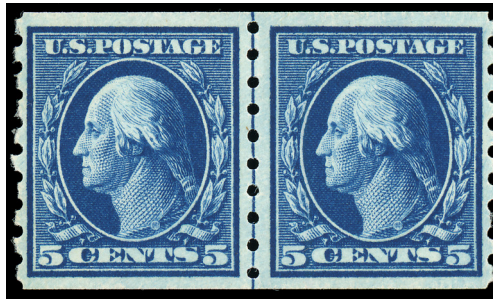


4221



4222

- 4221 \*\* **1911, 3¢ Deep Violet, Horizontal Coil**, guide line pair, o.g., never hinged, deep color, **Very Fine**; with 1977 S.P.A certificate.  
 Scott No. 394 . . . . . \$925
- 4222 \* **1912, 4¢ Brown, Horizontal Coil**, guide line pair, o.g., lightly hinged, **Very Fine and attractive**; with 1977 P.F. certificate.  
 Scott No. 395 . . . . . \$475



- 4223 \*\*/\* **1913, 5¢ Blue, Horizontal Coil**, guide line pair, o.g., very lightly hinged at left, never hinged at right, deep color, **Very Fine**; with 1976 P.F. certificate.  
Scott No. **396**

**1912-1914 Washington-Franklin Issue, SL Watermark, Perf. 12**



- 4224 \* **1914, 50¢ Violet, S.L. Watermark**, o.g., very lightly hinged, outstanding margins and centering, bright color, **Extremely Fine and attractive**; with 1992 P.S.E. certificate.  
Scott No. **421** . . . . . \$350

**1914-1915 Washington-Franklin Issue, SL Watermark, Perf.10**



4225



4226

- 4225 \*\* **1914, 30¢ Orange Red**, o.g., never hinged, intense color with beautiful centering, **an Extremely Fine gem**.  
Scott No. **439** . . . . . \$500

AN OUTSTANDING EXAMPLE OF THIS 30¢ WASHINGTON-FRANKLIN WHICH SHOULD GRADE VERY HIGH.

- 4226 \*\* **1915, 50¢ Violet**, o.g., never hinged (tiny natural gum skip), well centered, **fresh & Extremely Fine**.  
Scott No. **440** . . . . . \$1,100



- 4227 \* **1914, 2¢ Carmine, Horizontal Flat Plate Coil**, guide line pair, o.g., lightly hinged & Scott number in pencil on left stamp, vibrant color, **Very Fine and choice**; with 1982 P.F. certificate.  
 Scott No. **444** . . . . . \$300



- 4228 \*\* **1914, 3¢ Violet, Horizontal Flat Plate Coil**, pair, o.g., never hinged (trivial natural gum bend, not mentioned on cert.), gorgeous centering & color, **an Extremely Fine gem**; with 1989 P.F. certificate.  
 Scott No. **445** . . . . . \$1,100



- 4229 \* **1914, 4¢ Brown, Horizontal Flat Plate Coil**, guide line pair, o.g., lightly hinged, rich color, **Very Fine and attractive**; with 1984 P.F. certificate.  
 Scott No. **446** . . . . . \$700



- 4230 \*\* **1914, 5¢ Blue, Horizontal Flat Plate Coil**, guide line pair, o.g., never hinged, perfect centering with intense, rich color, **an Extremely Fine gem**; with 1980 P.F. certificate.  
 Scott No. **447** . . . . . \$525

A ONE-IN-A-MILLION PAIR WHICH SHOULD GRADE VERY HIGH.



- 4231 \*\* **1914, 2¢ Carmine Rose, Type I, Horizontal Rotary Press Coil**, joint line pair, o.g., never hinged, lovely, fresh carmine rose shade, **Extremely Fine**; with 1985 P.F. certificate.  
 Scott No. **453** . . . . . \$1,450



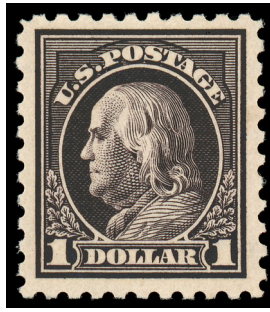
- 4232 \*\* **1915, 2¢ Red, Type II, Horizontal Rotary Press Coil**, pair, o.g., never hinged, **Extremely Fine and attractive**; with 1981 P.F. certificate.  
 Scott No. **454** . . . . . \$360



- 4233 \*\* **1916, 3¢ Violet, Horizontal Rotary Press Coil**, pair, o.g., never hinged, beautifully centered with Post Office fresh color, **an Extremely Fine gem, a gorgeous pair worth multiples of catalog.**  
 Scott No. **456** . . . . . \$1,200



- 4234 \*\* **1914, 2¢ Carmine, Imperf Horizontal Coil**, pair, o.g., never hinged, **fresh & Extremely Fine**; with photocopy of 1976 P.F. certificate for strip.  
 Scott No. **459** . . . . . \$875



- 4235 \*\*     **1915, \$1 Violet Black, D.L. Watermark, Perf 10, o.g., never hinged, deep color, tiny natural paper inclusion, Very Fine and attractive.**  
 Scott No. 460 . . . . . \$1,450

**1916-1919 Washington-Franklin Issue, Unwatermarked, Perf. 10**



- 4236 \*\*/\* ☐ **1916, 5¢ Carmine Color Error, the double error in a block of 12, o.g., top left stamp very lightly hinged, other including the error stamps never hinged, Post Office fresh, Extremely Fine and choice.**  
 Scott No. 467 . . . . . \$1,750

A LOVELY BLOCK WITH THE ERROR STAMPS BEING PARTICULARLY WELL CENTERED.

**The Rare Unwatermarked 1916 30¢ Orange Red**

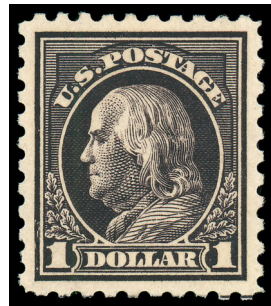


4237 \*\*     **1916, 30¢ Orange Red**, Pos. 64 from Plate 6917, o.g., never hinged, bright color, **Fine and rare**; with 1984 P.F. certificate.  
Scott No. **476A** . . . . . \$4,250

A LOVELY EXAMPLE OF THE 30¢ UNWATERMARKED VARIETY FROM ONE OF THE ORIGINAL SHEETS FOUND BY THE LONG TIME STAMP DEALER, LAWSON NAGEL.

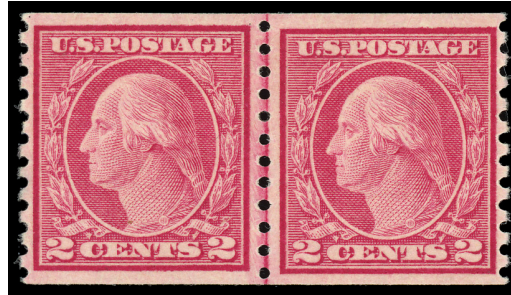


4238 \*     **1917, 50¢ Light Violet**, o.g., very lightly hinged, bright color & beautifully centered, **Extremely Fine and choice**; with 1992 P.F. certificate.  
Scott No. **477** . . . . . \$850



4239 \*     **1916, \$1 Violet Black**, o.g., previously hinged, deep rich color, outstanding centering amid large even margins, **an Extremely Fine gem**; with 1969 A.P.S. certificate.  
Scott No. **478** . . . . . \$600

A Gem Example of the 1916 2¢ Carmine, Type II, Horizontal Rotary Press Coil



- 4240 \* 1916, 2¢ Carmine, Type II, Horizontal Rotary Press Coil, joint line pair, o.g., lightly hinged, very well centered, **fresh & Extremely Fine**; with 1995 P.F. certificate.  
 Scott No. 491. . . . . \$13,000

1917-1919 Washington-Franklin Issue, Perf. 11




- 4241 B\* 1917, 1¢ Green, Perf 11, A.E.F. Booklet Pane of 30, o.g., light hinging, remarkably well centered for this notoriously off-centered booklet pane, rich color, small shallow thin spot on one stamp, **Extremely Fine appearance**.  
 Scott No. 498f. . . . . \$1,050



- 4242 \*\* **1917, 2¢ Deep Rose, Type Ia, Perf 11, o.g., never hinged, fresh & distinctive shade, Extremely Fine and choice; with 1984 P.F. certificate.**  
 Scott No. **500** . . . . . \$570



- 4243 \*\*/\*  **1917, 5¢ Rose Color Error, the double error in a block of 12, o.g., lightly hinged with center block of six never hinged, F.-V.F.**  
 Scott No. **505** . . . . . \$1,250



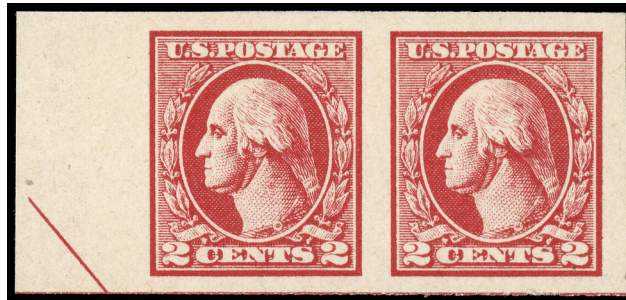
- 4244 \* **1917, 2¢ Carmine, D.L. Watermark, o.g., very lightly hinged, well centered, fresh & Very Fine, a lovely example; with 1984 P.F. certificate.**  
 Scott No. **519** . . . . . \$425



- 4245 \*\*    **1918, \$2 Red Orange & Black**, fresh & photo, o.g., never hinged, perfectly centered, **Extremely Fine, a wonderful gem**; with 1979 P.F. certificate.  
 Scott No. **523** . . . . . \$1,175

### 1918-1920 Offset Issues

#### A Superb Pair of the Imperforate 1918 2¢ Carmine, Type VII, Offset Printing



- 4246 \*    **1918, 2¢ Carmine, Type VII, Offset Printing, Imperf**, left margin pair showing part arrow, o.g., lightly hinged, huge margins, bright color, **Superb**; with 1995 P.F. certificate.  
 Scott No. **534B** . . . . . \$5,250

A GEM PAIR OF THE RARE 2¢ TYPE VII IMPERFORATE, WITH PART ARROW AND GUIDE LINE.

## 1919-1921 Issues



- 4247 \*\* **1919, 2¢ Carmine Rose, Type II, Rotary Press Coil Waste, Perf 11 x 10, o.g., never hinged, bright color, Fine and rare;** with 1992 P.F. certificate.  
 Scott No. **539** . . . . . \$4,250

*At the start or end of a coil-stamp print run from the 170-subject rotary plates, some leading or trailing paper was left over that was too short for 500 stamp coil rolls. The Bureau devised a plan to salvage this waste by converting the stamps from coil stamps into sheet stamps. This was accomplished by cutting the sheets into panes and putting the panes through the flat-plate perforator, giving the stamps perforations on all sides.*

## 1923-1928 Regular Issues

### A Rare Sound Used Example of the 1923 1¢ Franklin, Rotary Press Coil Waste



- 4248 o **1923, 1¢ Franklin, Rotary Press Coil Waste, wavy line machine cancel, well centered for this with perforations clear of design on all four sides, bright color, Fine and attractive;** with 1969 & 1987 P.F. certificates.  
 Scott No. **594**. . . . . \$10,500

ONE OF THE FEW SOUND EXAMPLES OF THE 1¢ ROTARY PERF 11, WHICH IS RECOGNIZED AS ONE OF THE RAREST 20TH CENTURY UNITED STATES STAMPS.

*At the start or end of a coil-stamp print run from the 170-subject rotary plates, some leading or trailing paper was left over that was too short for the 500 stamp coil rolls. The Bureau devised a plan to salvage this waste by converting the stamps from coil stamps into sheet stamps. This was accomplished by cutting the sheets into panes and putting the panes through the flat-plate perforator, giving the stamps perforations on all sides.*



- 4249 \*\* **1923, 2¢ Washington, Rotary Press Coil Waste**, o.g., never hinged, well centered with large margins, **Very Fine and choice**; with 1982 P.F. certificate.  
 Scott No. **595** . . . . . \$450



- 4250 \*\* **1928, 2¢ Washington, Type II, Rotary Press Printing**, o.g., never hinged, right color & well centered, **Extremely Fine**; with 1985 P.F. certificate.  
 Scott No. **634A** . . . . . \$600

### 1935 National Parks



- 4251 \*\* ☐ **1935, National Parks Complete, Imperf, with Original Gum**, complete sets of all guide arrow position blocks of 4 and centerline blocks of 4 (50 blocks), o.g., never hinged (usual gum skips as always), all select with full even margins, **a Very Fine set**.  
 Scott No. **756-765** . . . . . \$4,610

1954-2007 Regular Issue Varieties



- 4252 \*\*    **1954, 2¢ Jefferson, Experimental Silkote Paper**, o.g., never hinged, bright fresh color, **Superb**, an outstanding example of this variety; with 2005 P.S.E. certificate **Graded SUP 98 (SMQ \$2,500)**.  
Scott No. **1033a** . . . . . \$275

ONE OF ONLY FIVE EXAMPLES TO ACHIEVE THE GRADE OF SUPERB 98, WITH NONE HIGHER.

One of the Rarest 20th Century Modern Errors



- 4253 \*\*    **1954, 1¢ Washington, Horizontal Coil, Imperf Pair**, o.g., never hinged, bright, fresh color, **Very Fine and rare**.  
Scott No. **1054c** . . . . . Estimate \$3,000 - 4,000

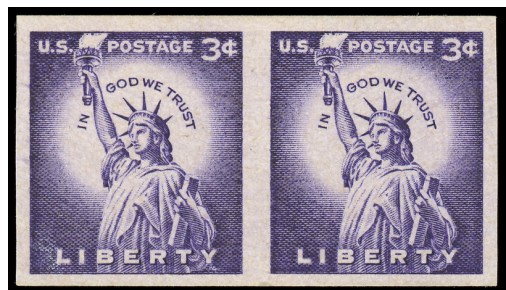
*A similar pair in our December 2022 Gems Sale (#107, Lot 2331) realized \$4,500 hammer.*



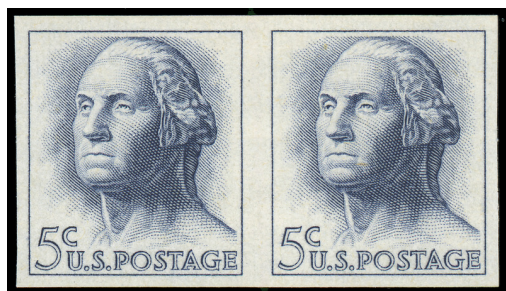
- 4254 \*\* 1954, 2¢ Jefferson, Horizontal Coil, Untagged, Imperf Pair, o.g., never hinged, bold Riverdale, Md. precancels, Very Fine and choice.  
Scott No. 1055c. . . . . \$325



- 4255 \* 1968, 2¢ Jefferson, Horizontal Coil, Tagged, Imperf Pair, wide margins, Post Office fresh, Very Fine and rare.  
Scott No. 1055d. . . . . \$425



- 4256 \* 1954, 3¢ Statue of Liberty, Horizontal Coil, Imperf Pair, o.g., lightly hinged, evenly balanced margins, bright and fresh, Very Fine and rare.  
Scott No. 1057b. . . . . \$1,250



- 4257 \*\* 1962, 5¢ Washington, Horizontal Coil, Imperf Pair, o.g., never hinged, large even margins, Post Office fresh, Very Fine and choice, a rare imperforate pair.  
Scott No. 1229b. . . . . \$300



- 4258 \*\* 1967, 6¢ Franklin D. Roosevelt, Vertical Coil, Imperf Pair, o.g., never hinged, Very Fine and rare.  
Scott No. 1298a. . . . . \$1,500



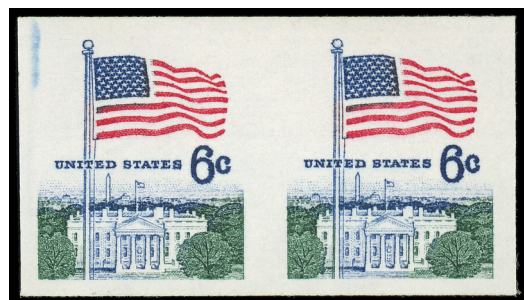
- 4259 \*\* 1966, 4¢ Lincoln, Horizontal Coil, Imperf Pair, o.g., never hinged, fresh & Very Fine.  
Scott No. 1303b. . . . . \$400



- 4260 \*\* 1966, 5¢ Washington, Horizontal Coil, Imperf Joint Line Pair, Untagged (Bureau Precanceled), o.g., never hinged with Mount Pleasant, IA precancel, Very Fine and rare.  
Scott No. 1304e. . . . . \$800



- 4261 \*\* 1973, \$1 Eugene O'Neill, Horizontal Coil, Imperf Pair, o.g., never hinged, large even margins, **Very Fine and choice**.  
Scott No. 1305Cd. . . . . \$1,250



- 4262 \*\* 1969, 6¢ Flag Over White House, Horizontal Coil, Imperf Pair, o.g., never hinged, **fresh & Very Fine**.  
Scott No. 1338Ab. . . . . \$350

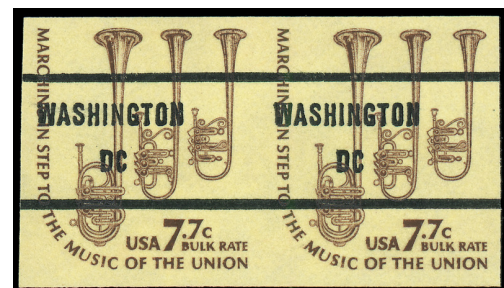


- 4263 \*\* 1970, 6¢ Eisenhower, Horizontal Coil, Imperf Pair, issued many with part gum or no gum, o.g., never hinged, right stamp with trivial wrinkle (not mentioned on cert.), **Very Fine and rare, only a few pairs exist with full gum & in relatively sound condition**; with 1991 P.F. certificate.  
Scott No. 1401b. . . . . \$2,500

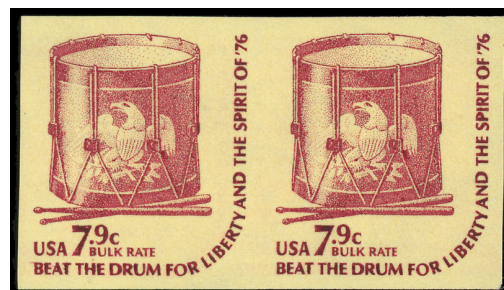
*Scott footnote states, "No. 1401b often found with small faults and/or without gum."*



- 4264 \*\* 1979, 3.1¢ Guitar, Horizontal Coil, Imperf Pair, o.g., never hinged, **fresh & Very Fine**.  
Scott No. 1613b. . . . . \$850



- 4265 \*\* 1976, 7.7¢ Saxhorns, Horizontal Coil, Imperf Pair, Untagged (Bureau Precanceled), o.g., never hinged with Washington, D.C. precancel, **fresh & Very Fine, a rare imperf. pair**.  
Scott No. 1614b. . . . . \$1,250



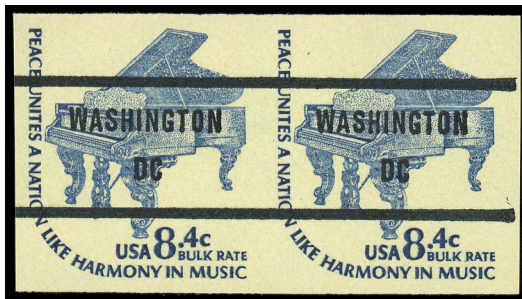
- 4266 \*\* 1976, 7.9¢ Drum, Horizontal Coil, Imperf Pair, o.g., never hinged, **fresh & Very Fine**.  
Scott No. 1615b. . . . . \$300



- 4267 \*\* 1978, 8.4¢ Piano, Horizontal Coil, Untagged (Bureau Precanceled), Imperf Pair, o.g., never hinged, **Very Fine and rare**.  
Scott No. 1615Cf. . . . . \$1,500



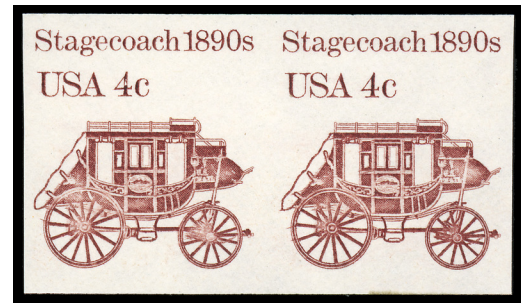
- 4268 \*\* 1978, 8.4¢ Piano, Horizontal Coil, Untagged (Bureau Precanceled), Imperf Pair, o.g., never hinged with Brownstown, Ind. precancel, fresh & Very Fine.  
Scott No. 1615Cf . . . . . \$900



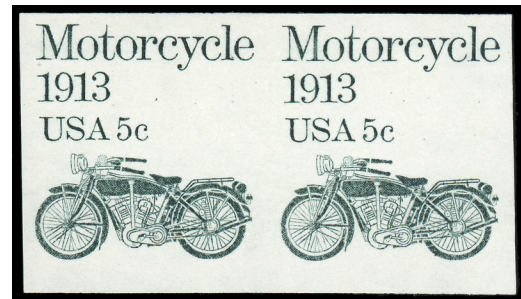
- 4269 \*\* 1978, 8.4¢ Piano, Horizontal Coil, Untagged (Bureau Precanceled), Imperf Pair, o.g., never hinged with Washington, D.C. precancel, Very Fine and rare.  
Scott No. 1615Cf . . . . . \$500



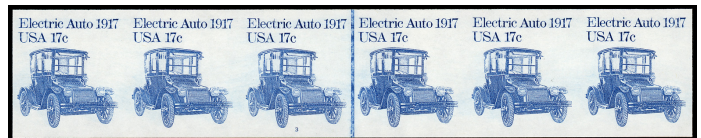
- 4270 \*\* 1975, 13¢ Flag Over Independence Hall, Vertical Pair, Imperf, o.g., never hinged, fresh & Very Fine.  
Scott No. 1622b. . . . . \$225



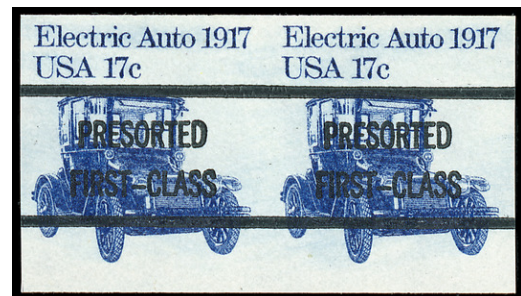
- 4271 \*\* 1982, 4¢ Stagecoach, Horizontal Coil, Imperf Pairs, With and Without Precancel, o.g., never hinged, fresh & Very Fine.  
Scott No. 1898Ac, 1898Ad . . . . . \$700



- 4272 \*\* 1983, 5¢ Motorcycle, Horizontal Coil, Imperf Pair, o.g., never hinged, Very Fine and rare.  
Scott No. 1899a. . . . . \$1,500



- 4273 \*\* 1981, 17¢ Electric Auto, Horizontal Coil, Imperf Line Strip of 6 with Plate #3, o.g., never hinged, fresh & Very Fine.  
Scott No. 1906b . . . . . Estimate \$300 - 400



Ex 4274

- 4274 \*\* 1981, 17¢ Electric Auto, Horizontal Coil, Imperf Pairs, With & Without Precancel, o.g., never hinged, fresh & Very Fine.  
Scott No. 1906b, 1906c. . . . . \$530



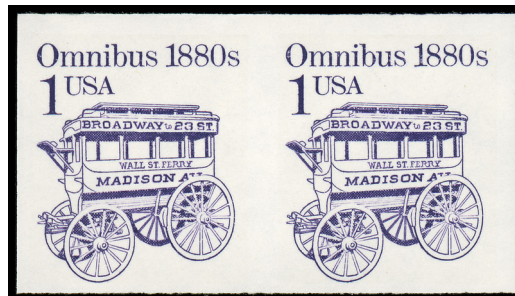
- 4275 \*\* 1981 (20¢) “C” Stamp, Horizontal Coil, Imperf Pair, o.g., never hinged, Very Fine.  
 Scott No. 1947a . . . . . \$700



- 4276 \*\* 1985, 18¢ George Washington, Horizontal Coil, Imperf Pair, o.g., never hinged, Very Fine.  
 Scott No. 2149b . . . . . \$750



- 4277 \*\* 1985, 18¢ George Washington, Horizontal Coil, Untagged (Bureau Precanceled), Imperf Pair, o.g., never hinged, Very Fine.  
 Scott No. 2149c . . . . . \$575



- 4278 \*\* 1986, 1¢ Omnibus, Horizontal Coil, Imperf Pair, o.g., never hinged, Very Fine and choice, many of these imperf coils are cut close at bottom or are into design.  
 Scott No. 2225c . . . . . \$1,500



- 4279 \*\* **1988, 3¢ Conestoga Wagon, Horizontal Coil, Transitional Strip with Imperf Pair, o.g., never hinged, bright and fresh, Very Fine.**  
 Scott No. 2252b . . . . . \$1,350

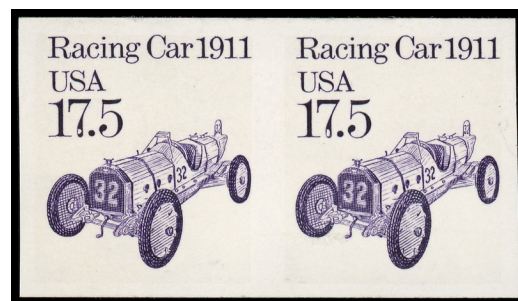
A CHOICE TRANSITIONAL STRIP OF THIS EXTREMELY RARE IMPERFORATE TRANSPORTATION COIL ISSUE.



- 4280 \*\* **1987, 10¢ Canal Boat, Imperf Pair, o.g., never hinged, well centered for this notoriously off centered imperforate, bright and fresh, Very Fine.**  
 Scott No. 2257e . . . . . \$1,000



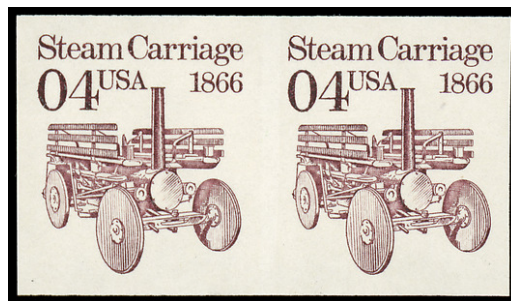
- 4281 \*\* **1988, 15¢ Tugboat, Horizontal Coil, Imperf Pair, o.g., never hinged, fresh & Very Fine.**  
 Scott No. 2260c . . . . . \$500



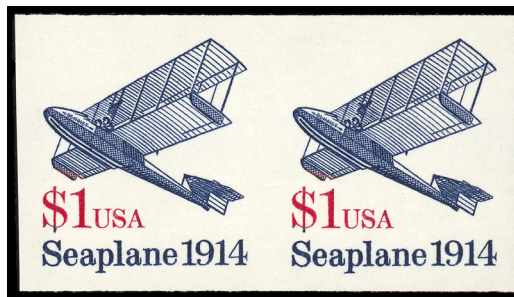
- 4282 \*\* **1987, 17.5¢ Racing Car, Horizontal Coil, Imperf Pair, o.g., never hinged, fresh & Very Fine, a pristine example of this rare error.**  
 Scott No. 2262b . . . . . \$1,250



- 4283 \*\* **1988, 25¢ Honeybee, Horizontal Coil, Pair, Imperf Between**, o.g., never hinged, trace of perf at left, **Very Fine and rare**; with photocopy of 1991 P.F. certificate for strip of 4.  
 Scott No. **2281d** . . . . . \$600



- 4284 \*\* **1991, 4¢ Steam Carriage, Horizontal Coil, Imperf Pair**, o.g., never hinged, **Very Fine**.  
 Scott No. **2451a** . . . . . \$450



- 4285 \*\* **1990, \$1 Seaplane, Horizontal Coil, Imperf Pair**, o.g., never hinged, fresh & pristine, **Very Fine and rare**.  
 Scott No. **2468a** . . . . . \$1,750



- 4286 \*\* **1991 (10¢) Eagle & Shield, "Bulk Rate USA", Imperforate**, transitional strip of eleven with nine normal stamps at left and no vertical perforations between right pair, o.g., never hinged, **Very Fine and rare, one of only a few recorded**.  
 Scott No. **2602a** . . . . . \$3,500

# The Unique Transitional Strip



- 4287 \*\* 1991 (23¢) Flag & “Presorted First-Class”, Transitional Strip, strip of seven with mis-registered perfs showing left stamp completely imperforate, o.g., never hinged, light horiz. crease, **Very Fine and rare**; with 2005 P.S.E. certificate for strip of 11. Scott No. **2605a** . . . . . Estimate \$1,000 - 1,500

*This strip provided two fully imperforate pairs and this transitional strip. As a point of reference regarding rarity, the William Langs Inventory did not include any of these items.*



- 4288 \*\* 1997, 32¢ Yellow Rose Coil, Self-Adhesive, transitional strip with die cutting omitted and red color only on left pair and all colors omitted at right, o.g., never hinged, **Very Fine**; with 1999 A.P.S. certificate. Scott No. **3054c, 3054f** . . . . . Estimate \$1,500 - 2,000

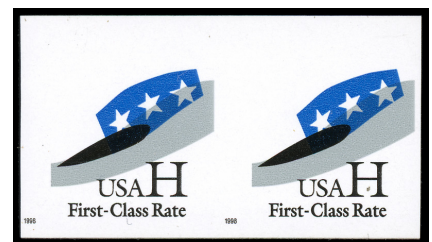
A UNIQUE ITEM, WHICH THE OWNER PURCHASED IN 2010 FOR \$5,500. BOTH VARIETIES ARE LISTED BY UNPRICED BY SCOTT.



4289



4290



4291

- 4289 \*\* 1997, 32¢ Yellow Rose Coil, Self-Adhesive Pair, Black Omitted and Die Cutting Omitted, o.g., never hinged, **fresh & Very Fine**. Scott No. **3054e** . . . . . \$550
- 4290 \*\* 1998, 22¢ Uncle Sam Coil, Self-Adhesive, Pair, Die Cutting Omitted, o.g., never hinged, **Very Fine and scarce**. Scott No. **3263a** . . . . . \$600
- 4291 \*\* 1998 (33¢) Uncle Sam’s Hat and “H” “First-Class Rate”, Self-Adhesive Coil, Square Corners, Pair, Red Omitted and Die Cutting Omitted, o.g., never hinged, **fresh & Very Fine**. Scott No. **3265e** . . . . . \$500



- 4292 (\*) **2002, 5¢ Toleware Coffeepot Coil, Imperf Pair**, no gum (as often), **Very Fine**, a rare imperf pair. Scott No. **3612a**. . . . . \$1,200 for disturbed gum



- 4293 \*\* **2002, 23¢ George Washington, Self-Adhesive Coil, Pair, Die Cutting Omitted**, o.g., never hinged, **Very Fine and scarce**. Scott No. **3617a**. . . . . \$500



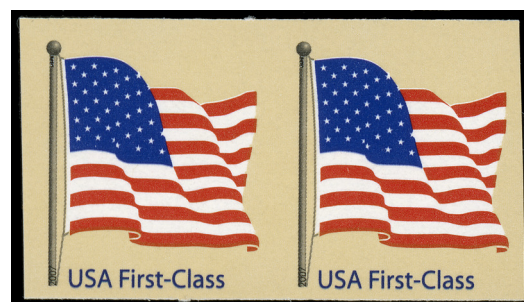
- 4294 \*\* **2002 (37¢) Flag, Self-Adhesive Coil, Pair, Die Cutting Omitted**, o.g., never hinged, **Very Fine**. Scott No. **3622a**. . . . . \$475



- 4295 \*\* **2003, 37¢ Flag, Self-Adhesive Coil, Vertical Pair, Horizontal Die-Cut Slits Omitted**, o.g., never hinged, **Very Fine and scarce**. Scott No. **3632Ag**. . . . . \$750



- 4296 \*\* **2006, 39¢ Flag & Statue of Liberty, Unslit Between, Block of 10**, with top strip showing Plate Number "S1111", o.g., never hinged, **Very Fine and rare**, accompanied by 2007 Linns article regarding this find; with photocopy of 2007 P.S.E. certificate for similar block. Scott No. **3982a**. . . . . \$2,500 as pairs



- 4297 \*\* **2007 (41¢) Flag, Die Cutting Omitted, Pair**, o.g., never hinged, **Very Fine and rare**. Scott No. **4133a**. . . . . \$1,250

## Airmail Issues



- 4298 \*\* **1968, 10¢ Fifty-Star Runway, Imperf Pair**, o.g., never hinged, **fresh & Very Fine**. Scott No. **C73a**. . . . . \$450

End of Sale - Thank You

